

# The weekly Coronavirus (COVID-19) surveillance report for Wirral

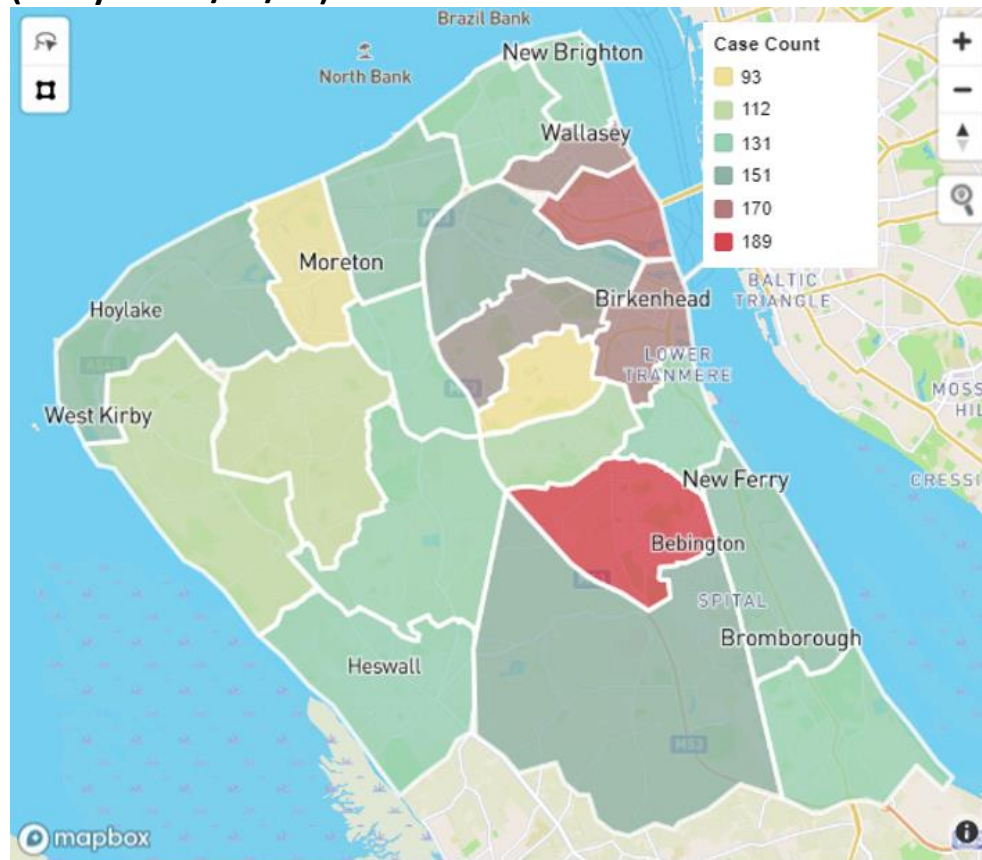
Week ending: Friday 28<sup>th</sup> January 2022

cumulative data from:

**30 January 2020 to 28 January 2022 in WIRRAL** (unless otherwise stated)

cumulative number of COVID-19 cases (Pillar 1 +2)	proportion of eligible people receiving 1 vaccine dose to 01 <sup>st</sup> February	Daily individuals tested per 100,000 population 7-day moving average <sup>1</sup> (to 26 <sup>th</sup> January)	cumulative number of registered COVID-19 deaths to 21 <sup>st</sup> January
<b>90,697</b>	<b>84.4%</b>	<b>516.0</b>	<b>1,115</b>
number of COVID-19 cases this week (Pillar 1 +2)	proportion of eligible people receiving 2 vaccine doses to 01 <sup>st</sup> February	latest 7-day PCR positivity of COVID-19 tests (to 26 <sup>th</sup> January)	number of COVID-19 deaths registered this week (to 21 <sup>st</sup> January)
<b>3,052</b>	<b>79.0%</b>	<b>15.6%</b>	<b>8</b>

## Confirmed Cases by Wirral Ward (7-days to 28/01/22)



## 7-DAY CONFIRMED COVID-19 INFECTION RATES<sup>2</sup>

Wirral	<b>941.0</b>
Merseyside	<b>788.6</b>
North West	<b>841.2</b>
England	<b>1070.9</b>
National Rank	243rd <sup>3</sup>
Previous Week Rank	214th <sup>3</sup>

<sup>1</sup> Please note that the tests per 100K population this week (Pillar 2 only) figures and cumulative tests per 100K population (Pillar 2 only) previously above have been replaced as the NHS Digital dashboard has been de-commissioned from the 30th September. The figures previously reported are different, sourced from Public Health England, so are not comparable with new reports

<sup>2</sup> Infection (incidence) rate - the cumulative number of confirmed cases of COVID-19 for the 7-day period divided by the total population of each area multiplied by 100,000

<sup>3</sup> There are 309 local authorities (LTAs) in England (as at 14/04/21). A decrease in rank does not necessarily mean our rate is decreasing, rather, other areas rates could be increasing at a greater speed

<sup>4</sup> From 31/01/2022, COVID-19 cases in England now include reinfections (previously, figures only reported COVID-19 cases as the date of first infection, so individuals were only ever counted once). Infections will now be counted separately if there are at least 90 days between positive tests. Due to this change, cases are likely to show an increase of around 10%. More information can be found on the [Coronavirus dashboard](#).

**Note(s):**

Rates are now being calculated using population estimates for 2020 (ONS) and, though the impact is negligible, figures are not retrospectively comparable prior to report for week ending 13<sup>th</sup> August 2021.

Headline number of positive cases figures sourced from [Daily summary | Coronavirus in the UK \(data.gov.uk\)](#) cumulative total is subject to retrospective addition which can mean it increases by more than the weekly total.

For more information, including ward figures, see [COVID-19 statistics for Wirral | www.wirral.gov.uk](#) or please copy this web address <https://www.wirral.gov.uk/health-and-social-care/covid-19-statistics-wirral> into your browser.

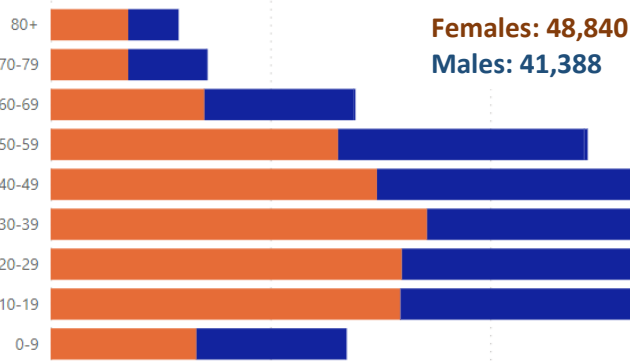
[Daily summary | Coronavirus in the UK \(data.gov.uk\)](#) or please copy this web address <https://coronavirus.data.gov.uk/> into your browser

# The weekly Coronavirus (COVID-19) surveillance report for Wirral

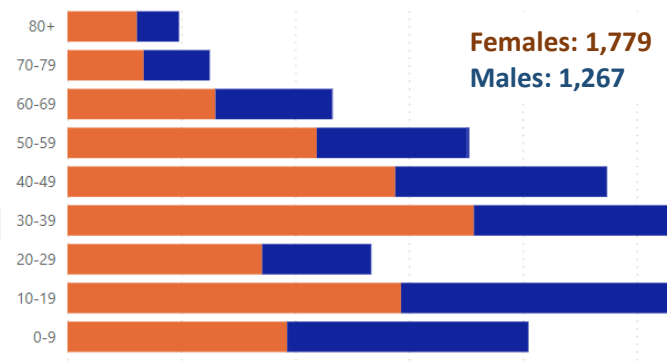
Week ending: Friday 28<sup>th</sup> January 2022

## CONFIRMED COVID-19 CASES BY AGE AND GENDER

Cumulative



7-days



**35 years** all time median age<sup>4</sup>

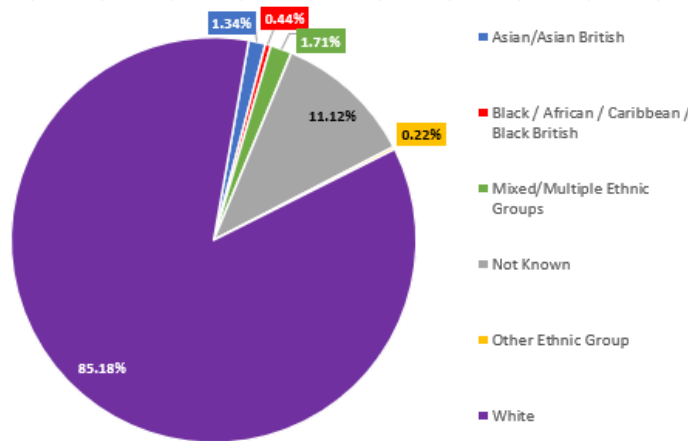
**35 years** 7-day median age<sup>4</sup>

<sup>4</sup>median age is the middle value in a range - half of the cases are younger than this age and half are older (all persons)

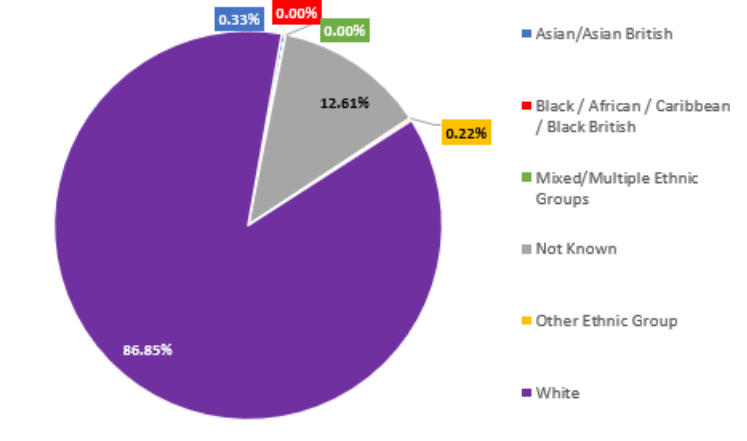
**Note(s):**

Some case records do not currently have full age and/or gender details and are therefore not included in the above chart; therefore, figures will not sum to headline totals

## ETHNICITY OF CONFIRMED COVID-19 CASES



## ETHNICITY OF COVID-19 DEATHS

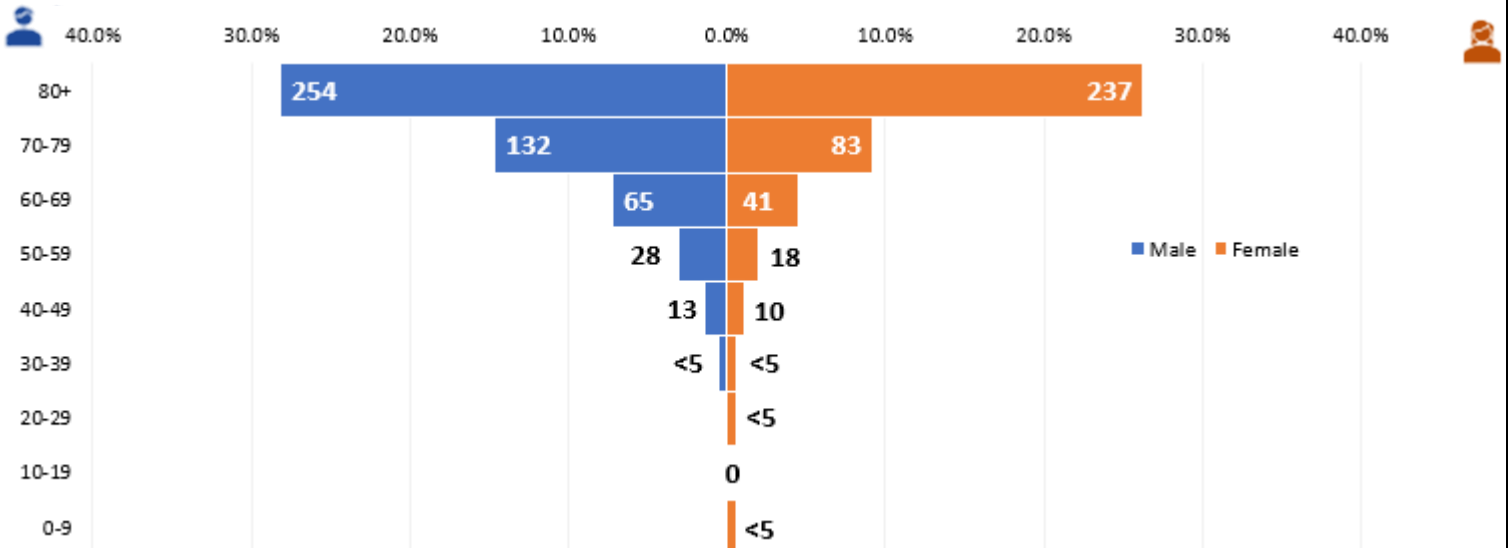


**Note(s):**

These data sets are analysed using the cumulative confirmed cases and COVID-19 related deaths in Wirral

## COVID-19 RELATED MORTALITY

cumulative number of COVID-19 related deaths in Wirral



**Note(s):**

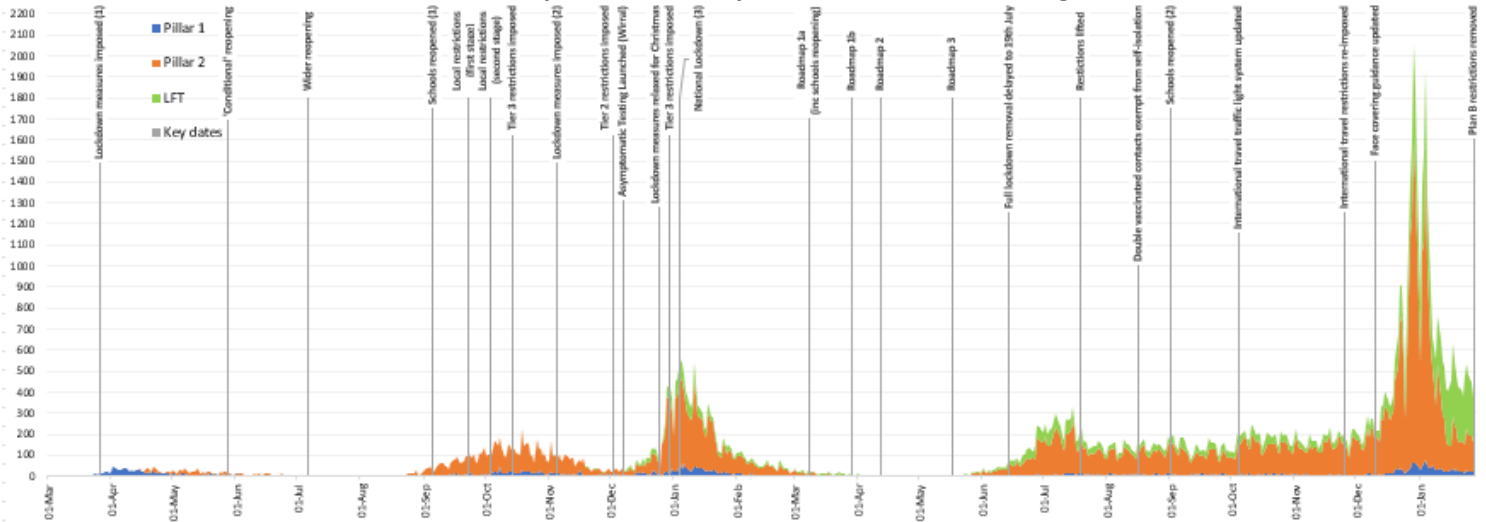
The above data has followed the methodology of the PHE indicator for 'Deaths within 28 days of a positive COVID-19 test' since reporting for week ending 30<sup>th</sup> October and is therefore not comparable to reports prior to that week. The figures are still derived using a local live data source and so will therefore not exactly match the number of deaths officially reported by the Office for National Statistics or the PHE Coronavirus Tracker. Further validation of the external data sources with fully coded dates has now led to changes in the numbers reported. Some records do not currently have full age and/or gender details and are therefore not included in the above chart; therefore, figures will not sum to headline totals. Cases are subject to retrospective review and may be reallocated to other Local Authorities.

# The weekly Coronavirus (COVID-19) surveillance report for Wirral

Week ending: Friday 28<sup>th</sup> January 2022

## EPIDEMIC CURVE

number of positive cases by Pillar 1 and Pillar 2 testing<sup>5</sup>



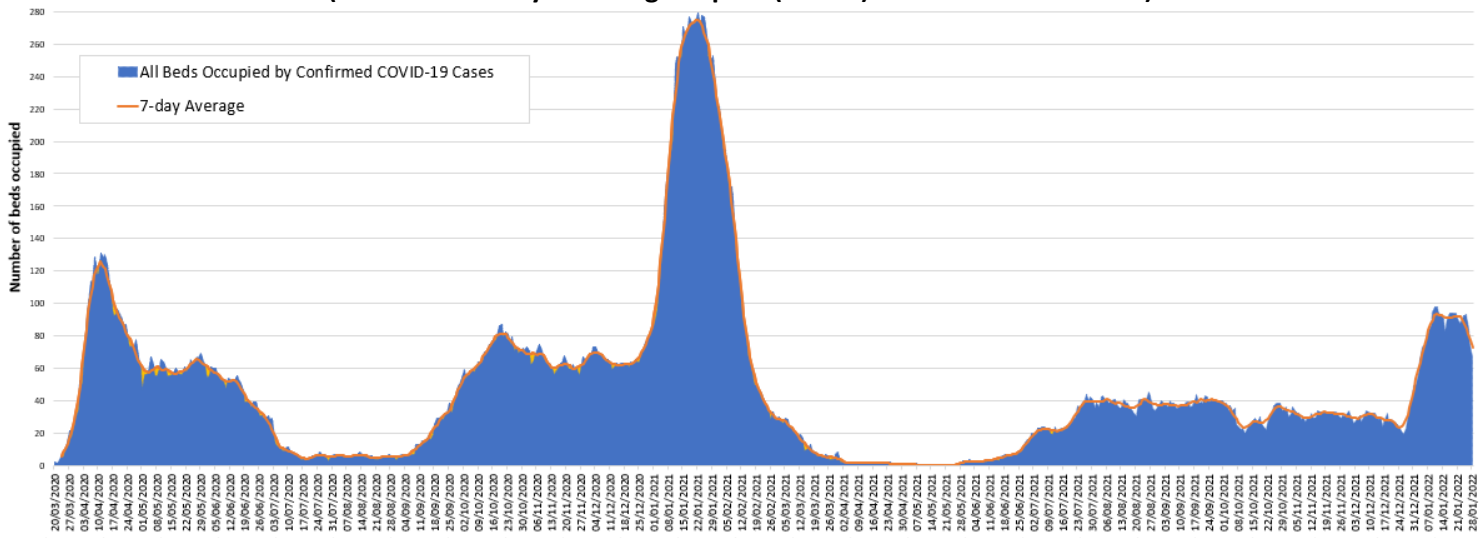
<sup>5</sup>The most recent week is a partial week and only data from more than five days ago can be considered complete

**Note(s):**

The data are shown by the date the specimen was taken  
 Pillar 1 data is for swab testing in PHE labs and NHS hospitals for those with a clinical need as well as staff  
 Pillar 2 data is for swab testing for the wider population, as set out in government guidance  
 LFT (lateral flow device) data is for rapid tests in the community (which also make up part of Pillar 2 testing)  
 Details around the government roadmap can be found here: <https://www.gov.uk/government/publications/covid-19-response-spring-2021/covid-19-response-spring-2021-summary>

## HOSPITALISED COVID-19 CASES

Number of beds occupied by confirmed COVID-19 patients by bed type (Wirral University Teaching Hospital (WUTH) NHS Foundation Trust)



**Note(s):**

The peak of WUTH beds occupied by patients with COVID-19 is 279 (January 2021). This surpassed the previous peak of 131 (April 2020)

For more information on this report, please see the following links:

- [About the data we use for our Weekly Surveillance Report](#)
- [Data we use to produce the Weekly Surveillance Report](#)
- [Frequently Asked Questions \(FAQs\)](#)
- [Additional sources for data and information](#)