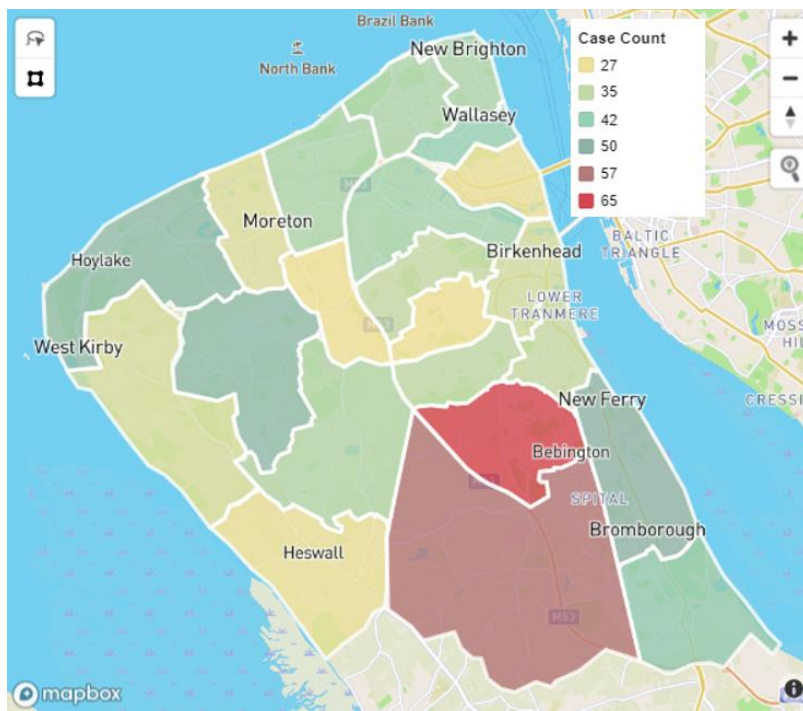


The weekly Coronavirus (COVID-19) surveillance report for Wirral

Week ending: Friday 25th February 2022

Cases (to 25 th February 2022)	Case Rate (to 25 th February 2022)	Cases National Rank	Deaths (to 18 th February 2022)	Vaccinations (to 01 st March 2022)
<ul style="list-style-type: none"> This week: 857 Cumulative: 96,758 	<ul style="list-style-type: none"> Wirral: 264.2 Merseyside: 252.3 North-West: 225.9 England: 317.2 	<ul style="list-style-type: none"> This week: 257th Last week: 215th 	<ul style="list-style-type: none"> This week: 2 Cumulative: 1,140 	<ul style="list-style-type: none"> 1 dose: 84.8% 2 doses: 79.9% 3 doses: 83.6%

Confirmed Cases by Wirral Ward (map) (7-days to 25/02/22)



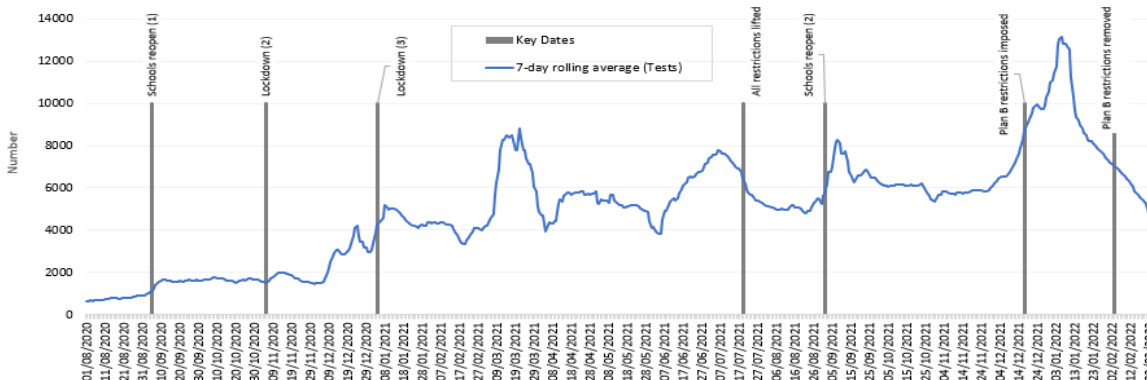
Confirmed Cases by Wirral Ward (table) (7-days to 25/02/22)

Wirral Ward	Cases
Bebington	65
Clatterbridge	58
Bromborough	49
Greasby, Frankby and Irby	47
Hoylake and Meols	47
Eastham	44
Liscard	42
Bidston and St. James	39
Wallasey	38
Leasowe and Moreton East	38
New Brighton	38
Pensby and Thingwall	37
Prenton	35
Rock Ferry	34
Claughton	34
Birkenhead and Tranmere	32
West Kirby and Thurstaston	31
Moreton West and Saughall Massie	30
Seacombe	28
Heswall	28
Upton	27
Oxton	27

Note(s):

- ¹ Positive cases sourced from Daily summary | Coronavirus in the UK (data.gov.uk) cumulative total is subject to retrospective addition which can mean it increases by more than the weekly total
- ² Case rate - the cumulative number of confirmed cases of COVID-19 for the 7-day period divided by the total population of each area multiplied by 100,000
- ³ From 31/01/2022, COVID-19 cases in England now include reinfections (previously, figures only reported COVID-19 cases as the date of first infection, so individuals were only ever counted once). Infections will now be counted if there are at least 90 days between positive tests. Due to this change, cases are likely to show an increase of around 10%. More information can be found on the [Coronavirus dashboard](https://coronavirus.data.gov.uk) or please copy this web address <https://coronavirus.data.gov.uk> into your browser

Testing in Wirral (7 days to 25/02/2022)

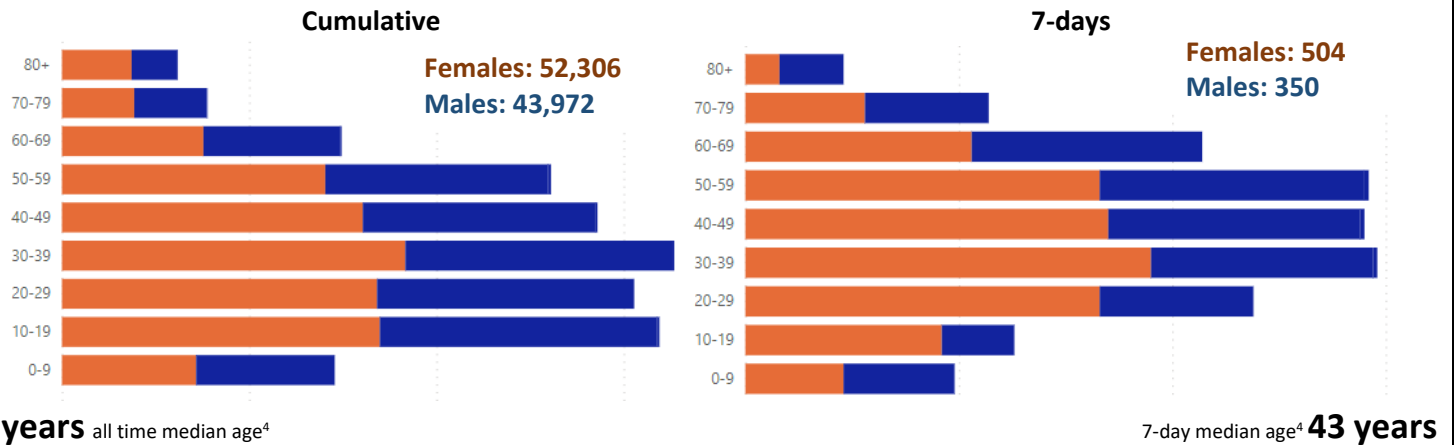


- There was a reduction in number of tests to 25th February (28,887 vs 36,687 last week)
- Testing rate was 255.3 in 7 days to 23rd February (compared to 339.6 last week)

The weekly Coronavirus (COVID-19) surveillance report for Wirral

Week ending: Friday 25th February 2022

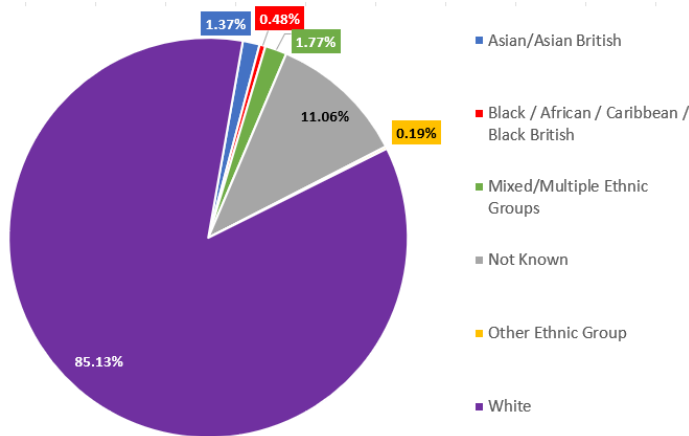
CONFIRMED COVID-19 CASES BY AGE AND GENDER



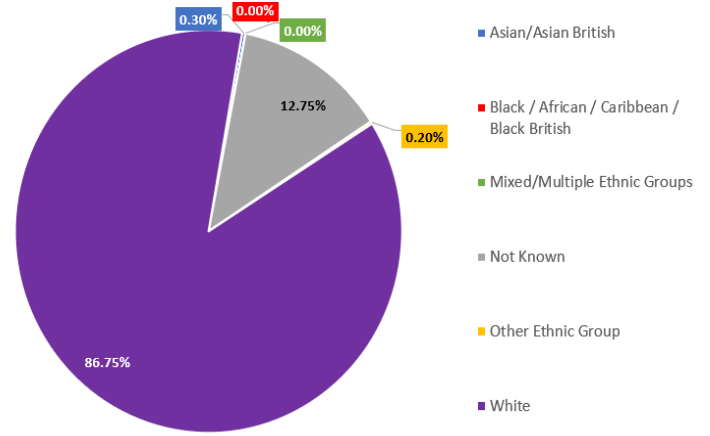
⁴median age is the middle value in a range - half of the cases are younger than this age and half are older (all persons)

Note(s):
Some case records do not currently have full age and/or gender details and are therefore not included in the above chart; therefore, figures will not sum to headline totals

ETHNICITY OF CONFIRMED COVID-19 CASES



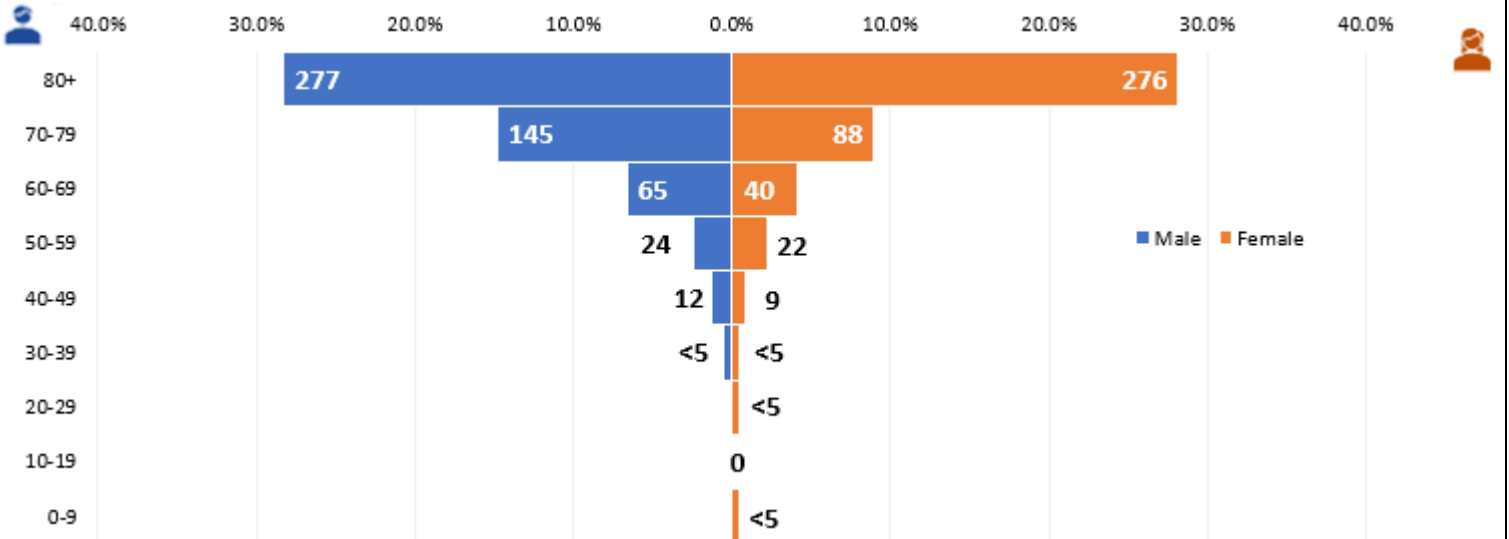
ETHNICITY OF COVID-19 DEATHS



Note(s):
Please note that it has not been possible to update the deaths data for the report week ending 18th February 2022
These data sets are analysed using the cumulative confirmed cases and COVID-19 related deaths in Wirral

COVID-19 RELATED MORTALITY

cumulative number of COVID-19 related deaths in Wirral



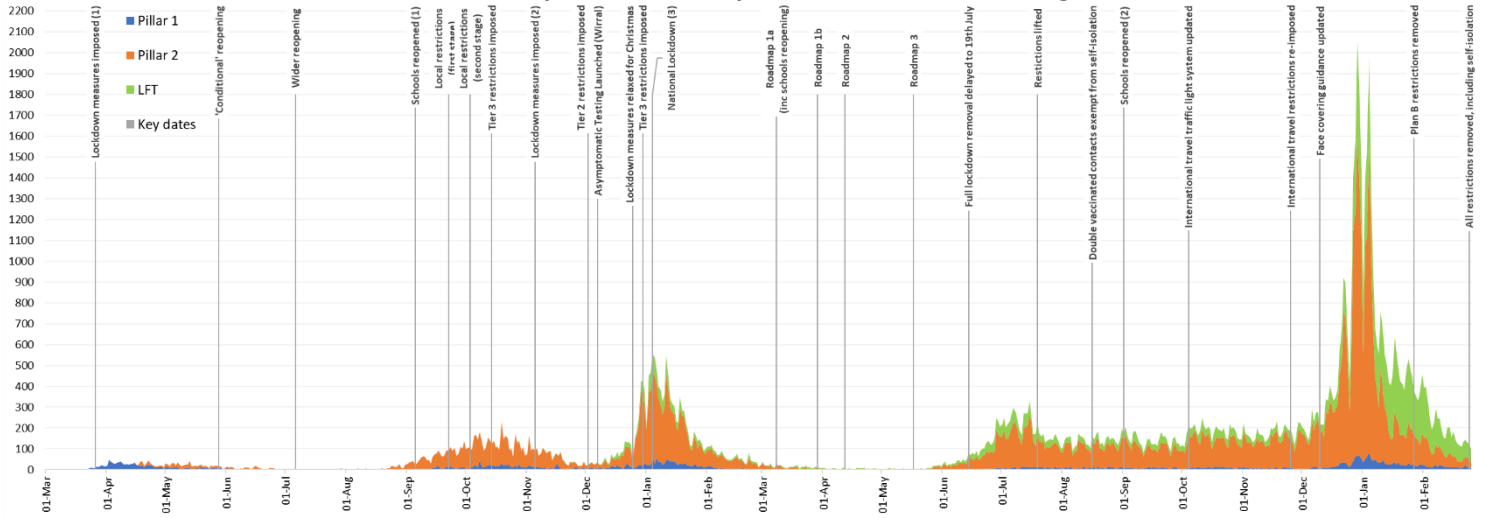
Note(s):
The above data has followed the methodology of the PHE indicator for 'Deaths within 28 days of a positive COVID-19 test' since reporting for week ending 30th October and is therefore not comparable to reports prior to that week. The figures are still derived using a local live data source and so will therefore not exactly match the number of deaths officially reported by the Office for National Statistics or the PHE Coronavirus Tracker. Further validation of the external data sources with fully coded dates has led to changes in the numbers reported. From 31/01/2022, COVID-19 cases in England now include reinfections (previously, figures only reported COVID-19 cases as the date of first infection, so individuals were only ever counted once) this has increased the number of deaths. Some records do not currently have full age and/or gender details and are therefore not included in the above chart; therefore, figures will not sum to headline totals. Cases are subject to retrospective review and may be reallocated to other Local Authorities.

The weekly Coronavirus (COVID-19) surveillance report for Wirral

Week ending: Friday 25th February 2022

EPIDEMIC CURVE

number of positive cases by Pillar 1 and Pillar 2 testing⁵



⁵The most recent week is a partial week and only data from more than five days ago can be considered complete

Note(s):

The data are shown by the date the specimen was taken

Pillar 1 data is for swab testing in PHE labs and NHS hospitals for those with a clinical need as well as staff

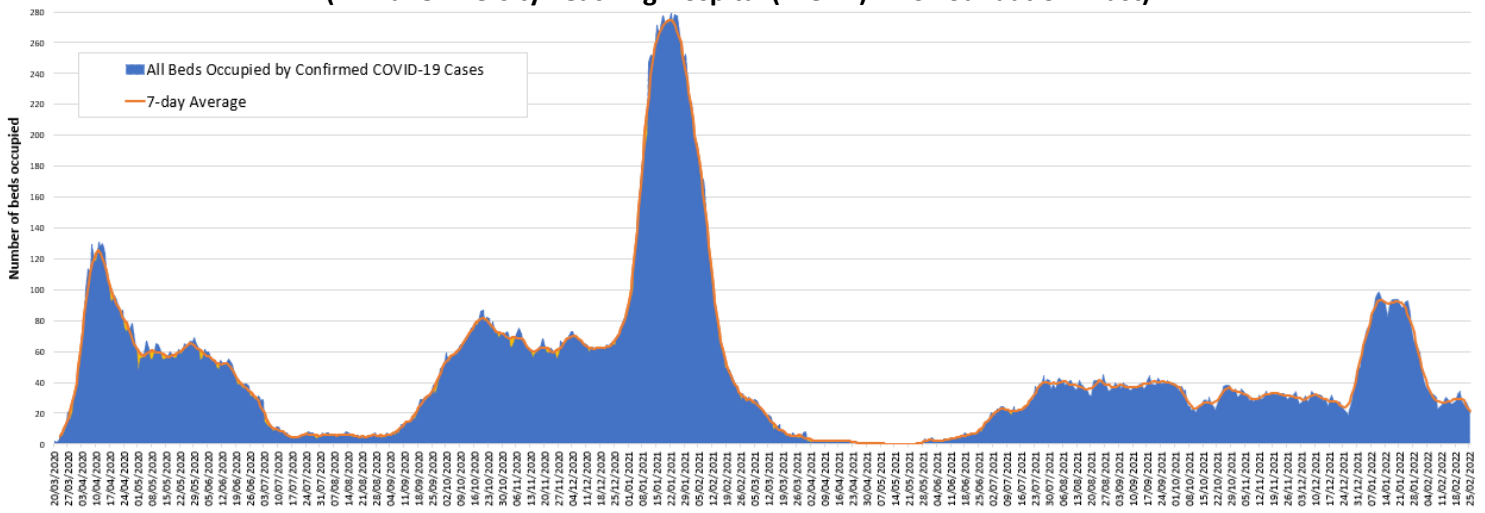
Pillar 2 data is for swab testing for the wider population, as set out in government guidance

LFT (lateral flow device) data is for rapid tests in the community (which also make up part of Pillar 2 testing)

Details around the government roadmap can be found here: <https://www.gov.uk/government/publications/covid-19-response-spring-2021/covid-19-response-spring-2021-summary>

HOSPITALISED COVID-19 CASES

Number of beds occupied by confirmed COVID-19 patients by bed type (Wirral University Teaching Hospital (WUTH) NHS Foundation Trust)



Note(s):

The peak of WUTH beds occupied by patients with COVID-19 is 279 (January 2021). This surpassed the previous peak of 131 (April 2020)

For more information on this report, please see the following links:

[About the data we use for our Weekly Surveillance Report](#)

[Data we use to produce the Weekly Surveillance Report](#)

[Frequently Asked Questions \(FAQs\)](#)

[Additional sources for data and information](#)