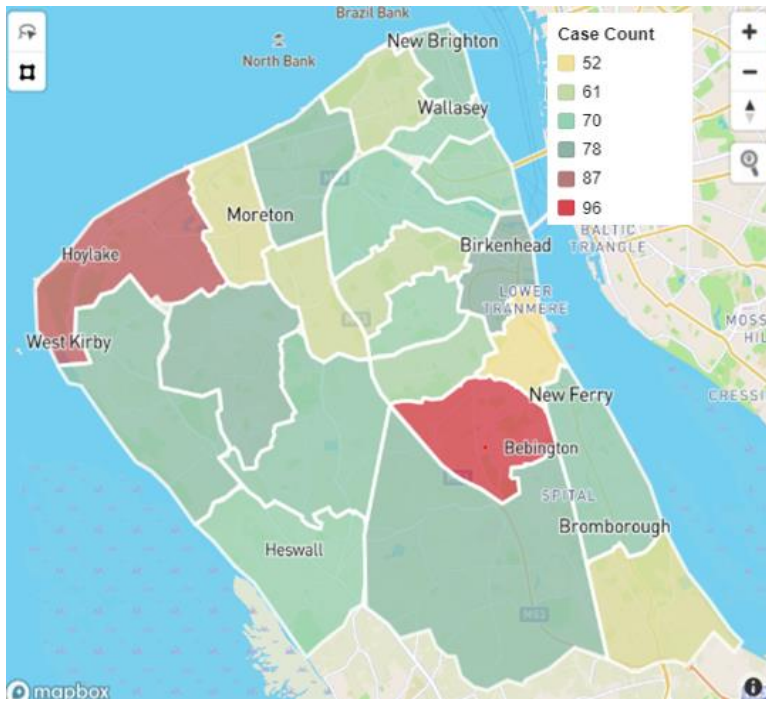


# The weekly Coronavirus (COVID-19) surveillance report for Wirral

Week ending: Friday 11<sup>th</sup> February 2022

Cases (to 11 <sup>th</sup> February 2022)	Case Rate (to 11 <sup>th</sup> February 2022)	Cases National Rank	Deaths (to 04 <sup>th</sup> February 2022)	Vaccinations (to 15 <sup>th</sup> February 2022)
<ul style="list-style-type: none"> <li>This week: <b>1,530</b></li> <li>Cumulative: <b>94,735</b></li> </ul>	<ul style="list-style-type: none"> <li>Wirral: <b>471.7</b></li> <li>Merseyside: <b>431.0</b></li> <li>North-West: <b>411.0</b></li> <li>England: <b>584.6</b></li> </ul>	<ul style="list-style-type: none"> <li>This week: <b>231st</b></li> <li>Last week: <b>221st</b></li> </ul>	<ul style="list-style-type: none"> <li>This week: <b>6</b></li> <li>Cumulative: <b>1,132</b></li> </ul>	<ul style="list-style-type: none"> <li>1 dose: <b>84.6%</b></li> <li>2 doses: <b>79.5%</b></li> <li>3 doses: <b>83.5%</b></li> </ul>

## Confirmed Cases by Wirral Ward (map) (7-days to 11/02/22)



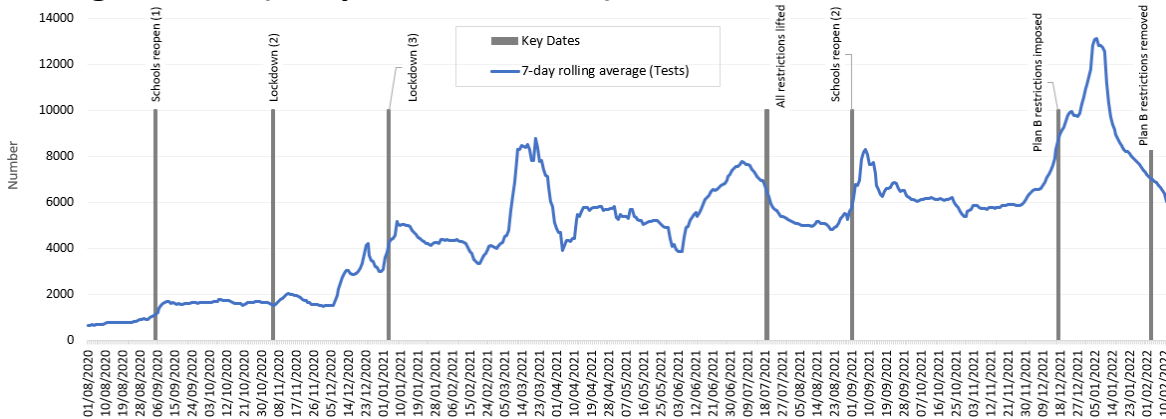
## Confirmed Cases by Wirral Ward (table) (7-days to 11/02/22)

Wirral Ward	Cases
Bebington	96
Hoylake and Meols	91
Birkenhead and Tranmere	77
Clatterbridge	75
Greasby, Frankby and Irby	75
West Kirby and Thurstaston	73
Leasowe and Moreton East	73
Pensby and Thingwall	72
Bromborough	71
New Brighton	71
Bidston and St. James	69
Oxton	68
Heswall	68
Liscard	68
Seacombe	67
Prenton	64
Wallasey	60
Clughton	59
Upton	57
Eastham	55
Moreton West and Saughall Massie	55
Rock Ferry	52
Unknown	14
<b>Wirral</b>	<b>1,530</b>

**Note(s):**

- <sup>1</sup> Positive cases sourced from Daily summary | Coronavirus in the UK (data.gov.uk) cumulative total is subject to retrospective addition which can mean it increases by more than the weekly total
- <sup>2</sup> Case rate - the cumulative number of confirmed cases of COVID-19 for the 7-day period divided by the total population of each area multiplied by 100,000
- <sup>3</sup> From 31/01/2022, COVID-19 cases in England now include reinfections (previously, figures only reported COVID-19 cases as the date of first infection, so individuals were only ever counted once). Infections will now be counted if there are at least 90 days between positive tests. Due to this change, cases are likely to show an increase of around 10%. More information can be found on the [Coronavirus dashboard](https://coronavirus.data.gov.uk) or please copy this web address <https://coronavirus.data.gov.uk> into your browser

## Testing in Wirral (7 days to 11/02/2022)

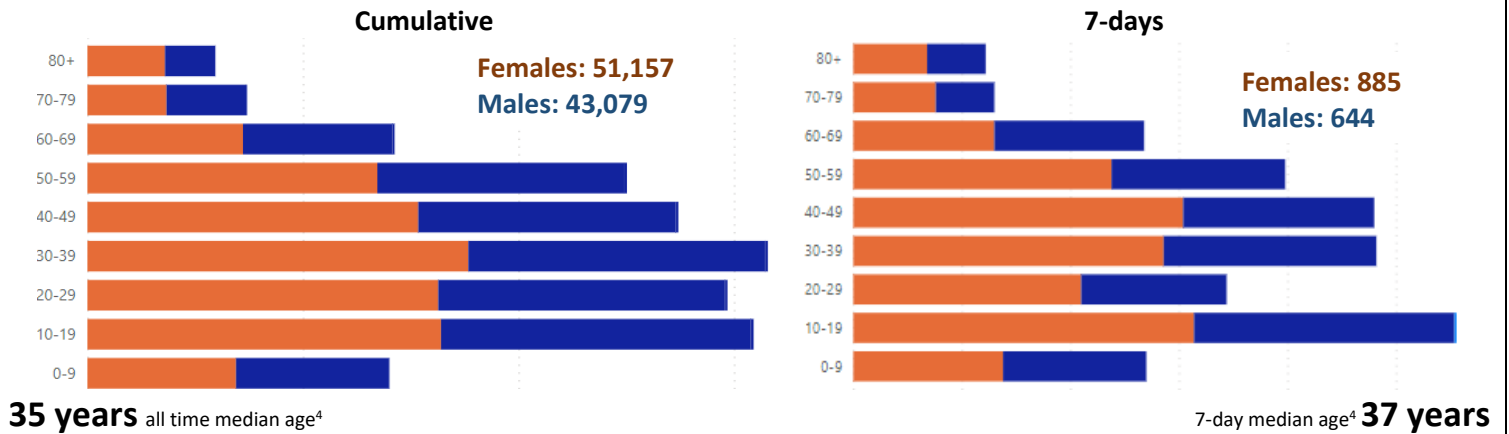


- There was a reduction in number of tests to 11 February (42,269 vs 48,894 last week)
- Testing rate was 409.1 in 7 days to 11 February (compared to 473.4 last week)

# The weekly Coronavirus (COVID-19) surveillance report for Wirral

Week ending: Friday 11<sup>th</sup> February 2022

## CONFIRMED COVID-19 CASES BY AGE AND GENDER

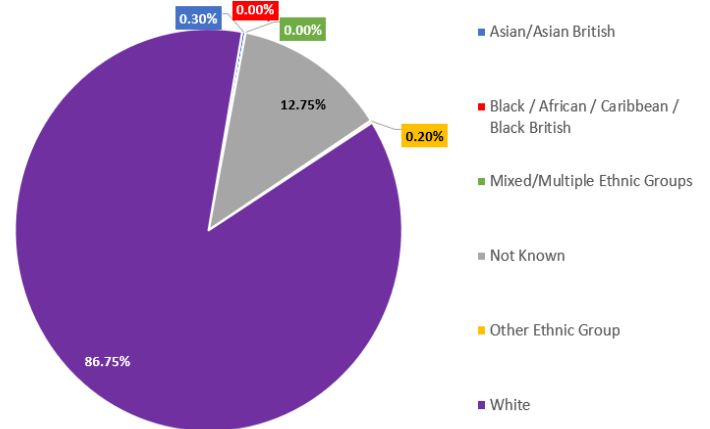
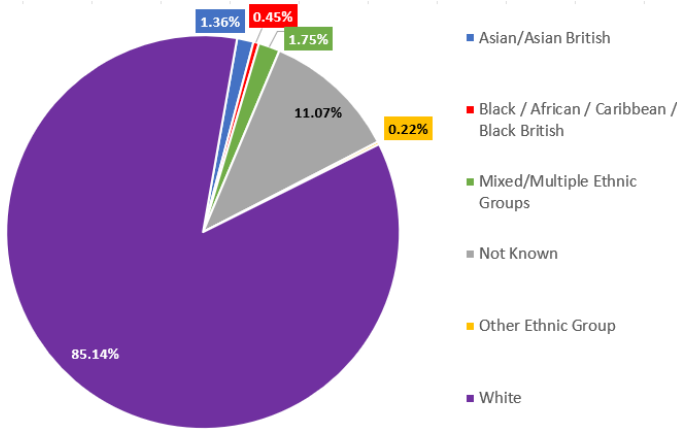


<sup>4</sup>median age is the middle value in a range - half of the cases are younger than this age and half are older (all persons)

**Note(s):**  
Some case records do not currently have full age and/or gender details and are therefore not included in the above chart; therefore, figures will not sum to headline totals

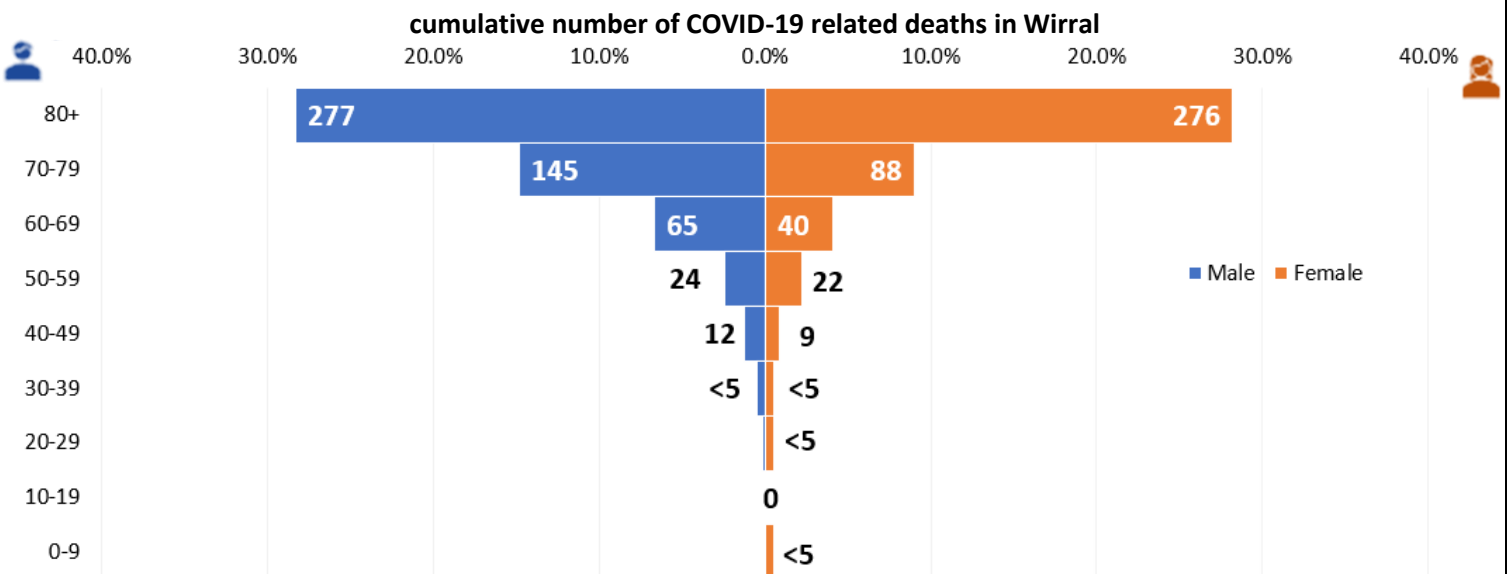
### ETHNICITY OF CONFIRMED COVID-19 CASES

### ETHNICITY OF COVID-19 DEATHS



**Note(s):**  
These data sets are analysed using the cumulative confirmed cases and COVID-19 related deaths in Wirral

## COVID-19 RELATED MORTALITY



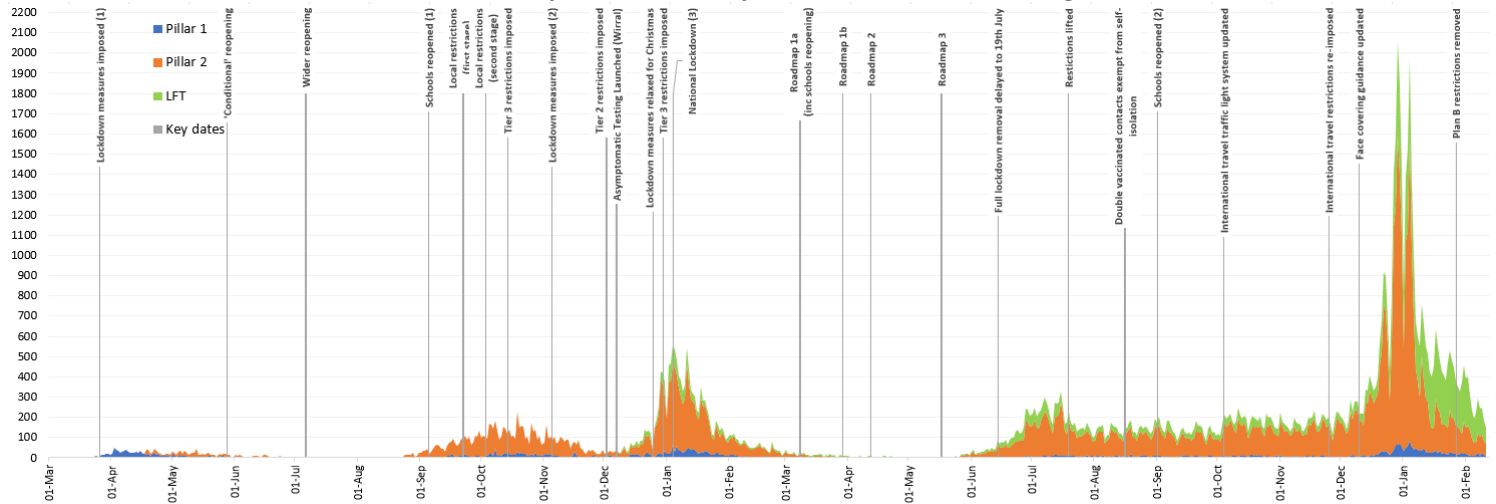
**Note(s):**  
The above data has followed the methodology of the PHE indicator for 'Deaths within 28 days of a positive COVID-19 test' since reporting for week ending 30<sup>th</sup> October and is therefore not comparable to reports prior to that week. The figures are still derived using a local live data source and so will therefore not exactly match the number of deaths officially reported by the Office for National Statistics or the PHE Coronavirus Tracker. Further validation of the external data sources with fully coded dates has led to changes in the numbers reported. From 31/01/2022, COVID-19 cases in England now include reinfections (previously, figures only reported COVID-19 cases as the date of first infection, so individuals were only ever counted once) this has increased the number of deaths. Some records do not currently have full age and/or gender details and are therefore not included in the above chart; therefore, figures will not sum to headline totals. Cases are subject to retrospective review and may be reallocated to other Local Authorities.

# The weekly Coronavirus (COVID-19) surveillance report for Wirral

Week ending: Friday 11<sup>th</sup> February 2022

## EPIDEMIC CURVE

number of positive cases by Pillar 1 and Pillar 2 testing<sup>5</sup>



<sup>5</sup>The most recent week is a partial week and only data from more than five days ago can be considered complete

### Note(s):

The data are shown by the date the specimen was taken

Pillar 1 data is for swab testing in PHE labs and NHS hospitals for those with a clinical need as well as staff

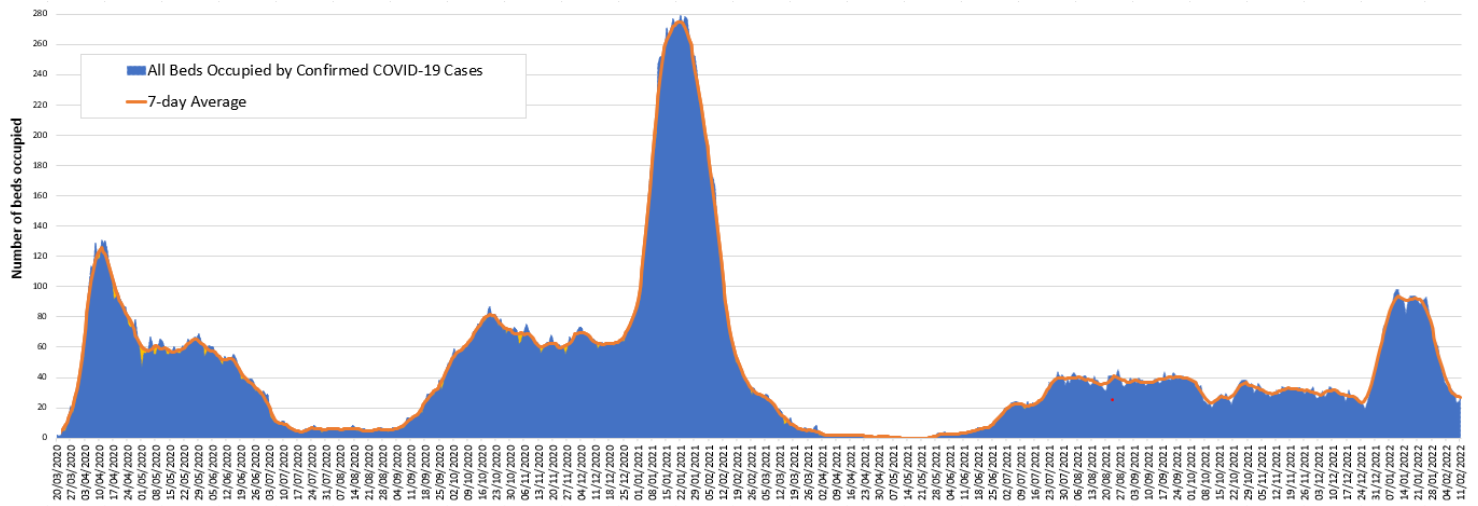
Pillar 2 data is for swab testing for the wider population, as set out in government guidance

LFT (lateral flow device) data is for rapid tests in the community (which also make up part of Pillar 2 testing)

Details around the government roadmap can be found here: <https://www.gov.uk/government/publications/covid-19-response-spring-2021/covid-19-response-spring-2021-summary>

## HOSPITALISED COVID-19 CASES

Number of beds occupied by confirmed COVID-19 patients by bed type (Wirral University Teaching Hospital (WUTH) NHS Foundation Trust)



### Note(s):

The peak of WUTH beds occupied by patients with COVID-19 is 279 (January 2021). This surpassed the previous peak of 131 (April 2020)

For more information on this report, please see the following links:

[About the data we use for our Weekly Surveillance Report](#)

[Data we use to produce the Weekly Surveillance Report](#)

[Frequently Asked Questions \(FAQs\)](#)

[Additional sources for data and information](#)