

Wirral
Compendium
of
Statistics
2018



INTRODUCTION

Wirral Council is pleased to present the eleventh annual edition of our Compendium of Statistics.

The compendium is a reference guide to the most recent information on the health and wellbeing of people living in Wirral. It is designed to accompany the [Public Health Annual Report](#) and support the local [Joint Strategic Needs Assessment \(JSNA\)](#).

It is strongly recommended that reference be made to the notes and definitions when using the information.

We would like to thank all the teams and individuals from Wirral Council and Wirral Clinical Commissioning Group (CCG) who contributed information and data for this compendium.

If you would like any further information please contact:

✉ jackfont@wirral.gov.uk

☎ 0151 666 5143

WIRRAL JSNA

It is important that good evidence underpins local health and wellbeing work. In order to enable this, local authorities and clinical commissioning groups have a statutory duty to create and maintain what is called a JSNA or Joint Strategic Needs Assessment for their area.

A JSNA should outline the health and wellbeing needs of local residents and identify inequalities and gaps in service provision. To accommodate the huge amount of information needed to do this, the JSNA for Wirral has been made available via the following website: <https://www.wirralintelligenceservice.org/>

The JSNA informed the development of Wirral's Joint [Health & Wellbeing Strategy](#) 2013-15 (the responsibility of the local Health & Wellbeing Board in Wirral).

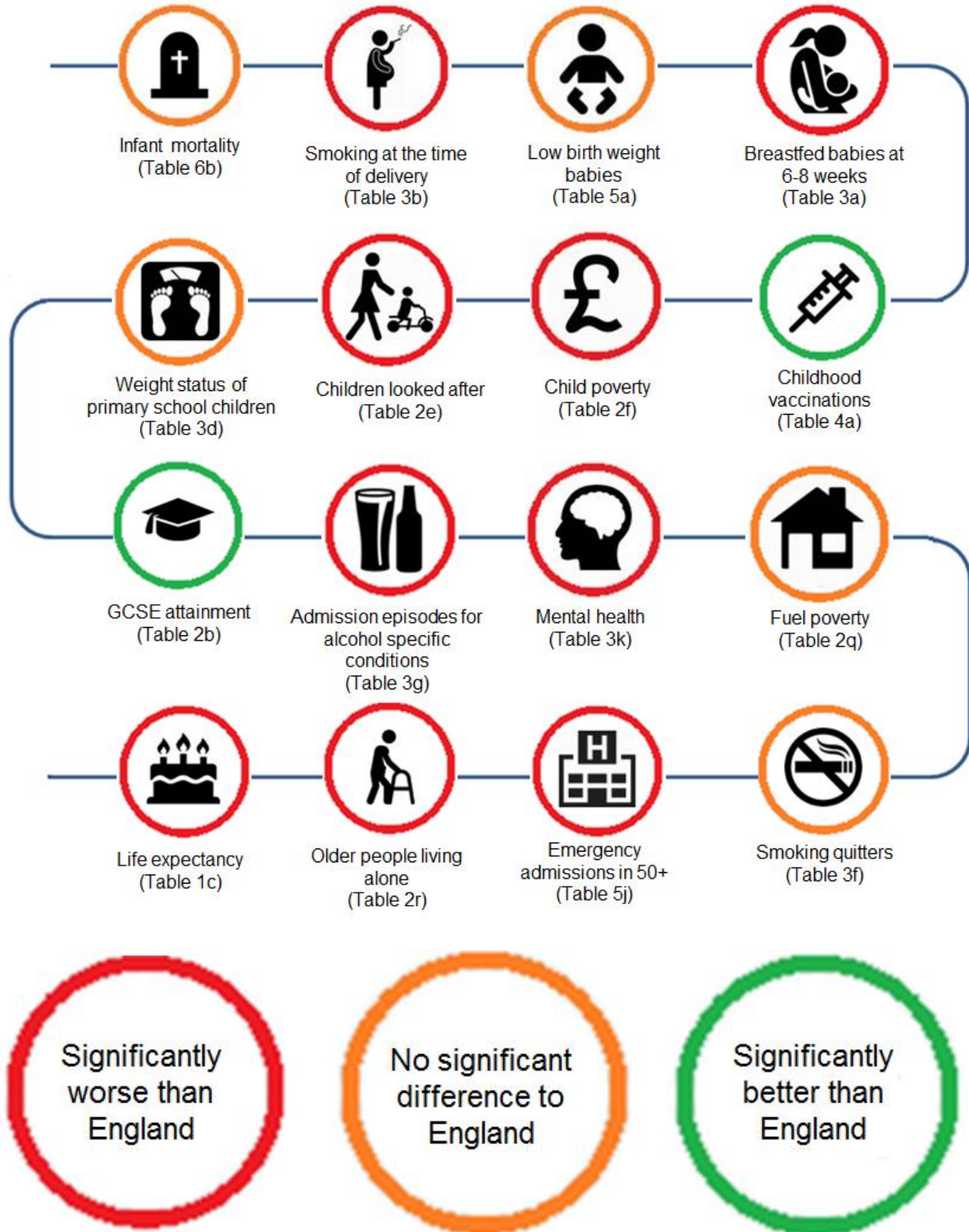
Whether you're an individual, part of a local community group or organisation, it is important that you have a voice in shaping local health and social care services. Getting involved in developing the JSNA will enable you to do this.

If you would like to find out more about Wirral's JSNA or get involved, please contact John Highton or Sarah Kinsella on:

✉ johnhighton@wirral.gov.uk or sarahkinsella@wirral.gov.uk

☎ 0151 666 5151 or 0151 666 5145

About Wirral



The data behind all of the above can be found on the following pages.

CONTENTS

1. POPULATION			
Table	Title	Year	Page
Table 1a	Trend in birth and fertility rates	2000 to 2017	6
Table 1b	Maternities, live and stillbirth rates	2004 to 2016	7
Table 1c	Trend in life expectancy at birth	1998-00 to 2014-16	8
Table 1d	Life expectancy at birth by gender and ward	2015-17	9
Table 1e	Estimated resident population by 5-year age group and gender	2017	10
Table 1f	GP registered population by 5-year age group and gender	2018	11
Table 1g	Estimated resident population by age group and ward	2016	12
Table 1h	Trend in estimated resident population by age group (persons)	1996 to 2017	13
Table 1i	Resident population projections by age group (persons)	2018 to 2038	14
Table 1j	Projected population of Wirral by ethnicity and change in population	2016 to 2031	15

2. WIDER DETERMINANTS			
Table 2a	School readiness	2016/17	16
Table 2b	Trend in educational attainment at key stage 4	2008 to 2016	17
Table 2c	Educational attainment at key stage 4 (new method)	2016 and 2017	17
Table 2d	Young people not in education, employment or training (NEET)	2018	18
Table 2e	Children looked after	2017	19
Table 2f	Child poverty	2013 to 2015	20
Table 2g	Average personal income by gender	2009 to 2017	21
Table 2h	Average household income	2016	22
Table 2i	Claimant count: number and percentage by gender, ward and constituency	2018	23
Table 2j	Employment and support allowance: number of claimants by condition	2017	24
Table 2k	Households with no access to a vehicle	2011	25
Table 2l	Anti-social behaviour rates	2016 and 2017	26
Table 2m	Domestic abuse	2010/11 - 2015/16	27
Table 2n	New dwellings	2011/12 - 2017/18	27
Table 2p	Deprivation by ward	2015	28
Table 2q	Fuel poverty	2016	29
Table 2r	Proportion of people aged over 65 living alone	2011	30

3. HEALTH IMPROVEMENT			
Table 3a	Trend in breastfeeding rates	2008/09 - 2016/17	31
Table 3b	Trend in smoking at time of delivery	2010/11 - 2016/17	32
Table 3c	Trend in hospital tooth extractions due to decay for children aged 10 and under	2011/12 - 2016/17	33
Table 3d	Weight status of primary school children	2016/17	34
Table 3e	Prevalence of overweight and obesity among adults	2013-16	35
Table 3f	Proportion of smokers quitting after four weeks	2000/01 - 2016/17	36
Table 3g	Indicators of alcohol-related harm	2016-17	37
Table 3h	Alcohol-related A&E attendances	2014/15 to 2016/17	37
Table 3i	Trend in successful drug and alcohol treatment	2010 to 2016	38
Table 3j	Population wellbeing	2016/17	39
Table 3k	Mental health prescribing	2014/15 - 2017/18	40

4. HEALTH PROTECTION AND SEXUAL HEALTH			
Table 4a	Uptake of childhood immunisations	2015/16 and 2016/17	41
Table 4b	Trend in teenage conceptions	1999-01 to 2014-16	42
Table 4c	Legal abortion rates by age of women	2016 and 2017	43
Table 4d	Trend in prevalence of HIV	2011 to 2016	44
Table 4e	Coverage of NHS cervical screening programme: women aged 25-49 and 50-64 years	2012/13 - 2016/17	45
Table 4f	Coverage of NHS breast cancer screening programme: women aged 53-70 years	2012/13 - 2016/17	46
Table 4g	Uptake of older people vaccinations	2015/16 and 2016/17	46

5. MORBIDITY, DISABILITY AND HEALTHCARE			
Table 5a	Trend in low birth weight babies	2001 to 2016	47
Table 5b	A&E attendances for unintentional injuries in children aged 0-4	2014/15 - 2017/18	48
Table 5c	Number of children with special education needs (SEN) known to schools	2015 to 2017	49
Table 5d	Number of people with a learning disability known to GPs	2014/15 - 2016/17	49
Table 5e	Carers known to Department of Adult Social Services (DASS) by ward	2018	50
Table 5f	Road collision casualties	2015-17	51
Table 5g	Incidence of most common cancers by gender	2015	52
Table 5h	GP held disease register prevalence rates	2016/17	53
Table 5i	Hospital admission rates for alcohol related conditions	2016/17	54
Table 5j	Emergency admissions in Wirral residents aged over 50 years	2014/15 - 2016/17 and 2015/16 - 2017/18	55

6. MORTALITY			
Table 6a	Infant and perinatal mortality rates	2013-15	56
Table 6b	Trend in infant mortality	2002-04 to 2014-16	57
Table 6c	Premature mortality from all cancers in persons under 75 years	2002-04 to 2014-16	58
Table 6d	Premature mortality from cardiovascular diseases in persons under 75 years	2002-04 to 2014-16	59
Table 6e	Premature mortality from respiratory diseases in persons under 75 years	2002-04 to 2014-16	60
Table 6f	Premature mortality from liver disease in persons under 75 years	2002-04 to 2014-16	61
Table 6g	Mortality from suicide and undetermined injuries	2002-04 to 2014-16	62
Table 6h	Standardised mortality ratios (SMR) by causes considered preventable	2014-16	63
Table 6i	Trend in mortality from all causes of death by gender and Wirral, North West and England	2005 to 2016	64
Table 6j	Alcohol specific mortality, all ages	2014-16	65
Table 6k	Mortality from all causes of death by ward	2015-17	66
Table 6l	Places of death in Wirral	2016	67

7. APPENDICES			
Table 7a	List of international classification of disease (ICD) codes for causes of death included in compendium	2015	68
Map 7a	Index of multiple deprivation 2015 scores	2015	69
Map 7b	Wirral ward boundaries with constituencies	2004	70
Map 7c	Wirral GP practices by locality and neighbourhood	2018	71

SECTION 1: POPULATION

TABLE 1a

TREND IN BIRTH AND FERTILITY RATES, WIRRAL AND ENGLAND, 2000 TO 2017

Year	Number of Live Births	Live Birth Rate	General Fertility Rate	
			Wirral	England
2000	3,438	10.9	53.0	55.9
2001	3,308	10.5	53.8	54.8
2002	3,270	10.4	53.3	54.7
2003	3,503	11.2	57.3	56.7
2004	3,521	11.2	57.9	58.0
2005	3,591	11.5	59.4	58.0
2006	3,575	11.5	59.8	59.7
2007	3,688	11.9	62.3	61.3
2008	3,787	12.2	65.0	62.8
2009	3,645	11.8	64.1	62.6
2010	3,771	12.2	67.3	64.1
2011	3,802	11.9	65.0	64.2
2012	3,816	11.9	66.0	64.9
2013	3,560	11.1	62.3	62.4
2014	3,536	11.0	62.7	62.2
2015	3,563	11.1	63.9	62.5
2016	3,434	10.7	62.6	62.5
2017	3,366	10.4	61.7	61.2

Notes and Definitions

1. Live Birth Rate: Number of live births per 1,000 mid-year residents
2. General Fertility Rate: Number of live births per 1,000 women aged 15-44 years

Source: Office for National Statistics ([ONS](#))

SECTION 1: POPULATION

TABLE 1b

MATERNITIES, LIVE AND STILLBIRTH RATES, WIRRAL, 2004 TO 2016

Year	Number of Maternities	Live Births			Stillbirths	
		Number of Live Births	Rate Per 1,000		Number of Stillbirths	Stillbirth Rate
			Crude Rate	GFR		
2004	3,482	3,521	11.2	57.9	18	5.1
2005	3,536	3,591	11.5	59.4	19	5.3
2006	3,541	3,575	11.5	59.8	20	5.6
2007	3,652	3,688	11.9	62.3	23	6.2
2008	3,732	3,787	12.2	65.0	15	3.9
2009	3,665	3,645	11.8	64.1	20	5.5
2010	3,738	3,771	12.2	67.3	33	8.8
2011	3,769	3,802	11.9	65.0	20	5.2
2012	3,781	3,816	11.9	66.0	17	4.4
2013	3,527	3,560	11.1	62.3	18	5.1
2014	3,518	3,536	11.0	62.7	19	5.3
2015	3,531	3,563	11.1	63.9	16	4.5
2016	3,391	3,434	10.7	62.6	16	4.7

Notes and Definitions

1. Maternities: A maternity may result in one or more live or stillborn babies
2. Crude Rate: Number of live births per 1,000 residents
3. General Fertility Rate (GFR): Live births per 1,000 women aged 15-44
4. Stillbirth Rate: Stillbirths are legally defined as foetal deaths occurring after 24 weeks of gestation. The stillbirth rate is the number of stillbirths per 1,000 total live and stillbirths

Source: Office for National Statistics ([ONS](#))

SECTION 1: POPULATION

TABLE 1c

TREND IN LIFE EXPECTANCY AT BIRTH, WITH 95% CONFIDENCE LIMITS,
WIRRAL, 1998-2000 TO 2014-2016

Time Period	Males			Females		
	Life Expectancy (Years)	95% Confidence Intervals		Life Expectancy (Years)	95% Confidence Intervals	
		Lower Limit	Upper Limit		Lower Limit	Upper Limit
1998-00	73.9	73.5	74.3	79.2	78.8	79.6
1999-01	74.3	73.9	74.7	79.7	79.3	80.0
2000-02	74.9	74.5	75.3	79.9	79.6	80.3
2001-03	75.2	74.8	75.6	80.0	79.6	80.3
2002-04	75.4	75.0	75.8	80.2	79.8	80.5
2003-05	75.5	75.1	76.0	80.3	79.9	80.6
2004-06	75.8	75.4	76.2	80.7	80.4	81.1
2005-07	75.9	75.5	76.3	80.9	80.5	81.2
2006-08	76.1	75.7	76.5	80.9	80.6	81.3
2007-09	76.5	76.1	76.9	80.9	80.5	81.3
2008-10	77.2	76.9	77.6	80.9	80.5	81.2
2009-11	77.5	77.1	77.9	81.5	81.2	81.9
2010-12	77.8	77.4	78.2	81.8	81.4	82.2
2011-13	77.7	77.3	78.1	82.3	81.9	82.6
2012-14	78.0	77.6	78.3	82.1	81.8	82.4
2013-15	77.9	77.6	78.3	81.9	81.5	82.2
2014-16	78.1	77.7	78.4	81.6	81.3	82.0

Notes and Definitions

1. Life expectancy at birth indicates the number of years a baby born in an area can expect to live if they experience current age and gender specific death rates throughout their life. It is not a guide to the remaining expectation of life at a later age (e.g. if life expectancy at birth in a particular area is 80 years, it does not follow that people aged 70 living in that area can expect to live for a further 10 years)
2. Data is presented as 3 calendar year rolling figures. Data was produced by aggregating deaths and population estimates for each three-year period (e.g. 1998-2000 etc.)
3. 95% Confidence Intervals (CIs) indicate the range within which the true value of the indicator has a 95% chance of falling. For example, a 95% CI of 77.9 to 78.6 (for men) means that we can be 95% certain the true value lies somewhere between these two values
4. Periodically, the Office for National Statistics (ONS) revises subnational population estimates. Therefore, life expectancy figures for England and local authorities in England are also then revised accordingly. For this reason previous versions of the Wirral Statistical Compendium may have different figures to those shown above

Source: Office for National Statistics ([ONS](#))

SECTION 1: POPULATION

TABLE 1d

LIFE EXPECTANCY IN YEARS AT BIRTH BY AREA AND GENDER, 2015-17

Area	Males			Females			Persons		
	Life Expectancy	95% CIs		Life Expectancy	95% CIs		Life Expectancy	95% CIs	
		LCL	UCL		LCL	UCL		LCL	UCL
Bebington	81.0	79.3	82.7	85.3	83.6	87.0	83.4	82.2	84.6
Bidston & St James	72.9	71.1	74.8	78.2	76.8	79.6	75.7	74.5	76.8
Birkenhead & Tranmere	73.6	71.7	75.4	80.0	78.1	81.8	76.7	75.4	78.0
Bromborough	77.3	75.8	78.7	79.7	78.1	81.2	78.5	77.5	79.6
Clatterbridge	80.1	78.7	81.5	81.7	80.4	83.0	80.9	79.9	81.8
Cloughton	77.5	75.8	79.2	81.2	79.1	83.3	79.5	78.2	80.8
Eastham	80.9	79.2	82.6	84.6	82.7	86.4	82.8	81.6	84.1
Greasby, Frankby & Irby	82.7	81.3	84.2	86.7	85.2	88.2	84.8	83.7	85.9
Heswall	84.0	81.5	86.6	86.9	85.7	88.2	85.5	84.1	86.9
Hoylake & Meols	80.7	79.0	82.5	82.6	80.6	84.5	81.7	80.4	83.0
Leasowe & Moreton East	77.5	75.7	79.3	79.9	78.2	81.7	78.8	77.5	80.0
Liscard	76.6	74.9	78.2	80.7	79.2	82.2	78.6	77.5	79.8
Moreton West & Saughall Massie	80.9	79.0	82.7	81.1	79.4	82.8	80.9	79.7	82.2
New Brighton	77.3	75.6	79.0	79.8	78.2	81.5	78.5	77.3	79.7
Oxton	76.1	74.0	78.2	80.8	79.8	81.8	78.8	77.7	80.0
Pensby & Thingwall	82.0	80.5	83.5	86.7	85.2	88.2	84.3	83.2	85.4
Prenton	81.1	79.3	82.9	83.0	81.3	84.8	82.2	80.9	83.5
Rock Ferry	72.8	70.8	74.7	78.0	76.3	79.7	75.3	74.0	76.6
Seacombe	73.3	71.5	75.1	79.6	77.5	81.7	76.3	74.9	77.6
Upton	77.0	75.7	78.4	79.2	77.6	80.7	78.2	77.1	79.2
Wallasey	80.2	78.1	82.2	86.0	84.4	87.7	83.1	81.8	84.5
West Kirby & Thurstaston	81.1	79.0	83.1	83.7	81.8	85.6	82.5	81.1	83.9
Wirral	78.3	78.0	78.7	81.8	81.5	82.2	80.1	79.9	80.4

Notes and Definitions

1. CI, LCL and UCL are acronyms for Confidence Intervals, Lower Confidence Limit and Upper Confidence Limit

Source: Office for National Statistics ([ONS](https://www.ons.gov.uk))

SECTION 1: POPULATION

TABLE 1e

ESTIMATED RESIDENT POPULATION BY 5-YEAR AGE GROUP AND GENDER,
WIRRAL, MID-2017

Age Group	Males		Females		Persons	
	Number	%	Number	%	Number	%
0-4	9,533	3.0	8,903	2.8	18,436	5.7
5-9	10,072	3.1	9,669	3.0	19,741	6.1
10-14	9,617	3.0	8,988	2.8	18,605	5.8
15-19	9,016	2.8	8,502	2.6	17,518	5.4
20-24	8,375	2.6	7,609	2.4	15,984	5.0
25-29	9,442	2.9	9,533	3.0	18,975	5.9
30-34	8,720	2.7	9,674	3.0	18,394	5.7
35-39	8,815	2.7	9,451	2.9	18,266	5.7
40-44	8,796	2.7	9,770	3.0	18,566	5.8
45-49	10,914	3.4	11,637	3.6	22,551	7.0
50-54	11,400	3.5	12,698	3.9	24,098	7.5
55-59	11,158	3.5	11,654	3.6	22,812	7.1
60-64	9,602	3.0	10,426	3.2	20,028	6.2
65-69	9,690	3.0	10,160	3.1	19,850	6.1
70-74	8,269	2.6	9,151	2.8	17,420	5.4
75-79	5,646	1.7	7,069	2.2	12,715	3.9
80-84	3,938	1.2	5,405	1.7	9,343	2.9
85-89	2,343	0.7	3,795	1.2	6,138	1.9
90+	989	0.3	2,367	0.7	3,356	1.0
All Ages	156,335	48.4	166,461	51.6	322,796	100.0

Notes and Definitions

1. The table shows the estimated resident population at mid-year 2017 for Wirral local authority
2. ONS recommend that population estimates should be rounded to the nearest one hundred persons. The figures presented in the above table are not rounded to the nearest 100 to allow further calculations. Consequently, as these are estimates, they may not be 100% accurate at this level of detail

Source: Office for National Statistics ([ONS](#))

SECTION 1: POPULATION

TABLE 1f

GP REGISTERED POPULATION BY 5-YEAR AGE GROUP AND GENDER,
WIRRAL, 2018

Age Groups	Males		Females		Persons	
	Number	%	Number	%	Number	%
0-4	9,232	2.7	8,475	2.5	17,707	5.3
5-9	10,187	3.0	9,641	2.9	19,828	5.9
10-14	9,821	2.9	9,321	2.8	19,142	5.7
15-19	9,036	2.7	8,518	2.5	17,554	5.2
20-24	9,068	2.7	8,629	2.6	17,697	5.3
25-29	10,601	3.2	10,284	3.1	20,885	6.2
30-34	10,413	3.1	10,612	3.2	21,025	6.3
35-39	10,163	3.0	10,116	3.0	20,279	6.0
40-44	9,462	2.8	9,775	2.9	19,237	5.7
45-49	11,802	3.5	11,797	3.5	23,599	7.0
50-54	12,333	3.7	12,711	3.8	25,044	7.5
55-59	11,992	3.6	11,899	3.5	23,891	7.1
60-64	10,308	3.1	10,495	3.1	20,803	6.2
65-69	9,623	2.9	10,069	3.0	19,692	5.9
70-74	8,695	2.6	9,348	2.8	18,043	5.4
75-79	5,749	1.7	7,091	2.1	12,840	3.8
80-84	4,031	1.2	5,384	1.6	9,415	2.8
85-89	2,360	0.7	3,714	1.1	6,074	1.8
90+	1,018	0.3	2,334	0.7	3,352	1.0
All Ages	165,894	49.4	170,213	50.6	336,107	100.0

Notes and Definitions

1. Figures are based on the patient lists of GP practices in Wirral
2. The data presented is a quarterly snapshot from the GP Payments system maintained by NHS Digital. This release was extracted on 1 April 2018
3. The differences between ONS populations (resident, shown in Table 1e) and GP populations (registered, shown in this table) is a national issue due to several factors, such as patients not informing their GP when they leave an area or people who live somewhere else for most of the year (e.g. students, retirees living abroad)

Source: [NHS Digital](#)

SECTION 1: POPULATION

TABLE 1g

ESTIMATED RESIDENT POPULATION BY AGE GROUP AND AREA, MID-2016

Area	Total Population	Under 15	15-44	45-64	65-84	85+
Bebington	15,584	2,764	5,060	4,371	2,877	512
Bidston & St James	15,630	3,540	6,067	3,852	1,974	197
Birkenhead & Tranmere	16,542	3,609	7,094	4,019	1,618	202
Bromborough	15,501	2,838	5,732	4,168	2,393	370
Clatterbridge	14,253	2,093	4,097	4,025	3,583	455
Claughton	14,565	2,398	4,809	4,152	2,704	502
Eastham	14,231	2,381	4,559	3,879	2,988	424
Greasby, Frankby & Irby	13,843	2,010	3,839	4,169	3,319	506
Heswall	13,257	1,905	3,230	3,875	3,600	647
Hoylake & Meols	13,255	2,027	4,054	3,951	2,617	606
Leasowe & Moreton East	14,626	2,955	5,112	3,871	2,368	320
Liscard	15,734	2,859	5,760	4,255	2,505	355
Moreton West & Saughall Massie	13,973	2,236	4,585	4,092	2,711	349
New Brighton	14,919	2,376	5,214	4,397	2,508	424
Oxton	13,873	2,082	4,724	3,838	2,851	378
Pensby & Thingwall	12,973	1,923	3,692	3,702	3,183	473
Prenton	14,475	2,543	4,792	4,222	2,531	387
Rock Ferry	14,487	3,033	5,650	3,603	1,885	316
Seacombe	15,626	3,527	6,322	3,713	1,836	228
Upton	16,373	3,042	5,631	4,292	2,817	591
Wallasey	14,854	2,312	4,609	4,578	2,844	511
West Kirby & Thurstaston	12,664	2,008	3,370	3,795	2,957	534
Birkenhead Constituency	89,572	17,242	32,859	24,587	15,149	2,238
Wallasey Constituency	89,732	14,137	26,554	24,000	17,397	2,858
Wirral South Constituency	72,826	11,160	23,007	20,251	13,784	2,011
Wirral West Constituency	69,108	13,922	25,582	19,981	12,339	2,180
Wirral	321,238	56,461	108,002	88,819	58,669	9,287

Notes and Definitions

1. These are estimated figures and are not guaranteed to be 100% accurate at this level of detail

Source: Office for National Statistics ([ONS](#))

SECTION 1: POPULATION

TABLE 1h

TREND IN ESTIMATED RESIDENT POPULATION BY AGE GROUP (PERSONS),
WIRRAL, MID-1996 TO MID-2017

Mid-Year	Population (thousands)						All Ages
	Under 20	20-49	50-64	65-74	75-84	85+	
1996	83.0	128.4	53.7	31.2	19.6	6.8	322.7
1997	82.4	125.5	54.9	30.9	19.7	6.9	320.4
1998	82.1	123.1	56.1	30.4	19.7	7.1	318.6
1999	81.9	120.9	57.0	30.4	19.7	7.1	317.0
2000	81.4	120.0	57.9	30.2	19.8	7.1	316.5
2001	81.0	118.4	58.4	30.1	19.9	7.1	315.0
2002	80.1	114.9	58.4	29.6	20.1	7.0	310.2
2003	80.1	116.5	59.6	29.9	20.8	7.0	313.8
2004	79.4	116.2	59.9	29.7	21.0	7.0	313.1
2005	78.4	116.8	60.2	29.5	21.1	7.2	313.1
2006	77.4	116.1	60.1	29.1	20.9	7.6	311.2
2007	76.7	115.5	60.3	28.9	20.9	7.9	310.2
2008	76.0	114.8	60.7	29.2	20.9	7.9	309.5
2009	75.0	113.6	61.4	29.6	20.9	8.1	308.5
2010	74.5	113.2	61.9	30.1	21.0	8.2	308.8
2011	75.1	119.4	64.4	31.3	21.3	8.3	319.8
2012	74.9	117.9	64.1	33.2	21.5	8.6	320.2
2013	74.7	116.6	64.4	34.4	21.5	8.7	320.3
2014	74.7	115.3	64.9	35.4	21.6	9.0	320.9
2015	74.5	113.9	65.6	36.0	21.8	9.1	320.9
2016	74.4	112.8	66.0	36.8	21.9	9.3	321.2
2017	74.3	112.7	66.9	37.3	22.1	9.5	322.8

Notes and Definitions

1. The population estimates given are ONS resident population estimates for mid-1996 to mid-2017
2. The estimated resident population of an area includes all people who usually live there, whatever their nationality. Wherever possible, members of Armed Forces in England and Wales are included in the district in which they are stationed. Armed Forces stationed outside of England and Wales are not included. Students are taken to be resident at their term time address
3. These population estimates are presented in thousands and have been rounded to the nearest hundred for presentation purposes. Figures for individual age groups may not add up to the total figure as a result of rounding
4. Estimates are adjusted when the Census is carried out which is why there was a large increase between 2010-2011

Source: Office for National Statistics ([ONS](#))

SECTION 1: POPULATION

TABLE 1i

RESIDENT POPULATION PROJECTIONS BY AGE GROUP (PERSONS),
WIRRAL, MID-2018 TO MID-2038

Age Group	Populations (thousand)					% Change 2018-2038
	2018	2023	2028	2033	2038	
0-4	18.4	17.7	17.2	16.6	16.6	-9.8
5-9	19.8	19.3	18.7	18.1	17.6	-11.1
10-14	19.0	20.3	19.8	19.2	18.7	-1.6
15-19	17.0	18.0	19.3	18.7	18.2	7.1
20-24	15.6	13.6	14.4	15.5	15.1	-3.2
25-29	18.6	17.1	15.2	16.1	17.4	-6.5
30-34	18.9	19.1	17.7	15.8	16.8	-11.1
35-39	18.6	19.6	20.0	18.5	16.6	-10.8
40-44	18.0	19.3	20.3	20.8	19.3	7.2
45-49	22.0	18.2	19.6	20.6	21.1	-4.1
50-54	23.7	22.0	18.3	19.7	20.7	-12.7
55-59	23.2	23.5	21.9	18.3	19.8	-14.7
60-64	20.2	22.8	23.2	21.6	18.1	-10.4
65-69	19.5	19.5	22.1	22.5	21.1	8.2
70-74	18.2	18.2	18.3	20.9	21.4	17.6
75-79	13.0	16.3	16.4	16.6	19.1	46.9
80-84	9.6	10.5	13.4	13.6	14.1	46.9
85-89	6.0	6.4	7.3	9.5	9.8	63.3
90+	3.4	3.7	4.2	5.0	6.8	100.0
All ages	322.8	325.2	326.9	327.8	328.3	1.7

Notes and Definitions

1. The latest subnational population projections are based on the 2016 mid-year population estimates and project forward the population from 2018 to 2038
2. ONS population estimates are presented in thousands and have been rounded to the nearest hundred for presentation purposes. Figures for individual age groups may not add up to the total figure due to rounding
3. The projections are trend-based projections, which mean assumptions for future levels of births, deaths and migration are based on observed levels
4. Percentage change is proportional to the population sizes e.g. the 0-4 age group in 2018 is 18.4 and for 2038 it is 16.6. The actual difference of -1,800 people equates to a -9.8% reduction

Source: Office for National Statistics ([ONS](#))

SECTION 1: POPULATION

TABLE 1j

PROJECTED POPULATION OF WIRRAL BY ETHNICITY AND CHANGE IN POPULATION BETWEEN 2016 TO 2031

Ethnic Group	2016	2021	2026	2031	Number change	% change 2016-31
White: British, Irish, Gypsy, Irish Traveller	308,343	310,265	311,349	311,530	3,187	1.0
White: Other White	5,283	6,803	8,313	9,850	4,567	86.5
Mixed/Multiple Ethnic Groups	3,939	4,641	5,359	6,116	2,177	55.3
Asian / Asian British: Chinese	1,747	2,000	2,317	2,703	956	54.7
Asian / Asian British: Indian	1,412	1,565	1,752	1,938	526	37.2
Asian / Asian British: Bangladeshi	1,016	1,189	1,372	1,570	554	54.5
Asian / Asian British: Pakistani	187	177	185	199	12	6.7
Asian / Asian British: Other Asian	1,425	1,777	2,100	2,416	991	69.6
Black / Black British: Black African	367	371	403	446	79	21.5
Black / Black British: Black Caribbean	216	239	253	260	44	20.4
Black / Black British: Other Black	117	127	140	156	39	33.3
Other Ethnic Group	528	551	583	621	93	17.7
Total Population	324,580	329,706	334,127	337,805	13,225	4.1

Notes and Definitions

1. These results are not comparable with previous versions of the Statistical Compendium due to changes in the categorisation of ethnic groups in the ETHPOP database or with tables produced by ONS
2. Percentage change is proportional to the population sizes e.g. the White: Other White group in 2016 is 5,283 and for 2031 it is 9,850. There is a difference of +4,567 which is 86.5%

Source: Ethnicity Population Database ([ETHPOP](#))

SECTION 2: WIDER DETERMINANTS OF HEALTH

TABLE 2a

SCHOOL READINESS, ALL CHILDREN AND CHILDREN IN RECEIPT OF FREE SCHOOL MEALS (FSM), BY AREA, 2016/17

Indicator	Wirral			North West			England		
	%	95% Confidence Intervals		%	95% Confidence Intervals		%	95% Confidence Intervals	
		Lower Limit	Upper Limit		Lower Limit	Upper Limit		Lower Limit	Upper Limit
All Children (age 5) achieving a good level of development at the end of Reception	69.4	67.9	70.8	67.9	67.6	68.2	70.7	70.6	70.8
Children (age 5) with FSM achieving a good level of development at the end of Reception	52.5	49.0	56.0	53.2	52.4	54.0	56.0	55.7	56.3
All Year 1 pupils (age 6) achieving the expected level in the phonics screening check	76.4	75.0	77.7	80.0	79.8	80.3	81.1	81.0	81.2
Year 1 pupils (age 6) with FSM achieving the expected level in the phonics screening check	64.0	60.5	67.4	67.2	66.4	67.9	68.4	68.1	68.7

Notes and Definitions

1. These measures are outcomes in the current [Public Health Outcomes Framework](#) (Indicators 1.02i and 1.02ii)
2. Children are defined as having reached a good level of development if they achieve at least the expected level in the early learning goals in the prime areas of learning (personal, social and emotional development; physical development; and communication and language) and the early learning goals in the specific areas of mathematics and literacy
3. Year 1 pupils achieving the expected level in the phonics screening check were deemed to have met the required standard if they scored 32 or more out of a possible 40
4. Percentages were calculated using all eligible children in their local authority or all eligible children in receipt of Free School Meals in their local authority as the denominator

Source: Public Health Outcomes Framework, [Public Health England \(PHE\)](#)

SECTION 2: WIDER DETERMINANTS OF HEALTH

TABLE 2b

TREND IN EDUCATIONAL ATTAINMENT AT KEY STAGE 4 (GCSE), ALL CHILDREN AND CHILDREN IN RECEIPT OF FREE SCHOOL MEALS (FSM), WIRRAL, 2008 TO 2016

Key Stage 4 / GCSE (%)	2008	2009	2010	2011	2012	2013	2014	2015	2016
All Pupils achieving 5 or more A* - C grades (including English & Maths)	50.2	53.8	58.7	64.1	65.4	66.2	60.0	61.9	62.2
Pupils eligible for FSM achieving 5 or more A* - C grades (including English & Maths)	21.9	25.7	31.8	38.6	40.7	37.6	30.0	34.7	35.7
Pupils not eligible for FSM achieving 5 or more A* - C grades (including English & Maths)	59.5	62.6	67.9	72.8	70.7	72.4	65.7	66.9	71.3

Notes and Definitions

1. Free School Meals (FSM) eligibility is based on household income. Please see [Department for Education](#) website for more details
2. Major reforms in the way Key Stage 4 (GCSE) performance is measured were introduced in 2014, e.g. one change was that only the results of a pupil's first attempt at a GCSE are now counted. This affects figures from 2014 onwards and is the reason performance dropped slightly between 2013 and 2014
3. In 2016, pupils could achieve the English component of this with A* - C in English language or literature. In 2015 pupils had to achieve an A* - C in English language and have sat an English literature exam. The change means a higher proportion of pupils achieve the measure and therefore 2016 results for FMS and non-FSM cannot be compared to previous years.
4. As this table cannot be updated, this will be the last time it appears in the Wirral Statistical Compendium

Source: Local Authority Interactive Tool ([LAIT](#)) Department for Education ([DfE](#))

SECTION 2: WIDER DETERMINANTS OF HEALTH

TABLE 2c

TREND IN EDUCATIONAL ATTAINMENT AT KEY STAGE 4 (GCSE), ALL CHILDREN AND CHILDREN IN RECEIPT OF FREE SCHOOL MEALS (FSM), BY AREA, 2016 AND 2017 (NEW METHOD)

Key Stage 4 / GCSE	2016			2017		
	Wirral	North West	England	Wirral	North West	England
Average Attainment 8 score - all pupils	51.8	49.4	48.5	48.1	45.6	44.6
Average Attainment 8 score - eligible for FSM	37.8	37.7	39.1	36.4	34.4	35.1
Average Attainment 8 score - not eligible for FSM	54.2	51.5	51.8	50.3	47.6	48.2

Notes and Definitions

1. In the new grading system, attainment 8 will be used to judge school performance. This is a record of a student's average achievement over 8 subjects. For more information please visit the following website: <https://www.gov.uk/government/publications/progress-8-school-performance-measure>

Source: Local Authority Interactive Tool ([LAIT](#)) Department for Education ([DfE](#))

SECTION 2: WIDER DETERMINANTS OF HEALTH

TABLE 2d

YOUNG PEOPLE (BY COHORT) NOT IN EDUCATION, EMPLOYMENT OR TRAINING (NEET), OR NOT KNOWN, BY AREA, 2018

Area	Cohort			All Cohorts	
	16/17	17/18	18/19	Number	%
Bebington	0.8%	0.8%	1.5%	16	3.1%
Bidston and St James	2.5%	4.3%	4.2%	66	11.0%
Birkenhead and Tranmere	1.5%	3.3%	5.2%	67	10.0%
Bromborough	0.7%	2.6%	2.0%	24	5.3%
Clatterbridge	0.4%	1.5%	0.8%	13	2.8%
Claughton	0.7%	2.8%	3.9%	40	7.4%
Eastham	1.6%	1.1%	1.1%	17	3.9%
Greasby, Frankby and Irby	0.4%	1.6%	1.8%	17	3.8%
Heswall	0.2%	0.5%	0.2%	*	0.9%
Hoylake and Meols	0.0%	0.7%	1.4%	*	2.1%
Leasowe and Moreton East	1.6%	2.4%	2.6%	33	6.7%
Liscard	1.3%	3.7%	3.7%	45	8.7%
Moreton West and Saughall Massie	1.2%	1.7%	3.8%	28	6.7%
New Brighton	2.2%	3.1%	3.5%	40	8.8%
Oxton	0.7%	2.2%	2.5%	22	5.4%
Pensby and Thingwall	1.0%	2.0%	2.0%	20	5.1%
Prenton	1.2%	2.6%	1.8%	28	5.5%
Rock Ferry	2.7%	3.2%	4.0%	52	9.9%
Seacombe	1.7%	2.4%	4.3%	45	8.4%
Upton	2.2%	2.8%	3.1%	47	8.1%
Wallasey	0.2%	1.5%	1.1%	13	2.8%
West Kirby and Thurstaston	0.5%	0.5%	0.7%	*	1.6%
Birkenhead Constituency	1.9%	3.7%	4.4%	275	5.0%
Wallasey Constituency	1.4%	2.5%	3.2%	204	4.7%
Wirral South Constituency	0.7%	1.3%	1.2%	74	1.6%
Wirral West Constituency	0.9%	1.6%	1.9%	100	2.4%
Wirral	1.3%	2.5%	3.7%	823	7.5%

Notes and Definitions

1. This data is accurate as of 22nd May 2018
2. Cohorts are based on a person's birthdate and then sectioned by the school year that they attended e.g. those in the 16/17 age cohort were born between the 01-09-2000 and 31-08-2001 school year
3. The overall Wirral figure includes those with no known address so figures may not sum
4. Figures less than 10 have been suppressed for reasons of confidentiality (*)

Source: Children & Young People's Department, Wirral Council

SECTION 2: WIDER DETERMINANTS OF HEALTH

TABLE 2e

CHILDREN LOOKED AFTER, BY AREA, 2017

Area	Number	Rate per 10,000
Bebington	13	39.4
Bidston & St James	137	329.1
Birkenhead & Tranmere	108	254.1
Bromborough	31	94.3
Clatterbridge	*	7.7
Cloughton	35	118.9
Eastham	16	56.3
Greasby, Frankby & Irby	*	24.0
Heswall	*	16.8
Hoyle & Meols	*	15.8
Leasowe & Moreton East	31	90.2
Liscard	46	135.2
Moreton West & Saughall Massie	14	52.3
New Brighton	20	69.6
Oxton	20	80.2
Pensby & Thingwall	*	34.5
Prenton	25	81.8
Rock Ferry	103	287.5
Seacombe	71	172.9
Upton	37	101.6
Wallasey	16	57.1
West Kirby & Thurstaston	*	36.7
Birkenhead Constituency	428	243.7
Wallasey Constituency	198	102.6
Wirral South Constituency	66	45.8
Wirral West Constituency	64	47.6
Wirral	**767	113.4
England		62.0

** This figure includes children originally from outside Wirral, who were placed in Wirral

Notes and Definitions

1. Children assigned to the Ward where their family was last resident prior to becoming looked after
2. Numbers for Wirral Wards with less than 10 cases have been suppressed for reasons of confidentiality (*)
3. Children Looked After is defined as children between the ages of 0 and 17 years who are in the care of the Local Authority
4. Rates calculated using Wirral ONS 2016 mid-year populations for children aged 0 to 17 years (per 10,000 population)

Source: Wirral Council Children & Young People's Team/DCSF Annual Statistical Return (SSDA903)

SECTION 2: WIDER DETERMINANTS OF HEALTH

TABLE 2f

CHILDREN IN LOW INCOME FAMILIES (CHILD POVERTY) BY AREA, 2013 TO 2015

Area	2013	2014	2015
Bebington	13.1%	13.4%	11.2%
Bidston & St James	43.5%	45.7%	39.9%
Birkenhead & Tranmere	43.2%	44.8%	39.2%
Bromborough	21.0%	22.9%	19.3%
Clatterbridge	4.5%	6.0%	5.4%
Claughton	20.0%	22.1%	18.3%
Eastham	11.3%	11.4%	10.0%
Greasby, Frankby & Irby	4.6%	6.1%	5.0%
Heswall	3.9%	4.7%	3.6%
Hoyle & Meols	6.2%	7.0%	5.6%
Leasowe & Moreton East	30.3%	31.1%	26.5%
Liscard	27.2%	29.2%	24.7%
Moreton West & Saughall Massie	17.1%	19.6%	14.2%
New Brighton	18.7%	22.1%	18.7%
Oxton	13.4%	14.5%	11.0%
Pensby & Thingwall	10.9%	11.4%	8.9%
Prenton	13.7%	16.0%	14.0%
Rock Ferry	37.5%	40.5%	34.4%
Seacombe	39.9%	41.1%	36.6%
Upton	25.2%	27.9%	22.6%
Wallasey	8.7%	10.9%	8.7%
West Kirby & Thurstaston	7.6%	7.8%	6.9%
Wirral	21.5%	23.3%	19.9%
North West	20.3%	22.6%	18.5%
England	18.0%	19.9%	16.6%

Notes and Definitions

1. Percentage of all dependent children aged under 20 in relative poverty (living in households where income is less than 60 per cent of median household income before housing costs)
2. Measure is known as Children in Low Income Families (Local Measure) by HMRC

Source: Her Majesty's Revenue and Customs ([HMRC](#))

SECTION 2: WIDER DETERMINANTS OF HEALTH

TABLE 2g

AVERAGE PERSONAL INCOME BY GENDER, BY WIRRAL AND ENGLAND, 2009 TO 2017

Year	Wirral			England		
	Male	Female	Persons	Male	Female	Persons
2009	£27,096	£16,231	£20,190	£27,032	£16,250	£21,680
2010	£26,270	£16,487	£21,211	£26,732	£16,431	£21,564
2011	£24,933	£16,201	£20,644	£26,807	£16,271	£21,454
2012	£26,365	£15,952	£21,317	£27,040	£16,750	£21,813
2013	£27,016	£17,271	£21,433	£27,588	£17,090	£22,168
2014	£27,642	£16,745	£21,650	£27,562	£17,226	£22,354
2015	£28,648	£16,944	£22,317	£28,000	£17,500	£22,716
2016	£28,018	£17,418	£22,167	£28,801	£18,000	£22,716
2017	£28,499	£17,556	£22,244	£29,237	£18,255	£23,743

Notes and Definitions

1. Figures are median, annual, gross figures
2. The median is the value below which 50% of employees fall. It is preferred over the mean for earnings data as it is influenced less by extreme values and because of the skewed distribution of earnings data.
3. Figures are for all workers, regardless of whether full or part-time. This contributes to lower overall figures for women, because as well as earning less than men, women are also more likely to be in part-time work

Source: [NOMIS](#)

SECTION 2: WIDER DETERMINANTS OF HEALTH

TABLE 2h

AVERAGE HOUSEHOLD INCOME, BY AREA, 2016

Area	Number of Households	Average Household Income (£'s)
Bebington	7,336	36,699
Bidston & St James	7,185	22,534
Birkenhead & Tranmere	8,712	23,602
Bromborough	7,476	31,295
Clatterbridge	6,916	44,273
Cloughton	7,339	34,377
Eastham	6,654	36,656
Greasby, Frankby & Irby	6,648	42,371
Heswall	6,254	53,286
Hoyle & Meols	6,299	47,862
Leasowe & Moreton East	6,854	29,249
Liscard	7,385	27,199
Moreton West & Saughall Massie	6,686	33,155
New Brighton	7,368	31,242
Oxton	6,787	35,594
Pensby & Thingwall	6,108	38,411
Prenton	6,933	35,985
Rock Ferry	6,822	24,294
Seacombe	7,711	23,985
Upton	7,718	29,045
Wallasey	7,093	37,625
West Kirby & Thurstaston	6,125	53,336
Birkenhead Constituency	43,779	29,398
Wallasey Constituency	43,097	30,409
Wirral South Constituency	34,636	40,442
Wirral West Constituency	32,898	42,205
Wirral	154,411	34,563
England	22,826,121	37,521

Notes and Definitions

1. The figures in this table were calculated using Mosaic Public Sector 2016 estimates and ONS population data
2. Due to changes in methodology, these figures cannot be compared to those published in previous versions

Source: Mosaic Public Sector

SECTION 2: WIDER DETERMINANTS OF HEALTH

TABLE 2i

CLAIMANT COUNT, NUMBER AND PERCENTAGE BY WORKING-AGE
POPULATION BY GENDER AND AREA, MAY 2018

Area	Male		Female		Persons	
	Number	%	Number	%	Total	%
Bebington	80	1.8	55	1.2	135	1.5
Bidston & St James	320	7.4	230	4.3	550	5.7
Birkenhead & Tranmere	580	10.7	305	5.6	885	8.1
Bromborough	130	2.7	95	1.9	225	2.3
Clatterbridge	35	0.9	25	0.6	60	0.7
Claughton	185	4.2	80	1.8	260	3.0
Eastham	75	1.8	45	1.0	120	1.4
Greasby, Frankby & Irby	60	1.6	30	0.7	90	1.2
Heswall	30	0.9	25	0.7	55	0.8
Hoyle & Meols	55	1.5	35	0.9	90	1.2
Leasowe & Moreton East	160	3.9	120	2.6	285	3.2
Liscard	235	4.8	130	2.6	365	3.7
Moreton West & Saughall Massie	100	2.5	60	1.3	160	1.9
New Brighton	175	3.7	90	2.0	265	2.8
Oxton	130	3.0	65	1.6	195	2.3
Pensby & Thingwall	50	1.4	45	1.2	95	1.3
Prenton	150	3.5	70	1.6	220	2.5
Rock Ferry	300	6.9	190	4.0	490	5.4
Seacombe	340	7.2	205	4.0	550	5.6
Upton	175	3.8	100	1.9	275	2.8
Wallasey	75	1.7	55	1.2	130	1.4
West Kirby & Thurstaston	60	1.7	35	0.9	90	1.3
Birkenhead Constituency	1,665	6.2	940	3.3	2,605	4.7
Wallasey Constituency	1,090	4.0	665	2.3	1,755	3.2
South Wirral Constituency	350	1.7	245	1.1	595	1.4
West Wirral Constituency	400	2.1	245	1.2	645	1.6
Wirral	3,510	3.7	2,090	2.1	5,595	2.9
North West	77,180	3.4	48,685	2.1	125,865	2.8
England	450,155	2.6	291,355	1.7	741,505	2.1

Notes and Definitions

1. Some totals may not exactly sum due to rounding (figures rounded to the nearest 5)
2. The Claimant Count measures the number of people claiming benefit principally for the reason of being unemployed. The Claimant Count includes all out of work Universal Credit claimants, as well as all Job Seeker's Allowance (JSA) claimants
3. Ideally only those Universal Credit claimants who are out of work and required to seek work *should* be included in the Claimant Count, but it is not currently possible to produce figures on this basis. The Claimant Count therefore currently includes some claimants of Universal Credit who are not required to look for work; for example, due to illness or disability. The Claimant Count also includes people who do not receive payment. For example, some claimants will have had their benefits stopped for a limited period of time by Jobcentre Plus and some people claim JSA in order to receive National Insurance Credits only

Source: [NOMIS](#)

SECTION 2: WIDER DETERMINANTS OF HEALTH

TABLE 2j

NUMBER OF EMPLOYMENT SUPPORT ALLOWANCE (ESA) & INCAPACITY/SEVERE DISABLEMENT ALLOWANCE CLAIMANTS BY CONDITION AND AREA, MAY 2017

Ward	Constituency	Mental conditions	Nervous system	Respiratory or Circulatory	Musculo-skeletal	Injury, poisoning	Other	Total
Bebington	Wirral South	285	40	20	55	40	155	595
Bidston & St James	Birkenhead	965	100	150	255	85	370	1,925
Birkenhead & Tranmere	Birkenhead	1,300	105	125	225	80	395	2,230
Bromborough	Wirral South	485	45	55	130	30	235	980
Clatterbridge	Wirral South	150	20	40	30	10	105	355
Cloughton	Birkenhead	470	50	55	100	35	210	920
Eastham	Wirral South	200	20	30	65	20	105	440
Greasby, Frankby & Irby	Wirral West	220	40	40	75	30	160	565
Heswall	Wirral South	115	50	15	25	25	55	285
Hoylake & Meols	Wirral West	215	40	20	30	20	95	420
Leasowe & Moreton East	Wallasey	585	65	85	160	30	250	1,175
Liscard	Wallasey	625	70	85	145	50	225	1,200
Moreton West & Saughall Massie	Wallasey	215	30	40	70	25	145	525
New Brighton	Wallasey	555	65	35	85	30	190	960
Oxton	Birkenhead	265	35	35	70	10	145	560
Pensby & Thingwall	Wirral West	95	15	25	45	10	65	255
Prenton	Birkenhead	220	40	40	75	20	90	485
Rock Ferry	Birkenhead	920	70	120	210	75	340	1,735
Seacombe	Wallasey	900	70	100	165	70	325	1,630
Upton	Wirral West	430	55	75	115	30	195	900
Wallasey	Wallasey	235	50	35	70	20	105	515
West Kirby & Thurstaston	Wirral West	105	15	20	20	15	60	235
Total	Wirral	9,555	1,090	1,245	2,220	760	4,020	18,890

Notes and Definitions

1. Table shows Employment & Support Allowance or ESA (which replaced Incapacity Benefit in January 2011), plus those still on Incapacity Benefit and Severe Disablement Allowance (due to not yet having been assessed and moved onto ESA)
2. These benefits are paid to people aged between 16-59/64 (ESA) or 16+ (IB/SDA) who cannot work due to illness and disability

Source: [NOMIS](#)

SECTION 2: WIDER DETERMINANTS OF HEALTH

TABLE 2k

HOUSEHOLDS WITH NO ACCESS TO A VEHICLE BY AREA, 2011

Area	No cars or vans in household	Percentage (%)
Bebington	1,385	20.9
Bidston & St James	3,561	51.0
Birkenhead & Tranmere	4,339	54.9
Bromborough	2,037	29.2
Clatterbridge	723	12.0
Claughton	1,609	26.2
Eastham	1,199	20.1
Greasby, Frankby & Irby	761	12.4
Heswall	608	10.3
Hoyle & Meols	1,034	18.1
Leasowe & Moreton East	2,021	31.6
Liscard	2,420	35.1
Moreton West & Saughall Massie	1,243	20.1
New Brighton	2,115	31.2
Oxton	1,458	22.1
Pensby & Thingwall	1,008	16.9
Prenton	1,457	24.6
Rock Ferry	3,275	47.0
Seacombe	3,156	45.9
Upton	2,243	32.0
Wallasey	1,226	19.4
West Kirby & Thurstaston	910	16.6
Birkenhead Constituency	15,494	38.7
Wallasey Constituency	12,181	30.9
Wirral South Constituency	5,806	18.7
Wirral West Constituency	5,910	19.6
Wirral	39,391	28.0
England	5,691,251	25.8

Notes and Definitions

1. This table shows the proportion of households who indicated in the 2011 Census, that their household had no access to a vehicle

Source: [Local Insight](#)

SECTION 2: WIDER DETERMINANTS OF HEALTH

TABLE 21

ANTI-SOCIAL BEHAVIOUR (ASB) BY AREA (NUMBER AND RATE), 2016 AND 2017

Area	2016		2017	
	ASB incidents	Rate per 1,000 population	ASB incidents	Rate per 1,000 population
Bebington	255	16.4	222	14.3
Bidston & St James	1,015	65.6	910	58.2
Birkenhead & Tranmere	1,400	85.4	1,296	78.4
Bromborough	657	42.4	582	37.6
Clatterbridge	96	6.7	71	5.0
Claughton	432	29.6	440	30.2
Eastham	254	18.0	168	11.8
Greasby, Frankby & Irby	414	29.8	397	28.7
Heswall	154	11.6	174	13.1
Hoylake & Meols	326	24.5	324	24.4
Leasowe & Moreton East	701	48.3	480	32.8
Liscard	735	46.8	569	36.2
Moreton West & Saughall Massie	308	22.2	278	19.9
New Brighton	491	33.1	424	28.4
Oxton	275	19.7	317	22.9
Pensby & Thingwall	70	5.4	77	5.9
Prenton	114	7.9	152	10.5
Rock Ferry	630	43.6	576	39.8
Seacombe	894	57.4	850	54.4
Upton	601	36.8	378	23.1
Wallasey	294	19.7	272	18.3
West Kirby & Thurstaston	105	8.3	115	9.2
Birkenhead Constituency	3,866	43.2	3,691	41.2
Wallasey Constituency	3,423	38.3	2,873	32.0
Wirral South Constituency	1,416	19.5	1,217	16.7
Wirral West Constituency	1,516	21.9	1,291	18.7
Wirral	10,221	31.9	9,072	28.2

Notes and Definitions

1. Numbers are for the calendar year of 2016 and 2017
2. Numbers are incidents of Anti-Social Behaviour (ASB) reported to Merseyside Police
3. Rates calculated using ONS 2016 mid-year population estimates as denominator (2017 mid-year estimates not available by ward at time of going to print)

Source: [Police UK](#)

SECTION 2: WIDER DETERMINANTS OF HEALTH

TABLE 2m

TREND IN DOMESTIC ABUSE RATES, BY AREA, 2010/11 - 2016/17

Year	Rate per 1,000		
	Merseyside	North West	England
2010/11	27.6	22.2	18.4
2011/12	28.8	21.1	18.0
2012/13	29.3	21.4	18.1
2013/14	28.4	21.4	19.4
2014/15	27.6	20.5	20.4
2015/16	26.2	23.5	22.1
2016/17	24.7	24.2	22.5

Notes and Definitions

- Domestic abuse is defined as any incident or pattern of incidents of controlling, coercive or threatening behaviour, violence or abuse between those aged 16 or over who are, or have been, intimate partners or family members. It can include psychological, physical, sexual, financial or emotional abuse (Home Office, 2013)
- Figures from 2015/16 include the new methodology which captures data relating to the new categories of all domestic abuse related crimes and domestic abuse related incidents. Figures from 2015/16 onwards are therefore not comparable with data released in previous years.
- Wirral specific figures are not available, therefore we report data for the larger area covered by Merseyside Police

Source: Public Health Outcomes Framework, [Public Health England \(PHE\)](#)

SECTION 2: WIDER DETERMINANTS OF HEALTH

TABLE 2n

TREND OF NEW DWELLINGS COMPLETED IN WIRRAL AND ENGLAND, 2011/12 - 2017/18

Period	Wirral		England Rate (%)
	Number	Rate (%)	
2011/12	170	0.1	0.5
2012/13	170	0.1	0.4
2013/14	200	0.1	0.4
2014/15	260	0.2	0.5
2015/16	150	0.1	0.6
2016/17	160	0.1	0.5
2017/18	390	0.3	0.6

Notes and Definitions

- This table shows the number of new dwellings (rounded to the nearest 10) and new dwellings as a percentage of all dwellings

Source: [LGInform](#)

SECTION 2: WIDER DETERMINANTS OF HEALTH

TABLE 2p

INDEX OF MULTIPLE DEPRIVATION BY AREA, 2015

Ward	Ward Ranking (Wirral)	Constituency	IMD 2015 Score (National)	Employment Score (%)	Income Score (%)
Birkenhead & Tranmere	1	Birkenhead	58.46	0.31	0.38
Bidston & St James	2	Birkenhead	58.31	0.34	0.42
Seacombe	3	Wallasey	52.98	0.30	0.36
Rock Ferry	4	Birkenhead	50.96	0.29	0.34
Leasowe & Moreton East	5	Wallasey	37.91	0.23	0.28
Claughton	6	Birkenhead	35.89	0.21	0.23
Liscard	7	Wallasey	34.22	0.19	0.23
Upton	8	Wirral West	32.17	0.20	0.23
New Brighton	9	Wallasey	28.93	0.18	0.19
Bromborough	10	Wirral South	28.03	0.17	0.18
Moreton West & Saughall Massie	11	Wallasey	22.11	0.14	0.15
Prenton	12	Birkenhead	21.31	0.14	0.14
Oxton	13	Birkenhead	18.66	0.13	0.13
Bebington	14	Wirral South	14.98	0.11	0.11
Eastham	15	Wirral South	14.78	0.11	0.11
Pensby & Thingwall	16	Wirral West	14.17	0.11	0.11
Wallasey	17	Wallasey	13.35	0.10	0.10
Hoyle & Meols	18	Wirral West	11.25	0.09	0.08
West Kirby & Thurstaston	19	Wirral West	10.43	0.08	0.08
Clatterbridge	20	Wirral South	10.13	0.09	0.07
Greasby, Frankby & Irby	21	Wirral West	8.02	0.08	0.07
Heswall	22	Wirral South	5.78	0.06	0.05
Wirral			26.89	0.19	0.17

Notes and Definitions

1. The Index of Multiple Deprivation (2015) is the most recent measure of deprivation in England
2. Wirral overall was ranked 66th of all local authorities in England on the 2015 IMD (1 is most deprived, 326 least deprived)
3. Ward Ranking (Wirral) shows Wirral wards ranked against each other (1 is most deprived, 22 is least deprived)
4. Income deprivation is a measure of the proportion of families on very low incomes, whether they are in or out of work. The scores in the Income and Employment Domains are actually from 0 to 1 and correspond to percentage rates. So for example, a score of 0.40 in Birkenhead & Tranmere indicates that 40% of residents in that ward are income deprived.
5. The English Indices of Deprivation (2015) are available at: <https://www.gov.uk/government/statistics/english-indices-of-deprivation-2015>
6. The IMD was last calculated (by the Department for Communities and Local Government) in 2015 and will next be updated in 2019

Source: Department for Communities and Local Government ([DCLG](#))

SECTION 2: WIDER DETERMINANTS OF HEALTH

TABLE 2q

ESTIMATED NUMBER OF HOUSEHOLDS IN FUEL POVERTY BY AREA, 2016

Area	Estimated number of households in fuel poverty	Estimated number of households in ward	Percentage of households in fuel poverty (%)
Bebington	752	6,835	11.0
Bidston & St James	1,517	7,383	20.5
Birkenhead & Tranmere	1,517	8,893	17.1
Bromborough	1,044	7,577	13.8
Clatterbridge	556	5,744	9.7
Claughton	743	6,745	11.0
Eastham	634	5,512	11.5
Greasby, Frankby & Irby	774	8,565	9.0
Heswall	672	7,285	9.2
Hoyle & Meols	678	7,067	9.6
Leasowe & Moreton East	1,033	6,729	15.4
Liscard	1,397	8,001	17.5
Moreton West & Saughall Massie	730	6,283	11.6
New Brighton	788	6,013	13.1
Oxton	610	6,256	9.8
Pensby & Thingwall	386	3,805	10.1
Prenton	578	4,610	12.5
Rock Ferry	1,306	7,952	16.4
Seacombe	1,388	7,120	19.5
Upton	805	6,057	13.3
Wallasey	689	6,665	10.3
West Kirby & Thurstaston	440	4,434	9.9
Birkenhead Constituency	6,271	41,839	15.0
Wallasey Constituency	6,025	40,811	14.8
Wirral South Constituency	3,658	32,953	11.1
Wirral West Constituency	3,083	29,928	10.3
Wirral	19,037	145,531	13.1
North West	399,344	3,117,298	12.8
England	2,550,565	22,996,229	11.1

Notes and Definitions

1. Ward-level data has been aggregated up from LSOA-level and may not be fully accurate
2. Household and fuel poverty numbers at region level come from the national fuel poverty statistics, 2016. These are also produced by the DBEIS
3. More detailed information on the methodology used to model fuel poverty rates is available on the DBEIS website at: <https://www.gov.uk/government/organisations/department-for-business-energy-and-industrial-strategy>

Source: Department for Business, Energy & Industrial Strategy ([DBEIS](#))

SECTION 2: WIDER DETERMINANTS OF HEALTH

TABLE 2r

PROPORTION OF PEOPLE AGED OVER 65 YEARS LIVING ALONE, BY AREA, 2011

Area	All Persons Aged 65+		
	Population	Numbers Living Alone	Percentage Living Alone
Bebington	3,171	1,085	34.2
Bidston & St James	2,048	834	40.7
Birkenhead & Tranmere	1,702	851	50.0
Bromborough	2,555	881	34.5
Clatterbridge	3,566	815	22.9
Claughton	2,826	813	28.8
Eastham	3,022	950	31.4
Greasby, Frankby & Irby	3,307	962	29.1
Heswall	3,848	1,049	27.3
Hoyle & Meols	2,991	985	32.9
Leasowe & Moreton East	2,418	910	37.6
Liscard	2,621	934	35.6
Moreton West & Saughall Massie	2,641	912	34.5
New Brighton	2,603	1,032	39.6
Oxton	2,742	932	34.0
Pensby & Thingwall	3,374	1,107	32.8
Prenton	2,691	830	30.8
Rock Ferry	2,019	795	39.4
Seacombe	1,935	783	40.5
Upton	3,174	1,160	36.5
Wallasey	3,042	1,001	32.9
West Kirby & Thurstaston	3,131	1,000	31.9
Birkenhead Constituency	14,028	5,055	36.0
Wallasey Constituency	15,260	5,572	36.5
South Wirral Constituency	16,162	4,780	29.6
West Wirral Constituency	15,977	5,214	32.6
Wirral	61,427	20,621	33.6
North West	1,252,600	386,650	30.9
England	9,305,200	2,725,596	29.3

Notes and Definitions

1. Living alone is defined as households which consist of one person living alone, or a group of people (not related) living at the same address sharing cooking facilities and a living room, sitting room or dining area
2. A household must contain at least one person whose place of usual residence is at the address. A group of short-term residents living together is not classified as a household, neither is a group of people at an address where only visitors are staying

Source: Census, 2011 (via [ONS](#))

SECTION 3: HEALTH IMPROVEMENT

TABLE 3a

TRENDS IN BREASTFEEDING INITIATION AND 6-8 WEEKS RATES, BY AREA,
2008/09 - 2016/17

Year	Wirral		North West		England	
	Initiation (%)	6-8 weeks (%)	Initiation (%)	6-8 weeks (%)	Initiation (%)	6-8 weeks (%)
2008/09	53.3	28.0	61.8	*	71.7	*
2009/10	56.9	30.4	63.0	32.5	72.7	44.7
2010/11	55.5	29.9	63.4	34.0	73.7	46.1
2011/12	55.6	30.2	62.0	34.1	74.0	47.2
2012/13	56.7	31.0	62.3	33.0	73.9	47.2
2013/14	*	31.0	64.5	*	74.0	45.8
2014/15	55.6	31.0	64.6	*	74.3	43.8
2015/16	58.9	32.8	64.2	*	74.0	43.2
2016/17	59.4	33.9	64.5	*	74.5	44.4

Notes and Definitions

1. Breastfeeding initiation is defined as a mother giving any breast milk (including expressed milk) in the first 48 hours after birth
2. Breastfeeding at 6-8 weeks is defined as the percentage of infants that are totally or partially breastfed at age 6-8 weeks. Totally breastfed is defined as infants who are exclusively receiving breast milk at 6-8 weeks of age - that is, they are not receiving formula milk or any other liquids or food. Partially breastfed is defined as infants who are currently receiving breast milk at 6-8 weeks of age and who are also receiving formula milk or any other liquids or food
3. Some figures are missing for Wirral, North West and England. This is due to incomplete data
4. Due to changes in the methodology, figures for breastfeeding at 6-8 weeks from 2015/16 onwards cannot be compared with previous years. For further details, please see <http://www.phoutcomes.info/>

Source: Public Health Outcomes Framework, [Public Health England \(PHE\)](#)

SECTION 3: HEALTH IMPROVEMENT

TABLE 3b

TREND IN MATERNAL SMOKING AT THE TIME OF DELIVERY, BY AREA,
2010/11 - 2016/17

Year	Wirral (%)	North West (%)	England (%)
2010/11	14.6	17.8	13.6
2011/12	13.2	17.1	13.3
2012/13	12.0	16.5	12.8
2013/14	*15.7	15.5	12.2
2014/15	*13.9	14.8	11.7
2015/16	*12.4	13.8	11.0
2016/17	*12.0	13.4	10.7

Notes and Definitions

1. Asterisk in table (*) indicates that there is a data quality issue with this value
2. Figures show the number of women who smoked at time of delivery per 100 maternities (%)
3. Due to changes in methodology, these figures cannot be compared to those published in previous versions of the Compendium

Source: Public Health Outcomes Framework, [Public Health England \(PHE\)](#)

SECTION 3: HEALTH IMPROVEMENT

TABLE 3c

TREND IN HOSPITAL TOOTH EXTRACTIONS DUE TO DECAY FOR CHILDREN, AGED 10 YEARS AND UNDER, RATE PER 100,000, BY AREA, 2011/12 - 2016/17

Year	Wirral			North West			England		
	Rate	Lower 95% CI	Higher 95% CI	Rate	Lower 95% CI	Higher 95% CI	Rate	Lower 95% CI	Higher 95% CI
2011/12	40.2	23.0	65.2	777.6	759.5	796.0	445.7	440.7	450.7
2012/13	39.4	22.5	64.0	738.7	721.2	756.4	443.7	438.8	448.7
2013/14	83.1	57.5	116.1	757.1	739.6	775.0	455.5	450.6	460.5
2014/15	79.5	54.7	111.6	703.8	687.0	720.9	462.2	457.3	467.1
2015/16	64.7	42.6	94.1	621.2	605.6	637.2	425.0	420.3	429.7
2016/17	97.4	69.9	132.1	651.2	635.3	667.5	421.7	417.1	426.4

Notes and Definitions

1. Wirral figures include children who reside in Wirral but may have had extractions in hospitals outside of the area e.g. Alder Hey Children's Hospital NHS Foundation Trust
2. 95% Confidence Intervals (CIs) indicate the range within which the true value of the indicator has a 95% chance of falling. For example, a 95% CI of 69.9 to 132.1 (for Wirral) means that we can be 95% certain the true value lies somewhere between these two values
3. Confidence Intervals are much wider with small sample sizes, hence the difference in the upper and lower limits between Wirral and England

Source: [NHS Outcomes Framework](#)

SECTION 3: HEALTH IMPROVEMENT

TABLE 3d

WEIGHT STATUS OF PRIMARY SCHOOL CHILDREN (AGED 4/5 AND 10/11) BY AREA, 2016/17

Area	Reception Year (aged 4/5)					Year 6 (aged 10/11)				
	% with height and weight recorded	% under-weight	% healthy weight	% over-weight	% obese	% with height and weight recorded	% under-weight	% healthy weight	% over-weight	% obese
Wirral	97.9	0.5	73.9	14.9	10.8	97.2	0.6	64.1	14.7	20.6
North West	95.7	0.9	75.3	13.6	10.3	94.0	1.3	63.5	14.4	20.8
England	95.8	1.0	76.4	13.0	9.6	94.2	1.3	64.4	14.3	20.0

Notes and Definitions

1. These figures are Public Health Outcomes Framework Indicators 2.6i and 2.6ii
2. Figures based on the percentage of primary school age children in their Reception Year (aged 4/5 years) and Year 6 (aged 10/11 years) in the school year 2016/17
3. [NICE guidelines](#) define children as overweight if their Body Mass Index (BMI) is more than, or equal to the 85th percentile but less than the 95th percentile. Children with a BMI over the 95th percentile are defined as obese (this means that they are heavier than 95% of other children of the same height, age and gender)
4. Figures may not sum due to rounding

Source: National Child Measurement Programme (NCMP), [Public Health England \(PHE\)](#)

SECTION 3: HEALTH IMPROVEMENT

TABLE 3e

ESTIMATED PREVALENCE OF OVERWEIGHT AND OBESITY AMONG ADULTS, BY AREA, 2013-16 (3 YEARS POOLED)

Area	% Overweight	% Obese	% Total Excess Weight
Wirral	44.4	21.8	66.2
North West	41.1	25.0	66.1
England	40.6	24.0	64.6

Notes and Definitions

1. The data covers the period from mid-January 2013 to mid-January 2016
2. Overweight: Body Mass Index (BMI) greater than or equal to 25kg/m² but less than 30kg/m². Obese: BMI greater than or equal to 30kg/m².
3. The data is based on an average sample of 2,941 Wirral adults aged 16+ years, sampled by the Active People's Survey. (NB: Average sample size of 1,371 is for lower tier local authorities).

Source: [Active People Survey, Sport England](#)

SECTION 3: HEALTH IMPROVEMENT

TABLE 3f

PROPORTION OF SMOKERS SUCCESSFULLY QUITTING AFTER FOUR WEEKS, WIRRAL, 2000/01 - 2016/17

Year	Numbers of Quit Dates Set	Numbers of Clients Still Quit After 4 Weeks	Quit Rate %
2000/01	791	507	64.1
2001/02	909	497	54.7
2002/03	3,688	1,709	46.3
2003/04	4,507	1,991	44.2
2004/05	5,506	2,533	46.0
2005/06	5,637	2,383	42.3
2006/07	5,675	2,203	38.8
2007/08	6,087	2,188	35.9
2008/09	5,271	2,359	44.8
2009/10	6,624	2,812	42.5
2010/11	8,738	3,101	35.5
2011/12	8,121	3,377	42.0
2012/13	5,268	2,183	41.4
2013/14	3,982	1,727	43.4
2014/15	3,470	1,371	39.5
2015/16	2,777	1,382	49.8
2016/17	2,253	1,195	53.0

Notes and Definitions

1. A client is counted as having successfully quit smoking at the 4 week follow up if he/she has not smoked at all during the 4 weeks following the quit date. This is based on self-reported smoking status by clients; a proportion of quits are also confirmed with Carbon Monoxide readings
2. Figures are calculated as a proportion of clients who have set a quit date whilst in treatment services
3. Figures presented here are quit attempts, not clients. Clients may attempt to stop smoking several times during any given year and so may be counted more than once

Source: [NHS Digital](#)

SECTION 3: HEALTH IMPROVEMENT

TABLE 3g

INDICATORS OF ALCOHOL-RELATED HARM, BY AREA, 2016-17

Time range	Indicator	Number	Rate per 100,000		
		Wirral	Wirral	North West	England
2016	Years of life lost (males)	1,601	1,165	1,130	901
	Years of life lost (females)	870	584	477	350
2016	Alcohol related mortality (males)	130	87.9	78.0	66.3
	Alcohol related mortality (females)	78	42.3	34.8	28.8
2016/17	Admission episodes for alcohol specific conditions (males)	2,409	1,581	1,159	784
	Admission episodes for alcohol specific conditions (males)	1,304	798	542	355

Notes and Definitions

1. Due to changes in the Local Alcohol Profiles for England, indicators included in previous versions of this compendium may have been removed and/or changed
2. Rates for all indicators are a directly age standardised rate per 100,000 population
3. Mortality figures are recorded by calendar years whereas hospital admission figures are recorded by financial year. This therefore explains why some years are shown as 2016 and others as 2016/17

Source: Local Alcohol Profiles for England, [Public Health England \(PHE\)](#)

SECTION 3: HEALTH IMPROVEMENT

TABLE 3h

ALCOHOL-RELATED A&E ATTENDANCES, WIRRAL, 2014/15 - 2016/17
(3 YEARS POOLED)

Wirral	Alcohol-related assault	Alcohol-related deliberate self-harm	All alcohol-related injury
Number	1,320	477	5,306
Rate per 1,000	1.4	0.5	5.5

Notes and Definitions

1. This data relates to alcohol-related Accident and Emergency (A&E) attendances where injury was sustained between April 2014 and March 2017
2. The rate has been calculated using ONS mid-2016 population estimates as a rate per 1,000 people aged 18+

Source: Trauma & Injury Intelligence Group ([TIIG](#)), Liverpool John Moores University

SECTION 3: HEALTH IMPROVEMENT

TABLE 3i

TREND IN SUCCESSFUL COMPLETIONS OF DRUG AND ALCOHOL TREATMENT, BY AREA, 2010 TO 2016

Year	Wirral			North West			England		
	Opiates	Non-opiates	Alcohol	Opiates	Non-opiates	Alcohol	Opiates	Non-opiates	Alcohol
2010	7.8%	44.0%	38.2%	6.3%	38.8%	29.8%	6.7%	34.4%	31.4%
2011	9.8%	42.6%	48.1%	7.7%	39.0%	33.0%	8.6%	36.6%	34.8%
2012	9.1%	48.3%	43.7%	7.6%	43.8%	38.7%	8.2%	37.7%	37.1%
2013	7.3%	52.8%	48.1%	7.8%	41.1%	41.1%	7.8%	37.7%	37.5%
2014	9.3%	51.0%	52.4%	8.4%	44.7%	44.4%	7.4%	39.2%	38.4%
2015	5.5%	32.8%	34.1%	7.6%	43.2%	43.2%	6.7%	37.3%	38.4%
2016	6.3%	35.2%	36.7%	7.0%	42.6%	43.6%	6.7%	37.1%	38.7%

Notes and Definitions

1. All percentages show clients who successfully left drug or alcohol treatment and did not then re-present to treatment within 6 months as a percentage of the total number of drug or alcohol users in the treatment
2. All figures relate to populations aged 18-75 years

Source: Public Health Outcomes Framework, [Public Health England \(PHE\)](#)

SECTION 3: HEALTH IMPROVEMENT

TABLE 3j

SELF-REPORTED WELLBEING, BY AREA, 2016/17

Life Satisfaction: Overall, how satisfied are you with your life nowadays?

Area	Proportion of people scoring each category (%)			
	Low (0-4)	Medium (5-6)	High (7-8)	Very High (9-10)
Wirral	5.5	16.6	49.8	28.1
North West	5.4	14.9	50.9	28.8
England	4.5	13.9	51.9	29.8

Worthwhile: Overall, to what extent do you feel the things you do in your life are worthwhile?

Area	Proportion of people scoring each category (%)			
	Low (0-4)	Medium (5-6)	High (7-8)	Very High (9-10)
Wirral	4.1	12.7	49.7	33.5
North West	4.2	12.8	47.6	35.4
England	3.6	12.4	48.9	35.2

Happiness: Overall, how happy did you feel yesterday?

Area	Proportion of people scoring each category (%)			
	Low (0-4)	Medium (5-6)	High (7-8)	Very High (9-10)
Wirral	9.5	18.4	40.3	31.8
North West	9.7	16.6	39.6	34.1
England	8.5	16.3	40.4	34.8

Anxiety: Overall, how anxious did you feel yesterday?

Area	Proportion of people scoring each category (%)			
	Very Low (0-4)	Low (5-6)	Medium (7-8)	High (9-10)
Wirral	40.4	24.7	14.4	20.4
North West	40.6	22.7	16.0	20.8
England	39.9	23.5	16.8	19.9

Notes and Definitions

1. This data is from the Annual Population Survey (ONS)
2. All estimates are weighted (please see ONS website for full details: www.ons.gov.uk)
3. Estimates may not add to 100% due to rounding

Source: Office for National Statistics ([ONS](http://www.ons.gov.uk))

SECTION 3: HEALTH IMPROVEMENT

TABLE 3k

RATE OF ANTI-DEPRESSANT MEDICATION PRESCRIBED, BY AREA, 2014/15 - 2017/18

Year	Prescribed item per 1,000 STAR PUs		
	Wirral	North of England	England
2014/15	1,788	1,507	1,266
2015/16	1,945	1,621	1,355
2016/17	2,108	1,732	1,444
2017/18	2,215	1,811	1,507

Notes and Definitions

1. Specific Therapeutic group Age-sex Related Prescribing Units (STAR PUs) are weighted measures of prescribed items that take into account age and gender. More detailed information can be found on www.nhsbsa.nhs.uk
2. This table shows us that Wirral prescribes a higher rate of anti-depressant medication per head of the population than the North of England and England average
3. See table 5h for more information on the prevalence of depression in Wirral over a person's lifetime and within the past year.
4. For more information about which North of England CCG's and acute trusts produce these figures then please visit: <https://www.england.nhs.uk/north/ccg-trust/>

Source: NHS Business Services Authority ([NHSBSA](http://www.nhsbsa.nhs.uk))

SECTION 4: HEALTH PROTECTION AND SEXUAL HEALTH

TABLE 4a

UPTAKE OF CHILDHOOD IMMUNISATIONS BY AREA, 2015/16 AND 2016/17

Immunisation	2015/16			2016/17		
	Wirral CCG	North West	England	Wirral CCG	North West	England
DTaP/IPV/Hib (Diphtheria, Tetanus, Pertussis, Polio, Haemophilus Influenza B)	97.5	95.5	95.2	97.6	96.4	95.1
Meningitis C / Hib Booster	94.9	92.6	91.6	95.1	93.5	91.5
Pneumococcal (PCV) %	94.6	92.2	91.5	95.0	93.3	91.5
MMR 1 dose %	95.1	92.9	91.9	95.2	93.6	91.6
MMR 2 doses %	93.1	89.4	88.2	93.9	90.3	87.6
HPV (1 dose) %	88.2	88.2	87.0	91.3	88.5	87.2
HPV (2 doses) %	91.7	87.8	85.1	86.0	84.9	83.1

Notes and Definitions

1. All of the above immunisations, with the exception of HPV (Human Papillomavirus), relates to children immunised by the age of two. The HPV vaccination is offered to girls aged 12-13 years old
2. Children are routinely scheduled for their primary immunisations against each of the following diseases: Diphtheria, Tetanus, Pertussis (Whooping Cough), Polio, Haemophilus Influenza B (Hib). These are given in a series of immunisations from the age of 2 months. A single dose of MMR (Measles, Mumps and Rubella) is offered from 13 months of age with a second one available any time until a child's 5th birthday
3. The PCV vaccine protects against pneumococcal infections that can cause pneumonia, septicaemia or meningitis. A child can receive this vaccine any time before their 1st birthday
4. Immunisation rates are a combined figure for Diphtheria, Tetanus, Polio, Pertussis, and Hib. Figures for individual vaccinations are not available
5. Information relates to all those registered with a GP whose practice forms part of the CCG (Clinical Commissioning Group) regardless of where that person is resident, plus any people not registered with a GP but who are resident within the geographic boundary of the CCG
6. Please see the [Routine Immunisation Schedule](#) for the UK for a full breakdown of childhood immunisations

Source: Public Health Outcomes Framework, [Public Health England \(PHE\)](#)

SECTION 4: HEALTH PROTECTION AND SEXUAL HEALTH

TABLE 4b

TREND IN TEENAGE CONCEPTIONS, BY AREA, 1999-2001 TO 2014-2016

Time Period	Wirral Under 18 Conceptions		North West (Conception Rate per 1,000)	England (Conception Rate per 1,000)
	Number of Conceptions	Conception Rate Per 1,000		
1999-01	916	46.9	47.1	42.5
2000-02	935	47.3	46.0	43.0
2001-03	906	45.5	45.2	42.5
2002-04	880	44.1	45.5	42.2
2003-05	879	44.0	46.0	41.7
2004-06	911	45.4	45.7	41.2
2005-07	918	46.9	45.9	41.1
2006-08	865	45.1	45.2	40.6
2007-09	817	43.9	44.7	39.4
2008-10	789	42.2	42.3	37.0
2009-11	746	40.9	39.2	34.0
2010-12	677	37.9	35.5	30.9
2011-13	594	33.9	31.5	27.6
2012-14	564	32.7	28.7	25.0
2013-15	514	30.3	29.8	25.5
2014-16	465	27.6	24.6	20.8

Notes and Definitions

1. The under 18 conception rate is a rate per 1,000 women aged 15-17 years of age
2. The numerator includes any conceptions in under 18s (including any of those aged under 15) while the denominator is just 15-17 year olds.
3. Data presented is for 3 pooled years to smooth out the random year-on-year variations which can characterise small datasets such as under 18 conceptions

Source: Office for National Statistic ([ONS](#))

SECTION 4: HEALTH PROTECTION AND SEXUAL HEALTH

TABLE 4ci

LEGAL ABORTION RATES BY AGE GROUP, BY AREA, 2016

Area	Abortion Rate per 1,000 Women Aged:							Number of Abortions
	Under 18	18-19	20-24	25-29	30-34	35+	All Ages	
Wirral	12.2	34.9	37.8	33.1	20.9	9.2	21.2	1,187
North West	10.6	26.6	30.3	27.7	19.6	8.1	18.0	25,624
England	8.9	23.2	27.2	23.7	17.5	8.2	16.1	177,350

TABLE 4cii

LEGAL ABORTION RATES BY AGE GROUP, BY AREA 2017

Area	Abortion Rate per 1,000 Women Aged:							Number of Abortions
	Under 18	18-19	20-24	25-29	30-34	35+	All Ages	
Wirral	12.4	43.6	41.8	32.1	22.0	9.7	22.5	1,236
North West	10.1	27.0	31.9	28.2	20.4	8.6	18.6	26,430
England	8.2	23.3	28.1	24.1	18.2	8.5	17.0	181,281

Notes and Definitions

1. This table summarises information from the abortion notification forms returned to the Chief Medical Officers of England and Wales in respect of abortions carried out in 2016 and 2017
2. Abortion rates for individual age groups are per 1,000 women in that age group. The figure for all ages is expressed as an age-standardised rate per 1,000 women aged 15-44 years

Source: [Department of Health](#)

SECTION 4: HEALTH PROTECTION AND SEXUAL HEALTH

TABLE 4d

TRENDS IN PREVALENCE OF DIAGNOSED HIV AND AIDS, WIRRAL, 2011 TO 2016

Year	Number	Prevalence Rate (per 1,000)
2011	151	0.83
2012	155	0.86
2013	158	0.88
2014	190	1.06
2015	198	1.11
2016	193	1.09

Notes and Definitions

1. Number refers to the total number of cases aged 15-59 years seen at HIV services in a given year, including those who died during that year
2. Prevalence is expressed as a crude rate per 1,000 population and has not been adjusted to take account of differences in the age structure of the population (age standardised). In previous years the prevalence was calculated using the total population, from 2010 it is calculated on just those aged 15-59 years, this is in line with Public Health England (PHE) guidance
3. 'High prevalence' of HIV/AIDS is 2-5 diagnosed infections per 1,000 aged 15-59 years, and 'extremely high prevalence' is 5 or more diagnosed infections per 1,000 people aged 15-59 years. Wirral does not fall into either of these categories
4. 2015 rates calculated using ONS 2015 mid-year population estimates as a denominator

Source: *Sexual and Reproductive Health Profile*, [Public Health England \(PHE\)](#)

SECTION 4: HEALTH PROTECTION AND SEXUAL HEALTH

TABLE 4e

COVERAGE OF NHS CERVICAL SCREENING PROGRAMME: WOMEN AGED 25-49 AND 50-64, BY AREA, 2012/13 - 2016/17

Area	Coverage Rate (%)									
	2012/13		2013/14		2014/15		2015/16		2016/17	
	25-49	50-64	25-49	50-64	25-49	50-64	25-49	50-64	25-49	50-64
Wirral	70.6	74.4	71.0	76.4	72.3	75.7	71.9	75.1	71.8	74.4
North West	71.1	76.1	70.8	77.8	70.8	77.0	70.2	76.6	70.1	76.0
England	71.5	77.5	71.8	79.4	71.2	78.4	70.2	78.0	69.6	77.2

Notes and Definitions

1. The National Cervical Screening Programme target is for 80% of eligible women aged 25-64 to be screened at least once every 3.5 years (25-49) and once every 5.5 years (50-64)
2. Coverage is defined as the percentage of women in a population who were eligible for screening at a given point in time, who were screened adequately within a specified period.
3. Women are eligible for screening if they are in the screening age range and are not ineligible because their recall has been ceased for clinical reasons (most commonly due to hysterectomy)
4. Coverage is calculated as the number of women in this age group who have had an adequate screening test within the last 3.5/5.5 years as a percentage of the eligible population aged 25-64 years
5. Age bands are shown separately, as there are large differences in coverage rates between the age bands
6. NHS Digital retrospectively updates figures from previous years from time to time. The table above reflects these updates. The figures may differ from those quoted in previous compendiums

Source: [NHS Digital](#)

SECTION 4: HEALTH PROTECTION AND SEXUAL HEALTH

TABLE 4f

COVERAGE OF NHS BREAST CANCER SCREENING PROGRAMME: WOMEN AGED 53-70, BY AREA, 2012/13 - 2016/17

Area	Coverage Rate %				
	2012/13	2013/14	2014/15	2015/16	2016/17
Wirral	77.7	77.3	76.9	76.8	77.1
North West	74.7	72.7	71.9	71.5	72.5
England	77.0	75.9	75.4	75.5	75.4

Notes and Definitions

1. The National Breast Screening Programme has the aim of screening 70% of eligible women aged 53-70 at least once every 3 years
2. The coverage rate is the percentage of women in the population who are eligible for screening at a particular point in time (31 March 2017 in this instance), who have had a test with a recorded result at least once within the screening round, i.e. in the previous three years. Currently coverage is best assessed using the 53-70 age group
3. Women are eligible for screening if they are in the screening age range and are not ineligible due to bilateral mastectomy
4. NHS Digital retrospectively updates figures from previous years. The table above reflects these updates. The figures may differ from those quoted in previous compendiums

Source: [NHS Digital](#)

SECTION 4: HEALTH PROTECTION & SEXUAL HEALTH

TABLE 4g

UPTAKE OF VACCINATIONS IN OLDER PEOPLE BY AREA, 2015/16 AND 2016/17

Vaccination	2015/16			2016/17		
	Wirral	North West	England	Wirral	North West	England
Flu Vaccine Uptake % (65+)	73.6	73.7	71.0	73.6	72.9	70.5
PPV Uptake % (65+)	72.2	71.7	70.1	71.9	71.4	69.8
Shingles Uptake % (70+)	59.2	55.5	54.9	44.8	48.2	48.3

Notes and Definitions

1. The influenza vaccination programme covers people aged 65+ or adults in clinical risk groups (e.g. those with respiratory conditions such as Chronic Obstructive Pulmonary Disease or COPD). Uptake data of influenza vaccinations is collected by the Public Health England (PHE) on behalf of the Department of Health
2. The target for flu vaccination is for 75% of at risk groups and all those aged over 65 to be vaccinated. There is no target for pneumococcal polysaccharide vaccine (PPV) uptake; PHE suggest performance should be compared with England and previous years

Source: *Public Health Outcomes Framework* [Public Health England \(PHE\)](#)

SECTION 5: MORBIDITY, DISABILITY AND HEALTHCARE

TABLE 5a

TRENDS IN LOW BIRTH WEIGHT BABIES, WITH 95% CONFIDENCE LIMITS,
WIRRAL AND ENGLAND, 2001 TO 2016

Year	Wirral				England			
	Total Number of Births <2500g	% Of All Births	95% Confidence Intervals		Total Number of Births <2500g	% Of All Births	95% Confidence Intervals	
			Lower Limit	Upper Limit			Lower Limit	Upper Limit
2001	237	7.1	6.3	8.1	45,083	7.9	7.9	8.0
2002	226	6.9	6.1	7.8	45,918	7.9	7.8	7.9
2003	281	8.0	7.1	8.9	47,576	8.0	7.9	8.1
2004	230	6.5	5.8	7.4	48,594	7.9	7.9	8.0
2005	252	7.0	6.2	7.9	51,046	7.9	7.8	8.0
2006	269	7.5	6.7	8.4	52,487	7.9	7.8	7.9
2007	276	7.4	6.6	8.3	51,577	7.5	7.5	7.6
2008	284	7.5	6.7	8.4	52,954	7.5	7.4	7.6
2009	194	5.3	4.5	6.1	50,289	7.1	7.1	7.2
2010	253	6.7	5.9	7.5	50,035	7.3	7.3	7.4
2011	254	6.6	5.9	7.5	50,726	7.4	7.3	7.5
2012	233	6.1	5.4	6.9	50,516	7.3	7.2	7.4
2013	281	7.9	7.0	8.8	48,657	7.4	7.3	7.4
2014	254	7.2	6.3	8.0	48,284	7.4	7.3	7.4
2015	261	7.3	6.5	8.2	48,442	7.4	7.3	7.4
2016	293	8.5	7.6	9.5	48,112	7.3	7.3	7.4

Notes and Definitions

1. Low birth weight babies defined as live and stillborn infants with a stated birth weight of less than 2,500 grams (approximately 5lb 8oz). Numbers exclude births with no weight recorded
2. Confidence Intervals (CIs) indicate the range within which the true value of the indicator has a 95% chance of falling. For example, the 95% CIs around the 7.3% of low birth weight babies in Wirral in 2015 were 6.5 to 8.2. This means that we are 95% certain that the real value lies somewhere between these two values
3. Confidence Intervals are much wider with small sample sizes, hence the difference in the upper and lower limits between Wirral and England

Source: Public Health Outcomes Framework [Public Health England \(PHE\)](#)

SECTION 5: MORBIDITY, DISABILITY AND HEALTHCARE

TABLE 5b

A&E ATTENDANCES FOR UNINTENTIONAL INJURIES IN CHILDREN AGED 0-4, BY INJURY TYPE, WIRRAL, 2014/15 - 2017/18

Injury	2014/15		2015/16		2016/17		2017/18	
	Number	%	Number	%	Number	%	Number	%
Bite	24	0.9	21	0.7	19	0.7	28	0.9
Burn/scald	80	2.9	81	2.7	66	2.5	90	3.0
Fall	1,395	49.8	1,270	42.9	1,152	43.2	1,346	45.1
Ingestion	99	3.5	83	2.8	56	2.1	94	3.2
Road Traffic Accident (RTA)	72	2.6	116	3.9	119	4.5	94	3.2
Struck	289	10.3	342	11.6	299	11.2	415	13.9
Wound/cut	216	7.7	235	7.9	235	8.8	239	8.0
Other	623	22.3	810	27.4	721	27.0	677	22.7
Total	2,800	100.0	2,958	100.0	2,667	100.0	2,983	100.0

Notes and Definitions

1. The table shows injury groups of trauma attendances for 0 to 4 year old children who attended Arrowe Park Accident and Emergency department over 4 financial years
2. The 'Struck' category does not necessarily mean struck by another child/person, it could for example, include being struck by an object
3. Figures are Arrowe Park A&E attendances not admissions (which are a much smaller figure). Children can have more than 1 attendance for the same injury type in a given year which means these children would be double counted to produce these figures
4. Due to small numbers the category of 'Inhalation' has been included within 'Other' to avoid suppression of figures

Source: Trauma & Injury Intelligence Group ([TIIG](#)), Centre for Public Health, Liverpool John Moores University

SECTION 5: MORBIDITY, DISABILITY AND HEALTHCARE

TABLE 5c

NUMBER OF CHILDREN WITH SPECIAL EDUCATIONAL NEEDS KNOWN TO SCHOOLS, BY AREA, 2015 TO 2017

Year	Wirral (Number)	Wirral (%)	North West (%)	England (%)
2015	9,004	17.7	15.6	15.4
2016	8,578	16.8	14.4	14.4
2017	8,858	17.1	14.4	14.4

Notes and Definitions

1. The values shown are the number of SEN pupils as a percentage of all pupils in all schools
2. Due to availability of data, this indicator is not comparable with those published in previous versions of the compendium
3. Figures are recorded in January of each year

Source: [Department for Education \(DfE\)](#)

SECTION 5: MORBIDITY, DISABILITY AND HEALTHCARE

TABLE 5d

NUMBER OF PEOPLE WITH A LEARNING DISABILITY KNOWN TO GPs, BY AREA, 2014/15 - 2016/17

Year	Wirral (Number)	Rate per 1,000		
		Wirral	North West	England
2014/15	1,909	5.7	4.6	4.4
2015/16	2,121	6.3	5.1	4.6
2016/17	2,213	6.4	5.3	4.7

Notes and Definitions

1. The indicator previously recorded adults (aged 18-64) with a learning disability known to GPs. In 2014/15 the scope of this indicator was widened to all ages and so the results from 2014/15 onwards are not comparable with previous years
2. The value is the rate per 1,000 patients on GP register list

Source: [NHS Digital](#)

SECTION 5: MORBIDITY, DISABILITY AND HEALTHCARE

TABLE 5e

CARERS BY WIRRAL CONSTITUENCY, AS AT JUNE 2018

Area	Estimated number of Carers (Census, 2011)	Carers known to Wirral Council Department of Adult Social Services (DASS) (Jun-2018)	Claimants of Carer Allowance (Nov-2017)
Birkenhead	9,344	1,256	2,428
Wallasey	9,538	1,358	2,029
Wirral South	11,127	1,053	919
Wirral West	10,331	1,064	912
Wirral	40,340	4,731	6,284

Notes and Definitions

1. As carers do not always access services and/or not claim Carer Allowance, it is difficult to produce a definitive number of carers in Wirral
2. The Census 2011 figures are people who said that they provided any unpaid care (between 1-50 hours per week)
3. The figure of carers known to DASS reflects improvements in data quality over previously reported figures
4. Figures for Carer's Allowance may not sum due to rounding

Source: Department of Adult Social Services (Wirral Council), Department of Work & Pensions ([DWP](#)), and Census 2011 ([ONS](#))

SECTION 5: MORBIDITY, DISABILITY AND HEALTHCARE

TABLE 5f

ROAD COLLISION CASUALTIES, BY AREA, 2015-17 (3 YEARS POOLED)

Area of Collision	Total Number of Casualties	% Killed or Seriously Injured	% Killed or Seriously Injured (Child)
Bebington	82	29.3	1.2
Bidston & St James	155	15.5	1.3
Birkenhead & Tranmere	191	20.9	2.1
Bromborough	124	14.5	0.8
Cloughton	99	18.2	1.0
Clatterbridge	67	13.4	3.0
Eastham	93	18.3	1.1
Greasby, Frankby & Irby	46	10.9	2.2
Heswall	42	31.0	0.0
Hoylake & Meols	66	27.3	1.5
Leasowe & Moreton East	76	21.1	1.3
Liscard	95	16.8	5.3
Moreton West & Saughall Massie	52	13.5	1.9
New Brighton	49	12.2	4.1
Oxton	63	27.0	1.6
Pensby & Thingwall	65	29.2	0.0
Prenton	78	23.1	2.6
Rock Ferry	105	20.0	1.9
Seacombe	111	20.7	1.8
Upton	92	20.7	1.1
Wallasey	51	21.6	2.0
West Kirby & Thurstaston	66	27.3	3.0
Birkenhead Constituency	659	19.6	2.0
Wallasey Constituency	434	18.2	2.8
Wirral South Constituency	440	20.5	0.9
Wirral West Constituency	335	23.6	1.5
Wirral	1,868	20.2	1.8

Notes and Definitions

1. The data in this table is based on the information collected by Merseyside Police at the scene of the collision using the STATS-19 form. This is used to record the details of the incident and the circumstances surrounding it
2. Data is based on the location of the collision, rather than the usual place of residence of the collision victim
3. Data presented is for 3 pooled years to smooth out the random year-on-year variations which can characterise small datasets

Source: Wirral Accident Investigation Unit, Wirral Council

SECTION 5: MORBIDITY, DISABILITY AND HEALTHCARE

TABLE 5g

INCIDENCE OF MOST COMMON CANCERS IN WIRRAL BY GENDER, WITH 95% CONFIDENCE LIMITS, WIRRAL, 2015

Cancer Type	Male				Female			
	Number	ASR	LCI	UCI	Number	ASR	LCI	UCI
Breast Cancer	*	*	*	*	332	184.5	165.0	205.7
Prostate Cancer	250	162.8	143.1	184.4	-	-	-	-
Cancer of the Trachea, Bronchus and Lung	153	102.7	87.0	120.4	187	100.3	86.3	116.0
Colorectal Cancer	151	101.3	85.8	119.0	118	62.9	52.0	75.7
Oesophageal Cancer	58	38.2	29.0	49.5	25	12.9	8.3	19.3
Kidney Cancer (not including Renal Pelvis)	49	32.0	23.7	42.4	28	15.5	10.3	22.6
Bladder Cancer	43	29.0	21.0	39.2	21	11.6	7.2	18.0
Skin Cancer	43	28.6	20.7	38.6	49	27.5	20.3	36.6
Uterine Cancer	-	-	-	-	51	28.6	21.3	37.8
Ovarian Cancer (including cancer of the fallopian tube(s))	-	-	-	-	48	26.8	19.7	35.7
Pancreatic Cancer	39	25.7	18.3	35.3	42	22.2	16.0	30.3
Non-Hodgkin's Lymphoma	37	24.5	17.2	33.9	40	22.1	15.7	30.3
Leukaemia	31	20.4	13.9	29.1	17	9.3	5.4	15.2
Stomach Cancer	22	14.8	9.3	22.5	15	7.7	4.3	13.0
Liver Cancer	22	14.3	9.0	21.8	20	10.5	6.4	16.4
Cervical Cancer	-	-	-	-	19	12.1	7.3	19.0
All Cancers (excluding Non-Melanoma Skin Cancer)	1,093	724.3	681.8	768.8	1,165	638.9	602.4	677.1

Notes and Definitions

1. Cancers are ranked by ASR (Age Standardised Rate)
2. The number of cancers refers to newly diagnosed cancers (incidence) reported to regional cancer registries during this time period 2015. An ASR is a weighted average of the age-specific cancer incidence rates accounting for age and gender, which are comparable over time. These are not the same as Standardised Registration Ratios (SRRs)
3. 95% Confidence Intervals (CIs) indicate the range within which the true value of the indicator has a 95% chance of falling, e.g. a 95% CI for Wirral men with stomach cancer is 9.3 to 22.5, this means that we can be 95% certain that the true value lies somewhere between 9.3 to 22.5
4. All Cancer refers to the total number of newly diagnosed cancers reported and includes some cancers not listed above, meaning figures may not sum
5. * denotes numbers less than 5 which have been suppressed. A hyphen denotes no data (usually because that type of cancer is gender specific)

Source: www.CancerData.nhs.uk

SECTION 5: MORBIDITY, DISABILITY AND HEALTHCARE

TABLE 5h

GP DISEASE REGISTER PREVALENCE RATES, WIRRAL CLINICAL COMMISSIONING GROUP (CCG), 2016/17

Condition (age specified where relevant)	Wirral CCG		North of England %	England %
	Total Number	%		
Atrial Fibrillation	8,778	2.56	1.96	1.84
Coronary Heart Disease	13,018	3.79	3.78	3.15
Heart Failure	3,478	1.01	0.93	0.79
Hypertension	53,058	15.46	14.61	13.83
Stroke/TIA	7,631	2.22	1.98	1.75
Asthma	22,278	6.49	6.37	5.94
Chronic Obstructive Pulmonary Disease (COPD)	8,364	2.44	2.44	1.87
Cancer	10,254	2.99	2.67	2.58
Chronic Kidney Disease (18+)	13,290	4.85	4.50	4.09
Diabetes Mellitus (17+)	19,428	6.99	6.99	6.67
Palliative Care	2,056	0.60	0.44	0.37
Dementia	3,304	0.96	0.83	0.76
Depression (18+) (Lifetime)	34,413	12.56	10.14	9.09
Depression (18+) (Diagnosed in the past year)	5,773	2.11	1.32	1.17
Epilepsy (18+)	2,736	1.00	0.92	0.80
Learning Disability (all ages)	2,213	0.64	0.53	0.47
Mental Health	3,545	1.03	0.96	0.92
Osteoporosis (50+)	866	0.62	0.44	0.47
Rheumatoid Arthritis (16+)	1,918	0.68	0.79	0.74

Notes and Definitions

1. The Quality and Outcomes Framework (QOF) is a reward and incentive system for GP surgeries to keep up to date disease/condition registers
2. The total number relates to patients registered with the condition in all Wirral practices
3. Prevalence calculated using total eligible practice populations as a denominator
4. As some indicators are age-specific, prevalence will be calculated using total eligible practice populations in the appropriate age bands where necessary
5. Newly diagnosed depression are those that have been diagnosed with depression within the last year, aged 18 and over

Source: [NHS Digital](#)

SECTION 5: MORBIDITY, DISABILITY AND HEALTHCARE

TABLE 5i

HOSPITAL ADMISSION RATES FOR ALCOHOL-RELATED CONDITIONS, WIRRAL, 2016/17

Area	Admitted to hospital with alcohol-related conditions (Narrow): Males, all ages (2016/17)				Admitted to hospital with alcohol-related conditions (Narrow): Females, all ages (2016/17)				Admitted to hospital with alcohol-related conditions (Narrow): All persons, all ages (2016/17)			
	Count	DSR per 100,000 population	Lower 95% CI	Upper 95% CI	Count	DSR per 100,000 population	Lower 95% CI	Upper 95% CI	Count	DSR per 100,000 population	Lower 95% CI	Upper 95% CI
Wirral	1,781	1,178.6	1,124.0	1,235.1	1,054	636.9	598.7	677.0	2,834	889.2	856.6	922.8
North West	32,140	958.6	948.0	969.3	18,001	501.0	493.7	508.4	50,141	718.8	712.5	725.2
England	207,823	818.4	814.8	821.9	129,290	473.2	470.7	475.8	337,113	636.4	634.2	638.6

Notes and Definitions

1. The 'Narrow Measure' for alcohol related hospital admissions was introduced in 2012/13 and only includes admissions where the primary diagnosis code has an alcohol attributable fraction (which means the admission is wholly or partially alcohol-related), or where either primary code or secondary code has an alcohol-attributable fraction
2. The results are presented as directly age-standardised rates (DSR) per 100,000 European standard population (2013). Age-standardised rates are used to allow comparison between populations which may contain different proportions of people of different ages
3. 95% Confidence Intervals indicate the range within which the true value of the rate lies, e.g. a 95% CI for Wirral of 818.2 to 882.7 (all persons) means that we can be 95% certain that the true rate lies somewhere between these two values
4. Various changes have been made to the methodology of this indicator within the Local Alcohol Profiles for England (LAPE), including geography updates and attributable fractions. This means that figures beyond 2014/15 are not comparable with previous years. For more information, please visit: <http://www.lape.org.uk>

Source: Local Alcohol Profiles for England (LAPE), [Public Health England \(PHE\)](#)

SECTION 5: MORBIDITY, DISABILITY AND HEALTHCARE

TABLE 5j

EMERGENCY ADMISSIONS IN RESIDENTS AGED 50+, BY AREA, 2014/15 - 2016/17
AND 2015/16 - 2017/18

Area	2014/15 - 2016/17		2015/16 - 2017/18	
	Number	Rate per 1,000	Number	Rate per 1,000
Bebington	3,341	170.3	3,289	166.7
Bidston & St James	3,952	271.0	3,938	263.9
Birkenhead & Tranmere	3,657	260.2	3,553	250.5
Bromborough	3,756	219.0	3,781	218.0
Clatterbridge	3,950	185.9	4,039	191.0
Claughton	4,128	222.6	4,047	215.8
Eastham	3,601	195.4	3,570	190.2
Greasby, Frankby & Irby	3,585	169.9	3,618	171.7
Heswall	3,287	154.3	3,247	149.9
Hoylake & Meols	3,405	183.7	3,462	186.4
Leasowe & Moreton East	4,084	248.5	4,043	242.5
Liscard	3,644	207.2	3,632	203.6
Moreton West & Saughall Massie	3,665	201.3	3,667	197.9
New Brighton	4,109	227.8	3,977	213.9
Oxton	4,307	236.8	4,277	232.3
Pensby & Thingwall	3,569	183.6	3,503	180.6
Prenton	3,435	189.9	3,355	183.3
Rock Ferry	3,852	276.1	3,828	268.0
Seacombe	3,341	238.1	3,379	237.9
Upton	4,601	232.8	4,650	234.8
Wallasey	3,538	173.3	3,413	166.1
West Kirby & Thurstaston	3,438	181.0	3,518	183.5
Wirral	82,245	206.8	81,786	203.5
England	*	*	*	166.1

Notes and Definitions

1. 2014/15 - 2016/17 figures were calculated using the ONS mid-2015 population estimates. Similarly, the 2015/16 - 2017/18 figures were calculated using the ONS mid-2016 population estimates
2. The data relates to emergency admissions generated between April 2014 to March 2017 and April 2015 to March 2018
3. Data presented is for 3 pooled years to smooth out random year-on-year variations which can characterise small datasets such as emergency admissions by ward
4. An emergency admission relates to those who have been admitted to hospital via a non-elective route
5. * Denotes a figure not available at the time of printing

Source: Hospital Episode Statistics (HES)

SECTION 6: MORTALITY

TABLE 6a

INFANT AND PERINATAL MORTALITY RATES, BY AREA, 2013-15 (3 YEARS POOLED)

Stage of Infancy	Wirral		North West		England	
	Number of Deaths	Rate per 1,000	Number of Deaths	Rate per 1,000	Number of Deaths	Rate per 1,000
Perinatal	69	6.4	1,776	6.9	13,257	6.6
Neonatal	21	2.0	715	2.8	5,390	2.7
Post neonatal	14	1.3	367	1.4	2,344	1.2
Infant	35	3.3	1,082	4.2	7,734	3.9

Notes and Definitions

1. Perinatal Mortality Rate: Number of stillbirths and deaths of infants aged less than 7 days, per 1,000 live and still births
2. Neonatal Mortality Rate: Number of deaths to infants aged less than 28 days, per 1,000 live births
3. Post-neonatal Mortality Rate: Number of deaths to infants aged 28 days to 1 year, per 1,000 live births
4. Infant Mortality Rate: Number of deaths to infants aged less than 1 year, per 1,000 live births
5. No update was available at the time of printing

Source: [NHS Digital](#)

SECTION 6: MORTALITY

TABLE 6b

TREND IN INFANT MORTALITY, WIRRAL AND ENGLAND, 2002-04 TO 2014-16
(3 YEARS POOLED)

Years	Wirral				England			
	Total No. of Infant Deaths	Infant Mortality Rate	95% Confidence Intervals		Total No. of Infant Deaths	Infant Mortality Rate	95% Confidence Intervals	
			Lower Limit	Upper Limit			Lower Limit	Upper Limit
2002-04	43	4.2	3.1	5.6	9,652	5.2	5.1	5.3
2003-05	55	5.2	4.0	6.7	9,725	5.1	5.0	5.2
2004-06	52	4.9	3.7	6.4	9,780	5.0	4.9	5.1
2005-07	51	4.7	3.6	6.2	9,855	4.9	4.8	5.0
2006-08	50	4.5	3.4	6.0	9,969	4.8	4.7	4.9
2007-09	52	4.7	3.5	6.1	10,051	4.8	4.7	4.9
2008-10	56	5.0	3.8	6.5	9,717	4.5	4.5	4.6
2009-11	53	4.7	3.6	6.2	9,512	4.4	4.3	4.5
2010-12	59	5.2	4.0	6.7	8,822	4.3	4.2	4.4
2011-13	53	4.7	3.6	6.2	8,467	4.1	4.0	4.2
2012-14	44	4.0	3.0	5.4	8,029	4.0	3.9	4.1
2013-15	35	3.3	2.3	4.6	7,734	3.9	3.9	4.0
2014-16	41	3.9	2.8	5.3	7,710	3.9	3.9	4.0

Notes and Definitions

1. The Infant Mortality Rate is defined as the number of deaths in infants aged less than 1 year, per 1,000 live births to mothers resident in the area
2. Data is presented as 3-year totals, produced by aggregating numbers of births and deaths for each three-year period (e.g. 2001-03, 2002-04, etc.). This is to smooth out random year-on-year variations
3. Confidence intervals (CIs) indicate the range within which the true value of the indicator has a 95% chance of falling, e.g. a 95% CI for Wirral of 3.0 to 5.4 means that we can be 95% certain the true Infant Mortality rate for Wirral lies somewhere between 3.0 and 5.4

Source: Public Health Outcomes Framework [Public Health England \(PHE\)](#)

SECTION 6: MORTALITY

TABLE 6c

PREMATURE MORTALITY FROM ALL CANCERS, WIRRAL, 2002-04 TO 2014-16
(3 YEARS POOLED)

Years	Total Number of Deaths	DSR	95% Confidence Interval	
			Lower Limit	Upper Limit
2002-04	1,515	189.5	180.1	199.3
2003-05	1,415	176.2	167.1	185.7
2004-06	1,420	176.2	167.1	185.6
2005-07	1,441	178.1	169.0	187.5
2006-08	1,486	182.6	173.4	192.2
2007-09	1,467	178.4	169.3	187.7
2008-10	1,411	169.0	160.3	178.1
2009-11	1,413	166.8	158.2	175.8
2010-12	1,352	157.4	149.1	166.1
2011-13	1,359	155.9	147.7	164.4
2012-14	1,323	149.3	141.3	157.6
2013-15	1,375	153.0	145.0	161.3
2014-16	1,394	153.1	145.2	161.4

Notes and Definitions

1. This is a Public Health Outcomes Framework indicator (4.05i)
2. Premature mortality defined as deaths in those aged under 75 years
3. The results are presented as directly age-standardised rates (DSR) per 100,000 population (European standard population)
4. Number of deaths from all cancers (classified by underlying cause of death recorded as ICD codes C00-C97) registered in the respective calendar years, in people aged under 75
5. Counts of deaths for years up to and including 2010 have been adjusted were needed to take account of the ICD-10 coding changes introduced in 2011
6. 95% Confidence Intervals indicate the range within which the true value of rate lie, e.g. a 95% CI for Wirral of 145.2 to 161.4 means that we can be 95% certain that the true value lies between these two values

Source: Public Health Outcomes Framework, [Public Health England \(PHE\)](#)

SECTION 6: MORTALITY

TABLE 6d

PREMATURE MORTALITY FROM CARDIOVASCULAR DISEASE, WIRRAL, 2002-04 TO 2014-16 (3 YEARS POOLED)

Years	Total Number of Deaths	DSR	95% Confidence Interval	
			Lower Limit	Upper Limit
2002-04	1,112	139.5	131.4	148.0
2003-05	1,074	134.6	126.7	142.9
2004-06	958	119.7	112.3	127.6
2005-07	881	109.6	102.4	117.1
2006-08	838	103.4	96.5	110.6
2007-09	848	103.3	96.5	110.6
2008-10	841	101.1	94.4	108.2
2009-11	775	92.3	85.9	99.1
2010-12	741	87.5	81.3	94.0
2011-13	685	79.4	73.6	85.6
2012-14	726	82.3	76.4	88.6
2013-15	730	81.5	75.7	87.6
2014-16	743	82.0	76.2	88.2

Notes and Definitions

1. This is a Public Health Outcomes Framework indicator (4.04i)
2. Premature mortality defined as deaths in those aged under 75 years
3. The results are presented as directly age-standardised rates (DSR) per 100,000 European standard population
4. Number of deaths from all cardiovascular diseases (classified by underlying cause of death recorded as ICD codes I00-I99) registered in the respective calendar years, in people aged under 75
5. Counts of deaths for years up to and including 2010 have been adjusted to take account of the ICD-10 coding changes introduced in 2011
6. 95% Confidence Intervals indicate the range within which the true value of the rate lies, e.g. a 95% CI for Wirral of 75.7 to 97.6, means that we can be 95% certain that the true rate of premature mortality from CVD in Wirral, was somewhere between these two values
7. Data presented is for 3 pooled years to smooth out the random year-on-year variations which can characterise small datasets

Source: Public Health Outcomes Framework, [Public Health England \(PHE\)](#)

SECTION 6: MORTALITY

TABLE 6e

PREMATURE MORTALITY FROM RESPIRATORY DISEASE, WIRRAL, 2002-04 TO 2014-16 (3 YEARS POOLED)

Years	Total Number of Deaths	DSR	95% Confidence Interval	
			Lower Limit	Upper Limit
2002-04	367	46.3	41.6	51.2
2003-05	352	44.2	39.7	49.1
2004-06	359	45.0	40.5	49.9
2005-07	365	45.6	41.0	50.5
2006-08	385	47.8	43.1	52.8
2007-09	353	43.2	38.8	48.0
2008-10	349	42.1	37.8	46.8
2009-11	352	42.0	37.7	46.6
2010-12	366	43.4	39.0	48.1
2011-13	392	46.0	41.5	50.8
2012-14	385	44.3	40.0	48.9
2013-15	411	46.3	41.9	51.0
2014-16	461	51.1	46.5	56.0

Notes and Definitions

1. This is a Public Health Outcomes Framework indicator (4.07i)
2. Premature mortality defined as deaths in those aged under 75 years
3. The results are presented as directly age-standardised rates (DSR) per 100,000 European standard population
4. Number of deaths from respiratory diseases (classified by underlying cause of death recorded as ICD codes J00-J99) registered in the respective calendar years, in people aged under 75
5. Counts of deaths for years up to and including 2010 have been adjusted to take account of the ICD-10 coding changes introduced in 2011
6. 95% Confidence Intervals indicate the range within which the true value of rate lie, e.g. a 95% CI for Wirral of 41.9 to 51.0 means that we can be 95% certain that the true value lies somewhere between these two values
7. Data presented is for 3 pooled years to smooth out the random year-on-year variations which can characterise small datasets

Source: Public Health Outcomes Framework, [Public Health England \(PHE\)](#)

SECTION 6: MORTALITY

TABLE 6f

**PREMATURE MORTALITY FROM LIVER DISEASE, WIRRAL, 2002-04 TO 2014-16
(3 YEARS POOLED)**

Years	Total Number of Deaths	DSR	95% Confidence Interval	
			Lower Limit	Upper Limit
2002-04	203	24.4	21.2	28.0
2003-05	213	25.5	22.2	29.2
2004-06	229	27.4	24.0	31.2
2005-07	239	28.4	24.9	32.3
2006-08	250	29.8	26.2	33.7
2007-09	252	29.7	26.1	33.6
2008-10	263	30.8	27.2	34.8
2009-11	255	29.8	26.2	33.7
2010-12	238	27.4	24.0	31.2
2011-13	224	25.5	22.2	29.0
2012-14	217	24.6	21.4	28.1
2013-15	234	26.4	23.1	30.0
2014-16	252	28.2	24.8	32.0

Notes and Definitions

1. This is a Public Health Outcomes Framework indicator (4.06i)
2. Premature mortality defined as deaths in those aged under 75 years
3. The results are presented as directly age-standardised rates (DSR) per 100,000 European standard population
4. Number of deaths from liver disease (classified by underlying cause of death recorded as ICD codes B15-B19, C22, I81, I85, K70-K77, T86.4) registered in the respective calendar years, in people aged under 75
5. Counts of deaths for years up to and including 2010 have been adjusted to take account of the ICD-10 coding changes introduced in 2011
6. 95% Confidence Intervals indicate the range within which the true value of rates lie, e.g. a 95% CI for Wirral of 23.1 to 30.0, means that we can be 95% certain that the true value lies somewhere between these two values
7. Data presented is for 3 pooled years to smooth out the random year-on-year variations which can characterise small datasets

Source: Public Health Outcomes Framework, [Public Health England \(PHE\)](#)

SECTION 6: MORTALITY

TABLE 6g

MORTALITY FROM SUICIDE AND UNDETERMINED INJURY, WIRRAL, 2002-04 TO 2014-16 (3 YEARS POOLED)

Years	Total Number of Deaths	DSR	95% Confidence Interval	
			Lower Limit	Upper Limit
2002-04	111	13.7	11.3	16.6
2003-05	104	12.7	10.3	15.4
2004-06	107	13.1	10.7	15.8
2005-07	112	13.6	11.2	16.4
2006-08	113	13.9	11.4	16.7
2007-09	88	10.7	8.6	13.2
2008-10	63	7.6	5.9	9.8
2009-11	61	7.3	5.5	9.3
2010-12	68	8.1	6.3	10.3
2011-13	74	8.9	7.0	11.2
2012-14	83	10.2	8.1	12.7
2013-15	88	10.7	8.6	13.2
2014-16	100	11.9	9.7	14.5

Notes and Definitions

1. This is a Public Health Outcomes Framework indicator (4.10)
2. The results are presented as directly age-standardised rates (DSR) per 100,000 European standard population
3. Number of deaths from suicide and injury of undetermined intent classified by underlying cause of death recorded as ICD10 codes X60-X84 (all ages), Y10-Y34 (ages 15+ only) registered in the respective calendar years
4. Counts of deaths for years up to and including 2010 have been adjusted to take account of the ICD-10 coding change introduced in 2011
5. 95% Confidence Intervals indicate the range within which the true value of rates lie, e.g. a 95% CI for Wirral of 8.6 to 13.2 means that we can be 95% certain that the true value lies somewhere between these two values
6. Data presented is for 3 pooled years to smooth out the random year-on-year variations which can characterise small datasets

Source: Public Health Outcomes Framework, [Public Health England \(PHE\)](#)

SECTION 6: MORTALITY

TABLE 6h

STANDARDISED MORTALITY RATIOS (SMR) BY CAUSE, WITH 95% CONFIDENCE LIMITS, WIRRAL LOCAL AUTHORITY, 2014-16

Cause	Number	SMR	95 % Confidence Intervals	
			Lower	Upper
All cancers	3,091	111.2	107.3	115.2
Lung cancer	678	114.9	106.5	123.9
Coronary (Ischaemic) Heart Disease	1,091	94.9	89.4	100.7
Stroke	748	113.5	105.5	122.0
Liver Disease	327	138.2	123.6	154.0
Accidents	358	146.2	131.4	162.1
Suicide and Undetermined Injury	100	118.9	96.7	144.6
All causes	11,035	110.5	108.4	112.6

Notes and Definitions

1. The results are presented as indirectly standardised mortality ratios (SMR) for all ages
2. Standardised Mortality Ratios (SMR) is a way of comparing death rates in a particular area with those in the national population. The SMR for England is 100, and in this table, the SMR for Wirral in 2014-16 is 110.5. This means that Wirral has a mortality rate 10.5% higher than the national average (after taking account of differences in the age structure of the two populations)
3. In some cases the cause of death mentioned on the death certificate may be amended by ONS following discussion with the relevant clinician. The data presented in this table is based on the underlying causes of death
4. Data relating to deaths classed as 'Suicide and Injury Undetermined' during 2014-16 relates to those aged 15+ years only, as opposed to all ages
5. 95% Confidence Intervals (CIs) indicate the range within which the true value of the rate will fall, e.g. a 95% CI for all causes of mortality in Wirral of 108.4 to 112.6 means that we can be 95% certain the true value lies between these two figures
6. For more information regarding which ICD-10 codes were used to calculate these figures please see Table 7a

Source: [NOMIS](#)

SECTION 6: MORTALITY

TABLE 6i

TREND IN MORTALITY FROM ALL CAUSES OF DEATH, BY AREA, 2005 TO 2016

Year	Wirral						North West		England	
	Males		Females		Persons		Persons		Persons	
	Number of Deaths	Rate per 100,000	Number of Deaths	Rate per 100,000	Number of Deaths	Rate per 100,000	Number of Deaths	Rate per 100,000	Number of Deaths	Rate per 100,000
2005	1,660	1,448.6	1,944	1,031.3	3,604	1,194.7	71,210	*	479,678	1,143.8
2006	1,708	1,440.0	1,867	977.0	3,575	1,168.1	69,826	*	470,326	1,104.2
2007	1,817	1,549.5	1,905	989.6	3,722	1,210.4	70,512	*	470,721	1,091.7
2008	1,642	1,352.9	1,985	1,033.5	3,627	1,172.3	70,740	*	475,763	1,091.8
2009	1,677	1,355.3	1,894	980.6	3,571	1,137.1	67,937	*	459,241	1,033.7
2010	1,617	1,298.8	1,928	987.5	3,545	1,114.1	67,738	*	461,017	1,017.0
2011	1,589	1,216.1	1,781	890.8	3,370	1,036.3	66,372	*	452,862	978.6
2012	1,639	1,236.9	1,902	938.4	3,541	1,065.9	68,262	*	466,779	987.4
2013	1,766	1,319.4	1,867	911.0	3,633	1,084.8	69,045	1,089.1	473,552	979.2
2014	1,693	1,094.5	1,855	1,115.9	3,548	1,105.6	63,818	957.8	468,875	863.2
2015	1,748	1,255.6	2,021	976.1	3,769	1,096.9	71,299	1,088.7	495,309	986.6
2016	1,807	1,271.3	1,911	923.3	3,718	1,070.4	71,315	1,069.4	490,791	959.8

Notes and Definitions

1. The age-standardised mortality rates for 2013 are standardised to the 2013 European Standard Population (expressed as a rate per 100,000 population). Age-standardised rates are used to allow comparison between populations which may contain different proportions of people of different ages. The European standard populations were updated in 2014. This affected the calculation of the 2013 rate and means that 2013 figures are not comparable with previous years
2. The results are presented as directly age-standardised rates (DSR) per 100,000 population
3. *Figures not available at time of going to print

Source: [NHS Digital](#)

SECTION 6: MORTALITY

TABLE 6j

ALCOHOL SPECIFIC MORTALITY, BY AREA, 2014-16 (3 YEARS POOLED)

Area	Alcohol-specific mortality: Males, all ages (2014-16)				Alcohol-specific mortality: Females, all ages (2014-16)			
	Count	DSR	Lower 95% CI	Upper 95% CI	Count	DSR	Lower 95% CI	Upper 95% CI
Wirral	82	17.9	14.2	22.2	68	13.4	10.4	16.9
North West	1,983	19.7	18.8	20.5	1,093	10.4	9.8	11.0
England	10,777	14.2	14.0	14.5	5,419	6.8	6.7	7.0

Notes and Definitions

1. The results are presented as directly age-standardised rates (DSR) per 100,000 population
2. 95% Confidence Intervals indicate the range within which the true value of rate lie, e.g. a 95% CI for males in Wirral is 14.2 to 22.2 means that we can be 95% certain that the true value lies somewhere between the two values
3. Deaths recorded are from alcohol specific conditions (conditions which can only be caused by alcohol). See [Local Alcohol Profiles for England](#) guidance for full list of ICD 10 codes. ICD-10 groupings can be found in the Appendix of this compendium
4. The LAPE dataset was refreshed on 2 June 2015 and includes an amended methodology for generating the mortality indicators by searching all cause of deaths fields for three conditions (Ethanol poisoning, Methanol poisoning, Toxic effect of alcohol) which are not permitted as an underlying cause of death. This amendment has been applied to the full time series. Therefore data in issues of the Compendium prior to 2016 are not comparable

Source: *Local Alcohol Profiles for England (LAPE)*, [Public Health England \(PHE\)](#)

SECTION 6: MORTALITY

TABLE 6k

MORTALITY FROM ALL CAUSES BY AREA, 2015-17 (3 YEARS POOLED)

Area	Number of Deaths	DSR per 100,000	Lower 95% CI	Upper 95% CI
Bebington	512	947.1	865.1	1,029.2
Bidston & St James	474	1,466.9	1,334.8	1,599.0
Birkenhead & Tranmere	387	1,252.9	1,128.1	1,377.7
Bromborough	540	1,255.5	1,149.6	1,361.4
Clatterbridge	580	1,012.2	929.9	1,094.6
Claughton	777	1,483.2	1,378.9	1,587.4
Eastham	410	808.9	730.6	887.2
Greasby, Frankby & Irby	416	723.8	654.2	793.3
Heswall	463	674.2	612.8	735.6
Hoyle & Meols	595	1,019.2	937.3	1,101.1
Leasowe & Moreton East	437	1,084.9	983.2	1,186.7
Liscard	549	1,249.0	1,144.6	1,353.5
Moreton West & Saughall Massie	450	1,014.5	920.8	1,108.3
New Brighton	570	1,210.1	1,110.8	1,309.5
Oxton	407	876.2	791.1	961.3
Pensby & Thingwall	452	805.3	731.0	879.5
Prenton	421	925.5	837.1	1,014.0
Rock Ferry	533	1,505.2	1,377.4	1,633.0
Seacombe	401	1,209.6	1,091.2	1,328.0
Upton	730	1,282.2	1,189.2	1,375.2
Wallasey	420	781.8	707.0	856.6
West Kirby & Thurstaston	431	775.1	701.9	848.3
Not matched to a Wirral ward	48	-	-	-
Wirral	11,003	1,044.0	1,024.5	1,063.5

Notes and Definitions

1. The results are presented as directly age-standardised rates (DSR) per 100,000 population
2. 95% Confidence Intervals indicate the range within which the true value of rate lie, e.g. a 95% CI for deaths in Bebington is 865.1 to 1029.2, which means that we can be 95% certain that the true value lies somewhere between of 865.1 to 1029.2
3. Three calendar years have been presented together, to ensure robustness at the small area level shown (ward)

Source: Office of National Statistics ([ONS](#))

SECTION 6: MORTALITY

TABLE 6I

PLACE OF DEATH BY AREA, 2016

Area	Age Band	Hospital (%)	Home (%)	Care Home (%)	Hospice (%)	Other (%)	DIUPR (%)
Wirral	0-64	50.0	34.5	3.4	7.2	4.8	31.3
	65-74	54.5	27.9	9.9	6.4	1.3	37.5
	75-84	54.9	23.6	17.5	2.3	1.7	43.5
	85+	44.3	17.6	35.7	0.5	1.9	53.6
North West	0-64	47.7	34.7	2.5	9.2	5.9	35.3
	65-74	50.7	30.6	7.9	9.4	1.5	38.2
	75-84	52.3	23.0	17.8	5.7	1.2	41.6
	85+	45.6	14.5	36.6	2.1	1.2	52.5
England	0-64	45.6	33.9	2.9	10.4	7.2	35.5
	65-74	49.2	30.3	8.6	10.0	2.0	39.1
	75-84	50.5	23.8	18.7	5.6	1.4	43.1
	85+	43.8	16.4	36.7	2.1	1.0	54.1

Notes and Definitions

1. DIUPR stands for Death in Usual Place of Residence. This can include home, care homes (local authority and non-local authority) and religious establishments
2. Percentages have been rounded so may not exactly sum

Source: Public Health Outcomes Framework, [Public Health England \(PHE\)](#)

SECTION 7: APPENDICES

Table 7a

LIST OF INTERNATIONAL CLASSIFICATION OF DISEASE (ICD) CODES FOR CAUSES OF DEATH INCLUDED IN COMPENDIUM, 2015

Cause	ICD-10 Code
All Cancers	C00-C97
- Colorectal Cancer	C18-C21
- Lung Cancer	C33-C34
- Female Breast cancer	C50
- Cervical Cancer	C53
- Prostate Cancer	C61
All Circulatory Disease	I00-I99
- Cardiovascular Disease	I20-I26, I42.6, I71, I80.1-I80.3, I80.9, I82.9
- Coronary (Ischaemic) Heart Disease	I20-I25
- Cerebrovascular Disease (Stroke)	I60-I69
Diseases of Respiratory System	J00-J99
- Pneumonia	J12-J18
- Bronchitis, Emphysema and COPD	J40-J44
- Asthma	J45-J46
Diseases of Digestive System	K00-K93
- Chronic Liver Disease incl. Cirrhosis	K70, K73-K74
External Causes of Injury	V01-Y89
- Accidents	V01-X59
- Suicide and Injury Undetermined	X60-X84, Y10-Y34

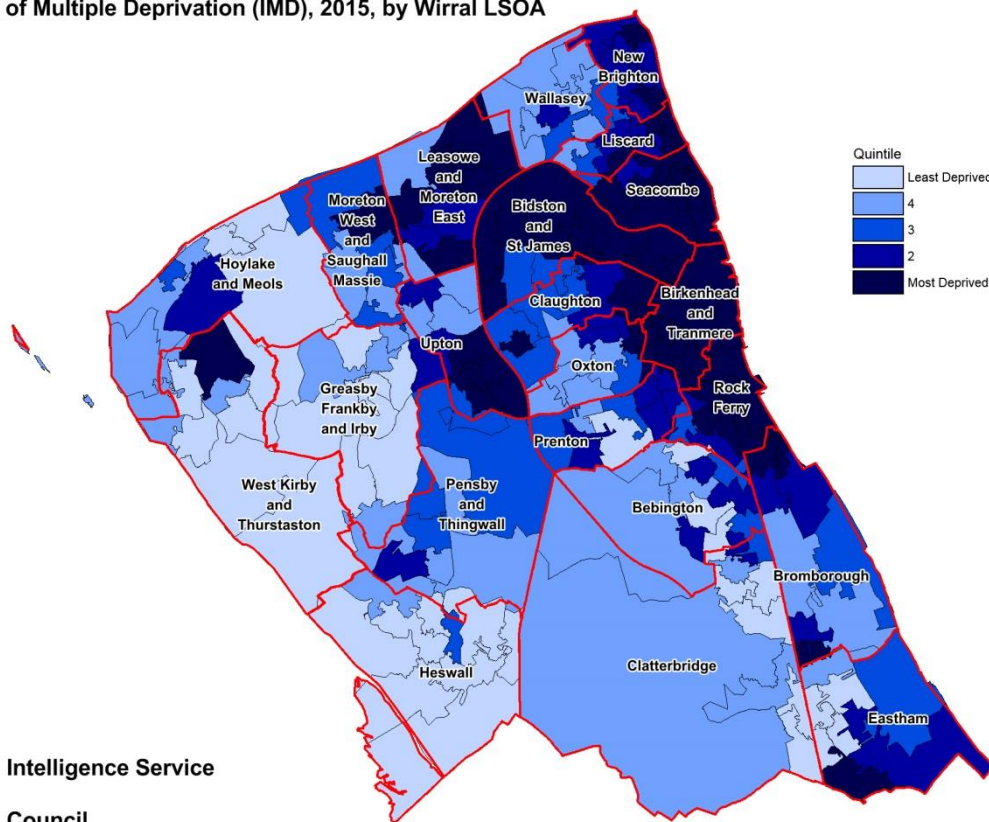
The International Classification of Diseases (ICD) is the standard diagnostic tool used by health professionals to classify diseases and other health problems. ICD-10 came into use in World Health Organisation (WHO) member States from 1994. The ICD is currently under revision, with a release date for the ICD-11 in 2018.

SECTION 7: APPENDICES

Map 7a

INDEX OF MULTIPLE DEPRIVATION (IMD) 2015 SCORES FOR WIRRAL BY LSOA

Index of Multiple Deprivation (IMD), 2015, by Wirral LSOA



Wirral Intelligence Service
Wirral Council

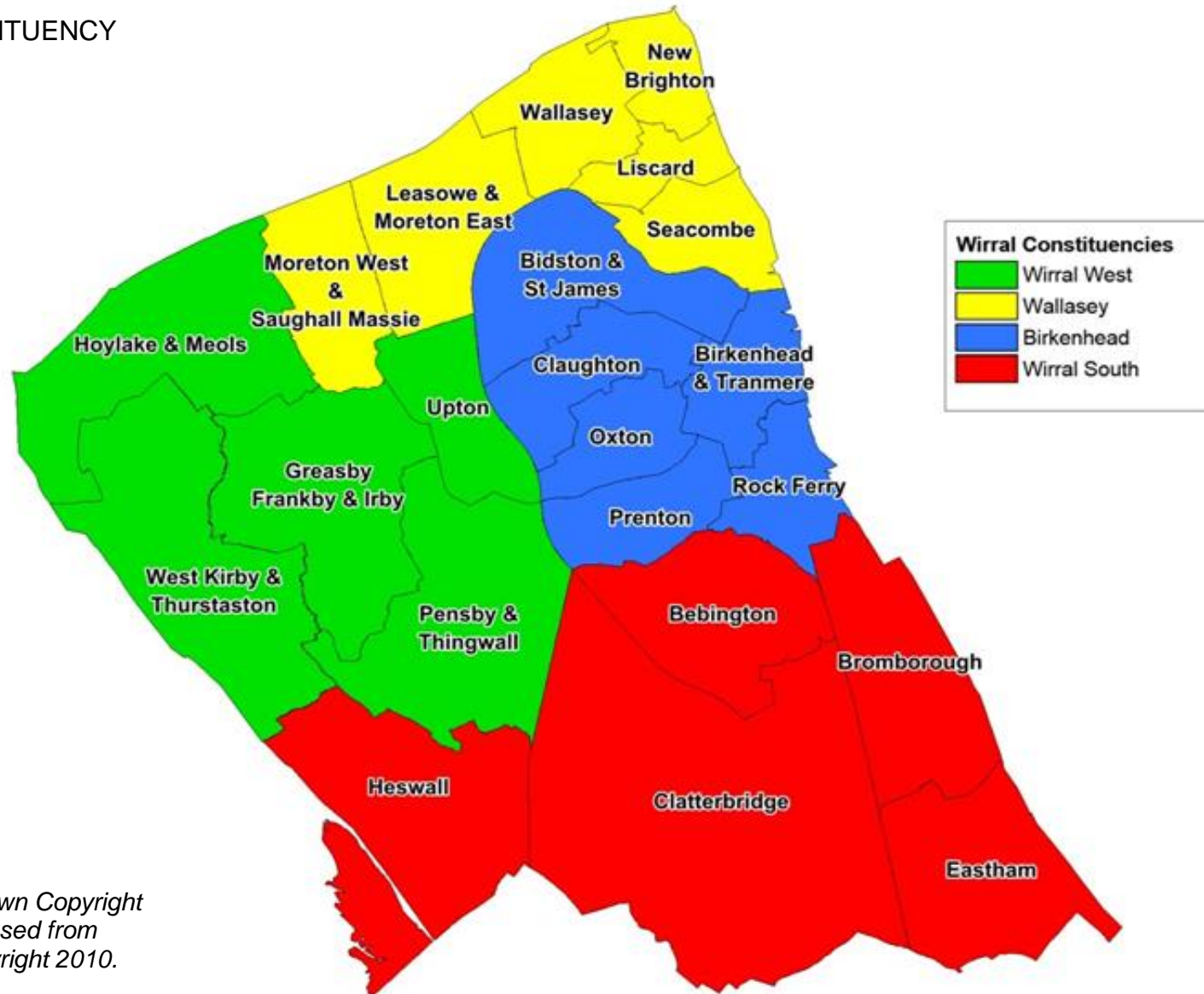
Notes and Definitions

1. This map shows the Index of Multiple Deprivation (IMD 2015) score for Lower Layer Super Output Areas (LSOA) across Wirral. The more disadvantaged the area, the higher the score. The darker shading indicates higher deprivation levels, i.e. most disadvantaged area. Lighter shading indicates less disadvantaged areas
2. The IMD 2015 aims to measure as accurately as possible the distribution of deprivation across an area. It uses 7 measures of deprivation (Income, Employment, Health Deprivation and Disability, Education, Skills and Training, Barriers to Housing and Services, Crime and Living Environment)

Source: Department of Communities and Local Government ([DCLG](#))
Map includes mapping data licensed from Ordnance Survey © Crown Copyright 2010.
License Number 100019918

SECTION 7: APPENDICES

WIRRAL WARDS BY CONSTITUENCY



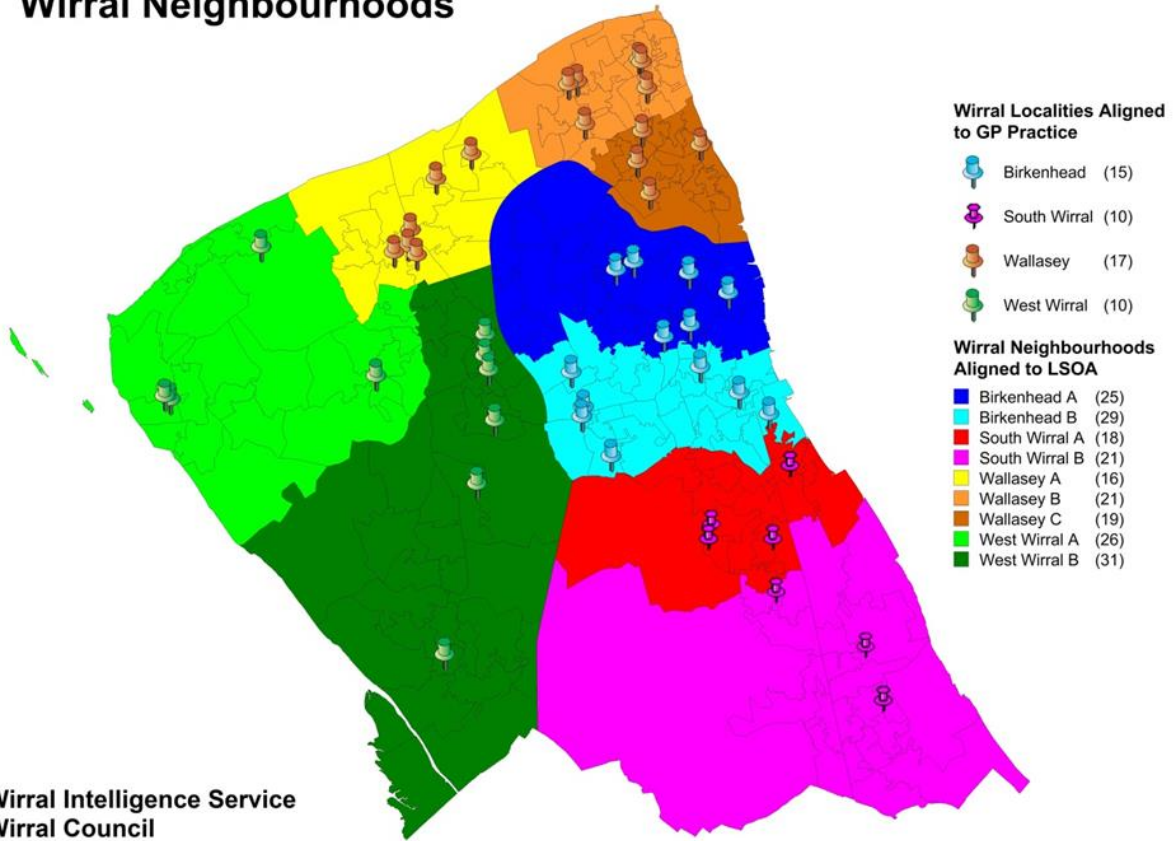
Source: Ordnance Survey © Crown Copyright
Map includes mapping data licensed from
Ordnance Survey © Crown Copyright 2010.
License Number 100019918

SECTION 7: APPENDICES

Map 7c

WIRRAL GP PRACTICES BY LOCALITY AND NEIGHBOURHOOD

Wirral Neighbourhoods



Source: Ordnance Survey © Crown Copyright
Map includes mapping data licensed from
Ordnance Survey © Crown Copyright 2010
License Number 10019918



Wirral Compendium of Statistics 2018

Compiled and produced by
Wirral Intelligence Service
Wirral Council
Old Market House
Hamilton Street
Birkenhead
CH41 5AL
0151 606 2000

Electronic, text only version of this compendium available at:
<https://www.wirralintelligenceservice.org/>

Many thanks to Imagine Wirral and Jack Font, who gave their kind permission to use their images on the front and back covers of this compendium.



**WIRRAL
INTELLIGENCE
SERVICE**