

Wirral Compendium of Statistics



2020

WIRRAL COMPENDIUM OF STATISTICS 2020

INTRODUCTION

Wirral Council is pleased to present the thirteenth annual edition of our Compendium of Statistics.

The compendium is a reference guide to the most recent information on Wirral and its residents. The compendium is a part of Wirral's Joint Strategic Needs Assessment (JSNA).

The JSNA outlines the health and wellbeing of residents and identifies inequalities and gaps in service provision. It is developed through co-production with service users, commissioners, service providers and resident feedback. It is the evidence base which drives the development of services for residents and supports evidence-based decision making across the Wirral Partnership.

The JSNA is hosted on the Wirral Intelligence Service website alongside other key useful information about Wirral: <https://www.wirralintelligenceservice.org/>

Whether you are an individual, part of a local community group or organisation, it is important that you have a voice in shaping local services. Getting involved in developing the JSNA will enable you to do this.

We would like to thank all those in Wirral Council and Wirral Clinical Commissioning Group (CCG) who contributed information and data for this compendium.

It is strongly recommended that reference be made to the notes and definitions when using this information. Please also take care when comparing the information displayed in this edition with future editions of the Compendium of Statistics.

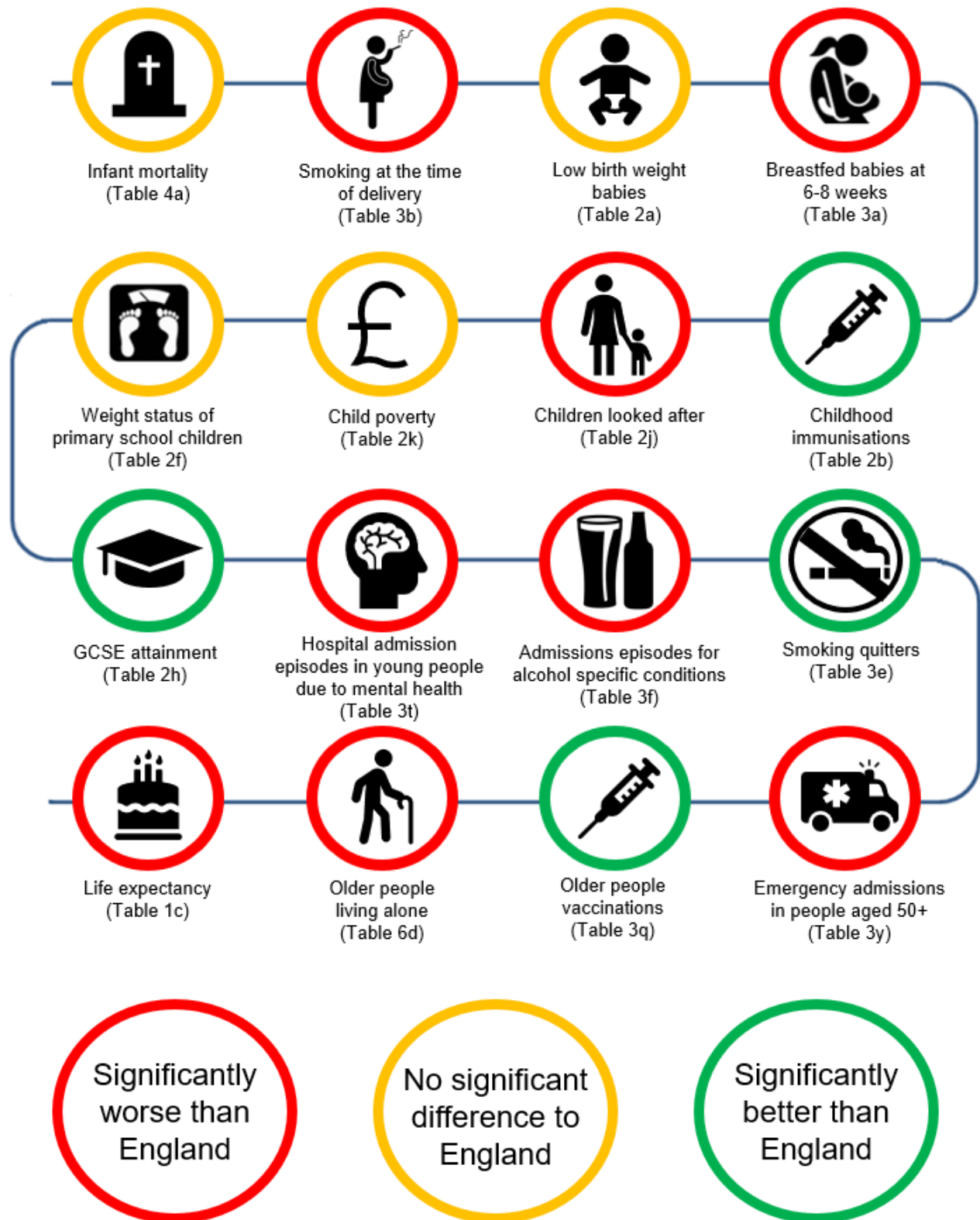
Please also be aware that the current COVID-19 pandemic is likely to have a great effect on several tables in future editions of this Compendium. As most data publications are at least 12-18 months behind, the impacts of COVID will not be fully apparent until 2021 or 2022.

If you would like any further information, please contact:

✉ wirralintelligenceservice@wirral.gov.uk

☎ 0151 606 2000

About Wirral



The data behind all the above icons can be found on the following pages. Navigation to tables has now been made quicker and easier, with the option of clicking either the table number (e.g. Table 1a) or the table title (e.g. Trend in birth and fertility rates) within the Contents Page to go directly to that table.

CONTENTS

1. POPULATION			
Table	Title	Year	Page
Table 1a	Trend in birth and fertility rates	2000 to 2018	7
Table 1b	Trend in maternities, live and stillbirth rates	2004 to 2018	8
Table 1c	Trend in life expectancy at birth	1998-00 to 2016-18	9
Table 1d	Life expectancy at birth by gender	2016-18	10
Table 1e	Estimated resident population by 5-year age group and gender	2018	11
Table 1f	GP registered population by 5-year age group and gender	2020	12
Table 1g	Estimated resident population by age group and ward	2018	13
Table 1h	Trend in estimated resident population by age group (persons)	1996 to 2018	14
Table 1i	Resident population projections by age group (persons)	2020 to 2040	15

2. CHILDREN AND YOUNG PEOPLE			
Table 2a	Trend in low birth weight babies	2001 to 2017	16
Table 2b	Uptake of childhood immunisations	2017/18 and 2018/19	17
Table 2c	A&E attendances for injuries in children aged 0-4	2015/16 – 2018/19	18
Table 2d	School readiness	2018/19	19
Table 2e	Trend in hospital tooth extractions due to decay for children aged 10 and under	2011/12 – 2018/19	20
Table 2f	Weight status of primary school children	2018/19	21
Table 2g	Number of children with special education needs (SEN) known to schools	2017 to 2019	22
Table 2h	Educational attainment at key stage 4	2018 and 2019	22
Table 2i	Young people not in education, employment, or training (NEET)	2020	23
Table 2j	Children looked after	2019	24
Table 2k	Child poverty	2014/15 to 2018/19	25
Table 2l	Trend in teenage conceptions	1999-01 to 2016-18	26

3. HEALTH AND WELLBEING			
Table 3a	Trend in breastfeeding rates	2008/09 – 2018/19	27
Table 3b	Trend in maternal smoking at the time of delivery	2010/11 – 2018/19	28
Table 3c	Estimated prevalence of overweight and obesity by age and gender	2017	29
Table 3d	Estimated prevalence of overweight and obesity by ward and gender	2017	30
Table 3e	Trend in proportion of smokers quitting after four weeks	2000/01 – 2018/19	31
Table 3f	Indicators of alcohol-related harm	2018-19	32
Table 3g	Alcohol-related A&E attendances	2016/17 – 2018/19	32
Table 3h	Hospital admission rates for alcohol related conditions	2018/19	33
Table 3i	Trend in successful drug and alcohol treatment	2010 to 2018	34
Table 3j	Population wellbeing	2018/19	35
Table 3k	Activity levels per week	2015/16 – 2019/20	36
Table 3l	Legal abortion rates by age of women	2017 and 2018	37
Table 3m	Trend in prevalence of HIV and AIDS	2011 to 2018	38
Table 3n	NHS Health Check uptake	2018/19	39
Table 3o	Trend in coverage of NHS cervical screening programme: women aged 25-49 and 50-64 years	2014/15 – 2018/19	40
Table 3p	Trend in coverage of NHS breast cancer screening programme: women aged 53-70 years	2014/15 – 2018/19	41
Table 3q	Uptake of older people vaccinations	2017/18 and 2018/19	41
Table 3r	Number of people with a learning disability known to GPs	2016/17 – 2018/19	42
Table 3s	Number of carers known to Department of Adult Social Services (DASS)	2019	42
Table 3t	Trend in hospital admissions for mental health conditions in young people	2014/15 - 2018/19	43
Table 3u	Trend in hospital admissions as a result of self-harm	2014/15 - 2018/19	43
Table 3v	Incidence of the most common cancers by gender	2017	44
Table 3w	GP held disease register prevalence rates by Wirral and England	2018/19	45
Table 3x	GP held disease register prevalence rates by Primary Care Network (PCN)	2018/19	46
Table 3y	Emergency admissions in Wirral residents aged over 50 years	2015/16 – 2017/18 and 2016/17 – 2018/19	47

4. MORTALITY			
Table 4a	Infant mortality rates	2016-18	48
Table 4b	Trend in infant mortality	2001-03 to 2016-18	49
Table 4c	Alcohol specific mortality by all ages	2016-18	50
Table 4d	Premature mortality by causes considered preventable	2016-18	51
Table 4e	Standardised mortality ratios (SMRs) by broad cause of death	2016-18	52
Table 4f	Trend in mortality from all causes of death by gender and Wirral, North West and England	2007 to 2018	53
Table 4g	Mortality from all causes of death by ward	2016-18	54
Table 4h	Places of death in Wirral	2018	55

5. ECONOMY AND BUSINESS			
Table 5a	Trend in average personal income by gender	2009 to 2019	56
Table 5b	Average household income	2016	57
Table 5c	Claimant count: number and percentage by gender	2020	58
Table 5d	Employment and support allowance: number of claimants by condition	2019	59
Table 5e	Breakdown of employee jobs by industry	2018	60
Table 5f	Employment by occupation	2019	61
Table 5g	Business start-up and survival rates	2013 to 2018	62
Table 5h	Trend in job density	2000 to 2018	63
Table 5i	Public and private sector employment rates	2016 to 2018	64
Table 5j	Indicators of gross value added (GVA)	2016 to 2018	64
Table 5k	Indicators of tourism to the local economy	2009 to 2018	65

6. TRANSPORT, HOUSING AND THE ENVIRONMENT			
Table 6a	Trend in new dwellings	2011/12 – 2018/19	66
Table 6b	Housing projections	2019 to 2039	66
Table 6c	Households with no access to a vehicle	2011	67
Table 6d	Proportion of people aged 65 and over living alone	2011	68
Table 6e	Deprivation by ward	2019	69
Table 6f	Fuel poverty	2018	70
Table 6g	Trend in median housing affordability ratio	2008 to 2019	71
Table 6h	Road collision casualties	2017-19	72
Table 6i	Carbon dioxide (CO ₂) emission estimates	2005 to 2017	73
Table 6j	Average annual air pollution by monitoring station	2015 to 2020	74

7. CRIME AND SAFETY			
Table 7a	Total recorded crime types	2019	75
Table 7b	Trend in domestic abuse rates	2010/11 – 2018/19	76

8. APPENDICES			
Table 8a	List of international classification of disease (ICD) codes for causes of death included in compendium	2015	77
Map 8a	Index of multiple deprivation 2019 scores	2019	78
Map 8b	Wirral ward boundaries with constituencies	2004	79
Map 8c	Wirral GP practices by locality and neighbourhood	2018	80

SECTION 1: POPULATION

TABLE 1a

TREND IN BIRTH AND FERTILITY RATES, WIRRAL AND ENGLAND, 2000 TO 2018

Year	Number of Live Births	Live Birth Rate	General Fertility Rate	
			Wirral	England
2000	3,438	10.9	53.0	55.9
2001	3,308	10.5	53.8	54.8
2002	3,270	10.4	53.3	54.7
2003	3,503	11.2	57.3	56.7
2004	3,521	11.2	57.9	58.0
2005	3,591	11.5	59.4	58.0
2006	3,575	11.5	59.8	59.7
2007	3,688	11.9	62.3	61.3
2008	3,787	12.2	65.0	62.8
2009	3,645	11.8	64.1	62.6
2010	3,771	12.2	67.3	64.1
2011	3,802	11.9	65.0	64.2
2012	3,816	11.9	66.0	64.9
2013	3,560	11.1	62.3	62.4
2014	3,536	11.0	62.7	62.2
2015	3,563	11.1	63.9	62.5
2016	3,434	10.7	62.6	62.5
2017	3,366	10.4	61.7	61.2
2018	3,242	10.0	60.2	59.7

Notes and Definitions

1. Live Birth Rate: Number of live births per 1,000 mid-year residents
2. General Fertility Rate: Number of live births per 1,000 women aged 15-44 years

Source: Office for National Statistics ([ONS](#))

SECTION 1: POPULATION

TABLE 1b

MATERNITIES, LIVE AND STILLBIRTH RATES, WIRRAL, 2004 TO 2018

Year	Number of Maternities	Live Births			Stillbirths	
		Number of Live Births	Rate Per 1,000		Number of Stillbirths	Stillbirth Rate
			Crude Rate	GFR		
2004	3,465	3,521	11.2	57.9	18	5.1
2005	3,548	3,591	11.5	59.4	19	5.3
2006	3,537	3,575	11.5	59.8	20	5.6
2007	3,664	3,688	11.9	62.3	23	6.2
2008	3,738	3,787	12.2	65.0	15	3.9
2009	3,628	3,645	11.8	64.1	20	5.5
2010	3,743	3,771	12.2	67.3	33	8.8
2011	3,744	3,802	11.9	65.0	20	5.2
2012	3,789	3,816	11.9	66.0	17	4.4
2013	3,525	3,560	11.1	62.3	18	5.1
2014	3,513	3,536	11.0	62.7	19	5.3
2015	3,531	3,563	11.1	63.9	16	4.5
2016	3,390	3,434	10.7	62.6	16	4.7
2017	3,330	3,366	10.4	61.7	9	2.7
2018	3,252	3,242	10.0	60.2	13	4.0

Notes and Definitions

1. Maternities: A maternity may result in one or more live or stillborn babies
2. Crude Rate: Number of live births per 1,000 residents
3. General Fertility Rate (GFR): Live births per 1,000 women aged 15-44
4. Stillbirth Rate: Stillbirths are legally defined as foetal deaths occurring after 24 weeks of gestation. The stillbirth rate is the number of stillbirths per 1,000 total live and stillbirths
5. The number of maternities column has been retrospectively updated. For this reason, previous versions of the Wirral Statistical Compendium may have different figures to those shown above

Source: Office for National Statistics ([ONS](#))

SECTION 1: POPULATION

TABLE 1c

TREND IN LIFE EXPECTANCY AT BIRTH, WITH 95% CONFIDENCE LIMITS, WIRRAL, 1998-2000 TO 2016-2018

Time Period	Males			Females		
	Life Expectancy (Years)	95% Confidence Intervals		Life Expectancy (Years)	95% Confidence Intervals	
		Lower Limit	Upper Limit		Lower Limit	Upper Limit
1998-00	73.9	73.5	74.3	79.2	78.8	79.6
1999-01	74.3	73.9	74.7	79.7	79.3	80.0
2000-02	74.9	74.5	75.3	79.9	79.6	80.3
2001-03	75.2	74.8	75.6	80.0	79.6	80.3
2002-04	75.4	75.0	75.8	80.2	79.8	80.5
2003-05	75.5	75.1	76.0	80.3	79.9	80.6
2004-06	75.8	75.4	76.2	80.7	80.4	81.1
2005-07	75.9	75.5	76.3	80.9	80.5	81.2
2006-08	76.1	75.7	76.5	80.9	80.6	81.3
2007-09	76.5	76.1	76.9	80.9	80.5	81.3
2008-10	77.2	76.9	77.6	80.9	80.5	81.2
2009-11	77.5	77.1	77.9	81.5	81.2	81.9
2010-12	77.8	77.4	78.2	81.8	81.4	82.2
2011-13	77.7	77.4	78.1	82.3	81.9	82.6
2012-14	78.0	77.6	78.3	82.1	81.8	82.4
2013-15	77.9	77.6	78.3	81.9	81.6	82.2
2014-16	78.1	77.7	78.5	81.6	81.3	82.0
2015-17	78.3	77.9	78.6	81.8	81.4	82.1
2016-18	78.2	77.8	78.6	82.0	81.7	82.4

Notes and Definitions

1. Life expectancy at birth indicates the number of years a baby born in an area can expect to live if they experience current age and gender specific death rates throughout their life. It is not a guide to the remaining expectation of life at a later age (e.g. if life expectancy at birth in a particular area is 80 years, it does not follow that people aged 70 living in that area can expect to live for a further 10 years)
2. Data is presented as 3 calendar year rolling figures. Data was produced by aggregating deaths and population estimates for each three-year period (e.g. 1998-2000 etc.)
3. 95% Confidence Intervals (CIs) indicate the range within which the true value of the indicator has a 95% chance of falling. For example, a 95% CI of 77.9 to 78.6 means that we can be 95% certain the true value lies somewhere between these two values
4. Periodically, the Office for National Statistics (ONS) revises subnational population estimates. Therefore, life expectancy figures for England and local authorities in England are also then revised accordingly. For this reason, previous versions of the Wirral Statistical Compendium may have different figures to those shown above

Source: Office for National Statistics ([ONS](#))

SECTION 1: POPULATION

TABLE 1d

LIFE EXPECTANCY IN YEARS AT BIRTH BY WARDS AND GENDER, 2016-18

Area	Males			Females			Persons		
	Life Expectancy	95% CIs		Life Expectancy	95% CIs		Life Expectancy	95% CIs	
		LCL	UCL		LCL	UCL		LCL	UCL
Bebington	79.9	78.2	81.6	83.9	82.3	85.5	82.1	80.9	83.2
Bidston & St James	72.9	71.1	74.7	77.7	76.3	79.1	75.4	74.2	76.5
Birkenhead & Tranmere	73.4	71.5	75.4	78.5	76.7	80.3	75.8	74.5	77.1
Bromborough	78.2	76.7	79.7	80.4	78.9	81.9	79.4	78.3	80.4
Clatterbridge	80.2	79.0	81.4	81.5	79.8	83.1	80.9	79.9	81.9
Cloughton	77.4	75.7	79.2	81.6	79.4	83.7	79.6	78.3	81.0
Eastham	79.1	77.3	80.9	85.7	84.1	87.4	82.4	81.1	83.7
Greasby, Frankby & Irby	83.8	82.2	85.4	85.8	84.1	87.6	84.9	83.7	86.1
Heswall	84.3	82.7	85.9	86.0	84.5	87.6	85.2	84.1	86.3
Hoylake & Meols	80.7	79.1	82.4	84.0	82.5	85.5	82.4	81.3	83.6
Leasowe & Moreton East	77.1	75.2	79.0	80.3	78.8	81.8	78.8	77.5	80.0
Liscard	76.7	75.0	78.4	80.3	78.9	81.8	78.5	77.4	79.7
Moreton West & Saughall Massie	81.1	79.2	82.9	83.6	81.9	85.4	82.4	81.1	83.7
New Brighton	77.7	76.0	79.5	81.1	79.5	82.7	79.3	78.1	80.5
Oxton	77.8	76.2	79.5	81.4	80.3	82.6	79.6	78.6	80.6
Pensby & Thingwall	82.2	80.9	83.4	88.0	86.7	89.2	85.0	84.1	85.9
Prenton	81.0	79.3	82.7	83.0	81.4	84.6	82.1	80.9	83.3
Rock Ferry	72.2	70.3	74.1	77.3	75.4	79.1	74.6	73.3	76.0
Seacombe	73.1	71.4	74.8	80.1	78.2	82.0	76.3	75.1	77.6
Upton	76.9	75.5	78.3	80.1	78.4	81.7	78.5	77.4	79.6
Wallasey	80.1	78.0	82.3	87.5	85.8	89.3	83.8	82.4	85.2
West Kirby & Thurstaston	81.4	79.3	83.5	84.5	82.9	86.0	82.9	81.6	84.3
Wirral	78.3	77.9	78.7	82.1	81.7	82.4	80.2	80.0	80.5

Notes and Definitions

1. CI, LCL and UCL are acronyms for Confidence Intervals, Lower Confidence Limit and Upper Confidence Limit

Source: Office for National Statistics ([ONS](https://www.ons.gov.uk))

SECTION 1: POPULATION

TABLE 1e

ESTIMATED RESIDENT POPULATION BY 5-YEAR AGE GROUP AND GENDER,
WIRRAL, MID-2018

Age Group	Males		Females		Persons	
	Number	%	Number	%	Number	%
0-4	9,390	2.9	8,661	2.7	18,051	5.6
5-9	10,055	3.1	9,667	3.0	19,722	6.1
10-14	9,769	3.0	9,282	2.9	19,051	5.9
15-19	8,920	2.8	8,398	2.6	17,318	5.4
20-24	8,233	2.5	7,573	2.3	15,806	4.9
25-29	9,194	2.8	9,339	2.9	18,533	5.7
30-34	9,041	2.8	9,916	3.1	18,957	5.9
35-39	9,038	2.8	9,590	3.0	18,628	5.8
40-44	8,477	2.6	9,455	2.9	17,932	5.5
45-49	10,637	3.3	11,420	3.5	22,057	6.8
50-54	11,306	3.5	12,495	3.9	23,801	7.4
55-59	11,273	3.5	12,014	3.7	23,287	7.2
60-64	9,747	3.0	10,534	3.3	20,281	6.3
65-69	9,452	2.9	10,029	3.1	19,481	6.0
70-74	8,767	2.7	9,552	3.0	18,319	5.7
75-79	5,763	1.8	7,192	2.2	12,955	4.0
80-84	4,017	1.2	5,512	1.7	9,529	2.9
85-89	2,374	0.7	3,731	1.2	6,105	1.9
90+	1,054	0.3	2,368	0.7	3,422	1.1
All Ages	156,507	48.4	166,728	51.6	323,235	100.0

Notes and Definitions

1. The table shows the estimated resident population at mid-year 2018 for Wirral
2. ONS recommend that population estimates should be rounded to the nearest one hundred persons. The figures presented in the above table are not rounded to the nearest 100 to allow further calculations. Consequently, as these are estimates, they may not be 100% accurate at this level of detail

Source: Office for National Statistics ([ONS](#))

SECTION 1: POPULATION

TABLE 1f

GP REGISTERED POPULATION BY 5-YEAR AGE GROUP AND GENDER,
WIRRAL, 2020

Age Groups	Males		Females		Persons	
	Number	%	Number	%	Number	%
0-4	8,795	2.6	8,141	2.4	16,936	5.0
5-9	10,098	3.0	9,489	2.8	19,587	5.8
10-14	10,121	3.0	9,594	2.8	19,715	5.8
15-19	9,122	2.7	8,655	2.6	17,777	5.3
20-24	8,864	2.6	8,342	2.5	17,206	5.1
25-29	10,306	3.0	10,092	3.0	20,398	6.0
30-34	10,870	3.2	10,903	3.2	21,773	6.4
35-39	10,585	3.1	10,498	3.1	21,083	6.2
40-44	9,714	2.9	9,820	2.9	19,534	5.8
45-49	10,902	3.2	11,101	3.3	22,003	6.5
50-54	12,091	3.6	12,151	3.6	24,242	7.2
55-59	12,419	3.7	12,524	3.7	24,943	7.4
60-64	10,820	3.2	10,925	3.2	21,745	6.4
65-69	9,453	2.8	10,083	3.0	19,536	5.8
70-74	9,194	2.7	9,815	2.9	19,009	5.6
75-79	6,217	1.8	7,282	2.2	13,499	4.0
80-84	4,251	1.3	5,629	1.7	9,880	2.9
85-89	2,348	0.7	3,699	1.1	6,047	1.8
90+	1,112	0.3	2,394	0.7	3,506	1.0
All Ages	167,282	49.4	171,137	50.6	338,419	100.0

Notes and Definitions

1. Figures are based on the patient lists of GP practices in Wirral
2. The data presented is a quarterly snapshot from the GP Payments system maintained by NHS Digital. This release was extracted on 16th April 2020
3. The differences between ONS populations (resident, shown in Table 1e) and GP populations (registered, shown in this table) is a national issue due to several factors, such as patients not informing their GP when they leave an area or people who live somewhere else for most of the year (e.g. students, retirees living abroad)

Source: [NHS Digital](#)

SECTION 1: POPULATION

TABLE 1g

ESTIMATED RESIDENT POPULATION BY AGE GROUP, WARDS AND CONSTITUENCIES, MID-2018

Area	Total Population	Under 15	15-44	45-64	65-84	85+
Bebington	15,701	2,803	5,008	4,491	2,922	477
Bidston & St James	15,935	3,617	6,155	3,886	2,050	227
Birkenhead & Tranmere	16,718	3,697	7,010	4,157	1,639	215
Bromborough	15,928	2,887	5,830	4,341	2,501	369
Clatterbridge	14,215	2,080	4,049	3,906	3,683	497
Cloughton	14,427	2,198	4,766	4,185	2,785	493
Eastham	14,143	2,412	4,473	3,908	2,897	453
Greasby, Frankby & Irby	13,777	2,030	3,702	4,092	3,394	559
Heswall	13,208	1,846	3,142	3,851	3,682	687
Hoylake & Meols	13,326	2,064	3,851	3,951	2,805	655
Leasowe & Moreton East	14,825	3,023	5,187	3,934	2,397	284
Liscard	16,120	2,968	5,852	4,364	2,567	369
Moreton West & Saughall Massie	13,968	2,170	4,521	3,991	2,924	362
New Brighton	15,067	2,310	5,157	4,430	2,722	448
Oxton	14,003	2,095	4,696	3,927	2,904	381
Pensby & Thingwall	13,053	1,997	3,656	3,704	3,207	489
Prenton	14,645	2,576	4,828	4,256	2,577	408
Rock Ferry	14,484	3,008	5,650	3,643	1,921	262
Seacombe	15,549	3,507	6,220	3,773	1,829	220
Upton	16,737	3,223	5,605	4,354	2,957	598
Wallasey	14,665	2,269	4,467	4,504	2,876	549
West Kirby & Thurstaston	12,741	2,044	3,349	3,778	3,045	525
Birkenhead Constituency	90,212	17,191	33,105	24,054	13,876	1,986
Wallasey Constituency	90,194	16,247	31,404	24,996	15,315	2,232
Wirral South Constituency	73,195	12,028	22,502	20,497	15,685	2,483
Wirral West Constituency	69,634	11,358	20,163	19,879	15,408	2,826
Wirral	323,235	56,824	107,174	89,426	60,284	9,527

Notes and Definitions

1. These are estimated figures and are not guaranteed to be 100% accurate at this level of detail

Source: Office for National Statistics ([ONS](#))

SECTION 1: POPULATION

TABLE 1h

TREND IN ESTIMATED RESIDENT POPULATION BY AGE GROUP (PERSONS),
WIRRAL, MID-1996 TO MID-2018

Mid-Year	Population (thousands)						All Ages
	Under 20	20-49	50-64	65-74	75-84	85+	
1996	83.0	128.4	53.7	31.2	19.6	6.8	322.7
1997	82.4	125.5	54.9	30.9	19.7	6.9	320.4
1998	82.1	123.1	56.1	30.4	19.7	7.1	318.6
1999	81.9	120.9	57.0	30.4	19.7	7.1	317.0
2000	81.4	120.0	57.9	30.2	19.8	7.1	316.5
2001	81.0	118.4	58.4	30.1	19.9	7.0	314.8
2002	80.4	118.2	59.2	29.9	20.3	7.1	315.1
2003	79.9	118.0	59.8	29.9	20.8	6.9	315.3
2004	79.2	118.0	60.3	29.7	21.0	6.9	315.1
2005	78.3	118.3	60.4	29.5	21.1	7.2	314.8
2006	77.8	118.6	61.0	29.4	20.9	7.6	315.3
2007	77.2	118.6	61.5	29.5	21.1	7.9	315.8
2008	76.9	118.8	62.2	30.0	21.0	8.0	316.9
2009	76.4	119.0	62.8	30.4	21.2	8.1	317.9
2010	75.9	119.1	63.6	31.1	21.3	8.2	319.2
2011	75.2	118.9	64.4	31.6	21.4	8.5	320.0
2012	74.9	118.0	64.1	33.3	21.5	8.6	320.4
2013	74.6	116.9	64.4	34.4	21.6	8.7	320.6
2014	74.8	115.8	65.0	35.4	21.6	9.0	321.6
2015	74.5	114.6	65.6	36.1	21.9	9.1	321.8
2016	74.5	113.6	66.1	36.9	21.8	9.3	322.2
2017	74.3	112.9	66.9	37.3	22.0	9.5	322.9
2018	74.1	111.9	67.4	37.8	22.5	9.5	323.2

Notes and Definitions

1. The population estimates given are ONS resident population estimates for mid-1996 to mid-2018
2. The estimated resident population of an area includes all people who usually live there, whatever their nationality. Wherever possible, members of Armed Forces in England and Wales are included in the district in which they are stationed. Armed Forces stationed outside of England and Wales are not included. Students are taken to be resident at their term time address
3. These population estimates are presented in thousands and have been rounded to the nearest hundred for presentation purposes. Figures for individual age groups may not add up to the total figure as a result of rounding
4. Estimates from 2001 onwards have been retrospectively updated. Therefore, figures from previous editions of the Compendium are not comparable

Source: [NOMIS](#)

SECTION 1: POPULATION

TABLE 1i

RESIDENT POPULATION PROJECTIONS BY AGE GROUP (PERSONS), WIRRAL,
MID-2020 TO MID-2040

Age Group	Populations (thousand)					% Change 2020-2040
	2020	2025	2030	2035	2040	
0-4	17.3	16.3	16.2	16.3	16.9	-2.5%
5-9	19.7	18.0	17.1	16.9	17.1	-13.2%
10-14	19.6	20.2	18.6	17.6	17.5	-11.0%
15-19	17.0	18.7	19.2	17.6	16.8	-1.0%
20-24	15.3	14.0	15.5	16.2	15.1	-1.0%
25-29	18.3	17.2	16.0	17.8	18.6	1.8%
30-34	19.3	19.0	17.8	16.6	18.6	-3.6%
35-39	18.9	20.2	20.0	18.7	17.6	-7.0%
40-44	18.2	19.7	20.9	20.8	19.5	6.9%
45-49	20.6	18.7	20.1	21.4	21.3	3.7%
50-54	23.1	20.9	19.0	20.6	21.9	-5.5%
55-59	24.2	23.3	21.1	19.3	20.9	-13.7%
60-64	21.3	24.1	23.3	21.2	19.5	-8.4%
65-69	19.2	20.7	23.5	22.8	20.8	8.3%
70-74	19.1	18.1	19.6	22.3	21.8	13.8%
75-79	13.7	17.0	16.1	17.6	20.3	48.1%
80-84	9.9	11.0	13.8	13.2	14.7	48.0%
85-89	6.2	6.7	7.5	9.5	9.4	52.0%
90+	3.6	3.9	4.3	5.0	6.4	78.2%
All ages	324.5	327.4	329.6	331.7	334.5	3.1%

Notes and Definitions

1. The latest subnational population projections are based on the 2018 mid-year population estimates and project forward the population from 2020 to 2040. Previous editions of the Compendium which showed projections based on the 2016 mid-year population estimates are therefore not comparable with this table
2. ONS population estimates are presented in thousands and have been rounded to the nearest hundred for presentation purposes. Figures for individual age groups may not add up to the total figure due to rounding
3. The projections are trend-based projections, which mean assumptions for future levels of births, deaths and migration are based on observed levels
4. Percentage change is proportional to the population sizes e.g. the 0-4 age group in 2020 is 17.3 and for 2040 it is 16.9. The actual difference of -400 people equates to a -2.5% reduction

Source: Office for National Statistics ([ONS](#))

SECTION 2: CHILDREN AND YOUNG PEOPLE

TABLE 2a

TRENDS IN LOW BIRTH WEIGHT BABIES, WITH 95% CONFIDENCE LIMITS, WIRRAL AND ENGLAND, 2001 TO 2017

Year	Wirral				England			
	Total Number of Births <2500g	% Of All Births	95% Confidence Intervals		Total Number of Births <2500g	% Of All Births	95% Confidence Intervals	
			Lower Limit	Upper Limit			Lower Limit	Upper Limit
2001	237	7.1	6.3	8.1	45,083	7.9	7.9	8.0
2002	226	6.9	6.1	7.8	45,918	7.9	7.8	7.9
2003	281	8.0	7.1	8.9	47,576	8.0	7.9	8.1
2004	230	6.5	5.8	7.4	48,594	7.9	7.9	8.0
2005	252	7.0	6.2	7.9	51,046	7.9	7.8	8.0
2006	269	7.5	6.7	8.4	52,487	7.9	7.8	7.9
2007	276	7.4	6.6	8.3	51,577	7.5	7.5	7.6
2008	284	7.5	6.7	8.4	52,954	7.5	7.4	7.6
2009	194	5.3	4.5	6.1	50,289	7.1	7.1	7.2
2010	253	6.7	5.9	7.5	50,035	7.3	7.3	7.4
2011	254	6.6	5.9	7.5	50,726	7.4	7.3	7.5
2012	233	6.1	5.4	6.9	50,516	7.3	7.2	7.4
2013	281	7.9	7.0	8.8	48,657	7.4	7.3	7.4
2014	254	7.2	6.3	8.0	48,284	7.4	7.3	7.4
2015	261	7.3	6.5	8.2	48,442	7.4	7.3	7.4
2016	293	8.5	7.6	9.5	48,112	7.3	7.3	7.4
2017	234	6.9	6.1	7.8	46,902	7.4	7.3	7.4

Notes and Definitions

1. Low birth weight babies defined as live and stillborn infants with a stated birth weight of less than 2,500 grams (approximately 5lb 8oz). Numbers exclude births with no weight recorded
2. Confidence intervals (CIs) indicate the range within which the true value of the indicator has a 95% chance of falling. For example, a 95% CI of 6.1 to 7.8, for Wirral in 2017, means that we can be 95% certain the true value lies somewhere between these two values
3. Confidence intervals are much wider with small sample sizes, hence the difference in the upper and lower limits between Wirral and England

Source: *Child and Maternal Health Profiles*, [Public Health England \(PHE\)](#)

SECTION 2: CHILDREN AND YOUNG PEOPLE

TABLE 2b

UPTAKE OF CHILDHOOD IMMUNISATIONS BY AREA, 2017/18 AND 2018/19

Immunisation	2017/18			2018/19		
	Wirral CCG	North West	England	Wirral CCG	North West	England
DTaP/IPV/Hib (Diphtheria, Tetanus, Pertussis, Polio, Haemophilus Influenza B) %	97.2	95.7	95.1	97.3	94.5	94.2
Meningitis C / Hib Booster %	94.6	93.1	91.2	94.7	92.8	90.4
Pneumococcal (PCV) Booster %	97.5	92.7	91.0	95.0	92.1	90.2
MMR (1 dose – 2 years old) %	94.7	92.9	91.2	94.5	92.4	90.3
MMR (1 dose – 5 years old) %	98.1	95.9	94.9	97.9	95.3	94.5
MMR (2 doses – 5 years old) %	93.8	89.4	87.2	92.8	88.9	86.4
HPV (1 dose) %	89.0	87.2	86.9	90.5	88.6	88.0
HPV (2 doses) %	86.9	83.6	83.8	82.8	85.8	83.9

Notes and Definitions

- All of the above immunisations, with the exception of HPV (Human Papillomavirus), relate to children immunised by the age of two unless stated otherwise in the table. The HPV vaccination is offered to girls aged 12-13 years old
- Children are routinely scheduled for their primary immunisations against each of the following diseases: Diphtheria, Tetanus, Pertussis (Whooping Cough), Polio, Haemophilus Influenza B (Hib). These are given in a series of immunisations from the age of 2 months. A single dose of MMR (Measles, Mumps and Rubella) is offered from 13 months of age with a second one available any time until a child's 5th birthday
- The PCV vaccine protects against pneumococcal infections that can cause pneumonia, septicaemia or meningitis. A child can receive this vaccine any time before their 1st birthday
- Immunisation rates are a combined figure for Diphtheria, Tetanus, Polio, Pertussis, and Hib. Figures for individual vaccinations are not available
- Information relates to all those registered with a GP whose practice forms part of the CCG (Clinical Commissioning Group) regardless of where that person is resident, plus any people not registered with a GP but who are resident within the geographic boundary of the CCG
- Please see the [Routine Immunisation Schedule](#) for the UK for a full breakdown of childhood immunisations

Source: Public Health Outcomes Framework, [Public Health England \(PHE\)](#)

SECTION 2: CHILDREN AND YOUNG PEOPLE

TABLE 2c

A&E ATTENDANCES FOR INJURIES IN CHILDREN AGED 0-4, BY INJURY TYPE, WIRRAL, 2015/16 - 2018/19

Injury	2015/16		2016/17		2017/18		2018/19	
	Number	%	Number	%	Number	%	Number	%
Bite	24	0.7	21	0.7	26	0.9	20	0.7
Burn/scald	86	2.7	71	2.5	84	3.0	89	3.1
Fall	1,401	43.3	1,236	43.2	1,255	45.3	1,343	46.2
Ingestion	93	2.9	63	2.2	85	3.1	86	3.0
Road Traffic Accident (RTA)	128	4.0	130	4.5	81	2.9	93	3.2
Struck	370	11.4	318	11.1	390	14.1	344	11.8
Wound/cut	251	7.8	250	8.7	226	8.2	229	7.9
Other	884	27.3	775	27.1	621	22.4	701	24.1
Total	3,237	100.0	2,864	100.0	2,768	100.0	2,905	100.0

Notes and Definitions

1. The table shows injury groups of trauma attendances for 0 to 4-year-old children who attended Arrowe Park Hospital Accident and Emergency department over 4 financial years
2. The 'Struck' category does not necessarily mean struck by another child/person, it could for example, include being struck by an object
3. The 'Other' category includes categories such as 'Assault', 'Electrical', 'Firework' and 'Inhalation'. However, due to small numbers, these categories have been combined as 'Other' to avoid suppression of figures
4. Figures are Arrowe Park A&E attendances not admissions (which are a much smaller figure). Children can have more than 1 attendance for the same injury type in the same year which means these children would be double counted to produce these figures

Source: Trauma & Injury Intelligence Group ([TIIG](#)), Centre for Public Health, Liverpool John Moores University

SECTION 2: CHILDREN AND YOUNG PEOPLE

TABLE 2d

SCHOOL READINESS, ALL CHILDREN AND CHILDREN IN RECEIPT OF FREE SCHOOL MEALS (FSM), BY AREA, 2018/19

Indicator	Wirral			North West			England		
	%	95% Confidence Intervals		%	95% Confidence Intervals		%	95% Confidence Intervals	
		Lower Limit	Upper Limit		Lower Limit	Upper Limit		Lower Limit	Upper Limit
All Children (age 5) achieving a good level of development at the end of Reception	69.3	67.8	70.8	68.9	68.6	69.2	71.8	71.7	71.9
Children (age 5) with FSM achieving a good level of development at the end of Reception	50.0	46.2	53.8	54.4	53.6	55.3	56.5	56.2	56.9
All Year 1 pupils (age 6) achieving the expected level in the phonics screening check	81.9	80.6	83.1	80.9	80.6	81.1	81.8	81.7	81.9
Year 1 pupils (age 6) with FSM achieving the expected level in the phonics screening check	73.0	69.9	75.8	69.8	69.1	70.5	70.1	69.8	70.3

Notes and Definitions

1. Children are defined as having reached a good level of development if they achieve at least the expected level in the early learning goals in the prime areas of learning (personal, social and emotional development; physical development; and communication and language) and the early learning goals in the specific areas of mathematics and literacy
2. Year 1 pupils achieving the expected level in the phonics screening check were deemed to have met the required standard if they scored 32 or more out of a possible 40
3. Percentages were calculated using all eligible children in their local authority or all eligible children in receipt of Free School Meals in their local authority as the denominator
4. Confidence Intervals (CIs) indicate the range within which the true value of the indicator has a 95% chance of falling. For example, a 95% CI of 67.8 to 70.8, for all children achieving a good level of development at the end of Reception in Wirral for 2018/19, means that we can be 95% certain the true value lies somewhere between these two values

Source: *Child and Maternal Health Profiles*, [Public Health England \(PHE\)](#)

SECTION 2: CHILDREN AND YOUNG PEOPLE

TABLE 2e

TREND IN HOSPITAL TOOTH EXTRACTIONS DUE TO DECAY FOR CHILDREN, AGED 10 YEARS AND UNDER, RATE PER 100,000, BY AREA, 2011/12 - 2018/19

Year	Wirral			North West			England		
	Rate	Lower 95% CI	Higher 95% CI	Rate	Lower 95% CI	Higher 95% CI	Rate	Lower 95% CI	Higher 95% CI
2011/12	42.7	24.9	68.3	791.9	773.6	810.4	456.9	451.8	461.9
2012/13	44.3	26.3	70.1	752.8	735.2	770.7	455.1	450.2	460.1
2013/14	95.2	67.7	130.1	770.8	753.1	788.8	467.8	462.8	472.8
2014/15	86.7	60.7	120.0	714.7	697.7	731.9	473.0	468.0	478.0
2015/16	83.8	58.4	116.5	635.9	620.0	652.0	435.2	430.5	440.0
2016/17	109.1	79.9	145.5	664.7	648.6	681.1	431.8	427.1	436.5
2017/18	73.7	50.1	104.6	699.8	683.3	716.6	424.6	420.0	429.3
2018/19	110.3	80.8	147.2	656.6	640.6	672.8	409.4	404.9	414.0

Notes and Definitions

1. Wirral figures include children who reside in Wirral but may have had extractions in hospitals outside of the area e.g. Alder Hey Children's Hospital NHS Foundation Trust
2. Confidence Intervals (CIs) indicate the range within which the true value of the indicator has a 95% chance of falling. For example, a 95% CI of 80.8 to 147.2, for Wirral in 2018/19, means that we can be 95% certain the true value lies somewhere between these two values
3. Confidence Intervals are much wider with small sample sizes, hence the difference in the upper and lower limits between Wirral and England
4. The NHS Outcomes Framework retrospectively updates their figures so this table may not be comparable with previous editions

Source: [NHS Outcomes Framework](#)

SECTION 2: CHILDREN AND YOUNG PEOPLE

TABLE 2f

WEIGHT STATUS OF PRIMARY SCHOOL CHILDREN (AGED 4/5 AND 10/11) BY AREA, 2018/19

Area	Reception Year (aged 4/5)					Year 6 (aged 10/11)				
	% with height and weight recorded	% under-weight	% healthy weight	% over-weight	% obese	% with height and weight recorded	% under-weight	% healthy weight	% over-weight	% obese
Wirral	98.9	0.4	75.6	13.8	10.2	96.5	1.0	65.0	15.2	18.9
North West	95.7	0.8	74.8	13.8	10.6	94.8	1.1	62.9	14.4	21.5
England	95.3	1.0	76.5	12.9	9.7	94.5	1.4	64.3	14.1	20.2

Notes and Definitions

1. Figures based on the percentage of primary school age children in their Reception Year (aged 4/5 years) and Year 6 (aged 10/11 years) in the school year 2018/19
2. [NICE guidelines](#) define children as overweight if their Body Mass Index (BMI) is more than, or equal to the 85th percentile but less than the 95th percentile. Children with a BMI over the 95th percentile are defined as obese (this means that they are heavier than 95% of other children of the same height, age and gender)
3. Percentages may not sum due to rounding

Source: National Child Measurement Programme (NCMP) and Child Obesity Profile, [Public Health England \(PHE\)](#)

SECTION 2: CHILDREN AND YOUNG PEOPLE

TABLE 2g

NUMBER OF CHILDREN WITH SPECIAL EDUCATIONAL NEEDS KNOWN TO SCHOOLS, BY AREA, 2017 TO 2019

Year	Wirral (Number)	Wirral (%)	North West (%)	England (%)
2017	8,858	17.1	14.4	14.4
2018	8,643	16.8	14.8	14.6
2019	9,207	17.8	15.2	14.9

Notes and Definitions

1. The values shown are the number of SEN pupils as a percentage of all pupils in all schools
2. This data includes all academies including free schools, state-funded and non-maintained special schools, middle schools as deemed, all-through schools, city technology colleges, university technology colleges, studio schools, direct grant nursery schools, pupil referral units and general hospital schools.
3. Due to availability of data, this indicator is not comparable with those published in previous versions of the compendium
4. Figures are recorded in January of each year

Source: [Department for Education \(DfE\)](#)

SECTION 2: CHILDREN AND YOUNG PEOPLE

TABLE 2h

EDUCATIONAL ATTAINMENT AT KEY STAGE 4 (GCSE), ALL CHILDREN AND CHILDREN IN RECEIPT OF FREE SCHOOL MEALS (FSM), BY AREA, 2018 AND 2019

Key Stage 4 / GCSE	2018			2019		
	Wirral	North West	England	Wirral	North West	England
Average Attainment 8 score - all pupils	48.8	45.7	44.5	48.4	45.5	44.7
Average Attainment 8 score - eligible for FSM	35.1	33.3	34.5	33.8	33.6	35.0
Average Attainment 8 score - not eligible for FSM	51.2	47.8	48.4	51.6	47.9	48.8

Notes and Definitions

1. In the new grading system introduced in 2016, Attainment 8 is used to judge school performance. This is a record of a student's average achievement over 8 subjects. For more information please visit the following website:
<https://www.gov.uk/government/publications/progress-8-school-performance-measure>
2. A higher Attainment 8 score indicates higher attainment

Source: Local Authority Interactive Tool ([LAIT](#)), Department for Education ([DfE](#))

SECTION 2: CHILDREN AND YOUNG PEOPLE

TABLE 2i

YOUNG PEOPLE (BY COHORT) NOT IN EDUCATION, EMPLOYMENT OR TRAINING (NEET), OR NOT KNOWN, BY AREA, 2020

Area	Cohort		All Cohorts	
	2018	2019	Number	%
Bebington	1.1%	2.5%	*	1.8%
Bidston & St James	9.5%	7.6%	33	8.5%
Birkenhead & Tranmere	9.9%	4.2%	27	6.9%
Bromborough	6.4%	1.7%	14	4.0%
Clatterbridge	2.7%	0.8%	*	1.8%
Cloughton	3.6%	5.1%	16	4.4%
Eastham	4.4%	3.1%	11	3.7%
Greasby, Frankby & Irby	0.9%	3.1%	*	2.1%
Heswall	0.7%	1.6%	*	1.1%
Hoylake & Meols	1.4%	0.8%	*	1.1%
Leasowe & Moreton East	8.6%	1.5%	17	4.7%
Liscard	3.2%	5.3%	17	4.3%
Moreton West & Saughall Massie	5.1%	2.9%	10	4.0%
New Brighton	6.1%	1.3%	11	3.7%
Oxton	4.0%	4.1%	10	4.1%
Pensby & Thingwall	5.0%	2.6%	*	3.7%
Prenton	4.1%	3.7%	13	3.9%
Rock Ferry	13.6%	4.4%	34	9.1%
Seacombe	7.4%	4.4%	21	5.9%
Upton	8.4%	3.2%	21	5.8%
Wallasey	3.3%	1.4%	*	2.4%
West Kirby & Thurstaston	1.6%	1.9%	*	1.7%
Birkenhead Constituency	7.8%	4.9%	133	6.4%
Wallasey Constituency	5.5%	3.0%	81	4.2%
Wirral South Constituency	3.1%	2.0%	39	2.5%
Wirral West Constituency	3.8%	2.4%	42	3.0%
Wirral	6.8%	3.8%	369	5.2%

Notes and Definitions

1. This data is accurate as of 7th April 2020
2. Both cohorts are based on a person's birthdate and then sectioned by the school year that they attended e.g. those in the 2018 cohort were born between the 01-09-2001 and 31-08-2002 school year whereas those in the 2019 were born between 01-09-2002 and 31-08-2003
3. The overall Wirral figure includes those with no known address so figures may not sum
4. Figures less than 10 have been suppressed for reasons of confidentiality (*)
5. The Children's & Young People's Department now only report on the last 2 years' worth of data rather than the last three years and so, due to these changes, this table cannot be compared with versions of the Compendium before 2019

Source: Children & Young People's Department, Wirral Council

SECTION 2: CHILDREN AND YOUNG PEOPLE

TABLE 2j

CHILDREN LOOKED AFTER, BY AREA, 2019

Area	Number	Rate per 10,000
Bebington	18	54.2
Bidston & St James	136	323.0
Birkenhead & Tranmere	139	326.4
Bromborough	34	100.8
Clatterbridge	*	*
Claughton	24	88.9
Eastham	19	66.4
Greasby, Frankby & Irby	*	*
Heswall	0	0.0
Hoyle & Meols	*	*
Leasowe & Moreton East	43	121.0
Liscard	51	143.7
Moreton West & Saughall Massie	12	46.3
New Brighton	18	64.3
Oxton	10	39.7
Pensby & Thingwall	*	*
Prenton	20	64.7
Rock Ferry	110	307.3
Seacombe	94	232.8
Upton	42	110.8
Wallasey	11	40.6
West Kirby & Thurstaston	13	52.4
Birkenhead Constituency	439	215.6
Wallasey Constituency	229	119.0
Wirral South Constituency	74	51.5
Wirral West Constituency	70	51.5
Wirral	**831	123.0
England	78,150	65.0

**This figure includes children originally from outside Wirral, who were placed in Wirral

Notes and Definitions

1. Children assigned to the Ward where their family was last resident prior to becoming looked after
2. Numbers for Wirral Wards with less than 10 cases have been suppressed for reasons of confidentiality (*)
3. Children Looked After is defined as children between the ages of 0 and 17 years who are in the care of the Local Authority
4. Rates calculated using Wirral ONS 2018 mid-year populations for children aged 0 to 17 years (per 10,000 population)

Source: Wirral Council Children & Young People's Team/DCSF Annual Statistical Return (SSDA903)

SECTION 2: CHILDREN AND YOUNG PEOPLE

TABLE 2k

CHILDREN AGED UNDER 16 IN RELATIVE LOW-INCOME FAMILIES (CHILD POVERTY) BY AREA, 2014/15 TO 2018/19

Area	2014/15	2015/16	2016/17	2017/18	2018/19
Bebington	7.8%	8.6%	8.8%	8.4%	10.8%
Bidston & St James	23.7%	25.1%	25.2%	28.1%	30.0%
Birkenhead & Tranmere	27.1%	29.5%	29.8%	32.1%	33.4%
Bromborough	14.6%	12.9%	14.0%	15.1%	16.9%
Clatterbridge	5.4%	7.0%	7.0%	6.8%	7.5%
Cloughton	13.2%	13.3%	15.2%	16.0%	18.3%
Eastham	9.4%	9.4%	11.2%	10.8%	12.5%
Greasby, Frankby & Irby	8.8%	7.7%	6.8%	7.9%	8.6%
Heswall	5.3%	5.1%	5.7%	5.2%	6.2%
Hoylake & Meols	6.2%	5.8%	5.3%	7.3%	8.3%
Leasowe & Moreton East	16.0%	17.4%	17.5%	20.2%	19.9%
Liscard	16.9%	16.3%	18.5%	21.4%	21.5%
Moreton West & Saughall Massie	13.0%	12.1%	11.5%	13.9%	13.4%
New Brighton	13.0%	13.4%	14.2%	17.6%	18.2%
Oxton	9.9%	10.0%	10.6%	9.3%	13.2%
Pensby & Thingwall	9.0%	8.2%	8.9%	10.3%	10.8%
Prenton	12.1%	12.5%	12.8%	14.0%	14.3%
Rock Ferry	20.7%	22.3%	24.2%	27.1%	28.1%
Seacombe	23.8%	23.5%	26.9%	28.4%	28.2%
Upton	14.5%	14.8%	16.4%	16.7%	18.1%
Wallasey	9.0%	9.6%	10.6%	10.0%	10.7%
West Kirby & Thurstaston	6.4%	7.7%	8.8%	8.5%	8.8%
Wirral	14.0%	14.5%	15.4%	16.7%	17.7%
North West	18.5%	19.2%	20.9%	22.5%	23.0%
England	15.5%	16.4%	17.1%	18.2%	18.4%

Notes and Definitions

1. Due to changes in methodology, this indicator is not comparable with those published in previous versions of the compendium
2. Relative low-income is defined as a family in low income Before Housing Costs (BHC) in the reference year. A family must have claimed one or more of Universal Credit, Tax Credits or Housing Benefit at any point in the year to be classed as low-income in these statistics
3. These are experimental statistics and so should be treated with caution

Source: Her Majesty's Revenue and Customs ([HMRC](#)) and [StatXplore](#)

SECTION 2: CHILDREN AND YOUNG PEOPLE

TABLE 2I

TREND IN TEENAGE CONCEPTIONS, BY AREA, 1999-2001 TO 2016-2018

Time Period	Wirral Under 18 Conceptions		North West (Conception Rate per 1,000)	England (Conception Rate per 1,000)
	Number of Conceptions	Conception Rate Per 1,000		
1999-01	916	46.9	47.1	42.5
2000-02	935	47.3	46.0	43.0
2001-03	906	45.5	45.2	42.5
2002-04	880	44.1	45.5	42.2
2003-05	879	44.0	46.0	41.7
2004-06	911	45.4	45.7	41.2
2005-07	918	46.9	45.9	41.1
2006-08	865	45.1	45.2	40.6
2007-09	817	43.9	44.7	39.4
2008-10	789	42.2	42.3	37.0
2009-11	746	40.9	39.2	34.0
2010-12	677	37.9	35.5	30.9
2011-13	594	33.9	31.5	27.6
2012-14	564	32.7	28.7	25.0
2013-15	514	30.3	29.8	25.5
2014-16	465	27.6	24.6	20.8
2015-17	400	24.1	23.0	19.1
2016-18	363	22.4	22.0	17.8

Notes and Definitions

1. The under 18 conception rate is a rate per 1,000 women aged 15-17 years of age
2. The numerator includes any conceptions in under 18s (including any of those aged under 15) while the denominator is just 15-17 year olds.
3. Data presented is for 3 pooled years to smooth out the random year-on-year variations which can characterise small datasets such as under 18 conceptions

Source: Office for National Statistic ([ONS](#))

SECTION 3: HEALTH AND WELLBEING

TABLE 3a

TREND IN BREASTFEEDING INITIATION AND 6-8 WEEKS RATES, BY AREA,
2008/09 - 2018/19

Year	Wirral		North West		England	
	Initiation (%)	6-8 weeks (%)	Initiation (%)	6-8 weeks (%)	Initiation (%)	6-8 weeks (%)
2008/09	53.3	28.0	61.8	*	71.7	*
2009/10	56.9	30.4	63.0	32.5	72.7	44.7
2010/11	55.5	29.9	63.4	34.0	73.7	46.1
2011/12	55.6	30.2	62.0	34.1	74.0	47.2
2012/13	56.7	31.0	62.3	33.0	73.9	47.2
2013/14	*	31.0	64.5	*	74.0	45.8
2014/15	55.6	31.0	64.6	*	74.3	43.8
2015/16	58.9	32.8	64.2	*	74.0	43.2
2016/17	59.4	33.9	64.5	*	74.5	44.4
2017/18	56.2	33.2	*	*	*	43.1
2018/19	58.7	35.9	62.4	38.9	67.4	46.2

Notes and Definitions

1. Breastfeeding initiation is defined as a mother giving any breast milk (including expressed milk) in the first 48 hours after birth. Please note that since 2017/18, breastfeeding initiation figures have been recalculated as the percentage of babies whose first feed is breastmilk. Therefore, figures from 2017/18 onwards cannot be compared with previous years
2. A very small number of women would be expected to be prevented from breastfeeding or giving first feed breastmilk as a result of their own medical history or condition following birth, and a very small number of infants would be expected to be too sick to receive mother's own milk or donor milk in the first 48 hours. It should therefore be noted that this indicator would not be expected to reach 100%
3. Breastfeeding at 6-8 weeks is defined as the percentage of infants that are totally or partially breastfed at age 6-8 weeks. Due to changes in the methodology, figures for breastfeeding at 6-8 weeks from 2015/16 onwards cannot be compared with previous years
4. Some figures are missing (*) for Wirral, North West, and England. This is due to incomplete data

Source: *Child and Maternal Health Profiles*, [Public Health England \(PHE\)](#)

SECTION 3: HEALTH AND WELLBEING

TABLE 3b

TREND IN MATERNAL SMOKING AT THE TIME OF DELIVERY, BY AREA, 2010/11 - 2018/19

Year	Wirral		North West		England	
	Percentage (%)	Count	Percentage (%)	Count	Percentage (%)	Count
2010/11	14.6	523	17.8	15,138	13.6	89,042
2011/12	13.2	479	17.1	14,650	13.3	87,707
2012/13	12.0	418	16.5	14,026	12.8	83,506
2013/14	*15.7	420	15.5	12,808	12.2	75,913
2014/15	*13.9	364	14.8	12,107	11.7	70,879
2015/16	*12.4	354	13.8	11,252	11.0	67,195
2016/17	*12.0	348	13.4	10,949	10.7	65,023
2017/18	*13.5	379	13.4	10,737	10.8	64,391
2018/19	13.9	422	12.7	9,951	10.6	61,399

Notes and Definitions

1. Asterisk in table (*) indicates that there is a data quality issue with this value
2. Figures show the number of women who smoked at time of delivery as well as the rate per 100 maternities (%)
3. Due to changes in methodology, these figures cannot be compared to those published in previous versions of the Compendium

Source: *Public Health Outcomes Framework*, [Public Health England \(PHE\)](#)

SECTION 3: HEALTH AND WELLBEING

TABLE 3c

ESTIMATED PREVALENCE OF OVERWEIGHT AND OBESITY, BY AGE AND GENDER, WIRRAL, 2017

Age Band	Male			Female		
	Healthy weight*	Overweight	Obese	Healthy weight*	Overweight	Obese
16-24	72.0%	17.5%	10.5%	63.5%	19.2%	17.4%
25-34	51.1%	31.3%	17.5%	53.4%	23.6%	23.1%
35-44	39.8%	36.9%	23.3%	48.6%	25.3%	26.2%
45-54	35.6%	35.4%	29.0%	41.0%	25.8%	33.3%
55-64	33.4%	36.8%	29.8%	43.8%	28.5%	27.7%
65-74	32.7%	38.1%	29.2%	42.7%	31.0%	26.3%
75+	44.5%	34.2%	21.3%	54.7%	26.0%	19.2%
All ages	43.0%	33.3%	23.6%	48.7%	25.9%	25.4%

Notes and Definitions

1. Overweight: Body Mass Index (BMI) greater than or equal to 25kg/m² but less than 30kg/m².
Obese: BMI greater than or equal to 30kg/m²
2. *Healthy weight will include individuals that are either underweight or severely underweight
3. For more information on the topic of obesity then please visit the Wirral Intelligence Service website for information on [Childhood Obesity](#) and [Adult Obesity](#)

Source: [Health Survey for England](#)

SECTION 3: HEALTH AND WELLBEING

TABLE 3d

ESTIMATED PREVALENCE OF OVERWEIGHT AND OBESITY, BY GENDER AND WIRRAL WARDS, 2017

Ward Name	Male (%)			Female (%)		
	*Healthy weight	Overweight	Obese	*Healthy weight	Overweight	Obese
Bebington	41.9%	34.8%	23.3%	48.6%	24.5%	26.9%
Bidston & St James	32.7%	37.8%	29.5%	47.5%	28.7%	23.7%
Birkenhead & Tranmere	38.3%	34.4%	27.3%	45.7%	30.1%	24.3%
Bromborough	47.0%	30.8%	22.2%	48.7%	26.1%	25.2%
Clatterbridge	44.1%	34.9%	21.1%	53.5%	19.9%	26.6%
Cloughton	48.1%	29.8%	22.1%	48.4%	26.5%	25.1%
Eastham	43.8%	33.9%	22.2%	50.3%	23.2%	26.6%
Greasby, Frankby & Irby	40.1%	37.7%	22.2%	53.2%	19.8%	27.0%
Heswall	43.3%	35.3%	21.4%	53.0%	20.1%	26.8%
Hoylake & Meols	46.0%	33.5%	20.5%	51.7%	21.7%	26.6%
Leasowe & Moreton East	40.6%	33.9%	25.5%	48.4%	27.2%	24.4%
Liscard	37.1%	35.3%	27.6%	46.7%	28.7%	24.6%
Moreton West & Saughall Massie	41.0%	35.9%	23.1%	48.8%	25.1%	26.0%
New Brighton	47.3%	28.8%	23.9%	46.5%	28.1%	25.4%
Oxton	48.5%	31.4%	20.1%	49.6%	24.2%	26.2%
Pensby & Thingwall	45.2%	34.8%	20.0%	51.7%	22.5%	25.8%
Prenton	41.1%	34.6%	24.3%	49.9%	24.8%	25.4%
Rock Ferry	36.3%	35.8%	27.9%	48.2%	28.3%	23.6%
Seacombe	31.6%	38.1%	30.2%	46.9%	29.3%	23.8%
Upton	35.5%	37.5%	27.0%	49.3%	26.0%	24.7%
Wallasey	42.3%	35.4%	22.3%	50.9%	22.7%	26.5%
West Kirby & Thurstaston	39.9%	37.4%	22.7%	53.3%	20.6%	26.1%
Wirral	41.5%	34.6%	24.0%	49.5%	25.0%	25.5%

Notes and Definitions

1. Overweight: Body Mass Index (BMI) greater than or equal to 25kg/m² but less than 30kg/m². Obese: BMI greater than or equal to 30kg/m²
2. *Healthy weight will include individuals that are either underweight or severely underweight
3. For more information on the topic of obesity then please visit the Wirral Intelligence Service website for information on [Childhood Obesity](#) and [Adult Obesity](#)

Source: [Health Survey for England](#)

SECTION 3: HEALTH AND WELLBEING

TABLE 3e

TREND IN PROPORTION OF SMOKERS SUCCESSFULLY QUITTING AFTER FOUR WEEKS, WIRRAL, 2000/01 - 2018/19

Year	Numbers of Quit Dates Set	Numbers of Clients Still Quit After 4 Weeks	Quit Rate %
2000/01	791	507	64.1
2001/02	909	497	54.7
2002/03	3,688	1,709	46.3
2003/04	4,507	1,991	44.2
2004/05	5,506	2,533	46.0
2005/06	5,637	2,383	42.3
2006/07	5,675	2,203	38.8
2007/08	6,087	2,188	35.9
2008/09	5,271	2,359	44.8
2009/10	6,624	2,812	42.5
2010/11	8,738	3,101	35.5
2011/12	8,121	3,377	41.6
2012/13	5,268	2,183	41.4
2013/14	3,982	1,727	43.4
2014/15	3,470	1,371	39.5
2015/16	2,777	1,382	49.8
2016/17	2,253	1,195	53.0
2017/18	3,063	1,502	49.0
2018/19	3,009	1,523	50.6

Notes and Definitions

1. A client is counted as having successfully quit smoking at the 4 week follow up if he/she has not smoked at all during the 4 weeks following the quit date. This is based on self-reported smoking status by clients; a proportion of quits are also confirmed with Carbon Monoxide readings
2. Figures are calculated as a proportion of clients who have set a quit date whilst in treatment services
3. Figures presented here are quit attempts, not clients. Clients may attempt to stop smoking several times during any given year and so may be counted more than once

Source: [NHS Digital](#)

SECTION 3: HEALTH AND WELLBEING

TABLE 3f

INDICATORS OF ALCOHOL-RELATED HARM, BY AREA, 2018-19

Time range	Indicator	Number	Rate per 100,000		
		Wirral	Wirral	North West	England
2018	Years of life lost (males)	1,547	1,124	1,140	926
	Years of life lost (females)	766	516	471	353
2018	Alcohol related mortality (males)	132	85.7	78.7	67.2
	Alcohol related mortality (females)	69	37.2	34.4	28.7
2018/19	Admission episodes for alcohol specific conditions (males)	2,727	1,784	1,211	869
	Admission episodes for alcohol specific conditions (females)	1,365	830	573	397

Notes and Definitions

1. Due to changes in the Local Alcohol Profiles for England, indicators included in previous versions of this compendium may have been removed and/or changed
2. Rates for all indicators are a directly age standardised rate per 100,000 population
3. Mortality figures are recorded by calendar years whereas hospital admission figures are recorded by financial year. This therefore explains why some years are shown as 2018 and others as 2018/19

Source: Local Alcohol Profiles for England, [Public Health England \(PHE\)](#)

SECTION 3: HEALTH AND WELLBEING

TABLE 3g

ALCOHOL-RELATED A&E ATTENDANCES, WIRRAL, 2016/17 - 2018/19
(3 YEARS POOLED)

Wirral	Alcohol-related assault	Alcohol-related deliberate self-harm	All alcohol-related injury
Number	1,266	562	5,319
Rate per 1,000	1.7	0.7	6.9

Notes and Definitions

1. This data relates to alcohol-related Accident and Emergency (A&E) attendances where an injury was sustained between April 2016 and March 2019
2. The rate has been calculated using ONS mid-2018 population estimates as a rate per 1,000 people aged 18+

Source: Trauma & Injury Intelligence Group ([TIIG](#)), Liverpool John Moores University

SECTION 3: HEALTH AND WELLBEING

TABLE 3h

HOSPITAL ADMISSION RATES FOR ALCOHOL-RELATED CONDITIONS, WIRRAL, 2018/19

Area	Admitted to hospital with alcohol-related conditions (Narrow): Males, all ages (2018/19)				Admitted to hospital with alcohol-related conditions (Narrow): Females, all ages (2018/19)				Admitted to hospital with alcohol-related conditions (Narrow): All persons, all ages (2018/19)			
	Count	DSR per 100,000 population	Lower 95% CI	Upper 95% CI	Count	DSR per 100,000 population	Lower 95% CI	Upper 95% CI	Count	DSR per 100,000 population	Lower 95% CI	Upper 95% CI
Wirral	1,863	1,223.5	1,168.1	1,280.8	995	603.1	565.8	642.2	2,858	895.1	862.3	928.8
North West	33,494	983.4	972.8	994.1	18,844	519.9	512.5	527.4	52,338	741.5	735.2	747.9
England	220,682	850.7	847.1	854.3	136,977	494.4	491.8	497.0	357,659	663.7	661.5	665.9

Notes and Definitions

1. The 'Narrow Measure' for alcohol related hospital admissions was introduced in 2012/13 and includes only those admissions where the primary diagnosis code has an alcohol attributable fraction (which means the admission is wholly or partially alcohol-related), or where either primary code or secondary code has an alcohol-attributable fraction
2. The results are presented as directly age-standardised rates (DSR) per 100,000 European standard population (2013). Age-standardised rates are used to allow comparison between populations which may contain different proportions of people of different ages
3. 95% Confidence Intervals indicate the range within which the true value of the rate lies, e.g. a 95% CI for Wirral of 862.3 to 928.8 (all persons) means that we can be 95% certain that the true rate lies somewhere between these two values
4. Various changes have been made to the methodology of this indicator within the Local Alcohol Profiles for England (LAPE), including geography updates and attributable fractions. For more information, please visit: <https://fingertips.phe.org.uk/profile/local-alcohol-profiles>

Source: Local Alcohol Profiles for England (LAPE), [Public Health England \(PHE\)](#)

SECTION 3: HEALTH AND WELLBEING

TABLE 3i

TREND IN SUCCESSFUL COMPLETIONS OF DRUG AND ALCOHOL TREATMENT, BY AREA, 2010 TO 2018

Year	Wirral			North West			England		
	Opiates	Non-opiates	Alcohol	Opiates	Non-opiates	Alcohol	Opiates	Non-opiates	Alcohol
2010	7.8%	43.6%	38.2%	6.2%	38.8%	29.8%	6.7%	34.4%	31.4%
2011	9.7%	42.2%	48.1%	7.7%	39.0%	33.0%	8.6%	36.8%	34.8%
2012	9.1%	48.4%	43.7%	7.7%	43.8%	38.7%	8.3%	37.9%	37.1%
2013	7.3%	52.6%	48.1%	7.8%	41.1%	41.1%	7.8%	37.8%	37.5%
2014	9.3%	51.5%	52.4%	8.4%	44.7%	44.4%	7.4%	39.2%	38.4%
2015	5.5%	32.8%	34.1%	7.6%	43.2%	43.2%	6.7%	37.3%	38.4%
2016	6.3%	35.2%	36.7%	7.0%	42.6%	43.6%	6.7%	37.1%	38.7%
2017	6.2%	43.7%	42.5%	6.1%	41.4%	43.1%	6.5%	36.9%	38.9%
2018	5.6%	51.5%	38.4%	5.4%	37.3%	40.1%	5.8%	34.4%	37.6%

Notes and Definitions

1. All percentages show clients who successfully left drug or alcohol treatment and did not then re-present to treatment within 6 months as a percentage of the total number of drug or alcohol users in the treatment
2. All figures relate to populations aged 18-75 years
3. Public Health England (PHE) revised and backdated these figures in November 2016. Consequently, these figures may differ from those quoted in previous editions of the compendium

Source: *Public Health Outcomes Framework*, [Public Health England \(PHE\)](#)

SECTION 3: HEALTH AND WELLBEING

TABLE 3j

SELF-REPORTED WELLBEING, BY AREA, 2018/19

Life Satisfaction: Overall, how satisfied are you with your life nowadays?

Area	Proportion of people scoring each category (%)			
	Low (0-4)	Medium (5-6)	High (7-8)	Very High (9-10)
Wirral	3.9	15.0	53.0	28.1
North West	4.9	13.7	50.6	30.9
England	4.3	13.4	51.7	30.6

Worthwhile: Overall, to what extent do you feel the things you do in your life are worthwhile?

Area	Proportion of people scoring each category (%)			
	Low (0-4)	Medium (5-6)	High (7-8)	Very High (9-10)
Wirral	x	9.2	54.0	34.1
North West	3.8	12.1	47.9	36.2
England	3.6	12.1	48.3	36.0

Happiness: Overall, how happy did you feel yesterday?

Area	Proportion of people scoring each category (%)			
	Low (0-4)	Medium (5-6)	High (7-8)	Very High (9-10)
Wirral	6.4	16.7	46.5	30.3
North West	8.2	16.1	40.4	35.3
England	7.8	15.7	41.1	35.4

Anxiety: Overall, how anxious did you feel yesterday?

Area	Proportion of people scoring each category (%)			
	Very Low (0-4)	Low (5-6)	Medium (7-8)	High (9-10)
Wirral	41.0	22.2	18.2	18.6
North West	43.5	21.8	15.1	19.6
England	40.8	23.2	16.3	19.7

Notes and Definitions

1. This data is from the Annual Population Survey (ONS)
2. All estimates are weighted (please see the ONS website for full details: www.ons.gov.uk)
3. Estimates may not add to 100% due to rounding
4. A value of 'x' indicates that data has been suppressed as the estimate is unreliable and/or the sample size is insufficient

Source: Office for National Statistics ([ONS](http://ons.gov.uk))

SECTION 3: HEALTH AND WELLBEING

TABLE 3k

PROPORTION OF PHYSICAL ACTIVITY LEVELS PER WEEK, BY AREA, 2015-16 TO 2018-19

Year	Wirral			North West			England		
	Active	Fairly Active	Inactive	Active	Fairly Active	Inactive	Active	Fairly Active	Inactive
November 2015 - 16	60.9%	14.0%	25.1%	60.7%	12.1%	27.2%	62.1%	12.4%	25.6%
November 2016 - 17	61.4%	15.4%	23.2%	61.4%	12.0%	26.6%	61.8%	12.5%	25.7%
May 2017 - 2018	59.4%	12.5%	28.1%	61.2%	12.3%	26.6%	62.3%	12.5%	25.2%
November 2017 - 2018	57.1%	12.3%	30.6%	61.1%	12.5%	26.4%	62.6%	12.3%	25.1%
May 2018 - 2019	60.9%	13.5%	25.7%	62.1%	12.1%	25.9%	63.2%	12.0%	24.8%

Notes and Definitions

1. These estimates include the activities of walking, cycling, dance, fitness and sporting activities, but exclude gardening which is outside of Sport England's remit
2. Activity is counted in moderate intensity equivalent minutes whereby each 'moderate' minute counts as one minute and each 'vigorous' minute counts as two moderate minutes
3. Depending on the number of minutes of moderate intensity equivalent (MIE)* physical activity, people are described as being:
 - Inactive: Doing less than 30 minutes a week
 - Fairly Active: Doing 30-149 minutes a week
 - Active: Doing at least 150 minutes a week
4. Moderate activity is defined as activity where you raise your breathing rate
5. Vigorous activity is where you are out of breath or are sweating (you may not be able to say more than a few words without pausing for breath)
6. For each survey there were an average of 500 respondents for Wirral, 27,400 respondents for the North West and 186,800 respondents for England

Source: [Active Lives Adult Survey](#)

SECTION 3: HEALTH AND WELLBEING

TABLE 3I

LEGAL ABORTION RATES BY AGE GROUP, BY AREA, 2017

Area	Abortion Rate per 1,000 Women Aged:							Number of Abortions
	Under 18	18-19	20-24	25-29	30-34	35+	All Ages	
Wirral	12.4	43.9	42.1	32.5	22.1	9.8	22.7	1,246
North West	10.3	27.4	32.3	28.6	20.7	8.8	18.8	26,833
England	8.3	23.6	28.5	24.5	18.5	8.7	16.8	184,301

TABLE 3I(i)

LEGAL ABORTION RATES BY AGE GROUP, BY AREA 2018

Area	Abortion Rate per 1,000 Women Aged:							Number of Abortions
	Under 18	18-19	20-24	25-29	30-34	35+	All Ages	
Wirral	8.7	37.1	47.4	39.0	26.4	8.9	24.2	1,322
North West	10.6	26.8	33.3	29.3	23.1	9.3	19.6	27,959
England	8.1	23.9	29.4	25.4	20.0	9.3	17.5	191,555

Notes and Definitions

1. This table summarises information from the abortion notification forms returned to the Chief Medical Officers of England and Wales in respect of abortions carried out in 2017 and 2018
2. Abortion rates for individual age groups are per 1,000 women in that age group. The figure for all ages is expressed as an age-standardised rate per 1,000 women aged 15-44 years
3. Figures for 2017 have been updated retrospectively by the Department of Health. The figures in the 2017 table reflect these updates

Source: [Department of Health and Social Care](#)

SECTION 3: HEALTH AND WELLBEING

TABLE 3m

TREND IN PREVALENCE OF DIAGNOSED HIV AND AIDS, WIRRAL, 2011 TO 2018

Year	Number	Prevalence Rate (per 1,000)
2011	155	0.85
2012	157	0.87
2013	166	0.92
2014	199	1.11
2015	203	1.14
2016	204	1.15
2017	211	1.19
2018	227	1.29

Notes and Definitions

1. Number refers to the total number of cases aged 15-59 years seen at HIV services in a given year, including those who died during that year
2. Prevalence is expressed as a crude rate per 1,000 population and has not been adjusted to take account of differences in the age structure of the population (age standardised). In previous years the prevalence was calculated using the total population, from 2010 it is calculated on just those aged 15-59 years, this is in line with Public Health England (PHE) guidance
3. 'High prevalence' of HIV/AIDS is 2-5 diagnosed infections per 1,000 aged 15-59 years, and 'extremely high prevalence' is 5 or more diagnosed infections per 1,000 people aged 15-59 years. Wirral does not fall into either of these categories
4. Data supplied for previous years are updated on an annual basis due to clinic/laboratory resubmissions and improvements to data cleaning. Data may therefore differ from previous editions of the Statistical Compendium

Source: *Sexual and Reproductive Health Profile*, [Public Health England \(PHE\)](#)

SECTION 3: HEALTH AND WELLBEING

TABLE 3n

TREND IN UPTAKE OF NHS HEALTH CHECKS, PEOPLE AGED 40 – 74, BY AREA, 2018/19

Area	Invited for a Health Check	Had Health Check Completed	Take up Proportion
Arno Primary Care Alliance PCN	3,211	1,964	61.2%
Brighter Birkenhead PCN	4,504	1,674	37.2%
Healthier South Wirral PCN	3,171	1,305	41.2%
Healthier West Wirral PCN	4,774	1,633	34.2%
Moreton & Meols PCN	3,317	988	29.8%
North Coast Alliance PCN	1,445	693	48.0%
Wallasey Wellness PCN	1,986	1,209	60.9%
Wirral	22,408	9,466	42.2%
North West	460,999	201,971	43.8%
England	2,741,294	1,258,940	45.9%

Notes and Definitions

1. The [NHS Health Check programme](#) aims to help prevent heart disease, stroke, diabetes and kidney disease. Everyone between the ages of 40 and 74, who has not already been diagnosed with one of these conditions, will be invited (once every five years) to have a check to assess, raise awareness and support them to manage their risk of cardiovascular disease. A high take up of NHS Health Check is important to identify early signs of poor health leading to opportunities for early interventions
2. PCN's (Primary Care Networks) are collections of GPs across Wirral to help to deliver on the NHS Long Term Plan. For more information on Primary Care Networks, please visit: <https://www.wirralintelligenceservice.org/this-is-wirral/wirral-primary-care-networks/>

Source: GP Federations and Public Health England, [NHS Health Check Dashboard](#)

SECTION 3: HEALTH AND WELLBEING

TABLE 3o

**TREND IN COVERAGE OF NHS CERVICAL SCREENING PROGRAMME: WOMEN
AGED 25-49 AND 50-64, BY AREA, 2014/15 - 2018/19**

Area	Coverage Rate (%)									
	2014/15		2015/16		2016/17		2017/18		2018/19	
	25-49	50-64	25-49	50-64	25-49	50-64	25-49	50-64	25-49	50-64
Wirral	72.3	75.7	71.0	76.4	72.3	75.7	71.5	73.3	73.0	73.6
North West	70.8	77.0	70.8	77.8	70.8	77.0	70.1	75.1	71.3	75.5
England	71.2	78.4	71.8	79.4	71.2	78.4	69.1	76.2	69.8	76.2

Notes and Definitions

1. The National Cervical Screening Programme target is for 80% of eligible women aged 25-64 to be screened at least once every 3.5 years (25-49) and once every 5.5 years (50-64)
2. Coverage is defined as the percentage of women in a population who were eligible for screening at a given point in time, who were screened adequately within a specified period.
3. Women are eligible for screening if they are in the screening age range and have not become ineligible because their recall has been ceased for clinical reasons (most commonly due to hysterectomy)
4. Coverage is calculated as the number of women in this age group who have had an adequate screening test within the last 3.5/5.5 years as a percentage of the eligible population aged 25-64 years
5. Age groups are shown separately, as there are large differences in coverage rates between the age groups
6. NHS Digital retrospectively updates figures from previous years from time to time. The table above reflects these updates. The figures may differ from those quoted in previous compendiums

Source: [NHS Digital](#)

SECTION 3: HEALTH AND WELLBEING

TABLE 3p

COVERAGE OF NHS BREAST CANCER SCREENING PROGRAMME: WOMEN AGED 53-70, BY AREA, 2014/15 - 2018/19

Area	Coverage Rate %				
	2014/15	2015/16	2016/17	2017/18	2018/19
Wirral	76.9	76.8	77.1	76.9	76.7
North West	71.9	71.5	72.5	72.8	73.2
England	75.4	75.5	75.4	74.9	74.6

Notes and Definitions

1. The National Breast Screening Programme has the aim of screening 70% of eligible women aged 53-70 at least once every 3 years
2. The coverage rate is the percentage of women in the population who are eligible for screening at a particular point in time (31 March 2019 in this instance), who have had a test with a recorded result at least once within the screening round, i.e. in the previous three years. Currently coverage is best assessed using the 53-70 age group
3. Women are eligible for screening if they are in the screening age range and are not ineligible due to bilateral mastectomy
4. NHS Digital retrospectively updates figures from previous years. The table above reflects these updates. The figures may differ from those quoted in previous compendiums

Source: [NHS Digital](#)

SECTION 3: HEALTH AND WELLBEING

TABLE 3q

UPTAKE OF VACCINATIONS IN OLDER PEOPLE BY AREA, 2017/18 AND 2018/19

Vaccination	2017/18			2018/19		
	Wirral	North West	England	Wirral	North West	England
Flu Vaccine Uptake % (65+)	76.2	75.6	72.9	74.6	74.0	72.0
PPV Uptake % (65+)	72.5	71.2	69.5	72.5	70.8	69.2
Shingles Uptake % (70+)	44.4	42.5	44.4	32.0	31.3	31.9

Notes and Definitions

1. The influenza vaccination programme covers people aged 65+ or adults in clinical risk groups (e.g. those with respiratory conditions such as Chronic Obstructive Pulmonary Disease or COPD). Uptake data of influenza vaccinations is collected by the Public Health England (PHE) on behalf of the Department of Health
2. The target for flu vaccination is for 75% of at-risk groups and all those aged over 65 to be vaccinated. There is no target for pneumococcal polysaccharide vaccine (PPV) uptake; PHE suggest performance should be compared with England and previous years

Source: *Public Health Outcomes Framework*, [Public Health England \(PHE\)](#)

SECTION 3: HEALTH AND WELLBEING

TABLE 3r

NUMBER AND RATE OF PEOPLE WITH A LEARNING DISABILITY KNOWN TO GPs,
BY AREA, 2016/17 - 2018/19

Year	Wirral (Number)	Rate per 1,000		
		Wirral	North West	England
2016/17	2,184	6.6	4.9	4.7
2017/18	2,318	6.9	5.1	4.9
2018/19	2,414	7.2	5.3	5.0

Notes and Definitions

1. The indicator previously recorded adults (aged 18-64) with a learning disability known to GPs
2. The value is the rate per 1,000 patients on GP register list

Source: [NHS Digital](#)

SECTION 3: HEALTH AND WELLBEING

TABLE 3s

CARERS BY WIRRAL CONSTITUENCY, AS AT AUGUST 2019

Area	Estimated number of Carers (Census, 2011)	Carers known to Wirral Council Department of Adult Social Services (DASS) (Aug-2019)	Claimants of Carer Allowance (Aug-2019)
Birkenhead	9,344	1,248	2,499
Wallasey	9,538	1,306	2,080
Wirral South	11,127	906	919
Wirral West	10,331	1,286	949
Wirral	40,340	4,746	6,454

Notes and Definitions

1. As carers do not always access services and/or not claim Carer Allowance, it is difficult to produce a definitive number of carers in Wirral
2. The Census 2011 figures are people who said that they provided any unpaid care (between 1-50 hours per week)
3. The figure of carers known to DASS reflects improvements in data quality over previously reported figures
4. Figures for Carer's Allowance may not sum due to rounding
5. Please note that a new Census will be conducted in 2021. Data from this new Census will be released in line with the ONS data release timetable when available

Source: Department of Adult Social Services (Wirral Council), [StatXplore](#) and Census 2011 ([ONS](#))

SECTION 3: HEALTH AND WELLBEING

TABLE 3t

TREND IN HOSPITAL ADMISSION EPISODES FOR MENTAL HEALTH CONDITIONS, IN CHILDREN AND YOUNG PEOPLE (0-17 YEARS), NUMBER AND CRUDE RATE PER 100,000 BY AREA, 2014/15 - 2018/19

Year	Wirral (Number)	Crude rate per 100,000		
		Wirral	North West	England
2014/15	83	122.7	116.2	87.7
2015/16	80	118.4	111.6	85.9
2016/17	90	132.9	106.6	81.5
2017/18	105	155.1	105.6	84.7
2018/19	105	155.4	104.3	88.3

Notes and Definitions

1. This table shows inpatient admission rate for mental health disorders per 100,000 population aged 0-17 years with a primary diagnosis codes F00 to F99 (mental and behavioural disorders)
2. Data refers to episodes of admissions and not persons. Any indicator based on hospital admissions may be influenced by local variation in referral and admission practices as well as variation in incidence or prevalence

Source: Child and Maternal Health Profiles, [Public Health England \(PHE\)](#)

SECTION 3: HEALTH AND WELLBEING

TABLE 3u

TREND IN HOSPITAL ADMISSION EPISODES AS A RESULT OF SELF-HARM IN CHILDREN AND YOUNG PEOPLE (10-24 YEARS), NUMBER AND DIRECTLY STANDARDISED RATE PER 100,000, BY AREA, 2014/15 – 2018/19

Year	Wirral (Number)	Directly Standardised Rate (DSR) per 100,000		
		Wirral	North West	England
2014/15	287	524.9	514.5	401.9
2015/16	368	689.7	520.4	430.5
2016/17	282	543.3	473.5	407.1
2017/18	280	549.0	488.8	421.2
2018/19	310	604.1	517.4	444.0

Notes and Definitions

1. This table shows the number of finished admission episodes in children aged between 10 and 24 years where the main recorded cause (defined as the first diagnosis code that represents an external cause (V01-Y98)) is between X60 and X84 (Intentional self-harm)
2. Data refers to episodes of admissions and not persons. Any indicator based on hospital admissions may be influenced by local variation in referral and admission practices as well as variation in incidence or prevalence
3. Directly age-standardised rates are used to allow comparison between populations which may contain different proportions of people of different ages

Source: Child and Maternal Health Profiles, [Public Health England \(PHE\)](#)

SECTION 3: HEALTH AND WELLBEING

TABLE 3v

INCIDENCE OF THE MOST COMMON CANCERS IN WIRRAL BY GENDER, WITH 95% CONFIDENCE LIMITS, WIRRAL, 2017

Cancer Type	Male				Female			
	Number	ASR	LCI	UCI	Number	ASR	LCI	UCI
Prostate Cancer	293	185.9	165.1	208.5	-	-	-	-
Breast Cancer	*	*	*	*	314	175.2	156.2	196.0
Colorectal Cancer	159	102.6	87.3	120.0	122	63.1	52.3	75.6
Cancer of the Trachea, Bronchus and Lung	129	82.1	68.6	97.7	161	84.8	72.1	99.2
Skin Cancer	71	45.8	35.8	57.9	54	30.7	23.0	40.3
Kidney Cancer (not including Renal Pelvis)	50	31.6	23.4	41.8	43	23.0	16.6	31.2
Uterine Cancer	-	-	-	-	52	28.2	21.0	37.2
Bladder Cancer	42	26.9	19.4	36.5	16	7.9	4.5	13.2
Pancreatic Cancer	39	24.9	17.7	34.2	32	16.3	11.1	23.3
Ovarian Cancer (including cancer of the fallopian tube(s))	-	-	-	-	46	24.7	18.0	33.1
Oesophageal Cancer	36	23.2	16.2	32.2	22	11.4	7.1	17.5
Leukaemia	33	21.7	14.9	30.5	35	19.0	13.2	26.7
Non-Hodgkin's Lymphoma	33	21.4	14.7	30.1	33	17.9	12.3	25.5
Liver Cancer	25	15.8	10.2	23.5	11	5.2	2.6	9.8
Stomach Cancer	21	13.8	8.5	21.1	8	3.8	1.6	7.9
Cervical Cancer	-	-	-	-	12	6.9	3.5	12.2
All Cancers (excluding Non-Melanoma Skin Cancer)	1,136	726.3	684.6	770.0	1,118	604.1	568.9	641.0

Notes and Definitions

1. Cancers are ranked by ASR (Age Standardised Rate)
2. The number of cancers refers to newly diagnosed cancers (incidence) reported to regional cancer registries during 2017. An ASR is a weighted average of the age-specific cancer incidence rates accounting for age and gender, which are comparable over time. These are not the same as Standardised Registration Ratios (SRRs)
3. 95% Confidence Intervals (CIs) indicate the range within which the true value of the indicator has a 95% chance of falling, e.g. a 95% CI for Wirral men with stomach cancer is 8.5 to 21.1, this means that we can be 95% certain that the true value lies somewhere between 8.5 to 21.1
4. All Cancer refers to the total number of newly diagnosed cancers reported and includes some cancers not listed above, meaning figures may not sum
5. * denotes numbers less than 5 which have been suppressed. A hyphen denotes no data (usually because that type of cancer is gender specific)

Source: www.CancerData.nhs.uk

SECTION 3: HEALTH AND WELLBEING

TABLE 3w

GP DISEASE REGISTER PREVALENCE RATES, WIRRAL CLINICAL COMMISSIONING GROUP (CCG), 2018/19

Condition (age specified where relevant)	Wirral CCG		North of England (%)	England (%)
	Total Number	Percentage (%)		
Asthma	23,622	7.0	6.6	6.1
Atrial Fibrillation	9,701	2.9	2.1	2.0
Cancer	12,384	3.7	3.1	3.0
Chronic Kidney Disease (18+)	13,820	5.1	4.5	4.1
Chronic Obstructive Pulmonary Disease (COPD)	8,724	2.6	2.5	1.9
Coronary Heart Disease	13,094	3.8	3.6	3.1
Dementia	3,190	1.0	0.8	0.8
Depression (18+) (Diagnosed in the past year)	6,908	2.6	1.7	1.3
Depression (18+) (Lifetime)	44,503	16.5	12.8	10.7
Diabetes Mellitus (17+)	19,893	7.3	7.2	6.9
Epilepsy (18+)	2,802	1.0	0.9	0.8
Heart Failure	4,506	1.3	1.1	0.9
Hypertension	54,675	16.2	14.6	14.0
Learning Disability (all ages)	2,414	0.7	0.5	0.5
Mental Health	3,828	1.1	1.1	1.0
Osteoporosis (50+)	1,595	1.1	0.8	0.8
Palliative Care	2,370	0.7	0.5	0.4
Rheumatoid Arthritis (16+)	2,015	0.7	0.8	0.8
Stroke/TIA	7,704	2.3	2.0	1.8

Notes and Definitions

1. The Quality and Outcomes Framework (QOF) is a reward and incentive system for GP surgeries to keep up to date disease/condition registers
2. The total number relates to patients registered with the condition in all Wirral practices
3. Prevalence calculated using total eligible practice populations as a denominator
4. As some indicators are age-specific, prevalence has been calculated using total eligible practice populations in the appropriate age groups where necessary
5. Newly diagnosed depression is those that have been diagnosed with depression within the last year, aged 18 and over. This is a subset of the lifetime prevalence of depression indicator

Source: [NHS Digital](#)

SECTION 3: HEALTH AND WELLBEING

TABLE 3x

GP DISEASE REGISTER PREVALENCE RATES (%), PRIMARY CARE NETWORK (PCN), 2018/19

Condition	Primary Care Network (PCN)						
	Arno Primary Care Alliance	Brighter Birkenhead	Healthier South Wirral	Healthier West Wirral	Moreton & Meols	North Coast Alliance	Wallasey Wellness
Atrial Fibrillation	2.4%	2.5%	3.0%	3.9%	2.9%	2.3%	2.5%
Coronary Heart Disease	3.7%	3.6%	3.8%	4.4%	4.2%	3.6%	3.7%
Heart Failure	1.3%	1.3%	1.5%	1.4%	1.5%	1.2%	1.2%
Hypertension	15.7%	15.2%	15.8%	18.3%	16.5%	14.7%	15.8%
Stroke/TIA	2.1%	2.1%	2.3%	2.8%	2.5%	2.2%	2.0%
Asthma	7.1%	7.3%	6.8%	6.6%	6.7%	7.1%	7.4%
Chronic Obstructive Pulmonary Disease (COPD)	3.1%	3.0%	2.3%	1.9%	2.8%	2.7%	2.6%
Obesity (18+)	12.0%	13.2%	12.3%	10.0%	12.6%	10.4%	13.5%
Cancer	3.0%	3.1%	4.2%	4.6%	4.1%	3.2%	3.2%
Chronic Kidney Disease (18+)	4.2%	4.7%	5.1%	6.4%	5.4%	4.7%	4.9%
Diabetes Mellitus (17+)	7.4%	7.4%	7.1%	6.7%	7.7%	7.5%	7.6%
Palliative Care	0.7%	0.7%	0.8%	0.6%	0.9%	1.0%	0.5%
Dementia	0.8%	1.1%	1.1%	1.1%	0.8%	0.7%	0.8%
Depression (18+) (Lifetime)	20.6%	18.5%	15.5%	12.2%	15.4%	17.6%	16.9%
Depression (18+) (Diagnosed in the past year)	3.5%	3.1%	2.3%	1.7%	2.1%	2.6%	2.6%
Epilepsy (18+)	1.2%	1.1%	1.1%	0.8%	1.1%	0.9%	1.1%
Learning Disability (all ages)	0.7%	0.9%	0.8%	0.4%	0.8%	0.7%	0.7%
Mental Health	1.4%	1.4%	0.9%	0.8%	1.0%	1.2%	1.2%
Osteoporosis (50+)	1.0%	1.2%	1.9%	0.9%	0.8%	0.9%	1.1%
Rheumatoid Arthritis (16+)	0.7%	0.7%	0.8%	0.8%	0.8%	0.6%	0.7%

Notes and Definitions

1. For more information on Primary Care Networks (PCN's), please visit the dedicated webpage on the [Wirral Intelligence Service Website](#)

Source: [NHS Digital](#)

SECTION 3: HEALTH AND WELLBEING

TABLE 3y

EMERGENCY ADMISSIONS IN RESIDENTS AGED 50+, BY AREA, 2015/16 - 2017/18
AND 2016/17 - 2018/19

Area	2015/16 - 2017/18		2016/17 - 2018/19	
	Number	Rate per 1,000	Number	Rate per 1,000
Bebington	3,366	170.6	3,453	172.3
Bidston & St James	4,024	269.7	4,010	261.8
Birkenhead & Tranmere	3,667	258.5	3,686	253.9
Bromborough	3,872	223.2	3,903	216.8
Clatterbridge	4,081	193.0	4,269	200.2
Cloughton	4,148	221.2	4,281	224.5
Eastham	3,667	195.4	3,665	196.2
Greasby, Frankby & Irby	3,706	175.9	3,656	172.2
Heswall	3,316	153.1	3,382	155.2
Hoylake & Meols	3,535	190.3	3,639	191.6
Leasowe & Moreton East	4,151	249.0	4,185	249.6
Liscard	3,705	207.7	3,733	203.2
Moreton West & Saughall Massie	3,738	201.7	3,655	191.8
New Brighton	4,075	219.2	4,126	215.8
Oxton	4,370	237.3	4,300	233.6
Pensby & Thingwall	3,583	184.7	3,563	183.8
Prenton	3,427	187.3	3,498	187.6
Rock Ferry	3,892	272.4	3,990	278.7
Seacombe	3,465	243.9	3,463	240.3
Upton	4,759	240.3	4,729	234.7
Wallasey	3,500	170.3	3,410	166.5
West Kirby & Thurstaston	3,588	187.2	3,554	185.0
Wirral	83,635	208.1	84,150	206.6
England	*	171.6	*	*

* Denotes a figure not available at the time of publishing

Notes and Definitions

1. 2015/16 - 2017/18 figures were calculated using the ONS mid-2016 population estimates. The 2016/17 - 2018/19 figures were calculated using the ONS mid-2017 population estimates
2. The data relates to emergency admissions generated between April 2015 to March 2018 and April 2016 to March 2019
3. Data presented is for 3 pooled years to smooth out random year-on-year variations which can characterise small datasets such as emergency admissions by ward
4. An emergency admission relates to those who have been admitted to hospital via a non-elective route
5. If you would like to see this information mapped then please visit [Local Insight](#)

Source: Hospital Episode Statistics ([HES](#))

SECTION 4: MORTALITY

TABLE 4a

INFANT MORTALITY RATES, BY AREA, 2016-18 (3 YEARS POOLED)

Stage of Infancy	Wirral		North West		England	
	Number of Deaths	Rate per 1,000	Number of Deaths	Rate per 1,000	Number of Deaths	Rate per 1,000
Stillbirths	38	3.8	1,064	4.2	8,094	4.2
Neonatal	38	3.8	825	3.3	5,477	2.8
Post-neonatal	13	1.3	336	1.3	2,131	1.1
Infant	51	5.1	1,161	4.6	7,608	3.9

Notes and Definitions

1. Stillbirth Rate: Number of foetal deaths occurring after 24 weeks of gestation, per 1,000 births
2. Neonatal Mortality Rate: Number of deaths to infants aged less than 28 days, per 1,000 live births
3. Post-neonatal Mortality Rate: Number of deaths to infants aged 28 days to 1 year, per 1,000 live births
4. Infant Mortality Rate: Number of deaths to infants aged less than 1 year, per 1,000 live births
5. Data is presented as a 3-year total, produced by aggregating the number of deaths for each three-year period (2016, 2017 and 2018). This is to smooth out random year-on-year variations

Source: *Child and Maternal Health Profiles*, [Public Health England \(PHE\)](#)

SECTION 4: MORTALITY

TABLE 4b

TREND IN INFANT MORTALITY, WIRRAL AND ENGLAND, 2001-03 TO 2016-18
(3 YEARS POOLED)

Years	Wirral				England			
	Total No. of Infant Deaths	Infant Mortality Rate	95% Confidence Intervals		Total No. of Infant Deaths	Infant Mortality Rate	95% Confidence Intervals	
			Lower Limit	Upper Limit			Lower Limit	Upper Limit
2001-03	41	4.1	2.9	5.5	9,210	5.4	5.2	5.5
2002-04	43	4.2	3.0	5.6	9,215	5.2	5.1	5.3
2003-05	55	5.2	3.9	6.7	9,291	5.1	5.0	5.2
2004-06	52	4.9	3.6	6.4	9,338	5.0	4.9	5.1
2005-07	51	4.7	3.5	6.2	9,397	4.9	4.8	5.0
2006-08	50	4.5	3.4	6.0	9,503	4.8	4.7	4.9
2007-09	52	4.7	3.5	6.1	9,421	4.7	4.6	4.8
2008-10	56	5.0	3.8	6.5	9,260	4.6	4.5	4.7
2009-11	53	4.7	3.5	6.2	9,062	4.4	4.3	4.5
2010-12	59	5.2	3.9	6.7	8,822	4.3	4.2	4.4
2011-13	53	4.7	3.6	6.2	8,467	4.1	4.0	4.2
2012-14	44	4.0	2.9	5.4	8,029	4.0	3.9	4.1
2013-15	35	3.3	2.3	4.6	7,734	3.9	3.8	4.0
2014-16	41	3.9	2.8	5.3	7,710	3.9	3.8	4.0
2015-17	51	4.9	3.7	6.5	7,734	3.9	3.8	4.0
2016-18	51	5.1	3.8	6.7	7,608	3.9	3.8	4.0

Notes and Definitions

1. The Infant Mortality Rate is defined as the number of deaths in infants aged less than 1 year, per 1,000 live births to mothers resident in the area
2. Data is presented as 3-year totals, produced by aggregating numbers of births and deaths for each three-year period (e.g. 2001-03, 2002-04, etc.). This is to smooth out random year-on-year variations
3. Confidence Intervals (CIs) indicate the range within which the true value of the indicator has a 95% chance of falling. For example, a 95% CI of 3.8 to 6.7, for Wirral for 2016-18, means that we can be 95% certain the true value lies somewhere between these two values

Source: *Child and Maternal Health Profiles*, [Public Health England \(PHE\)](#)

SECTION 4: MORTALITY

TABLE 4c

ALCOHOL SPECIFIC MORTALITY, BY AREA, 2016-18 (3 YEARS POOLED)

Area	Alcohol-specific mortality: Males, all ages (2016-18)				Alcohol-specific mortality: Females, all ages (2016-18)			
	Count	DSR	Lower 95% CI	Upper 95% CI	Count	DSR	Lower 95% CI	Upper 95% CI
Wirral	103	21.9	17.9	26.6	67	12.9	10.0	16.4
North West	1,971	19.3	18.5	20.2	1,100	10.3	9.7	11.0
England	11,367	14.7	14.5	15.0	5,677	7.0	6.8	7.2

Notes and Definitions

1. The results are presented as directly age-standardised rates (DSR) per 100,000 population
2. 95% Confidence Intervals (CIs) indicate the range within which the true value of rate lies, e.g. a 95% CI for males in Wirral is 17.9 to 26.6 means that we can be 95% certain that the true value lies somewhere between the two values
3. Data is presented as a 3-year total, produced by aggregating the number of deaths for each three-year period (2016, 2017 and 2018). This is to smooth out random year-on-year variations
4. Deaths recorded are from alcohol specific conditions (conditions which can only be caused by alcohol). See [Local Alcohol Profiles for England](#) guidance for full list of ICD 10 codes. ICD-10 groupings can be found in the Appendix of this compendium
5. The LAPE dataset was refreshed on 2 June 2015 and includes an amended methodology for generating the mortality indicators by searching all cause of deaths fields for three conditions (Ethanol poisoning, Methanol poisoning, Toxic effect of alcohol) which are not permitted as an underlying cause of death. This amendment has been applied to the full time series. Therefore, data in issues of the Compendium prior to 2016 are not comparable

Source: *Local Alcohol Profiles for England (LAPE)*, [Public Health England \(PHE\)](#)

SECTION 4: MORTALITY

TABLE 4d

PREMATURE MORTALITY BY CAUSE OF DEATH, WIRRAL, 2016-18 (3 YEARS POOLED)

Cause of Death	Total Number of Deaths	DSR	95% Confidence Interval	
			Lower Limit	Upper Limit
Cancer	1,389	147.9	140.2	155.9
Cardiovascular Disease	713	76.2	70.7	82.1
Respiratory Disease	515	54.7	50.0	59.6
Liver Disease	235	25.8	22.6	29.3
Suicide and Undetermined Injury	83	9.7	7.7	12.0

Notes and Definitions

1. Premature mortality is defined as deaths in those aged under 75 years
2. The results are presented as directly age-standardised rates (DSR) per 100,000 population (European standard population)
3. Data is presented as a 3-year total, produced by aggregating the number of deaths for each three-year period (2016, 2017 and 2018). This is to smooth out random year-on-year variations
4. For more information regarding which ICD-10 codes were used to calculate these figures please see Table 8a
5. 95% Confidence Intervals (CIs) indicate the range within which the true value of rate lies, e.g. a 95% CI of 140.2 to 155.9 means that we can be 95% certain that the true value lies between these two values

Source: Mortality Profile, [Public Health England \(PHE\)](#)

SECTION 4: MORTALITY

TABLE 4e

STANDARDISED MORTALITY RATIOS (SMR) BY BROAD CAUSE, WITH 95% CONFIDENCE INTERVALS, WIRRAL LOCAL AUTHORITY, 2016-18

Cause	Number	SMR	95% Confidence Intervals	
			Lower Limit	Upper Limit
Cancer	3,044	109.2	105.4	113.1
<i>Breast cancer</i>	219	113.4	98.4	128.4
<i>Lung cancer</i>	622	108.2	99.7	116.7
<i>Prostate cancer</i>	205	98.8	85.3	112.3
<i>Colorectal cancer</i>	316	112.0	99.6	124.3
Circulatory diseases	2,448	95.9	92.1	99.7
Respiratory diseases	1,771	124.6	118.8	130.4
<i>COPD</i>	695	132.2	122.4	142.0
<i>Pneumonia</i>	619	188.9	109.5	128.2
Mental and behavioural causes	1,044	107.0	100.5	113.5
Digestive causes	513	107.4	98.1	116.7
External causes	455	122.1	110.9	133.3
All causes	11,123	109.3	107.2	111.3

Notes and Definitions

1. The results are presented as indirectly standardised mortality ratios (SMR) for all ages
2. Standardised Mortality Ratios (SMR) is a way of comparing death rates in a particular area with those in the national population. The SMR for England is 100, and in this table, the SMR for Wirral in 2016-18 is 109.3. This means that Wirral has a mortality rate 9.3% higher than the national average (after taking account of differences in the age structure of the two populations)
3. In some cases, the cause of death mentioned on the death certificate may be amended by ONS following discussion with the relevant clinician. The data presented in this table is based on the underlying causes of death
4. 95% Confidence Intervals (CIs) indicate the range within which the true value of the rate will fall, e.g. a 95% CI for all causes of mortality in Wirral of 107.2 to 111.3 means that we can be 95% certain the true value lies between these two figures
5. For more information regarding which ICD-10 codes were used to calculate these figures please see Table 8a

Source: Office for National Statistics ([ONS](#)) and [NOMIS](#)

SECTION 4: MORTALITY

TABLE 4f

TREND IN MORTALITY FROM ALL CAUSES OF DEATH, BY AREA, 2007 TO 2018

Year	Wirral						North West		England	
	Males		Females		Persons		Persons		Persons	
	Number of Deaths	Rate per 100,000	Number of Deaths	Rate per 100,000	Number of Deaths	Rate per 100,000	Number of Deaths	Rate per 100,000	Number of Deaths	Rate per 100,000
2007	1,817	1,549.5	1,905	989.6	3,722	1,210.4	70,512	*	470,721	1,091.7
2008	1,642	1,352.9	1,985	1,033.5	3,627	1,172.3	70,740	*	475,763	1,091.8
2009	1,677	1,355.3	1,894	980.6	3,571	1,137.1	67,937	*	459,241	1,033.7
2010	1,617	1,298.8	1,928	987.5	3,545	1,114.1	67,738	*	461,017	1,017.0
2011	1,589	1,216.1	1,781	890.8	3,370	1,036.3	66,372	*	452,862	978.6
2012	1,639	1,236.9	1,902	938.4	3,541	1,065.9	68,262	*	466,779	987.4
2013	1,766	1,319.4	1,867	911.0	3,633	1,084.8	69,045	1,089.1	473,552	979.2
2014	1,693	1,094.5	1,855	1,115.9	3,548	1,105.6	63,818	957.8	468,875	863.2
2015	1,748	1,255.6	2,021	976.1	3,769	1,096.9	71,299	1,088.7	495,309	986.6
2016	1,807	1,271.3	1,911	923.3	3,718	1,070.4	71,315	1,069.4	490,791	959.8
2017	1,709	1,161.3	1,841	872.8	3,550	1,004.5	71,657	1,059.6	498,882	958.8
2018	1,869	1,251.3	1,920	912.4	3,789	1,062.2	72,278	1,053.1	505,859	957.2

Notes and Definitions

1. The age-standardised mortality rates for 2013 are standardised to the 2013 European Standard Population (expressed as a rate per 100,000 population). Age-standardised rates are used to allow comparison between populations which may contain different proportions of people of different ages. The European standard populations were updated in 2014. This affected the calculation of the 2013 rate and means that figures from 2013 onwards are not comparable with previous years
2. The results are presented as directly age-standardised rates (DSR) per 100,000 population
3. *Figures not available at time of publishing

Source: Office for National Statistics ([ONS](#))

[Back to Contents Page](#)

SECTION 4: MORTALITY

TABLE 4g

MORTALITY FROM ALL CAUSES BY AREA, 2016-18 (3 YEARS POOLED)

Area	Number of Deaths	DSR per 100,000	Lower 95% CI	Upper 95% CI
Bebington	488	910.8	830.0	991.6
Bidston & St James	518	1,537.9	1,405.5	1,670.4
Birkenhead & Tranmere	423	1,319.0	1,193.3	1,444.7
Bromborough	521	1,180.1	1,078.8	1,281.5
Clatterbridge	664	1,113.9	1,029.2	1,198.6
Claughton	535	1,047.9	959.1	1,136.7
Eastham	437	857.7	777.3	938.1
Greasby, Frankby & Irby	422	715.4	647.1	783.6
Heswall	498	708.2	646.0	770.4
Hoylake & Meols	570	921.9	846.2	997.6
Leasowe & Moreton East	471	1,173.2	1,067.2	1,279.1
Liscard	540	1,210.0	1,108.0	1,312.1
Moreton West & Saughall Massie	397	867.5	782.2	952.9
New Brighton	559	1,149.7	1,054.4	1,245.0
Oxton	607	1,308.0	1,203.9	1,412.1
Pensby & Thingwall	434	767.4	695.2	839.6
Prenton	421	897.8	812.0	983.5
Rock Ferry	523	1,525.1	1,394.4	1,655.8
Seacombe	444	1,352.1	1,226.3	1,477.9
Upton	711	1,226.6	1,136.4	1,316.8
Wallasey	413	757.5	684.5	830.6
West Kirby & Thurstaston	454	815.5	740.5	890.5
Not matched to a Wirral ward	753	-	-	-
Wirral	11,050	1,033.6	1,014.3	1,052.8

Notes and Definitions

1. The results are presented as directly age-standardised rates (DSR) per 100,000 population
2. 95% Confidence Intervals (CIs) indicate the range within which the true value of rate lies, e.g. a 95% CI for deaths in Bebington is 830.0 to 991.6, which means that we can be 95% certain that the true value lies somewhere between 830.0 and 991.6
3. Three calendar years have been presented together, to ensure robustness at the small area level shown (ward)

Source: Office for National Statistics ([ONS](#))

SECTION 4: MORTALITY

TABLE 4h

PLACE OF DEATH BY AREA, 2018

Area	Age Group	Hospital (%)	Home (%)	Care Home (%)	Hospice (%)	Other (%)	*DIUPR (%)
Wirral	0-64	52.5	30.5	3.3	7.3	6.4	38.7
	65-74	53.8	29.8	8.9	6.0	1.6	38.0
	75-84	53.4	23.8	19.4	2.6	0.7	42.9
	85+	47.6	13.6	36.5	0.5	1.8	54.5
North West	0-64	47.1	34.9	2.5	9.3	6.3	36.3
	65-74	50.8	29.7	8.3	9.5	1.7	38.6
	75-84	51.1	23.3	19.0	5.5	1.1	42.4
	85+	44.8	15.2	36.6	2.3	1.2	52.7
England	0-64	44.3	34.1	2.8	10.7	8.0	36.2
	65-74	48.5	30.3	8.9	10.1	2.2	39.3
	75-84	48.9	24.2	19.4	5.9	1.5	43.6
	85+	42.0	17.0	37.6	2.3	1.1	54.9

Notes and Definitions

1. DIUPR stands for Death in Usual Place of Residence. This can include home, care homes (local authority and non-local authority) and religious establishments
2. *Please note that figures for Death in Usual Place of Residence refers to the year 2017. The remaining categories all refer to the year 2018
3. Percentages have been rounded so may not exactly sum

Source: *Palliative and End of Life Care Profiles*, [Public Health England \(PHE\)](#)

SECTION 5: ECONOMY AND BUSINESS

TABLE 5a

TREND IN AVERAGE PERSONAL INCOME BY GENDER, BY WIRRAL AND ENGLAND, 2009 TO 2019

Year	Wirral			England		
	Male	Female	Persons	Male	Female	Persons
2009	£27,096	£16,231	£20,190	£27,032	£16,250	£21,680
2010	£26,270	£16,487	£21,211	£26,732	£16,431	£21,564
2011	£24,933	£16,201	£20,644	£26,807	£16,271	£21,454
2012	£26,365	£15,952	£21,317	£27,040	£16,750	£21,813
2013	£27,016	£17,271	£21,433	£27,588	£17,090	£22,168
2014	£27,642	£16,745	£21,551	£27,575	£17,226	£22,350
2015	£28,958	£16,664	£22,279	£28,000	£17,437	£22,654
2016	£27,882	£17,320	£22,167	£28,779	£18,000	£23,337
2017	£28,735	£17,637	£22,350	£29,246	£18,270	£23,754
2018	£27,177	£18,907	£22,953	£29,791	£18,716	£24,283
2019	£30,352	£19,717	£24,172	£30,717	£19,607	£25,118

Notes and Definitions

1. Figures for income are median, annual, gross figures
2. The median is the value below which 50% of employees fall. It is preferred over the mean for earnings data as it is influenced less by extreme values and because of the skewed distribution of earnings data
3. Figures are for all workers, regardless of whether full or part-time. This contributes to lower overall figures for women, because as well as earning less than men, women are also more likely to be in part-time work
4. The figures for persons are *not* the mean average of the male and female figures. This is because these calculations are weighted based on the population of each gender in employment. For example, 60% of all people in employment in Wirral may be male and 40% may be female; therefore, a greater weighting is given to the male income figure rather than the female

Source: [NOMIS](#)

SECTION 5: ECONOMY AND BUSINESS

TABLE 5b

AVERAGE HOUSEHOLD INCOME, BY AREA, 2016

Area	Number of Households	Average Household Income (£'s)
Bebington	7,336	36,699
Bidston & St James	7,185	22,534
Birkenhead & Tranmere	8,712	23,602
Bromborough	7,476	31,295
Clatterbridge	6,916	44,273
Cloughton	7,339	34,377
Eastham	6,654	36,656
Greasby, Frankby & Irby	6,648	42,371
Heswall	6,254	53,286
Hoylake & Meols	6,299	47,862
Leasowe & Moreton East	6,854	29,249
Liscard	7,385	27,199
Moreton West & Saughall Massie	6,686	33,155
New Brighton	7,368	31,242
Oxton	6,787	35,594
Pensby & Thingwall	6,108	38,411
Prenton	6,933	35,985
Rock Ferry	6,822	24,294
Seacombe	7,711	23,985
Upton	7,718	29,045
Wallasey	7,093	37,625
West Kirby & Thurstaston	6,125	53,336
Birkenhead Constituency	43,778	29,398
Wallasey Constituency	43,097	30,409
Wirral South Constituency	34,636	40,442
Wirral West Constituency	32,898	42,205
Wirral	154,409	34,563
England	22,826,121	37,521

Notes and Definitions

1. The figures in this table were calculated using Mosaic Public Sector 2016 estimates and ONS population data
2. Due to changes in methodology, these figures cannot be compared to those published in previous versions

Source: [Mosaic Public Sector](#)

SECTION 5: ECONOMY AND BUSINESS

TABLE 5c

CLAIMANT COUNT, NUMBER AND PERCENTAGE BY WORKING-AGE POPULATION BY GENDER AND AREA, MARCH 2020

Area	Male		Female		Persons	
	Number	%	Number	%	Total	%
Bebington	115	2.5	75	1.6	195	2.1
Bidston & St James	400	9.0	280	5.2	685	6.9
Birkenhead & Tranmere	715	13.3	415	7.5	1,135	10.3
Bromborough	190	3.9	130	2.5	315	3.2
Clatterbridge	60	1.5	35	0.8	90	1.2
Claughton	220	5.0	110	2.5	325	3.7
Eastham	90	2.2	55	1.4	145	1.8
Greasby, Frankby & Irby	55	1.5	45	1.1	100	1.3
Heswall	30	0.9	30	0.8	60	0.9
Hoylake & Meols	95	2.4	50	1.2	140	1.8
Leasowe & Moreton East	220	5.2	155	3.3	375	4.2
Liscard	345	7.0	175	3.4	515	5.2
Moreton West & Saughall Massie	115	2.8	75	1.8	190	2.3
New Brighton	220	4.6	105	2.2	320	3.4
Oxton	155	3.6	90	2.2	245	2.9
Pensby & Thingwall	65	1.9	30	0.9	100	1.4
Prenton	175	4.0	80	1.7	255	2.9
Rock Ferry	370	8.5	230	4.8	600	6.6
Seacombe	485	10.3	295	5.8	780	8.0
Upton	185	4.1	135	2.6	320	3.3
Wallasey	100	2.3	70	1.5	165	1.9
West Kirby & Thurstaston	50	1.5	45	1.2	95	1.3
Birkenhead Constituency	2,040	7.5	1,205	4.2	3,240	5.8
Wallasey Constituency	1,480	5.5	870	3.1	2,350	4.2
South Wirral Constituency	485	2.3	325	1.5	810	1.9
West Wirral Constituency	450	2.4	300	1.5	755	1.9
Wirral	4,455	4.7	2,700	2.7	7,155	3.7
North West	102,245	4.5	68,375	3.0	170,625	3.8
England	622,745	3.6	446,665	2.5	1,069,415	3.1

Notes and Definitions

1. Some totals may not exactly sum due to rounding (figures rounded to the nearest 5)
2. The claimant count measures the number of people claiming benefit principally for the reason of being unemployed. The claimant count includes all out of work Universal Credit claimants, as well as all Job Seeker's Allowance (JSA) claimants
3. Ideally only those Universal Credit claimants who are out of work and required to seek work *should* be included in the Claimant Count, but it is not currently possible to produce figures on this basis. The Claimant Count therefore currently includes some claimants of Universal Credit who are not required to look for work, for example due to illness or disability. The Claimant Count also includes people who do not receive payment. For example, some claimants will have had their benefits stopped for a limited period by Jobcentre Plus and some people claim JSA to receive National Insurance Credits only

Source: [NOMIS](#)

SECTION 5: ECONOMY AND BUSINESS

TABLE 5d

NUMBER OF EMPLOYMENT SUPPORT ALLOWANCE (ESA) & INCAPACITY/SEVERE DISABLEMENT ALLOWANCE CLAIMANTS BY CONDITION AND AREA, AUGUST 2019

Ward	Constituency	Mental conditions	Nervous system	Respiratory or Circulatory	Musculo-skeletal	Injury, poisoning	Other	Total
Bebington	Wirral South	238	25	37	51	6	122	479
Bidston & St James	Birkenhead	643	93	113	179	28	270	1,326
Birkenhead & Tranmere	Birkenhead	948	84	93	171	22	285	1,603
Bromborough	Wirral South	400	43	45	94	14	162	758
Clatterbridge	Wirral South	141	34	13	25	..	79	292
Cloughton	Birkenhead	378	62	48	69	17	146	720
Eastham	Wirral South	166	26	32	44	8	92	368
Greasby, Frankby & Irby	Wirral West	94	21	22	43	5	82	267
Heswall	Wirral South	61	17	5	8	6	42	139
Hoylake & Meols	Wirral West	175	35	14	24	8	74	330
Leasowe & Moreton East	Wallasey	427	55	69	116	10	161	838
Liscard	Wallasey	476	50	53	102	15	147	843
Moreton West & Saughall Massie	Wallasey	230	44	39	53	9	132	507
New Brighton	Wallasey	471	64	22	72	16	176	821
Oxton	Birkenhead	270	39	41	61	6	117	534
Pensby & Thingwall	Wirral West	156	38	29	55	8	84	370
Prenton	Birkenhead	285	47	35	66	9	115	557
Rock Ferry	Birkenhead	602	56	75	137	31	212	1,113
Seacombe	Wallasey	623	70	86	116	18	232	1,145
Upton	Wirral West	404	57	76	123	25	178	863
Wallasey	Wallasey	154	45	23	57	7	106	392
West Kirby & Thurstaston	Wirral West	95	32	18	28	6	60	239
Total	Wirral	7,437	1,037	988	1,694	274	3,074	14,504

Notes and Definitions

1. Table shows Employment & Support Allowance or ESA (which replaced Incapacity Benefit in January 2011) plus those still on Incapacity Benefit and Severe Disablement Allowance (due to not yet having been assessed and moved onto ESA)
2. These benefits are paid to people aged between 16-59/64 (ESA) or 16+ (IB/SDA) who cannot work due to illness and disability

Source: [StatXplore](#)

SECTION 5: ECONOMY AND BUSINESS

TABLE 5e

BREAKDOWN OF EMPLOYEE JOBS BY INDUSTRY, BY AREA, 2018

Industry	Wirral		North West	Great Britain
	Employee Jobs	%	%	%
Mining and Quarrying	0	0.0	0.1	0.2
Manufacturing	8,000	7.9	9.6	8.1
Electricity, Gas, Steam and Air Conditioning Supply	400	0.4	0.5	0.5
Water Supply, Sewerage, Waste Management and Remediation Activities	700	0.7	0.6	0.7
Construction	4,000	4.0	4.7	4.7
Wholesale and Retail Trade, Repair of Motor Vehicles and Motorcycles	16,000	15.8	16.9	15.2
Transportation and Storage	3,500	3.5	5.5	4.8
Accommodation and Food Service Activities	7,000	6.9	7.1	7.6
Information and Communication	1,500	1.5	2.7	4.2
Financial and Insurance Activities	1,000	1.0	2.7	3.5
Real Estate Activities	1,500	1.5	1.5	1.7
Professional, Scientific and Technical Activities	8,000	7.9	8.3	8.7
Administrative and Support Service Activities	7,000	6.9	9.0	9.1
Public Administration and Defence, Compulsory Social Security	5,000	5.0	4.5	4.3
Education	10,000	9.9	8.5	8.9
Human Health and Social Work Activities	23,000	22.8	13.4	13.2
Arts, Entertainment and Recreation	2,500	2.5	2.4	2.5
Other Service Activities	2,500	2.5	1.9	2.0
Total	101,600	100.0	100.0	100.0

Notes and Definitions

1. These figures have been rounded to the nearest 10
2. Employee jobs excludes self-employed, government-supported trainees and HM Forces
3. This data excludes the category of farm-based agriculture. The percentage is a proportion of total employee jobs excluding those of farm-based agriculture
4. Percentages may not sum due to rounding

Source: [NOMIS](#)

SECTION 5: ECONOMY AND BUSINESS

TABLE 5f

EMPLOYMENT BY OCCUPATION, BY AREA, 2019

Occupation	Wirral (Number)	%		
		Wirral	North West	England
1) Manager, Directors and Senior Officials	16,900	11.1	10.3	11.7
2) Professional Occupations	30,400	20.0	20.2	21.5
3) Associate Professional and Technical	20,200	13.3	13.3	14.7
SOC 2010 Major Group 1-3	67,500	44.4	43.8	47.9
4) Administrative and Secretarial	15,100	10.0	10.2	9.6
5) Skilled Trades Occupations	13,600	9.0	10.0	9.9
SOC 2010 Major Group 4-5	28,700	19.0	20.2	19.5
6) Caring, Leisure and Other Service Occupations	14,700	9.7	9.7	8.9
7) Sales and Customer Service Occupations	16,700	11.0	8.3	7.0
SOC 2010 Major Group 6-7	31,400	20.7	18.0	15.9
8) Process Plant and Machine Operatives	7,600	5.0	6.7	6.2
9) Elementary Occupations	15,500	10.2	11.1	10.2
SOC 2010 Major Group 8-9	23,100	15.2	17.8	16.4
Total in Employment	150,700	100.0	100.0	100.0

Notes and Definitions

1. Numbers and percentages are for those aged 16+
2. These figures have been rounded to the nearest 100. Likewise, the percentages have also been rounded so may not sum
3. Occupations are classified according to the Standard Occupation Classification 2010. Descriptions of the job titles included in each code are available in the [SOC manuals](#)
4. This data refers to the period between January 2019 and December 2019 inclusive

Source: [NOMIS](#)

SECTION 5: ECONOMY AND BUSINESS

TABLE 5g

SURVIVAL OF NEWLY BORN ENTERPRISES, BY BIRTH OF UNITS IN 2013 AND THEIR SURVIVAL RATES, 2013 TO 2018, BY AREA

Area	Births in 2013	1-year survival	1-year %	2-year survival	2-year %	3-year survival	3-year %	4-year survival	4-year %	5-year survival	5-year %
Wirral	1,400	1,335	95.4	1,065	76.1	860	61.4	715	51.1	600	42.9
North West	35,285	33,190	94.1	26,240	74.4	21,080	59.7	17,940	50.8	14,775	41.9
England	308,565	288,765	93.6	231,765	75.1	187,815	60.9	158,060	51.2	131,075	42.5

Notes and Definitions

1. An enterprise birth is identified as a business that was present in 2013 but did not exist in 2012 or 2011. Births are identified by making comparison of annual active population files and identifying those present in the latest file, but not the two previous ones
2. An enterprise death is defined as a business that was on the active file in a given year (e.g. 2014) but was no longer present in the active file in both of the following two years (e.g. 2015 and 2016). In order to provide an early estimate of deaths, an adjustment has been made to the latest two years deaths to allow for reactivations. These figures are provisional and subject to revision

Source: Office for National Statistics ([ONS](#))

SECTION 5: ECONOMY AND BUSINESS

TABLE 5h

TREND IN JOB DENSITY, BY AREA, 2000 TO 2018

Year	Wirral (Number of Jobs)	Job density		
		Wirral	North West	England
2000	112,000	0.58	0.75	0.80
2001	112,000	0.58	0.76	0.80
2002	113,000	0.59	0.77	0.80
2003	118,000	0.60	0.77	0.80
2004	115,000	0.59	0.78	0.80
2005	113,000	0.58	0.76	0.81
2006	111,000	0.57	0.76	0.79
2007	111,000	0.56	0.76	0.80
2008	111,000	0.56	0.75	0.79
2009	109,000	0.55	0.74	0.77
2010	110,000	0.55	0.73	0.77
2011	112,000	0.56	0.74	0.78
2012	111,000	0.56	0.75	0.79
2013	113,000	0.57	0.77	0.80
2014	112,000	0.57	0.78	0.82
2015	119,000	0.61	0.80	0.84
2016	113,000	0.58	0.82	0.86
2017	125,000	0.64	0.83	0.87
2018	118,000	0.61	0.84	0.87

Notes and Definitions

1. This table shows the rate of jobs per resident aged 16-64. For example, a job density of 1.0 would mean that there is one job for every resident aged 16-64
2. The total number of jobs is a workplace-based measure and comprises employee jobs, self-employed, government-supported trainees and HM Forces
3. The number of residents aged 16-64 figures used to calculate jobs densities are based on the relevant mid-year population estimates

Source: [NOMIS](#)

SECTION 5: ECONOMY AND BUSINESS

TABLE 5i

NUMBER OF EMPLOYEES IN THE PUBLIC AND PRIVATE SECTOR, BY AREA, 2016 TO 2018

Year	Wirral		North West		England	
	Number	%	Number	%	Number	%
Private Sector Employees						
2016	75,556	75.8%	2,641,414	81.4%	21,278,860	83.5%
2017	76,388	73.6%	2,691,883	81.6%	21,611,162	83.7%
2018	76,426	75.3%	2,721,883	81.8%	21,742,242	83.7%
Public Sector Employees						
2016	24,120	24.2%	604,787	18.6%	4,198,565	16.5%
2017	27,355	26.4%	606,334	18.4%	4,217,464	16.3%
2018	25,013	24.7%	607,027	18.2%	4,234,006	16.3%

Notes and Definitions

1. The figures include businesses registered for PAYE but not for VAT and so are not continuous with BRES datasets for years prior to 2015
2. Further information regarding the inclusion of PAYE-only businesses is provided in this BRES news article published on 2 October 2017 at <https://www.nomisweb.co.uk/articles/1062.aspx>

Source: [NOMIS](#)**SECTION 5: ECONOMY AND BUSINESS**

TABLE 5j

INDICATORS OF GROSS VALUE ADDED (GVA), BY AREA, 2016 TO 2018

Area	Year	Total GVA (£ million)	GVA per head (£ per head)
Wirral	2016	4,711	14,622
	2017	5,100	15,801
	2018	4,996	15,456
North West	2016	170,053	23,540
	2017	177,481	24,451
	2018	183,162	25,118
England	2016	1,534,076	27,757
	2017	1,593,315	28,647
	2018	1,643,271	29,356

Notes and Definitions

1. Gross Value Added (GVA) is the value generated by any unit engaged in the production of goods and services. GVA per head is a useful way of comparing regions of different sizes. It is not, however, a measure of regional productivity
2. Figures for 2018 are provisional and should be treated with caution

Source: Office for National Statistics ([ONS](#))

SECTION 5: ECONOMY AND BUSINESS

TABLE 5k

INDICATORS OF TOURISM TO THE LOCAL ECONOMY, 2009 TO 2018

Year	Value of Tourism Economy (£m)	Visitor numbers (millions)	Day Visitors (millions)	Overnight Stays (thousands)
2009	251.53	6.65	5.98	662.67
2010	268.19	6.54	5.80	737.45
2011	289.01	6.78	6.03	752.69
2012	313.42	6.98	6.19	792.47
2013	327.85	7.08	6.31	777.87
2014	355.47	7.59	6.80	788.07
2015	385.77	8.21	7.42	788.00
2016	402.41	8.48	7.69	798.89
2017	426.35	8.80	7.98	814.48
2018	455.83	9.05	8.21	839.50

Notes and Definitions

- Global Tourism Solutions use the STEAM model which quantifies the local economic impact of tourism, from both staying and day visitors, through analysis and use of a variety of inputs including visitor attraction numbers, tourist accommodation bed stock, events attendance, occupancy levels, accommodation tariffs, retail footfall, Civil Aviation Authority data, macro-economic factors, visitor expenditure levels, transport use levels and tourism-specific economic multipliers
- STEAM uses the above input data to generate a series of impact analyses, relating to four key visitor types:
 - Staying in Serviced Accommodation
 - Staying in Non-Serviced Accommodation
 - Staying with Friends and Relatives (SFR)
 - Tourist Day Visitors
- The value of the economy is calculated using local and national survey data that shows spend including the International Passenger Survey, GB Visitor Survey and GB Day Visitor Survey. Achieved room rates for local hotels will also be included that are sampled by STR (formerly known as Smith Travel Research). STR track supply and demand data for the hotel industry and provide valuable market share analysis for international, regional hotel chains and independent hotels

Source: [STEAM Model](#)

SECTION 6: TRANSPORT, HOUSING AND THE ENVIRONMENT

TABLE 6a

TREND OF NEW DWELLINGS COMPLETED IN WIRRAL AND ENGLAND, 2011/12 - 2018/19

Period	Wirral		England Percentage (%)
	Number	Percentage (%)	
2011/12	170	0.1	0.5
2012/13	170	0.1	0.4
2013/14	200	0.1	0.5
2014/15	260	0.2	0.5
2015/16	150	0.1	0.6
2016/17	160	0.1	0.6
2017/18	400	0.3	0.7
2018/19	380	0.3	0.7

Notes and Definitions

1. This table shows the number of new dwellings (rounded to the nearest 10) and new dwellings as a percentage of all dwellings

Source: [LGInform](#)

SECTION 6: TRANSPORT, HOUSING AND THE ENVIRONMENT

TABLE 6b

PROJECTED NUMBER OF HOUSES, BY AREA, 2019 TO 2039

Area	Houses (thousands)					% change 2019-2039
	2019	2024	2029	2034	2039	
Wirral	143.4	145.4	146.9	148.2	149.3	4.1%
North West	3,134.3	3,201.1	3,255.7	3,307.1	3,358.9	7.2%
England	23,385.9	24,092.1	24,710.6	25,277.7	25,808.9	10.4%

Notes and Definitions

1. Housing projections are usually updated every 2 years. The 2018-based projections which were due to be published in early 2020 have now been delayed. This means the most recent projections (shown above) are 2016-based figures. It should also be noted that these 2016-based estimates differ from older estimates which some departments within local authorities are still obliged to use in certain circumstances (e.g. planning teams use the 2014-based projections)

Source: Office for National Statistics ([ONS](#))

SECTION 6: TRANSPORT, HOUSING AND THE ENVIRONMENT

TABLE 6c

HOUSEHOLDS WITH NO ACCESS TO A VEHICLE, BY AREA, 2011

Area	Households	No cars or vans in household	Percentage of area (%)
Bebington	6,645	1,439	21.7
Bidston & St James	6,889	3,488	50.6
Birkenhead & Tranmere	7,747	4,309	55.6
Bromborough	6,690	1,927	28.8
Clatterbridge	5,924	662	11.2
Cloughton	6,285	1,719	27.4
Eastham	5,955	1,199	20.1
Greasby, Frankby & Irby	5,978	721	12.1
Heswall	5,808	579	10.0
Hoylake & Meols	5,713	1,034	18.1
Leasowe & Moreton East	6,390	2,021	31.6
Liscard	6,891	2,420	35.1
Moreton West & Saughall Massie	6,176	1,243	20.1
New Brighton	6,784	2,115	31.2
Oxton	6,592	1,458	22.1
Pensby & Thingwall	5,803	962	16.6
Prenton	6,051	1,510	25.0
Rock Ferry	6,465	3,010	46.6
Seacombe	6,871	3,156	45.9
Upton	7,127	2,283	32.0
Wallasey	6,313	1,226	19.4
West Kirby & Thurstaston	5,486	910	16.6
Birkenhead Constituency	40,029	15,494	38.7
Wallasey Constituency	39,425	12,181	30.9
Wirral South Constituency	31,022	5,806	18.7
Wirral West Constituency	30,107	5,910	19.6
Wirral	140,583	39,391	28.0

Notes and Definitions

1. This table shows the proportion of households who indicated in the 2011 Census, that their household had no access to a car or a van. This includes company cars and vans available for private use
2. Please note that a new Census will be conducted in 2021. Data from this new Census will be released in line with the ONS data release timetable when available

Source: Census 2011, via [NOMIS](#)

SECTION 6: TRANSPORT, HOUSING AND THE ENVIRONMENT

TABLE 6d

PROPORTION OF PEOPLE AGED OVER 65 YEARS LIVING ALONE, BY AREA, 2011

Area	All Persons Aged 65+		
	Population	Numbers living alone	Percentage living alone (%)
Bebington	3,171	1,085	34.2
Bidston & St James	2,048	834	40.7
Birkenhead & Tranmere	1,702	851	50.0
Bromborough	2,555	881	34.5
Clatterbridge	3,566	815	22.9
Cloughton	2,826	813	28.8
Eastham	3,022	950	31.4
Greasby, Frankby & Irby	3,307	962	29.1
Heswall	3,848	1,049	27.3
Hoylake & Meols	2,991	985	32.9
Leasowe & Moreton East	2,418	910	37.6
Liscard	2,621	934	35.6
Moreton West & Saughall Massie	2,641	912	34.5
New Brighton	2,603	1,032	39.6
Oxton	2,742	932	34.0
Pensby & Thingwall	3,374	1,107	32.8
Prenton	2,691	830	30.8
Rock Ferry	2,019	795	39.4
Seacombe	1,935	783	40.5
Upton	3,174	1,160	36.5
Wallasey	3,042	1,001	32.9
West Kirby & Thurstaston	3,131	1,000	31.9
Birkenhead Constituency	14,028	5,055	36.0
Wallasey Constituency	15,260	5,572	36.5
South Wirral Constituency	16,162	4,780	29.6
West Wirral Constituency	15,977	5,214	32.6
Wirral	61,427	20,621	33.6
North West	1,252,600	386,650	30.9
England	9,305,200	2,725,596	29.3

Notes and Definitions

1. Living alone is defined as households which consist of one person living alone, or a group of people (not related) living at the same address sharing cooking facilities and a living room, sitting room or dining area
2. A household must contain at least one person whose place of usual residence is at the address. A group of short-term residents living together is not classified as a household, neither is a group of people at an address where only visitors are staying
3. Please note that a new Census will be conducted in 2021. Data from this new Census will be released in line with the ONS data release timetable when available

Source: Census 2011, via [NOMIS](#)

SECTION 6: TRANSPORT, HOUSING AND THE ENVIRONMENT

TABLE 6e

INDEX OF MULTIPLE DEPRIVATION BY AREA, 2019

Ward	Ward Ranking (Wirral)	Constituency	IMD 2019 Score (National)	Employment Score (%)	Income Score (%)
Birkenhead & Tranmere	1	Birkenhead	61.81	0.30	0.37
Bidston & St James	2	Birkenhead	61.80	0.31	0.39
Seacombe	3	Wallasey	58.70	0.27	0.34
Rock Ferry	4	Birkenhead	54.20	0.27	0.33
Leasowe & Moreton East	5	Wallasey	40.95	0.21	0.24
Liscard	6	Wallasey	39.06	0.18	0.21
Claughton	7	Birkenhead	37.81	0.19	0.21
Upton	8	Wirral West	33.75	0.17	0.21
New Brighton	9	Wallasey	32.02	0.16	0.18
Bromborough	10	Wirral South	31.36	0.15	0.17
Prenton	11	Birkenhead	27.28	0.15	0.16
Moreton West & Saughall Massie	12	Wallasey	24.93	0.12	0.15
Oxton	13	Birkenhead	20.98	0.11	0.12
Eastham	14	Wirral South	17.31	0.09	0.10
Bebington	15	Wirral South	17.07	0.10	0.10
Wallasey	16	Wallasey	15.53	0.09	0.09
Pensby & Thingwall	17	Wirral West	15.27	0.10	0.10
West Kirby & Thurstaston	18	Wirral West	12.64	0.08	0.08
Hoylake & Meols	19	Wirral West	12.40	0.08	0.08
Clatterbridge	20	Wirral South	11.39	0.07	0.06
Greasby, Frankby & Irby	21	Wirral West	9.49	0.07	0.06
Heswall	22	Wirral South	6.29	0.05	0.04
Wirral			29.43	0.15	0.17

Notes and Definitions

1. The Index of Multiple Deprivation (2019) is the most recent measure of deprivation in England
2. Wirral overall was ranked 77th of all local authorities in England on the 2019 IMD (1 is most deprived, 317 is least deprived)
3. Ward Ranking (Wirral) shows Wirral wards ranked against each other (1 is most deprived, 22 is least deprived)
4. Income deprivation is a measure of the proportion of families on very low incomes, whether they are in or out of work. The scores in the Income and Employment Domains range from 0 to 1 and correspond to percentage rates. So, for example, a score of 0.30 in Birkenhead & Tranmere indicates that 30% of residents in that ward are income deprived

Source: [Ministry of Housing, Communities and Local Government](#)

SECTION 6: TRANSPORT, HOUSING AND THE ENVIRONMENT

TABLE 6f

ESTIMATED NUMBER OF HOUSEHOLDS IN FUEL POVERTY BY AREA, 2018

Area	Estimated number of households in fuel poverty	Estimated number of households	Percentage of households in fuel poverty (%)
Bebington	776	6,913	11.2%
Bidston & St James	1,166	6,749	17.3%
Birkenhead & Tranmere	1,603	9,954	16.1%
Bromborough	909	7,659	11.9%
Clatterbridge	521	5,806	9.0%
Claughton	686	5,954	11.5%
Eastham	564	5,570	10.1%
Greasby, Frankby & Irby	589	6,459	9.1%
Heswall	609	7,364	8.3%
Hoyle & Meols	706	7,145	9.9%
Leasowe & Moreton East	810	6,135	13.2%
Liscard	1,273	8,091	15.7%
Moreton West & Saughall Massie	733	7,031	10.4%
New Brighton	821	6,077	13.5%
Oxton	620	6,233	9.9%
Pensby & Thingwall	395	3,844	10.3%
Prenton	463	3,951	11.7%
Rock Ferry	1,386	9,425	14.7%
Seacombe	1,198	7,194	16.7%
Upton	873	7,603	11.5%
Wallasey	826	6,735	12.3%
West Kirby & Thurstaston	459	5,210	8.8%
Birkenhead Constituency	5,924	42,266	14.0%
Wallasey Constituency	5,661	41,263	13.7%
Wirral South Constituency	3,379	33,312	10.1%
Wirral West Constituency	3,022	30,261	10.0%
Wirral	17,986	147,102	12.2%
North West	382,676	3,151,407	12.1%
England	2,400,297	23,411,370	10.3%

Notes and Definitions

1. Ward-level data has been aggregated up from LSOA-level and therefore may not be fully accurate
2. Household and fuel poverty numbers at region level come from the national fuel poverty statistics, 2018.
3. More detailed information on the methodology used to model fuel poverty rates is available on the DBEIS website at: <https://www.gov.uk/government/organisations/department-for-business-energy-and-industrial-strategy>

Source: Department for Business, Energy & Industrial Strategy ([DBEIS](#))

SECTION 6: TRANSPORT, HOUSING AND THE ENVIRONMENT

TABLE 6g

TREND IN MEDIAN HOUSING AFFORDABILITY RATIO, BY AREA, 2007 TO 2019

Year	Wirral			North West			England		
	House Price	Annual Wage	Affordability Ratio	House Price	Annual Wage	Affordability Ratio	House Price	Annual Wage	Affordability Ratio
2007	£138,825	£23,128	6.00	£130,000	£22,833	5.69	£175,000	£24,500	7.14
2008	£137,500	£23,612	5.82	£130,000	£23,864	5.45	£177,000	£25,558	6.93
2009	£130,000	£24,916	5.22	£125,000	£24,011	5.21	£167,500	£26,145	6.41
2010	£135,000	£26,073	5.18	£130,000	£24,291	5.35	£181,000	£26,276	6.89
2011	£134,000	£25,578	5.24	£125,000	£24,166	5.17	£180,000	£26,500	6.79
2012	£135,000	£25,730	5.25	£125,000	£24,646	5.07	£180,000	£26,826	6.71
2013	£135,000	£26,712	5.05	£125,000	£25,309	4.94	£184,000	£27,375	6.72
2014	£140,000	£27,545	5.08	£134,000	£25,324	5.29	£191,000	£27,500	6.95
2015	£142,000	£28,106	5.05	£138,000	£25,711	5.37	£204,000	£27,838	7.33
2016	£149,000	£28,183	5.29	£143,000	£26,220	5.45	£215,000	£28,500	7.54
2017	£152,000	£27,561	5.52	£150,000	£26,660	5.63	£225,000	£29,085	7.74
2018	£159,950	£27,708	5.77	£155,000	£27,520	5.63	£230,000	£29,849	7.71
2019	£162,500	£29,500	5.51	£159,000	£28,487	5.58	£232,000	£30,661	7.57

Notes and Definitions

1. Housing affordability ratios are calculated by dividing median house prices for existing dwellings, by median gross annual residence-based earnings
2. A larger housing affordability ratio means that an area is less affordable for a resident to purchase a house in their local authority district, whereas a smaller ratio means that an area is more affordable

Source: Office for National Statistics ([ONS](#))

SECTION 6: TRANSPORT, HOUSING AND THE ENVIRONMENT

TABLE 6h

ROAD COLLISION CASUALTIES, BY AREA OF COLLISION, 2017-19 (3 YEARS POOLED)

Area of Collision	Total Number of Casualties	% Killed or Seriously Injured	% Killed or Seriously Injured (Child)
Bebington	59	22.0	0.0
Bidston & St James	141	16.3	0.7
Birkenhead & Tranmere	180	16.1	2.8
Bromborough	114	19.3	2.6
Claughton	83	12.0	0.0
Clatterbridge	59	23.7	5.1
Eastham	68	11.8	0.0
Greasby, Frankby & Irby	46	13.0	2.2
Heswall	34	32.4	0.0
Hoylake & Meols	54	25.9	1.9
Leasowe & Moreton East	70	10.0	2.9
Liscard	82	15.9	2.4
Moreton West & Saughall Massie	61	9.8	0.0
New Brighton	45	13.3	2.2
Oxton	56	12.5	0.0
Pensby & Thingwall	45	17.8	2.2
Prenton	74	25.7	5.4
Rock Ferry	90	21.1	1.1
Seacombe	87	19.5	1.1
Upton	73	11.0	0.0
Wallasey	64	26.6	6.3
West Kirby & Thurstaston	40	20.0	2.5
Birkenhead Constituency	600	18.5	2.3
Wallasey Constituency	409	16.1	2.4
Wirral South Constituency	358	17.9	0.8
Wirral West Constituency	258	17.1	1.6
Wirral	1,625	17.5	1.9

Notes and Definitions

1. The data in this table is based on the information collected by Merseyside Police at the scene of the collision using the STATS-19 form. This is used to record the details of the incident and the circumstances surrounding it
2. Data is based on the location of the collision, rather than the usual place of residence of the collision victim
3. Data presented is for 3 pooled years to smooth out the random year-on-year variations which can characterise small datasets

Source: Wirral Accident Investigation Unit, Wirral Council

SECTION 6: TRANSPORT, HOUSING AND THE ENVIRONMENT

TABLE 6i

CARBON DIOXIDE (CO₂) EMISSION ESTIMATES, BY INDUSTRY, BY AREA, 2005 TO 2017

Year	Wirral			North West	England	
	Type of Industry			Per Capita Emissions (t)		
	Industry and Commercial Total (kt)	Domestic Total (kt)	Transport Total (kt)			
2005	650.5	823.2	356.3	5.8	7.1	7.1
2006	648.2	813.4	343.9	5.7	7.0	7.1
2007	645.1	780.1	344.7	5.6	6.8	6.8
2008	604.7	778.4	329.4	5.4	6.6	6.7
2009	506.9	702.8	315.2	4.8	6.0	6.0
2010	540.3	742.9	309.9	5.0	6.2	6.3
2011	441.3	641.6	306.7	4.3	5.5	5.6
2012	501.2	691.9	300.6	4.7	5.9	5.9
2013	492.4	669.4	294.8	4.5	5.7	5.7
2014	408.4	554.9	298.5	3.9	5.0	5.0
2015	389.4	535.0	299.6	3.8	4.8	4.8
2016	379.0	515.8	300.8	3.7	4.5	4.6
2017	342.4	491.7	289.8	3.5	4.3	4.3

Notes and Definitions

1. The data show emissions allocated on an “end-user” basis where emissions are distributed according to the point of energy consumption (or point of emission if not energy related). Except for the energy industry, emissions from the production of goods are assigned to where the production takes place. Therefore, emissions from the production of goods which are exported will be included, and emissions from the production of goods which are imported are excluded
2. Carbon dioxide (CO₂) is the main greenhouse gas, accounting for about 81 per cent of the UK greenhouse gas emissions in 2017. In recent years, increasing emphasis has been placed on the role of regional bodies and local government in contributing to energy efficiency improvements, and hence reductions in carbon dioxide emissions
3. The unit of measurements used in this table are kiloton (kt) and ton (t)

Source: Department for Business, Energy, and Industrial Strategy ([DBEIS](#))

SECTION 6: TRANSPORT, HOUSING AND THE ENVIRONMENT

TABLE 6j

ANNUAL MEAN OF AIR POLLUTANTS, BY MONITORING STATION IN WIRRAL, 2015 TO 2020

Year	Birkenhead Borough Road - Annual Mean		Tranmere Bebington Road - Annual Mean	
	Nitric oxide $\mu\text{g}/\text{m}^3$	Nitrogen dioxide $\mu\text{g}/\text{m}^3$	Nitric oxide $\mu\text{g}/\text{m}^3$	Nitrogen dioxide $\mu\text{g}/\text{m}^3$
2015	-	-	3	20
2016	18	31	5	22
2017	9	23	3	17
2018	8	24	3	18
2019	8	23	3	18
2020	7	18	2	13
<i>Limit (not to be exceeded)</i>	30	40	30	40

Notes and Definitions

1. National air quality objectives and European Directive limit and target values for the protection of human health. Nitrogen Dioxide 200 $\mu\text{g}/\text{m}^3$ not to be exceeded more than 18 times a year. 40 $\mu\text{g}/\text{m}^3$ annual mean. Nitrogen Oxides 30 $\mu\text{g}/\text{m}^3$ annual mean
2. Hourly Nitrogen Dioxide $\mu\text{g}/\text{m}^3$ has not exceeded 200 $\mu\text{g}/\text{m}^3$ at any time during 2019 and is consistently banded as Low with the accompanying health message for at-risk individuals and the general population to 'Enjoy your usual outdoor activities'. This means no restrictions on outdoor physical activity
3. Wirral has 2 monitoring network sites; Borough Road, Birkenhead and Bebington Road, Tranmere

Source: [UK AIR, Air Information Resource, Department for Environmental Food and Rural Affairs](#)

SECTION 7: CRIME AND SAFETY

TABLE 7a

TOTAL RECORDED CRIME TYPES IN WIRRAL, BY CONSTITUENCY, JANUARY 2019 – DECEMBER 2019

Crime Type	Constituency				Wirral
	Birkenhead	Wallasey	Wirral South	Wirral West	
Anti-social behaviour	2,283	1,433	775	797	5,288
Bicycle theft	72	59	44	37	212
Burglary	594	416	339	249	1,598
Criminal damage and arson	1,296	976	453	389	3,114
Drugs	679	332	88	104	1,203
Other crime	250	159	63	65	537
Other theft	663	375	296	244	1,578
Possession of weapons	110	57	18	19	204
Public order	1,157	671	355	295	2,478
Robbery	74	40	15	16	145
Shoplifting	872	360	183	169	1,584
Theft from the person	107	60	18	19	204
Vehicle crime	522	462	278	236	1,498
Violence and sexual offences	4,582	2,994	1,438	1,195	10,209
Total of all crimes	13,261	8,394	4,363	3,834	29,852

Notes and Definitions

1. A full list of the definitions of each of the crime types can be found [here](#). Some key definitions to note however are:
 - **Robbery:** Includes offences where a person uses force or threat of force to steal
 - **Theft from the person:** Includes crime that involve theft directly from the victim but without the use of threat or force
 - **Bicycle theft:** Includes the taking without consent or theft of a pedal cycle
 - **Shoplifting:** Includes thefts from shops or stalls
 - **Other theft:** Includes theft by an employee, blackmail and making off without payment
 - **Other crime:** Includes forgery, perjury and other miscellaneous crimes

Source: [Police UK](#)

SECTION 7: CRIME AND SAFETY

TABLE 7b

TREND IN DOMESTIC ABUSE RATES, BY AREA, 2010/11 – 2019/20

Year	Wirral		Merseyside	North West	England
	Crimes and Incidences	Rate per 1,000			
2010/11	9,214	*	27.6	22.2	18.4
2011/12	9,416	*	28.8	21.1	18
2012/13	9,591	36.8	29.3	21.4	18.1
2013/14	9,589	36.8	28.4	21.4	19.4
2014/15	9,806	37.5	27.6	20.5	20.4
2015/16	10,308	39.4	26.2	23.5	23.7
2016/17	9,965	38.1	24.6	24.1	24
2017/18	10,189	38.9	23.6	25.1	25.1
2018/19	11,942	45.5	25.8	28.6	27.4
2019/20	12,795	48.7	*	*	*

Notes and Definitions

- Domestic abuse is defined as any incident or pattern of incidents of controlling, coercive or threatening behaviour, violence or abuse between those aged 16 or over who are, or have been, intimate partners or family members. It can include psychological, physical, sexual, financial and/or emotional abuse (Home Office, 2013)
- Figures from 2015/16 include the new methodology which captures data relating to the new categories of all domestic abuse related crimes and domestic abuse related incidents. Figures from 2015/16 onwards are therefore not comparable with data released in previous years.
- An incident is an occurrence reported to the police where circumstances are considered as domestic by the call the call handler. An incident may or may not result in a crime record being created
- A crime is controlling, coercive or threatening behaviour, violence or abuse between those aged 16 or over who are or have been intimate partners or family members regardless of gender or sexuality
- Offences have been recorded as a crime, whereas the number of incidents refers to those that were not recorded as a crime, so the two categories are mutually exclusive of each other
- Rates have been calculated using the preceding calendar years mid-year population estimated sourced from the Office for National Statistics (ONS)
- * notes that data is not available at the time of publishing

Source: Public Health Outcomes Framework, [Public Health England \(PHE\)](#) and Merseyside Police Information Management Systems

SECTION 8: APPENDICES

Table 8a

LIST OF INTERNATIONAL CLASSIFICATION OF DISEASE (ICD) CODES FOR CAUSES OF DEATH INCLUDED IN COMPENDIUM, 2015

Cause	ICD-10 Code
All Cancers	C00-C97
- Colorectal Cancer	C18-C21
- Lung Cancer	C33-C34
- Female Breast cancer	C50
- Cervical Cancer	C53
- Prostate Cancer	C61
All Circulatory Disease	I00-I99
- Cardiovascular Disease	I20-I26, I42.6, I71, I80.1-I80.3, I80.9, I82.9
- Coronary (Ischaemic) Heart Disease	I20-I25
- Cerebrovascular Disease (Stroke)	I60-I69
Diseases of Respiratory System	J00-J99
- Pneumonia	J12-J18
- Bronchitis, Emphysema and COPD	J40-J44
- Asthma	J45-J46
Diseases of Digestive System	K00-K93
- Chronic Liver Disease incl. Cirrhosis	K70, K73-K74
External Causes of Injury	V01-Y89
- Accidents	V01-X59
- Suicide and Undetermined Injury	X60-X84, Y10-Y34

The International Classification of Diseases (ICD) is the standard diagnostic tool used by health professionals to classify diseases and other health problems. ICD-10 came into use in World Health Organisation (WHO) member States from 1994. Please note ICD-11 was presented at the World Health Assembly in May 2019 for adoption by Member States and will come into effect on 1st January 2022.

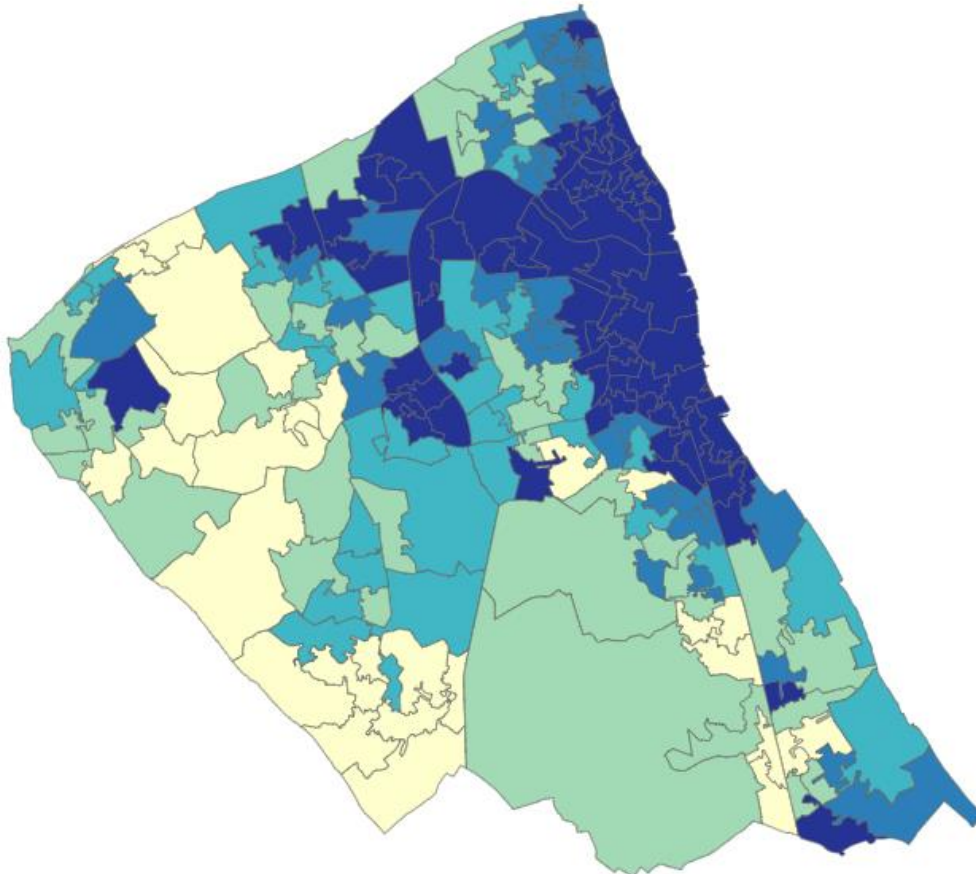
SECTION 8: APPENDICES

Map 8a

INDEX OF MULTIPLE DEPRIVATION (IMD) 2019 SCORES FOR WIRRAL BY LSOA

IMD 2019 by Deprivation Quintile and LSOA

Deprivation Quintile ● 1 (Most Deprived) ● 2 ● 3 ● 4 ● 5 (Least Deprived)

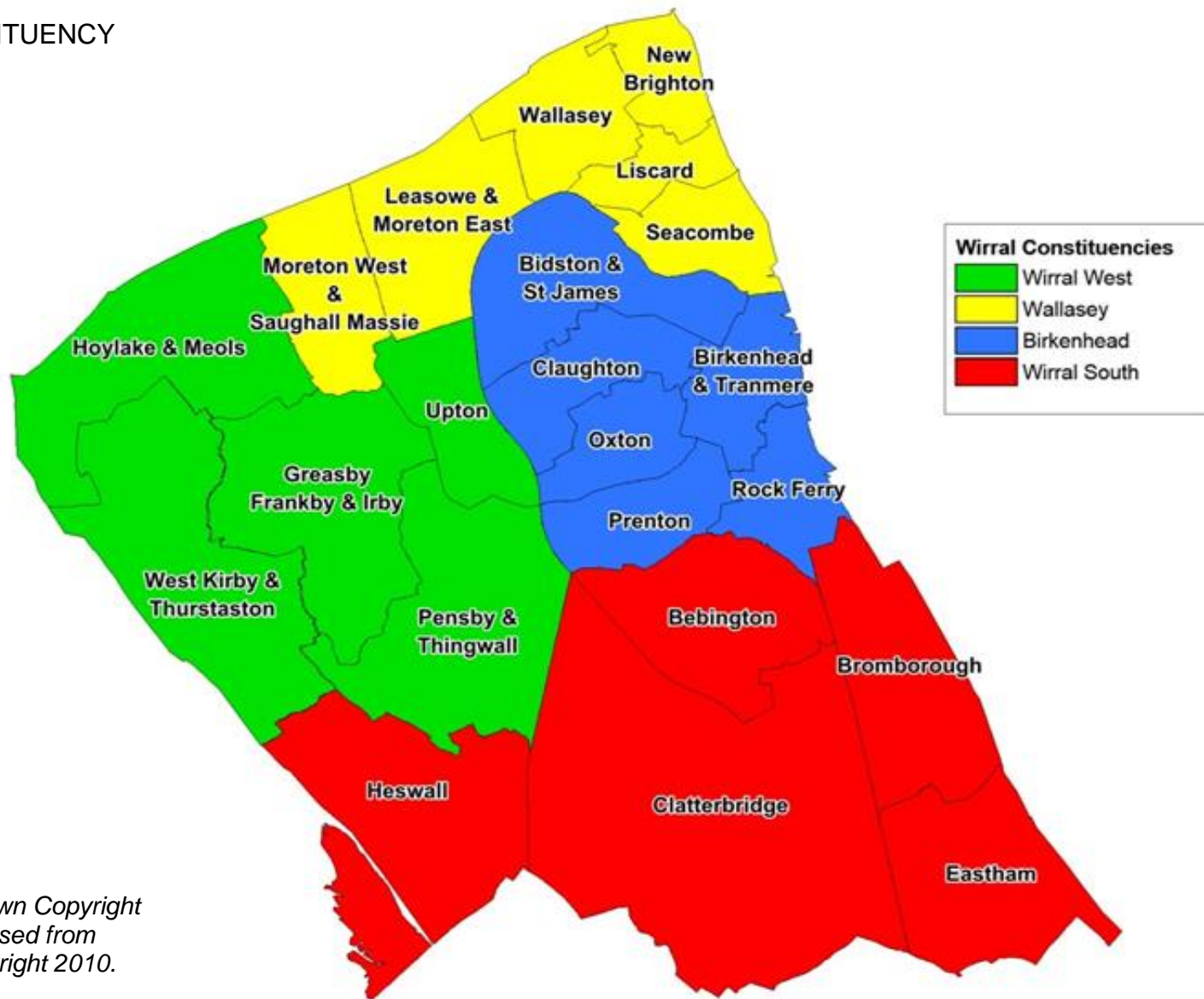
**Notes and Definitions**

1. This map shows the Index of Multiple Deprivation (IMD 2019) score for Lower Layer Super Output Areas (LSOA) across Wirral. The more disadvantaged the area, the higher the score. The darker shading indicates higher deprivation levels, i.e. most disadvantaged area. Lighter shading indicates fewer disadvantaged areas
2. The IMD 2019 aims to measure as accurately as possible the distribution of deprivation across an area. It uses 7 measures of deprivation (Income, Employment, Health Deprivation and Disability, Education, Skills and Training, Barriers to Housing and Services, Crime and Living Environment)

Source: Department of Communities and Local Government ([DCLG](#))

SECTION 8: APPENDICES

WIRRAL WARDS BY CONSTITUENCY



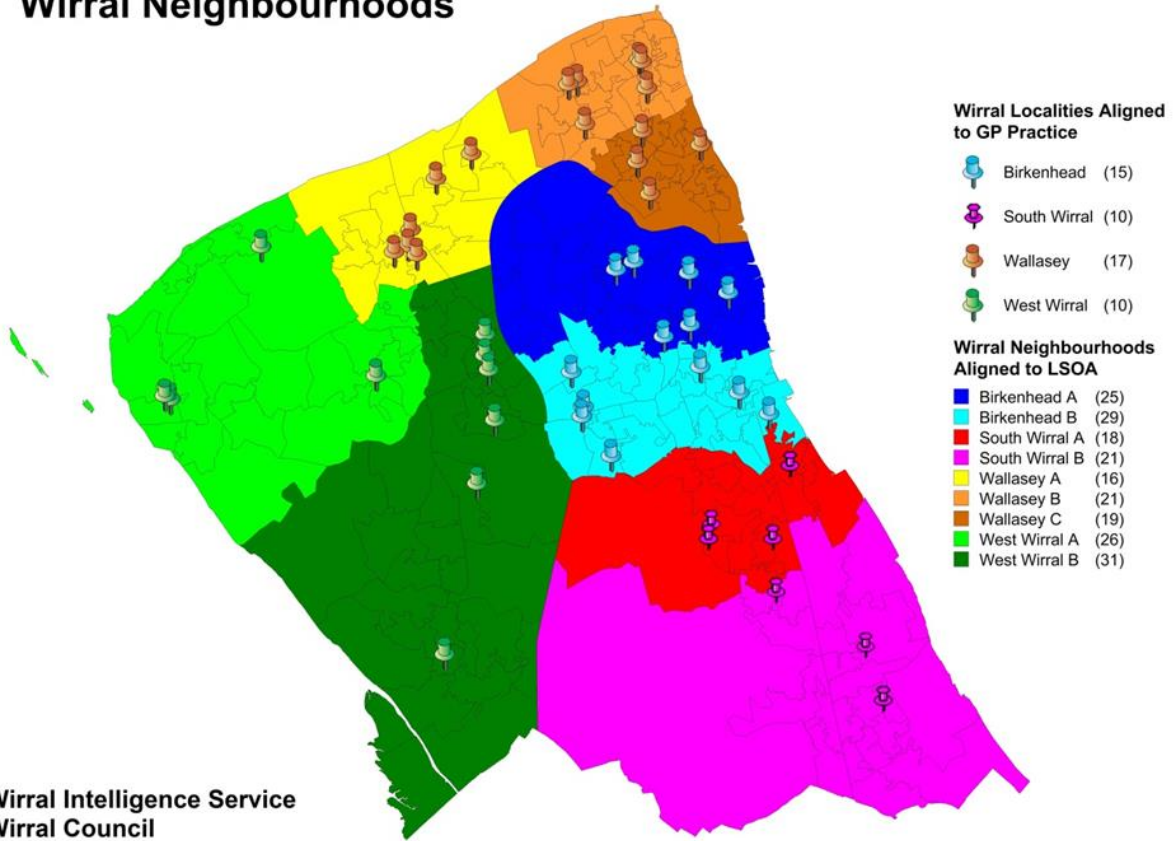
Source: Ordnance Survey © Crown Copyright
Map includes mapping data licensed from
Ordnance Survey © Crown Copyright 2010.
License Number 100019918

SECTION 8: APPENDICES

Map 8c

WIRRAL GP PRACTICES BY LOCALITY AND NEIGHBOURHOOD

Wirral Neighbourhoods



Source: Ordnance Survey © Crown Copyright
Map includes mapping data licensed from
Ordnance Survey © Crown Copyright 2010
License Number 10019918



Compiled by
Wirral Intelligence Service
Wirral Council
Marriss House
Hamilton Street
Birkenhead
CH41 5AL
0151 606 2000

Many thanks to:
British Antarctic Survey
(HMS Sir David Attenborough)
Wirral Council (Constellations,
Holocaust Memorial Day, Moon
Exhibit)

