



Wirral Compendium of Statistics 2021



WIRRAL COMPENDIUM OF STATISTICS 2021

INTRODUCTION

Wirral Council is pleased to present the fourteenth annual edition of our Compendium of Statistics.

The compendium is a reference guide to the most recent information on Wirral and its residents. The compendium is a part of Wirral's Joint Strategic Needs Assessment (JSNA).

The JSNA outlines the health and wellbeing of residents and identifies inequalities and gaps in service provision. It is developed through co-production with service users, commissioners, service providers and resident feedback. It is the evidence base which drives the development of services for residents and supports evidence-based decision making across the Wirral Partnership.

The JSNA is hosted on the Wirral Intelligence Service website alongside other key useful information about Wirral: <https://www.wirralintelligenceservice.org/>

Whether you are an individual, part of a local community group or organisation, it is important that you have a voice in shaping local services. Getting involved in developing the JSNA will enable you to do this.

We would like to thank all those in Wirral Council and Wirral Clinical Commissioning Group (CCG) who contributed information and data for this compendium.

It is strongly recommended that reference be made to the notes and definitions when using this information. Please also take care when comparing the information displayed in this edition with future editions of the Compendium of Statistics.

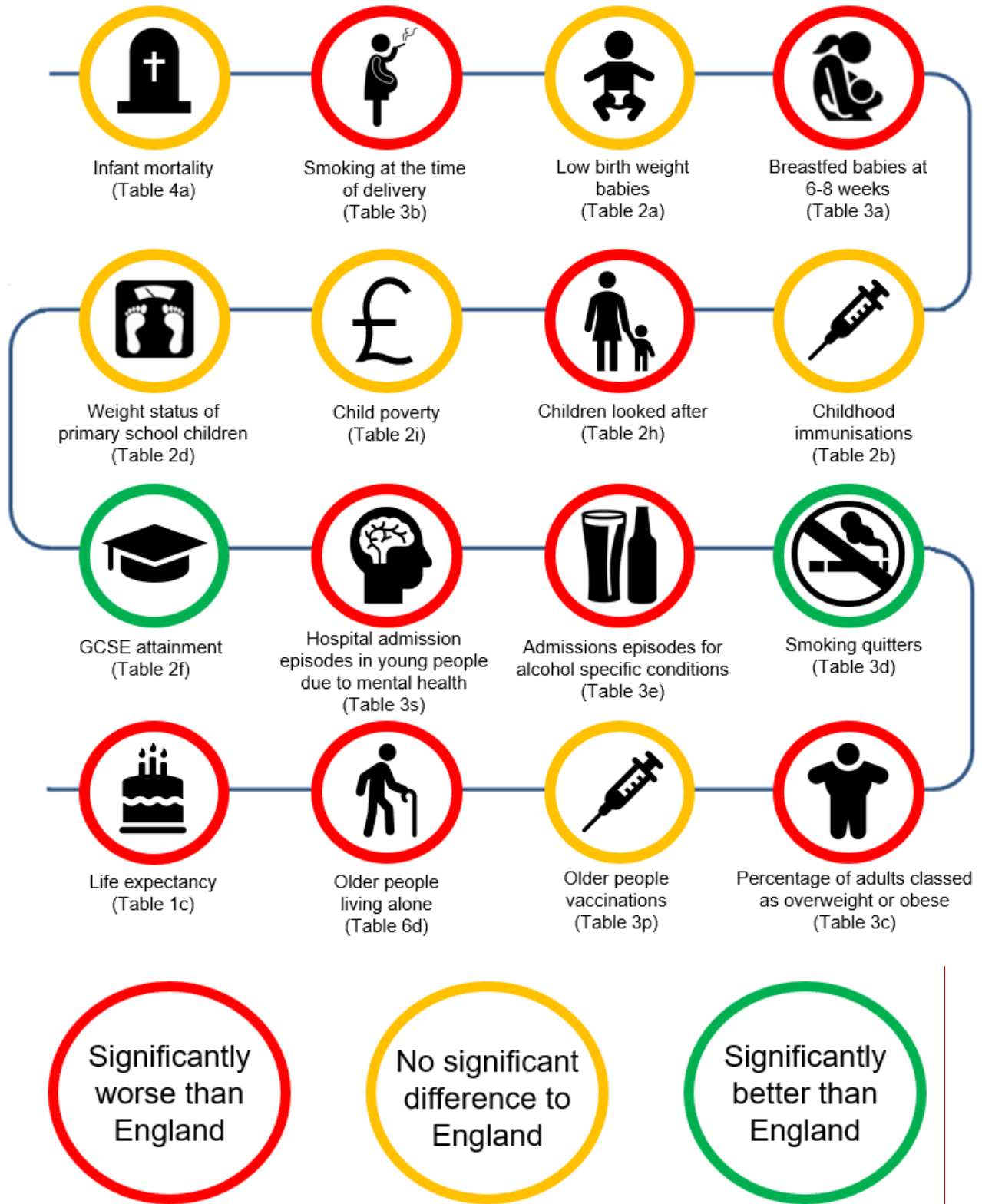
Please also be aware that the current COVID-19 pandemic is likely to have had an effect on several tables in this edition, as well as future editions, of the Compendium. As most data publications are at least 12-18 months behind, the true impacts of COVID may not be fully apparent until 2022 or 2023.

If you would like any further information, please contact:

✉ wirralintelligenceservice@wirral.gov.uk

☎ 0151 606 2000

About Wirral



The data behind all the above icons can be found on the following pages. Navigation to tables has now been made quicker and easier, with the option of clicking either the table number (e.g. Table 1a) or the table title (e.g. Trend in birth and fertility rates) within the Contents Page to go directly to that table.

CONTENTS

1. POPULATION			
Table	Title	Year	Page
Table 1a	Trend in birth and fertility rates	2000 to 2019	7
Table 1b	Trend in maternities, live and stillbirth rates	2004 to 2019	8
Table 1c	Trend in life expectancy at birth	1998-00 to 2017-19	9
Table 1d	Life expectancy at birth by gender	2017-19	10
Table 1e	Estimated resident population by 5-year age group and gender	2019	11
Table 1f	GP registered population by 5-year age group and gender	2021	12
Table 1g	Estimated resident population by age group and ward	2019	13
Table 1h	Trend in estimated resident population by age group (persons)	1997 to 2019	14
Table 1i	Resident population projections by age group (persons)	2021 to 2041	15
Table 1j	Resident population by ethnicity (persons)	2011	16

2. CHILDREN AND YOUNG PEOPLE			
Table 2a	Trend in low-birth-weight babies	2001 to 2018	17
Table 2b	Uptake of childhood immunisations	2018/19 and 2019/20	18
Table 2c	School readiness	2018/19	19
Table 2d	Weight status of primary school children	2019/20	20
Table 2e	Number of children with special education needs (SEN) known to schools	2018 to 2020	21
Table 2f	Educational attainment at key stage 4	2019 and 2020	21
Table 2g	Young people not in education, employment, or training (NEET)	2021	22
Table 2h	Children looked after	2020	23
Table 2i	Child poverty	2015/16 to 2019/20	24
Table 2j	Trend in teenage conceptions	1999-01 to 2016-18	25

3. HEALTH AND WELLBEING			
Table 3a	Trend in breastfeeding rates	2008/09 – 2019/20	26
Table 3b	Trend in maternal smoking at the time of delivery	2010/11 – 2019/20	27
Table 3c	Percentage of adults classified as overweight or obese	2019/20	28
Table 3d	Trend in proportion of smokers quitting after four weeks	2000/01 – 2019/20	29
Table 3e	Indicators of alcohol-related harm	2018-20	30
Table 3f	Alcohol-related A&E attendances	2017/18 – 2019/20	30
Table 3g	Hospital admission rates for alcohol related conditions	2018/19	31
Table 3h	Trend in successful drug and alcohol treatment	2010 to 2019	32
Table 3i	Population wellbeing	2019/20	33
Table 3j	Activity levels per week	2015/16 – 2019/20	34
Table 3k	Legal abortion rates by age of women	2018 and 2019	35
Table 3l	Trend in prevalence of HIV and AIDS	2011 to 2019	36
Table 3m	NHS Health Check uptake	2019/20	37
Table 3n	Trend in coverage of NHS cervical screening programme: women aged 25-49 and 50-64 years	2015/16 – 2019/20	38
Table 3o	Trend in coverage of NHS breast cancer screening programme: women aged 53-70 years	2015/16 – 2019/20	39
Table 3p	Uptake of older people vaccinations	2018/19 and 2019/20	39
Table 3q	Number of people with a learning disability known to GPs	2017/18 – 2019/20	40
Table 3r	Number of carers known to Department of Adult Social Services (DASS)	2021	40
Table 3s	Trend in hospital admissions for mental health conditions in young people	2015/16 - 2019/20	41
Table 3t	Trend in hospital admissions as a result of self-harm	2015/16 - 2019/20	41
Table 3u	Incidence of the most common cancers by gender	2018	42
Table 3v	GP held disease register prevalence rates by Wirral and England	2019/20	43
Table 3w	GP held disease register prevalence rates by Primary Care Network (PCN)	2019/20	44
Table 3x	Emergency admissions in Wirral residents aged over 50 years	2016/17 – 2018/19 and 2017/18 – 2019/20	45

4. MORTALITY			
Table 4a	Infant mortality rates	2017-19	46
Table 4b	Trend in infant mortality	2001-03 to 2017-19	47
Table 4c	Alcohol specific mortality by all ages	2017-19	48
Table 4d	Premature mortality by causes considered preventable	2017-19	49
Table 4e	Standardised mortality ratios (SMRs) by broad cause of death	2017-19	50
Table 4f	Trend in mortality from all causes of death by gender and Wirral, North West and England	2008 to 2019	51
Table 4g	Mortality from all causes of death by ward	2017-19	52
Table 4h	Places of death in Wirral	2019	53

5. ECONOMY AND BUSINESS			
Table 5a	Trend in average personal income by gender	2009 to 2020	54
Table 5b	Average household income	2018	55
Table 5c	Claimant count: number and percentage by gender	2021	56
Table 5d	Employment and support allowance: number of claimants by condition	2020	57
Table 5e	Breakdown of employee jobs by industry	2019	58
Table 5f	Employment by occupation	2020	59
Table 5g	Business start-up and survival rates	2014 to 2019	60
Table 5h	Trend in job density	2000 to 2019	61
Table 5i	Public and private sector employment rates	2017 to 2019	62
Table 5j	Indicators of gross value added (GVA)	2017 to 2019	62

6. TRANSPORT, HOUSING AND THE ENVIRONMENT			
Table 6a	Trend in new dwellings	2011/12 – 2019/20	63
Table 6b	Housing projections	2021 to 2041	63
Table 6c	Households with no access to a vehicle	2011	64
Table 6d	Proportion of people aged 65 and over living alone	2011	65
Table 6e	Deprivation by ward	2019	66
Table 6f	Fuel poverty	2019	67
Table 6g	Trend in median housing affordability ratio	2007 to 2020	68
Table 6h	Road collision casualties	2018-20	69
Table 6i	Carbon dioxide (CO ₂) emission estimates	2005 to 2018	70

7. CRIME AND SAFETY			
Table 7a	Total recorded crime types	2020	71
Table 7b	Trend in domestic abuse rates	2010/11 – 2020/21	72

8. APPENDICES			
Table 8a	List of international classification of disease (ICD) codes for causes of death included in compendium	2015	73
Map 8a	Index of multiple deprivation 2019 scores	2019	74
Map 8b	Wirral ward boundaries with constituencies	2004	75
Map 8c	Wirral GP practices by Primary Care Network (PCN) and neighbourhood	2021	76

SECTION 1: POPULATION

TABLE 1a

TREND IN BIRTH AND FERTILITY RATES, WIRRAL AND ENGLAND, 2000 TO 2019

Year	Number of Live Births	Live Birth Rate	General Fertility Rate	
			Wirral	England
2000	3,438	10.9	53.0	55.9
2001	3,308	10.5	53.8	54.8
2002	3,270	10.4	53.3	54.7
2003	3,503	11.2	57.3	56.7
2004	3,521	11.2	57.9	58.0
2005	3,591	11.5	59.4	58.0
2006	3,575	11.5	59.8	59.7
2007	3,688	11.9	62.3	61.3
2008	3,787	12.2	65.0	62.8
2009	3,645	11.8	64.1	62.6
2010	3,771	12.2	67.3	64.1
2011	3,802	11.9	65.0	64.2
2012	3,816	11.9	66.0	64.9
2013	3,560	11.1	62.3	62.4
2014	3,536	11.0	62.7	62.2
2015	3,563	11.1	63.9	62.5
2016	3,434	10.7	62.6	62.5
2017	3,366	10.4	61.7	61.2
2018	3,242	10.0	60.2	59.7
2019	3,150	9.7	57.9	57.7

Notes and Definitions

1. Live Birth Rate: Number of live births per 1,000 mid-year residents
2. General Fertility Rate: Number of live births per 1,000 women aged 15-44 years

Source: Office for National Statistics ([ONS](#))

SECTION 1: POPULATION

TABLE 1b

MATERNITIES, LIVE AND STILLBIRTH RATES, WIRRAL, 2004 TO 2019

Year	Number of Maternities	Live Births			Stillbirths	
		Number of Live Births	Rate Per 1,000		Number of Stillbirths	Stillbirth Rate
			Crude Rate	GFR		
2004	3,465	3,521	11.2	57.9	18	5.1
2005	3,548	3,591	11.5	59.4	19	5.3
2006	3,537	3,575	11.5	59.8	20	5.6
2007	3,664	3,688	11.9	62.3	23	6.2
2008	3,738	3,787	12.2	65.0	15	3.9
2009	3,628	3,645	11.8	64.1	20	5.5
2010	3,743	3,771	12.2	67.3	33	8.8
2011	3,744	3,802	11.9	65.0	20	5.2
2012	3,789	3,816	11.9	66.0	17	4.4
2013	3,525	3,560	11.1	62.3	18	5.1
2014	3,513	3,536	11.0	62.7	19	5.3
2015	3,531	3,563	11.1	63.9	16	4.5
2016	3,390	3,434	10.7	62.6	16	4.7
2017	3,330	3,366	10.4	61.7	9	2.7
2018	3,252	3,242	10.0	60.2	13	4.0
2019	3,131	3,150	9.7	57.9	17	5.4

Notes and Definitions

1. Maternities: A maternity may result in one or more live or stillborn babies
2. Crude Rate: Number of live births per 1,000 residents
3. General Fertility Rate (GFR): Live births per 1,000 women aged 15-44
4. Stillbirth Rate: Stillbirths are legally defined as foetal deaths occurring after 24 weeks of gestation. The stillbirth rate is the number of stillbirths per 1,000 total live and stillbirths
5. The number of maternities column has been retrospectively updated. For this reason, previous versions of the Wirral Statistical Compendium may have different figures to those shown above

Source: Office for National Statistics ([ONS](#))

SECTION 1: POPULATION

TABLE 1c

TREND IN LIFE EXPECTANCY AT BIRTH, WITH 95% CONFIDENCE LIMITS, WIRRAL, 1998-2000 TO 2017-2019

Time Period	Males			Females		
	Life Expectancy (Years)	95% Confidence Intervals		Life Expectancy (Years)	95% Confidence Intervals	
		Lower Limit	Upper Limit		Lower Limit	Upper Limit
1998-00	73.9	73.5	74.3	79.2	78.8	79.6
1999-01	74.3	73.9	74.7	79.7	79.3	80.0
2000-02	74.9	74.5	75.3	79.9	79.6	80.3
2001-03	75.2	74.8	75.6	80.0	79.6	80.3
2002-04	75.4	75.0	75.8	80.2	79.8	80.5
2003-05	75.5	75.1	76.0	80.3	79.9	80.6
2004-06	75.8	75.4	76.2	80.7	80.4	81.1
2005-07	75.9	75.5	76.3	80.9	80.5	81.2
2006-08	76.1	75.7	76.5	80.9	80.6	81.3
2007-09	76.5	76.1	76.9	80.9	80.5	81.3
2008-10	77.2	76.9	77.6	80.9	80.5	81.2
2009-11	77.5	77.1	77.9	81.5	81.2	81.9
2010-12	77.8	77.4	78.2	81.8	81.4	82.2
2011-13	77.7	77.4	78.1	82.3	81.9	82.6
2012-14	78.0	77.6	78.3	82.1	81.8	82.4
2013-15	77.9	77.6	78.3	81.9	81.6	82.2
2014-16	78.1	77.7	78.5	81.6	81.3	82.0
2015-17	78.3	77.9	78.6	81.8	81.4	82.1
2016-18	78.2	77.8	78.6	82.0	81.7	82.4
2017-19	78.5	78.1	78.9	82.3	81.9	82.6

Notes and Definitions

1. Life expectancy at birth indicates the number of years a baby born in an area can expect to live if they experience current age and gender specific death rates throughout their life. It is not a guide to the remaining expectation of life at a later age (e.g. if life expectancy at birth in a particular area is 80 years, it does not follow that people aged 70 living in that area can expect to live for a further 10 years)
2. Data is presented as 3 calendar year rolling figures. Data was produced by aggregating deaths and population estimates for each three-year period (e.g. 1998-2000 etc.)
3. 95% Confidence Intervals (CIs) indicate the range within which the true value of the indicator has a 95% chance of falling. For example, a 95% CI of 78.1 to 78.9 means that we can be 95% certain the true value lies somewhere between these two values
4. Periodically, the Office for National Statistics (ONS) revises subnational population estimates. Therefore, life expectancy figures for England and local authorities in England are also then revised accordingly. For this reason, previous versions of the Wirral Statistical Compendium may have different figures to those shown above

Source: Office for National Statistics ([ONS](#))

SECTION 1: POPULATION

TABLE 1d

LIFE EXPECTANCY IN YEARS AT BIRTH BY WARDS AND GENDER, 2017-19

Area	Males			Females			Persons		
	Life Expectancy	95% CIs		Life Expectancy	95% CIs		Life Expectancy	95% CIs	
		LCL	UCL		LCL	UCL		LCL	UCL
Bebington	79.5	78.1	80.9	82.7	81.4	84.1	81.2	80.2	82.2
Bidston & St James	72.9	71.1	74.6	78.4	76.9	79.9	75.7	74.6	76.9
Birkenhead & Tranmere	72.8	70.9	74.7	78.2	76.4	80.1	75.4	74.1	76.8
Bromborough	77.7	76.1	79.3	80.7	79.3	82.2	79.3	78.2	80.4
Clatterbridge	81.4	80.0	82.7	83.2	81.6	84.7	82.3	81.3	83.4
Cloughton	77.8	76.4	79.2	78.7	76.8	80.6	78.4	77.3	79.5
Eastham	79.1	77.3	81.0	84.9	83.3	86.4	82.0	80.8	83.2
Greasby, Frankby & Irby	83.5	81.8	85.2	86.7	85.2	88.1	85.1	83.9	86.2
Heswall	82.7	81.1	84.3	84.8	82.8	86.9	83.8	82.5	85.1
Hoylake & Meols	80.7	79.3	82.2	83.3	81.7	84.9	82.1	81.0	83.2
Leasowe & Moreton East	77.5	75.6	79.5	81.4	80.0	82.8	79.5	78.3	80.7
Liscard	77.0	75.3	78.7	81.2	79.8	82.7	79.1	78.0	80.2
Moreton West & Saughall Massie	80.1	78.4	81.9	84.0	82.4	85.6	82.0	80.8	83.2
New Brighton	78.7	77.0	80.3	80.6	78.7	82.5	79.6	78.4	80.9
Oxton	80.0	78.4	81.7	84.8	83.2	86.4	82.4	81.3	83.6
Pensby & Thingwall	81.4	79.7	83.1	86.9	85.7	88.1	84.2	83.1	85.2
Prenton	80.2	78.4	82.0	82.9	81.3	84.5	81.5	80.3	82.8
Rock Ferry	73.0	71.1	74.9	76.5	74.8	78.2	74.8	73.5	76.0
Seacombe	73.4	71.8	75.0	78.7	76.9	80.5	76.0	74.8	77.2
Upton	75.9	74.2	77.5	81.2	79.8	82.6	78.5	77.5	79.6
Wallasey	80.8	78.9	82.8	87.7	86.0	89.4	84.2	82.8	85.5
West Kirby & Thurstaston	82.2	80.2	84.1	86.6	85.2	88.0	84.4	83.2	85.6
Wirral	78.4	78.0	78.7	82.2	81.9	82.5	80.3	80.1	80.6

Notes and Definitions

1. CI, LCL and UCL are acronyms for Confidence Intervals, Lower Confidence Limit and Upper Confidence Limit

Source: Primary Care Mortality Database ([PCMD](#)) and Office for National Statistics ([ONS](#))

SECTION 1: POPULATION

TABLE 1e

ESTIMATED RESIDENT POPULATION BY 5-YEAR AGE GROUP AND GENDER,
WIRRAL, MID-2019

Age Group	Males		Females		Persons	
	Number	%	Number	%	Number	%
0-4	9,148	2.8	8,405	2.6	17,553	5.4
5-9	10,162	3.1	9,635	3.0	19,797	6.1
10-14	9,834	3.0	9,486	2.9	19,320	6.0
15-19	8,883	2.7	8,318	2.6	17,201	5.3
20-24	8,338	2.6	7,580	2.3	15,918	4.9
25-29	9,113	2.8	9,226	2.8	18,339	5.7
30-34	9,183	2.8	9,904	3.1	19,087	5.9
35-39	9,053	2.8	9,778	3.0	18,831	5.8
40-44	8,568	2.6	9,602	3.0	18,170	5.6
45-49	10,150	3.1	10,956	3.4	21,106	6.5
50-54	11,182	3.5	12,227	3.8	23,409	7.2
55-59	11,469	3.5	12,293	3.8	23,762	7.3
60-64	9,915	3.1	10,740	3.3	20,655	6.4
65-69	9,349	2.9	9,957	3.1	19,306	6.0
70-74	8,976	2.8	9,796	3.0	18,772	5.8
75-79	6,055	1.9	7,299	2.3	13,354	4.1
80-84	4,111	1.3	5,622	1.7	9,733	3.0
85-89	2,336	0.7	3,769	1.2	6,105	1.9
90+	1,114	0.3	2,479	0.8	3,593	1.1
All Ages	156,939	48.4	167,072	51.6	324,011	100.0

Notes and Definitions

1. The table shows the estimated resident population at mid-year 2019 for Wirral
2. ONS recommend that population estimates should be rounded to the nearest one hundred persons. The figures presented in the above table are not rounded to the nearest 100 to allow further calculations. Consequently, as these are estimates, they may not be 100% accurate at this level of detail

Source: Office for National Statistics ([ONS](#))

SECTION 1: POPULATION

TABLE 1f

GP REGISTERED POPULATION BY 5-YEAR AGE GROUP AND GENDER,
WIRRAL, 2021

Age Groups	Males		Females		Persons	
	Number	%	Number	%	Number	%
0-4	8,458	2.5	7,807	2.3	16,265	4.8
5-9	10,047	3.0	9,361	2.8	19,408	5.7
10-14	10,199	3.0	9,747	2.9	19,946	5.9
15-19	9,281	2.7	8,825	2.6	18,106	5.4
20-24	8,716	2.6	8,314	2.5	17,030	5.0
25-29	10,051	3.0	9,871	2.9	19,922	5.9
30-34	11,159	3.3	11,014	3.3	22,173	6.6
35-39	10,565	3.1	10,680	3.2	21,245	6.3
40-44	9,924	2.9	9,921	2.9	19,845	5.9
45-49	10,499	3.1	10,684	3.2	21,183	6.3
50-54	12,053	3.6	12,004	3.5	24,057	7.1
55-59	12,379	3.7	12,679	3.7	25,058	7.4
60-64	11,157	3.3	11,195	3.3	22,352	6.6
65-69	9,421	2.8	10,002	3.0	19,423	5.7
70-74	9,352	2.8	9,998	3.0	19,350	5.7
75-79	6,324	1.9	7,281	2.2	13,605	4.0
80-84	4,190	1.2	5,607	1.7	9,797	2.9
85-89	2,351	0.7	3,625	1.1	5,976	1.8
90+	1,086	0.3	2,348	0.7	3,434	1.0
All Ages	167,212	49.4	170,963	50.6	338,175	100.0

Notes and Definitions

1. Figures are based on the patient lists of GP practices in Wirral
2. The data presented is a quarterly snapshot from the GP Payments system maintained by NHS Digital. This release was extracted on 7th May 2021
3. The differences between ONS populations (resident, shown in Table 1e) and GP populations (registered, shown in this table) is a national issue due to several factors, such as patients not informing their GP when they leave an area or people who live somewhere else for most of the year (e.g. students, retirees living abroad)

Source: [NHS Digital](#)

SECTION 1: POPULATION

TABLE 1g

ESTIMATED RESIDENT POPULATION BY AGE GROUP, WARDS AND CONSTITUENCIES, MID-2019

Area	Total Population	Under 15	15-44	45-64	65-84	85+
Bebington	15,707	2,779	5,095	4,439	2,923	471
Bidston & St James	16,163	3,697	6,240	3,922	2,069	235
Birkenhead & Tranmere	16,706	3,603	7,021	4,207	1,653	222
Bromborough	16,215	2,983	5,984	4,304	2,574	370
Clatterbridge	14,184	2,074	4,009	3,881	3,681	539
Cloughton	14,448	2,175	4,761	4,228	2,806	478
Eastham	14,142	2,396	4,449	3,911	2,923	463
Greasby, Frankby & Irby	13,698	1,997	3,686	4,015	3,440	560
Heswall	13,085	1,796	3,135	3,785	3,680	689
Hoylake & Meols	13,327	2,028	3,815	3,923	2,876	685
Leasowe & Moreton East	14,953	3,051	5,261	3,909	2,455	277
Liscard	16,118	2,935	5,874	4,307	2,624	378
Moreton West & Saughall Massie	14,087	2,170	4,538	3,964	3,050	365
New Brighton	15,131	2,287	5,114	4,469	2,776	485
Oxton	13,902	2,095	4,617	3,885	2,941	364
Pensby & Thingwall	13,073	1,983	3,678	3,660	3,231	521
Prenton	14,769	2,627	4,907	4,194	2,637	404
Rock Ferry	14,662	2,989	5,748	3,672	1,967	286
Seacombe	15,449	3,479	6,199	3,725	1,837	209
Upton	16,869	3,209	5,661	4,379	2,988	632
Wallasey	14,688	2,295	4,451	4,439	2,963	540
West Kirby & Thurstaston	12,635	2,022	3,303	3,714	3,071	525
Birkenhead Constituency	90,650	17,186	33,294	24,108	14,073	1,989
Wallasey Constituency	90,426	16,217	31,437	24,813	15,705	2,254
Wirral South Constituency	73,333	12,028	22,672	20,320	15,781	2,532
Wirral West Constituency	69,602	11,239	20,143	19,691	15,606	2,923
Wirral	324,011	56,670	107,546	88,932	61,165	9,698

Notes and Definitions

1. These are estimated figures and are not guaranteed to be 100% accurate at this level of detail

Source: Office for National Statistics ([ONS](#))

SECTION 1: POPULATION

TABLE 1h

TREND IN ESTIMATED RESIDENT POPULATION BY AGE GROUP (PERSONS),
WIRRAL, MID-1997 TO MID-2019

Mid-Year	Population (thousands)						All Ages
	Under 20	20-49	50-64	65-74	75-84	85+	
1997	82.4	125.5	54.9	30.9	19.7	6.9	320.4
1998	82.1	123.1	56.1	30.4	19.7	7.1	318.6
1999	81.9	120.9	57.0	30.4	19.7	7.1	317.0
2000	81.4	120.0	57.9	30.2	19.8	7.1	316.5
2001	81.0	118.4	58.4	30.1	19.9	7.0	314.8
2002	80.4	118.2	59.2	29.9	20.3	7.1	315.1
2003	79.9	118.0	59.8	29.9	20.8	6.9	315.3
2004	79.2	118.0	60.3	29.7	21.0	6.9	315.1
2005	78.3	118.3	60.4	29.5	21.1	7.2	314.8
2006	77.8	118.6	61.0	29.4	20.9	7.6	315.3
2007	77.2	118.6	61.5	29.5	21.1	7.9	315.8
2008	76.9	118.8	62.2	30.0	21.0	8.0	316.9
2009	76.4	119.0	62.8	30.4	21.2	8.1	317.9
2010	75.9	119.1	63.6	31.1	21.3	8.2	319.2
2011	75.2	118.9	64.4	31.6	21.4	8.5	320.0
2012	74.9	118.0	64.1	33.3	21.5	8.6	320.4
2013	74.6	116.9	64.4	34.4	21.6	8.7	320.6
2014	74.8	115.8	65.0	35.4	21.6	9.0	321.6
2015	74.5	114.6	65.6	36.1	21.9	9.1	321.8
2016	74.5	113.6	66.1	36.9	21.8	9.3	322.2
2017	74.3	112.9	66.9	37.3	22.0	9.5	322.9
2018	74.1	111.9	67.4	37.8	22.5	9.5	323.2
2019	73.8	111.4	67.9	38.1	23.1	9.7	324.0

Notes and Definitions

1. The population estimates given are ONS resident population estimates for mid-1997 to mid-2019
2. The estimated resident population of an area includes all people who usually live there, whatever their nationality. Wherever possible, members of Armed Forces in England and Wales are included in the district in which they are stationed. Armed Forces stationed outside of England and Wales are not included. Students are taken to be resident at their term time address
3. These population estimates are presented in thousands and have been rounded to the nearest hundred for presentation purposes. Figures for individual age groups may not add up to the total figure as a result of rounding
4. Estimates from 2001 onwards have been retrospectively updated. Therefore, figures from previous editions of the Compendium are not comparable

Source: [NOMIS](#)

SECTION 1: POPULATION

TABLE 1i

RESIDENT POPULATION PROJECTIONS BY AGE GROUP (PERSONS), WIRRAL,
MID-2021 TO MID-2041

Age Group	Populations (thousand)					% Change 2021-2041
	2021	2026	2031	2036	2041	
0-4	16.9	16.3	16.2	16.4	17.0	0.7%
5-9	19.6	17.6	17.0	16.9	17.2	-12.4%
10-14	19.8	20.1	18.2	17.5	17.5	-11.9%
15-19	17.3	18.8	19.1	17.3	16.8	-3.1%
20-24	15.0	14.2	15.7	16.1	14.9	-1.0%
25-29	17.9	16.9	16.3	18.1	18.6	4.0%
30-34	19.5	18.5	17.5	16.9	18.9	-3.0%
35-39	19.1	20.4	19.5	18.5	17.9	-6.6%
40-44	18.5	19.9	21.2	20.3	19.2	4.1%
45-49	19.7	18.9	20.4	21.7	20.9	5.7%
50-54	23.1	20.1	19.3	20.8	22.1	-4.5%
55-59	24.2	23.3	20.3	19.6	21.2	-12.5%
60-64	22.1	24.1	23.3	20.4	19.8	-10.2%
65-69	19.1	21.4	23.5	22.8	20.0	4.9%
70-74	19.4	18.0	20.3	22.4	21.8	12.4%
75-79	14.2	17.2	16.1	18.3	20.3	43.4%
80-84	9.9	11.4	14.0	13.3	15.2	53.8%
85-89	6.2	6.7	7.8	9.7	9.4	52.1%
90+	3.7	3.9	4.4	5.2	6.5	77.1%
All ages	325.2	327.9	330.0	332.2	335.1	3.1%

Notes and Definitions

1. The latest subnational population projections are based on the 2018 mid-year population estimates and project forward the population from 2020 to 2040. Previous editions of the Compendium which showed projections based on the 2016 mid-year population estimates are therefore not comparable with this table
2. ONS population estimates are presented in thousands and have been rounded to the nearest hundred for presentation purposes. Figures for individual age groups may not add up to the total figure due to rounding
3. The projections are trend-based projections, which mean assumptions for future levels of births, deaths and migration are based on observed levels
4. Percentage change is proportional to the population sizes e.g. the 0-4 age group in 2021 is 16.9 and for 2040 it is estimated to be 17.0. The actual difference of +100 people equates to a 0.7% increase

Source: Office for National Statistics ([ONS](#))

SECTION 1: POPULATION

TABLE 1j

RESIDENT POPULATION BY ETHNICITY, WIRRAL, 2011

Ethnicity	Number	%
White	310,156	97.0
<i>English/Welsh/Scottish/Northern Irish/British</i>	303,682	95.0
<i>Irish</i>	2,667	0.8
<i>Gypsy or Irish Traveller</i>	77	0.0
<i>Other White</i>	3,730	1.2
Mixed/multiple ethnic groups	3,286	1.0
<i>White and Black Caribbean</i>	964	0.3
<i>White and Black African</i>	558	0.2
<i>White and Asian</i>	949	0.3
<i>Other Mixed</i>	815	0.3
Asian/Asian British	5,116	1.6
<i>Indian</i>	1,344	0.4
<i>Pakistani</i>	226	0.1
<i>Bangladeshi</i>	851	0.3
<i>Chinese</i>	1,653	0.5
<i>Other Asian</i>	1,042	0.3
Black/African/Caribbean/Black British	695	0.2
<i>African</i>	389	0.1
<i>Caribbean</i>	189	0.1
<i>Other Black</i>	117	0.0
Other ethnic group	530	0.2
<i>Arab</i>	208	0.1
<i>Any other ethnic group</i>	322	0.1
Total	319,783	100.0

Notes and Definitions

1. This table provides information about the ethnic group of the usual resident population of Wirral as at Census Day (27th March 2011)
2. A usual resident of Wirral is anyone who, on Census Day, was in the Wirral and had stayed or intended to stay in the Wirral for 12 months or more, or had a permanent Wirral address and was outside the Wirral and intended to be outside the Wirral for less than 12 months
3. Please note that a new Census was conducted in 2021. Data from this Census will be made available in line with the release timetables from ONS. For further details see: [Census 2021 milestones - Office for National Statistics \(ons.gov.uk\)](#)

Source: Census 2011, via [NOMIS](#)

SECTION 2: CHILDREN AND YOUNG PEOPLE

TABLE 2a

TRENDS IN LOW BIRTH WEIGHT BABIES, WITH 95% CONFIDENCE LIMITS, WIRRAL AND ENGLAND, 2001 TO 2018

Year	Wirral				England			
	Total Number of Births <2500g	% Of All Births	95% Confidence Intervals		Total Number of Births <2500g	% Of All Births	95% Confidence Intervals	
			Lower Limit	Upper Limit			Lower Limit	Upper Limit
2001	237	7.1	6.3	8.1	45,083	7.9	7.9	8.0
2002	226	6.9	6.1	7.8	45,918	7.9	7.8	7.9
2003	281	8.0	7.1	8.9	47,576	8.0	7.9	8.1
2004	230	6.5	5.8	7.4	48,594	7.9	7.9	8.0
2005	252	7.0	6.2	7.9	51,046	7.9	7.8	8.0
2006	269	7.5	6.7	8.4	52,487	7.9	7.8	7.9
2007	276	7.4	6.6	8.3	51,577	7.5	7.5	7.6
2008	284	7.5	6.7	8.4	52,954	7.5	7.4	7.6
2009	194	5.3	4.5	6.1	50,289	7.1	7.1	7.2
2010	253	6.7	5.9	7.5	50,035	7.3	7.3	7.4
2011	254	6.6	5.9	7.5	50,726	7.4	7.3	7.5
2012	233	6.1	5.4	6.9	50,516	7.3	7.2	7.4
2013	281	7.9	7.0	8.8	48,657	7.4	7.3	7.4
2014	254	7.2	6.3	8.0	48,284	7.4	7.3	7.4
2015	261	7.3	6.5	8.2	48,442	7.4	7.3	7.4
2016	293	8.5	7.6	9.5	48,112	7.3	7.3	7.4
2017	234	6.9	6.1	7.8	46,902	7.4	7.3	7.4
2018	226	6.9	6.1	7.9	45,262	7.4	7.3	7.4

Notes and Definitions

1. Low birth weight babies defined as live and stillborn infants with a stated birth weight of less than 2,500 grams (approximately 5lb 8oz). Numbers exclude births with no weight recorded
2. Confidence intervals (CIs) indicate the range within which the true value of the indicator has a 95% chance of falling. For example, a 95% CI of 6.1 to 7.9, for Wirral in 2018, means that we can be 95% certain the true value lies somewhere between these two values
3. Confidence intervals are much wider with small sample sizes, hence the difference in the upper and lower limits between Wirral and England

Source: *Child and Maternal Health Profiles*, [Public Health England \(PHE\)](#)

SECTION 2: CHILDREN AND YOUNG PEOPLE

TABLE 2b

UPTAKE OF CHILDHOOD IMMUNISATIONS BY AREA, 2018/19 AND 2019/20

Immunisation	2018/19			2019/20		
	Wirral CCG	North West	England	Wirral CCG	North West	England
DTaP/IPV/Hib (Diphtheria, Tetanus, Pertussis, Polio, Haemophilus Influenza B) %	97.3	94.5	94.2	95.6	94.0	93.8
Meningitis C / Hib Booster %	94.7	92.8	90.4	93.5	92.0	90.5
Pneumococcal (PCV) Booster %	95.0	92.1	90.2	94.9	93.5	93.2
MMR (1 dose – 2 years old) %	94.5	92.4	90.3	93.6	91.9	90.6
MMR (1 dose – 5 years old) %	97.9	95.3	94.5	97.6	95.1	94.5
MMR (2 doses – 5 years old) %	92.8	88.9	86.4	94.2	88.1	86.8
HPV (1 dose) %	90.5	88.6	88.0	53.9	68.4	59.2
HPV (2 doses) %	82.8	85.8	83.9	1.1	73.5	64.7

Notes and Definitions

- All of the above immunisations, with the exception of HPV (Human Papillomavirus), relate to children immunised by the age of two unless stated otherwise in the table. The HPV vaccination is offered to girls aged 12-13 years old
- Children are routinely scheduled for their primary immunisations against each of the following diseases: Diphtheria, Tetanus, Pertussis (Whooping Cough), Polio, Haemophilus Influenza B (Hib). These are given in a series of immunisations from the age of 2 months. A single dose of MMR (Measles, Mumps and Rubella) is offered from 13 months of age with a second one available any time until a child's 5th birthday
- The PCV vaccine protects against pneumococcal infections that can cause pneumonia, septicaemia or meningitis. A child can receive this vaccine any time before their 1st birthday
- Immunisation rates are a combined figure for Diphtheria, Tetanus, Polio, Pertussis, and Hib. Figures for individual vaccinations are not available
- Information relates to all those registered with a GP whose practice forms part of the CCG (Clinical Commissioning Group) regardless of where that person is resident, plus any people not registered with a GP but who are resident within the geographic boundary of the CCG
- Please see the [Routine Immunisation Schedule](#) for the UK for a full breakdown of childhood immunisations
- Wirral was not able to commence with the annual HPV vaccination programme due to the COVID-19 pandemic. This is the reason for the unusually low coverage rate for 2019/20

Source: Public Health Outcomes Framework, [Public Health England \(PHE\)](#)

SECTION 2: CHILDREN AND YOUNG PEOPLE

TABLE 2c

SCHOOL READINESS, ALL CHILDREN AND CHILDREN IN RECEIPT OF FREE SCHOOL MEALS (FSM), BY AREA, 2018/19

Indicator	Wirral			North West			England		
	%	95% Confidence Intervals		%	95% Confidence Intervals		%	95% Confidence Intervals	
		Lower Limit	Upper Limit		Lower Limit	Upper Limit		Lower Limit	Upper Limit
All Children (age 5) achieving a good level of development at the end of Reception	69.3	67.8	70.8	68.9	68.6	69.2	71.8	71.7	71.9
Children (age 5) with FSM achieving a good level of development at the end of Reception	50.0	46.2	53.8	54.4	53.6	55.3	56.5	56.2	56.9
All Year 1 pupils (age 6) achieving the expected level in the phonics screening check	81.9	80.6	83.1	80.9	80.6	81.1	81.8	81.7	81.9
Year 1 pupils (age 6) with FSM achieving the expected level in the phonics screening check	73.0	69.9	75.8	69.8	69.1	70.5	70.1	69.8	70.3

Notes and Definitions

1. Children are defined as having reached a good level of development if they achieve at least the expected level in the early learning goals in the prime areas of learning (personal, social and emotional development; physical development; and communication and language) and the early learning goals in the specific areas of mathematics and literacy
2. Year 1 pupils achieving the expected level in the phonics screening check were deemed to have met the required standard if they scored 32 or more out of a possible 40
3. Percentages were calculated using all eligible children in their local authority or all eligible children in receipt of Free School Meals in their local authority as the denominator
4. Confidence Intervals (CIs) indicate the range within which the true value of the indicator has a 95% chance of falling. For example, a 95% CI of 67.8 to 70.8, for all children achieving a good level of development at the end of Reception in Wirral for 2018/19, means that we can be 95% certain the true value lies somewhere between these two values

Source: *Child and Maternal Health Profiles*, [Public Health England \(PHE\)](#)

SECTION 2: CHILDREN AND YOUNG PEOPLE

TABLE 2d

WEIGHT STATUS OF PRIMARY SCHOOL CHILDREN (AGED 4/5 AND 10/11) BY AREA, 2019/20

Area	Reception Year (aged 4/5)					Year 6 (aged 10/11)				
	% with height and weight recorded	% under-weight	% healthy weight	% over-weight	% obese	% with height and weight recorded	% under-weight	% healthy weight	% over-weight	% obese
Wirral	*	0.7	74.9	14.8	9.5	*	1.0	64.1	14.2	20.7
North West	*	0.8	74.0	14.4	10.8	*	1.3	61.2	14.6	22.8
England	*	0.9	76.1	13.1	9.9	*	1.4	63.4	14.1	21.0

Notes and Definitions

1. Figures based on the percentage of primary school age children in their Reception Year (aged 4/5 years) and Year 6 (aged 10/11 years) in the school year 2019/20
2. [NICE guidelines](#) define children as overweight if their Body Mass Index (BMI) is more than, or equal to the 85th percentile but less than the 95th percentile. Children with a BMI over the 95th percentile are defined as obese (this means that they are heavier than 95% of other children of the same height, age and gender)
3. Percentages may not sum due to rounding
4. Participation rates have not been released for 2019/20 as it is not possible to produce comparable data to earlier years due to the school closures in March 2020 and inability to differentiate between missed measurements due to Covid-19 and other reasons

Source: National Child Measurement Programme (NCMP) and Child Obesity Profile, [Public Health England \(PHE\)](#)

SECTION 2: CHILDREN AND YOUNG PEOPLE

TABLE 2e

NUMBER OF CHILDREN WITH SPECIAL EDUCATIONAL NEEDS KNOWN TO SCHOOLS, BY AREA, 2018 TO 2020

Year	Wirral (Number)	Wirral (%)	North West (%)	England (%)
2018	8,643	16.8	14.8	14.6
2019	9,207	17.8	15.2	14.9
2020	9,299	17.9	15.8	15.5

Notes and Definitions

1. The values shown are the number of SEN pupils as a percentage of all pupils in all schools
2. This data includes all academies including free schools, state-funded and non-maintained special schools, middle schools as deemed, all-through schools, city technology colleges, university technology colleges, studio schools, direct grant nursery schools, pupil referral units and general hospital schools.
3. Figures are recorded in January of each year

Source: [Department for Education \(DfE\)](#)

SECTION 2: CHILDREN AND YOUNG PEOPLE

TABLE 2f

EDUCATIONAL ATTAINMENT AT KEY STAGE 4 (GCSE), ALL CHILDREN AND CHILDREN IN RECEIPT OF FREE SCHOOL MEALS (FSM), BY AREA, 2019 AND 2020

Key Stage 4 / GCSE	2019			2020		
	Wirral	North West	England	Wirral	North West	England
Average Attainment 8 score - all pupils	48.4	45.5	44.7	51.5	49.0	48.0
Average Attainment 8 score - eligible for FSM	33.8	33.6	35.0	37.7	37.0	38.6
Average Attainment 8 score - not eligible for FSM	51.6	47.9	48.8	54.8	51.6	52.3

Notes and Definitions

1. In the new grading system introduced in 2016, Attainment 8 is used to judge school performance. This is a record of a student's average achievement over 8 subjects. For more information, please visit the following website:
<https://www.gov.uk/government/publications/progress-8-school-performance-measure>
2. A higher Attainment 8 score indicates higher attainment

Source: Local Authority Interactive Tool ([LAIT](#)), Department for Education ([DfE](#))

SECTION 2: CHILDREN AND YOUNG PEOPLE

TABLE 2g

YOUNG PEOPLE (BY COHORT) NOT IN EDUCATION, EMPLOYMENT OR TRAINING (NEET), OR NOT KNOWN, BY AREA, 2021

Area	Cohort		All Cohorts	
	2019	2020	Number	%
Bebington	3.1%	1.0%	*	1.9%
Bidston & St James	15.1%	12.6%	55	13.9%
Birkenhead & Tranmere	10.8%	4.2%	31	7.4%
Bromborough	7.5%	1.2%	15	4.3%
Clatterbridge	3.0%	0.7%	*	1.8%
Cloughton	5.2%	3.2%	16	4.2%
Eastham	2.5%	2.1%	*	2.3%
Greasby, Frankby & Irby	1.6%	1.2%	*	1.4%
Heswall	0.0%	0.0%	*	0.0%
Hoylake & Meols	1.6%	1.4%	*	1.5%
Leasowe & Moreton East	10.2%	3.6%	27	6.9%
Liscard	14.0%	2.8%	34	8.8%
Moreton West & Saughall Massie	4.4%	2.0%	*	3.1%
New Brighton	5.9%	2.5%	13	4.2%
Oxton	3.3%	0.7%	*	2.0%
Pensby & Thingwall	3.4%	3.4%	*	3.4%
Prenton	4.2%	2.6%	11	3.4%
Rock Ferry	11.2%	10.2%	41	10.7%
Seacombe	9.7%	4.0%	26	6.7%
Upton	8.6%	1.9%	20	5.0%
Wallasey	2.1%	0.0%	*	1.0%
West Kirby & Thurstaston	3.1%	0.7%	*	1.9%
Birkenhead Constituency	8.8%	6.0%	159	7.4%
Wallasey Constituency	8.3%	2.6%	112	5.4%
Wirral South Constituency	3.4%	1.0%	34	2.2%
Wirral West Constituency	4.1%	1.6%	42	2.8%
Wirral	7.6%	3.1%	389	5.3%

Notes and Definitions

1. This data is accurate as of 24th May 2021
2. Both cohorts are based on a person's birthdate and then sectioned by the school year that they attended e.g. those in the 2019 cohort were born between the 01-09-2002 and 31-08-2003 school year whereas those in the 2020 were born between 01-09-2003 and 31-08-2004
3. The overall Wirral figure includes those with no known address so figures may not sum
4. Figures less than 10 have been suppressed for reasons of confidentiality (*)
5. The Children's & Young People's Department now only report on the last 2 years' worth of data rather than the last three years and so, due to these changes, this table cannot be compared with versions of the Compendium before 2019

Source: Children & Young People's Department, Wirral Council

SECTION 2: CHILDREN AND YOUNG PEOPLE

TABLE 2h

CHILDREN LOOKED AFTER, BY AREA, 2020

Area	Number	Rate per 10,000
Bebington	17	51.0
Bidston & St James	142	332.0
Birkenhead & Tranmere	126	301.4
Bromborough	39	112.6
Clatterbridge	*	12.0
Cloughton	24	89.0
Eastham	18	63.4
Greasby, Frankby & Irby	*	25.0
Heswall	*	4.5
Hoylake & Meols	*	24.1
Leasowe & Moreton East	43	119.9
Liscard	45	127.6
Moreton West & Saughall Massie	15	58.1
New Brighton	17	60.8
Oxton	*	32.1
Pensby & Thingwall	*	25.4
Prenton	20	63.8
Rock Ferry	87	243.6
Seacombe	104	257.8
Upton	32	84.3
Wallasey	10	36.5
West Kirby & Thurstaston	11	45.0
Birkenhead Constituency	407	200.0
Wallasey Constituency	234	121.5
Wirral South Constituency	78	54.2
Wirral West Constituency	61	45.2
Wirral	**812	120.3
England	80,080	67.0

**This figure includes children originally from outside Wirral, who were placed in Wirral

Notes and Definitions

1. Children assigned to the Ward where their family was last resident prior to becoming looked after
2. Numbers for Wirral Wards with less than 10 cases have been suppressed for reasons of confidentiality (*)
3. Children Looked After is defined as children between the ages of 0 and 17 years who are in the care of the Local Authority
4. Rates calculated using Wirral ONS 2019 mid-year populations for children aged 0 to 17 years (per 10,000 population)

Source: Wirral Council Children & Young People's Team/DCSF Annual Statistical Return (SSDA903)

SECTION 2: CHILDREN AND YOUNG PEOPLE

TABLE 2i

CHILDREN AGED UNDER 16 IN LOW-INCOME FAMILIES (CHILD POVERTY, RELATIVE MEASURE) BY AREA, 2015/16 TO 2019/20

Area	2015/16	2016/17	2017/18	2018/19	2019/20
Bebington	8.6%	9.1%	8.5%	10.8%	11.0%
Bidston & St James	22.4%	24.3%	26.2%	29.8%	28.9%
Birkenhead & Tranmere	27.0%	28.0%	29.6%	32.6%	33.3%
Bromborough	12.5%	13.9%	15.2%	16.3%	17.2%
Clatterbridge	7.6%	7.3%	7.0%	7.5%	7.1%
Cloughton	13.6%	15.6%	15.8%	18.2%	18.0%
Eastham	9.6%	11.6%	10.8%	11.6%	12.1%
Greasby, Frankby & Irby	7.8%	6.8%	8.6%	9.0%	9.3%
Heswall	5.4%	5.6%	5.5%	5.6%	4.7%
Hoylake & Meols	5.5%	5.4%	7.3%	7.5%	8.8%
Leasowe & Moreton East	17.5%	17.8%	19.6%	18.9%	20.5%
Liscard	15.7%	19.1%	21.8%	21.4%	19.4%
Moreton West & Saughall Massie	12.1%	11.8%	14.8%	13.4%	14.5%
New Brighton	13.9%	14.4%	16.4%	18.4%	16.7%
Oxton	9.6%	10.8%	10.1%	12.3%	12.9%
Pensby & Thingwall	8.7%	10.0%	10.5%	11.2%	11.4%
Prenton	13.2%	12.6%	14.0%	14.2%	14.4%
Rock Ferry	21.6%	22.3%	26.9%	26.7%	25.3%
Seacombe	22.4%	25.8%	26.8%	27.5%	30.1%
Upton	14.3%	16.3%	17.0%	18.1%	17.1%
Wallasey	9.9%	11.2%	10.7%	9.5%	10.3%
West Kirby & Thurstaston	8.1%	8.9%	8.1%	7.6%	8.1%
Wirral	14.1%	15.2%	16.4%	17.2%	17.4%
North West	18.2%	18.8%	20.6%	22.2%	22.6%
England	15.2%	16.0%	16.8%	17.8%	18.1%

Notes and Definitions

1. Due to changes in methodology, this indicator is not comparable with those published in previous versions of the compendium
2. Relative low-income is defined as a family as having low income Before Housing Costs (BHC) in the reference year. A family must have claimed one or more of Universal Credit, Tax Credits or Housing Benefit at any point in the year to be classed as low-income in these statistics

Source: Her Majesty's Revenue and Customs ([HMRC](#))

SECTION 2: CHILDREN AND YOUNG PEOPLE

TABLE 2j

TREND IN TEENAGE CONCEPTIONS, BY AREA, 1999-2001 TO 2016-2018

Time Period	Wirral Under 18 Conceptions		North West (Conception Rate per 1,000)	England (Conception Rate per 1,000)
	Number of Conceptions	Conception Rate Per 1,000		
1999-01	916	46.9	47.1	42.5
2000-02	935	47.3	46.0	43.0
2001-03	906	45.5	45.2	42.5
2002-04	880	44.1	45.5	42.2
2003-05	879	44.0	46.0	41.7
2004-06	911	45.4	45.7	41.2
2005-07	918	46.9	45.9	41.1
2006-08	865	45.1	45.2	40.6
2007-09	817	43.9	44.7	39.4
2008-10	789	42.2	42.3	37.0
2009-11	746	40.9	39.2	34.0
2010-12	677	37.9	35.5	30.9
2011-13	594	33.9	31.5	27.6
2012-14	564	32.7	28.7	25.0
2013-15	514	30.3	29.8	25.5
2014-16	465	27.6	24.6	20.8
2015-17	400	24.1	23.0	19.1
2016-18	363	22.4	22.0	17.8

Notes and Definitions

1. The under 18 conception rate is a rate per 1,000 females aged 15-17 years of age
2. The numerator includes any conceptions in under 18s (including any of those aged under 15) while the denominator is 15-17 year olds only
3. Data presented is for 3 pooled years to smooth out the random year-on-year variations which can characterise small datasets such as under 18 conceptions

Source: Office for National Statistic ([ONS](#))

SECTION 3: HEALTH AND WELLBEING

TABLE 3a

TREND IN BREASTFEEDING INITIATION AND 6-8 WEEK RATES, BY AREA,
2008/09 - 2019/20

Year	Wirral		North West		England	
	Initiation (%)	6-8 weeks (%)	Initiation (%)	6-8 weeks (%)	Initiation (%)	6-8 weeks (%)
2008/09	53.3	28.0	61.8	*	71.7	*
2009/10	56.9	30.4	63.0	32.5	72.7	44.7
2010/11	55.5	29.9	63.4	34.0	73.7	46.1
2011/12	55.6	30.2	62.0	34.1	74.0	47.2
2012/13	56.7	31.0	62.3	33.0	73.9	47.2
2013/14	*	31.0	64.5	*	74.0	45.8
2014/15	55.6	31.0	64.6	*	74.3	43.8
2015/16	58.9	32.8	64.2	*	74.0	43.2
2016/17	59.4	33.9	64.5	*	74.5	44.4
2017/18	56.2	33.2	*	*	*	43.1
2018/19	58.7	35.9	62.4	38.9	67.4	46.2
2019/20	-	36.1	-	*	-	48.0

Notes and Definitions

1. Breastfeeding initiation is defined as a mother giving any breast milk (including expressed milk) in the first 48 hours after birth. Please note that since 2017//18, breastfeeding initiation figures have been recalculated as the percentage of babies whose first feed is breastmilk. Therefore, figures from 2017/18 onwards cannot be compared with previous years
2. A very small number of women may be prevented from breastfeeding or giving first feed breastmilk as a result of their own medical history or condition following birth, and a very small number of infants may be too sick to receive mother's own milk or donor milk in the first 48 hours. It should therefore be noted that this indicator would not be expected to reach 100%
3. Breastfeeding at 6-8 weeks is defined as the percentage of infants that are totally or partially breastfed at age 6-8 weeks. Due to changes in the methodology, figures for breastfeeding at 6-8 weeks from 2015/16 onwards cannot be compared with previous years
4. Some figures are missing (*) for Wirral, North West, and England. This is due to incomplete data. Other missing figures (-) for Wirral, North West and England, were not available at the time of publication

Source: Child and Maternal Health Profiles, [Public Health England \(PHE\)](#)

SECTION 3: HEALTH AND WELLBEING

TABLE 3b

TREND IN MATERNAL SMOKING AT THE TIME OF DELIVERY, BY AREA, 2010/11 - 2019/20

Year	Wirral		North West		England	
	Percentage (%)	Count	Percentage (%)	Count	Percentage (%)	Count
2010/11	14.6	523	17.8	15,138	13.6	89,042
2011/12	13.2	479	17.1	14,650	13.3	87,707
2012/13	12.0	418	16.5	14,026	12.8	83,506
2013/14	*15.7	420	15.5	12,808	12.2	75,913
2014/15	*13.9	364	14.8	12,107	11.7	70,879
2015/16	*12.4	354	13.8	11,252	11.0	67,195
2016/17	*12.0	348	13.4	10,949	10.7	65,023
2017/18	*13.5	379	13.4	10,737	10.8	64,391
2018/19	13.9	422	12.7	9,951	10.6	61,399
2019/20	12.5	372	12.2	9,381	10.4	58,834

Notes and Definitions

1. Asterisk in table (*) indicates that there is a data quality issue with this value
2. Figures show the number of women who smoked at time of delivery as well as the rate per 100 maternities (%)
3. Due to changes in methodology, these figures cannot be compared to those published in previous versions of the Compendium

Source: *Public Health Outcomes Framework*, [Public Health England \(PHE\)](#)

SECTION 3: HEALTH AND WELLBEING

TABLE 3c

PERCENTAGE OF ADULTS (18+) CLASSIFIED AS OVERWEIGHT OR OBESE, BY AREA, 2015/16 – 2019/20

Years	Wirral			North West	England
	Percentage (%)	95% Confidence Intervals		Percentage (%)	Percentage (%)
		Lower Limit	Upper Limit		
2015/16	59.6%	54.7%	65.0%	63.0%	61.3%
2016/17	63.3%	58.1%	68.5%	63.3%	61.3%
2017/18	62.5%	57.8%	67.1%	64.3%	62.0%
2018/19	66.0%	61.4%	70.4%	64.9%	62.3%
2019/20	69.3%	65.1%	73.6%	65.9%	62.8%

Notes and Definitions

1. Adults (18+) are defined as overweight (including obese) if their body mass index (BMI) is greater than or equal to 25kg/m²
2. It is known that adults tend to underestimate their weight and overestimate their height when providing self-reported measurements and the extent to which this occurs can differ between population groups. Therefore, prevalence of excess weight (overweight including obese) calculated from self-reported data is likely to produce lower estimates than prevalence calculated from measured data
3. 95% Confidence Intervals (CIs) indicate the range within which the true value of the indicator has a 95% chance of falling. For example, a 95% CI of 65.1 to 73.6 means that we can be 95% certain the true value lies somewhere between these two values
4. For more information on the topic of obesity then please visit the Wirral Intelligence Service website for information on [Childhood Obesity](#) and [Adult Obesity](#)

Source: [Public Health England \(based on Active Lives Survey, Sport England\)](#)

3: HEALTH AND WELLBEING

TABLE 3d

TREND IN PROPORTION OF SMOKERS SUCCESSFULLY QUITTING AFTER FOUR WEEKS, WIRRAL, 2000/01 - 2019/20

Year	Numbers of Quit Dates Set	Numbers of Clients Still Quit After 4 Weeks	Quit Rate %
2000/01	791	507	64.1
2001/02	909	497	54.7
2002/03	3,688	1,709	46.3
2003/04	4,507	1,991	44.2
2004/05	5,506	2,533	46.0
2005/06	5,637	2,383	42.3
2006/07	5,675	2,203	38.8
2007/08	6,087	2,188	35.9
2008/09	5,271	2,359	44.8
2009/10	6,624	2,812	42.5
2010/11	8,738	3,101	35.5
2011/12	8,121	3,377	41.6
2012/13	5,268	2,183	41.4
2013/14	3,982	1,727	43.4
2014/15	3,470	1,371	39.5
2015/16	2,777	1,382	49.8
2016/17	2,253	1,195	53.0
2017/18	3,063	1,502	49.0
2018/19	3,009	1,523	50.6
2019/20	3,034	1,534	50.6

Notes and Definitions

1. A client is counted as having successfully quit smoking at the 4 week follow up if he/she has not smoked at all during the 4 weeks following the quit date. This is based on self-reported smoking status by clients; a proportion of quits are also confirmed with Carbon Monoxide readings
2. Figures are calculated as a proportion of clients who have set a quit date whilst in treatment services
3. Figures presented here are quit attempts, not clients. Clients may attempt to stop smoking several times during any given year and so may be counted more than once

Source: [NHS Digital](#)

SECTION 3: HEALTH AND WELLBEING

TABLE 3e

INDICATORS OF ALCOHOL-RELATED HARM, BY AREA, 2018-20

Time range	Indicator	Number	Rate per 100,000		
		Wirral	Wirral	North West	England
*2018	Years of life lost (males)	1,547	1,124	1,140	926
	Years of life lost (females)	766	516	471	353
*2018	Alcohol related mortality (males)	132	85.7	78.7	67.2
	Alcohol related mortality (females)	69	37.2	34.4	28.7
2019/20	Admission episodes for alcohol specific conditions (males)	2,727	1,784	1,211	869
	Admission episodes for alcohol specific conditions (females)	1,365	830	573	397

Notes and Definitions

1. Due to changes in the Local Alcohol Profiles for England, indicators included in previous versions of this compendium may have been removed and/or changed
2. Rates for all indicators are a directly age standardised rate per 100,000 population
3. Mortality figures are recorded by calendar years whereas hospital admission figures are recorded by financial year. This therefore explains why some years are shown as 2018 and others as 2019/20
4. Updated figures for mortality related indicators (*) were not available at the time of publication

Source: Local Alcohol Profiles for England, [Public Health England \(PHE\)](#)

SECTION 3: HEALTH AND WELLBEING

TABLE 3f

ALCOHOL-RELATED A&E ATTENDANCES, WIRRAL, 2017/18 - 2019/20
(3 YEARS POOLED)

Wirral	Alcohol-related assault	Alcohol-related deliberate self-harm	All alcohol-related injury
Number	1,009	484	4,538
Rate per 1,000	3.9	1.9	17.7

Notes and Definitions

1. This data relates to alcohol-related Accident and Emergency (A&E) attendances where an injury was sustained between April 2017 and March 2020
2. The rate has been calculated using ONS mid-2019 population estimates as a rate per 1,000 people aged 18+
3. Due to changes in methodology, this indicator cannot be compared with previous versions of the compendium

Source: Trauma & Injury Intelligence Group ([TIIG](#)), Liverpool John Moores University

SECTION 3: HEALTH AND WELLBEING

TABLE 3g

HOSPITAL ADMISSION RATES FOR ALCOHOL-RELATED CONDITIONS, WIRRAL, 2018/19

Area	Admitted to hospital with alcohol-related conditions (Narrow): Males, all ages (2018/19)				Admitted to hospital with alcohol-related conditions (Narrow): Females, all ages (2018/19)				Admitted to hospital with alcohol-related conditions (Narrow): All persons, all ages (2018/19)			
	Count	DSR per 100,000 population	Lower 95% CI	Upper 95% CI	Count	DSR per 100,000 population	Lower 95% CI	Upper 95% CI	Count	DSR per 100,000 population	Lower 95% CI	Upper 95% CI
Wirral	1,863	1,223.5	1,168.1	1,280.8	995	603.1	565.8	642.2	2,858	895.1	862.3	928.8
North West	33,494	983.4	972.8	994.1	18,844	519.9	512.5	527.4	52,338	741.5	735.2	747.9
England	220,682	850.7	847.1	854.3	136,977	494.4	491.8	497.0	357,659	663.7	661.5	665.9

Notes and Definitions

1. The 'Narrow Measure' for alcohol related hospital admissions was introduced in 2012/13 and includes only those admissions where the primary diagnosis code has an alcohol attributable fraction (which means the admission is wholly or partially alcohol-related), or where either primary code or secondary code has an alcohol-attributable fraction
2. The results are presented as directly age-standardised rates (DSR) per 100,000 European standard population (2013). Age-standardised rates are used to allow comparison between populations which may contain different proportions of people of different ages
3. 95% Confidence Intervals indicate the range within which the true value of the rate lies, e.g. a 95% CI for Wirral of 862.3 to 928.8 (all persons) means that we can be 95% certain that the true rate lies somewhere between these two values
4. Various changes have been made to the methodology of this indicator within the Local Alcohol Profiles for England (LAPE), including geography updates and attributable fractions. For more information, please visit: <https://fingertips.phe.org.uk/profile/local-alcohol-profiles>

Source: Local Alcohol Profiles for England (LAPE), [Public Health England \(PHE\)](#)

SECTION 3: HEALTH AND WELLBEING

TABLE 3h

TREND IN SUCCESSFUL COMPLETIONS OF DRUG AND ALCOHOL TREATMENT, BY AREA, 2010 TO 2019

Year	Wirral			North West			England		
	Opiates	Non-opiates	Alcohol	Opiates	Non-opiates	Alcohol	Opiates	Non-opiates	Alcohol
2010	7.8%	43.6%	38.2%	6.2%	38.8%	29.8%	6.7%	34.4%	31.4%
2011	9.7%	42.2%	48.1%	7.7%	39.0%	33.0%	8.6%	36.8%	34.8%
2012	9.1%	48.4%	43.7%	7.7%	43.8%	38.7%	8.3%	37.9%	37.1%
2013	7.3%	52.6%	48.1%	7.8%	41.1%	41.1%	7.8%	37.8%	37.5%
2014	9.3%	51.5%	52.4%	8.4%	44.7%	44.4%	7.4%	39.2%	38.4%
2015	5.5%	32.8%	34.1%	7.6%	43.2%	43.2%	6.7%	37.3%	38.4%
2016	6.3%	35.2%	36.7%	7.0%	42.6%	43.6%	6.7%	37.1%	38.7%
2017	6.2%	43.7%	42.5%	6.1%	41.4%	43.1%	6.5%	36.9%	38.9%
2018	5.6%	51.5%	38.4%	5.4%	37.3%	40.1%	5.8%	34.4%	37.6%
2019	5.3%	41.7%	38.8%	5.5%	38.8%	41.8%	5.6%	34.2%	37.8%

Notes and Definitions

1. All percentages show clients who successfully left drug or alcohol treatment and did not then re-present to treatment within 6 months as a percentage of the total number of drug or alcohol users in the treatment
2. All figures relate to populations aged 18-75 years
3. Public Health England (PHE) revised and backdated these figures in November 2016. Consequently, these figures may differ from those quoted in previous editions of the compendium

Source: Public Health Outcomes Framework, [Public Health England \(PHE\)](#)

SECTION 3: HEALTH AND WELLBEING

TABLE 3i

SELF-REPORTED WELLBEING, BY AREA, 2019/20

Life Satisfaction: Overall, how satisfied are you with your life nowadays?

Area	Proportion of people scoring each category (%)			
	Low (0-4)	Medium (5-6)	High (7-8)	Very High (9-10)
Wirral	x	19.9	48.6	26.6
North West	5.3	14.4	50.1	30.2
England	4.7	13.9	51.7	29.7

Worthwhile: Overall, to what extent do you feel the things you do in your life are worthwhile?

Area	Proportion of people scoring each category (%)			
	Low (0-4)	Medium (5-6)	High (7-8)	Very High (9-10)
Wirral	x	14.8	48.8	32.7
North West	4.1	12.6	47.6	35.7
England	3.8	12.1	48.5	35.5

Happiness: Overall, how happy did you feel yesterday?

Area	Proportion of people scoring each category (%)			
	Low (0-4)	Medium (5-6)	High (7-8)	Very High (9-10)
Wirral	9.9	15.5	43.9	30.8
North West	9.4	16.2	40.2	34.3
England	8.7	16.6	40.6	34.1

Anxiety: Overall, how anxious did you feel yesterday?

Area	Proportion of people scoring each category (%)			
	Very Low (0-4)	Low (5-6)	Medium (7-8)	High (9-10)
Wirral	44.0	22.6	13.9	19.6
North West	41.2	21.1	15.8	21.8
England	38.4	22.9	16.8	21.9

Notes and Definitions

1. This data is from the Annual Population Survey (ONS)
2. All estimates are weighted (please see the ONS website for full details: www.ons.gov.uk)
3. Estimates may not add to 100% due to rounding
4. A value of 'x' indicates that data has been suppressed as the estimate is unreliable and/or the sample size is insufficient

Source: Office for National Statistics ([ONS](http://ons.gov.uk))

SECTION 3: HEALTH AND WELLBEING

TABLE 3j

PROPORTION OF PHYSICAL ACTIVITY LEVELS PER WEEK, BY AREA, 2015-16 TO 2019-20

Year	Wirral			North West			England		
	Active	Fairly Active	Inactive	Active	Fairly Active	Inactive	Active	Fairly Active	Inactive
November 2015 - 2016	60.9%	14.0%	25.1%	60.7%	12.1%	27.2%	62.1%	12.4%	25.6%
November 2016 - 2017	61.4%	15.4%	23.2%	61.4%	12.0%	26.6%	61.8%	12.5%	25.7%
November 2017 - 2018	57.1%	12.3%	30.6%	61.1%	12.5%	26.4%	62.6%	12.3%	25.1%
November 2018 - 2019	64.0%	13.4%	22.6%	62.3%	11.9%	25.8%	63.3%	12.2%	24.6%
November 2019 - 2020	62.4%	13.6%	24.0%	59.1%	11.4%	29.5%	61.4%	11.5%	27.1%

Notes and Definitions

1. These estimates include the activities of walking, cycling, dance, fitness and sporting activities, but exclude gardening which is outside of Sport England's remit
2. Activity is counted in moderate intensity equivalent minutes whereby each 'moderate' minute counts as one minute and each 'vigorous' minute counts as two moderate minutes
3. Depending on the number of minutes of moderate intensity equivalent (MIE)* physical activity, people are described as being:
 - Inactive: Doing less than 30 minutes a week
 - Fairly Active: Doing 30-149 minutes a week
 - Active: Doing at least 150 minutes a week
4. Moderate activity is defined as activity where you raise your breathing rate
5. Vigorous activity is where you are out of breath or are sweating (you may not be able to say more than a few words without pausing for breath)
6. For each survey there were an average of 500 respondents for Wirral, 27,000 respondents for the North West and 178,000 respondents for England

Source: [Active Lives Adult Survey](#)

SECTION 3: HEALTH AND WELLBEING

TABLE 3k

LEGAL ABORTION RATES BY AGE GROUP, BY AREA, 2018

Area	Abortion Rate per 1,000 Women Aged:							Number of Abortions
	Under 18	18-19	20-24	25-29	30-34	35+	All Ages	
Wirral	8.7	37.1	47.4	39.0	26.4	8.9	24.2	1,322
North West	10.6	26.8	33.3	29.3	23.1	9.3	19.6	27,959
England	8.1	23.9	29.4	25.4	20.0	9.3	17.5	191,555

TABLE 3k(i)

LEGAL ABORTION RATES BY AGE GROUP, BY AREA 2019

Area	Abortion Rate per 1,000 Women Aged:							Number of Abortions
	Under 18	18-19	20-24	25-29	30-34	35+	All Ages	
Wirral	11.6	28.3	46.7	39.3	23.1	8.5	23.1	1,261
North West	10.6	28.2	34.7	30.3	23.5	9.8	20.3	28,897
England	8.0	24.0	30.2	26.3	21.0	9.8	18.1	197,908

Notes and Definitions

1. This table summarises information from the abortion notification forms returned to the Chief Medical Officers of England and Wales in respect of abortions carried out in 2018 and 2019
2. Abortion rates for individual age groups are per 1,000 women in that age group. The figure for all ages is expressed as an age-standardised rate per 1,000 women aged 15-44 years

Source: [Department of Health and Social Care](#)

SECTION 3: HEALTH AND WELLBEING

TABLE 3I

TREND IN PREVALENCE OF DIAGNOSED HIV AND AIDS, WIRRAL, 2011 TO 2019

Year	Number	Prevalence Rate (per 1,000)
2011	156	0.86
2012	156	0.86
2013	166	0.92
2014	192	1.07
2015	202	1.13
2016	203	1.14
2017	215	1.21
2018	226	1.28
2019	239	1.36

Notes and Definitions

1. Number refers to the total number of cases aged 15-59 years seen at HIV services in a given year, including those who died during that year
2. Prevalence is expressed as a crude rate per 1,000 population and has not been adjusted to take account of differences in the age structure of the population (age standardised). In previous years the prevalence was calculated using the total population, from 2010 it is calculated on just those aged 15-59 years, this is in line with Public Health England (PHE) guidance
3. 'High prevalence' of HIV/AIDS is 2-5 diagnosed infections per 1,000 aged 15-59 years, and 'extremely high prevalence' is 5 or more diagnosed infections per 1,000 people aged 15-59 years. Wirral does not fall into either of these categories
4. Data supplied for previous years are updated on an annual basis due to clinic/laboratory resubmissions and improvements to data cleaning. Data may therefore differ from previous editions of the Statistical Compendium

Source: *Sexual and Reproductive Health Profile*, [Public Health England \(PHE\)](#)

SECTION 3: HEALTH AND WELLBEING

TABLE 3m

TREND IN UPTAKE OF NHS HEALTH CHECKS, PEOPLE AGED 40 – 74, BY AREA, 2019/20

Area	Invited for a Health Check	Had Health Check Completed	Take up Proportion
Arno Primary Care Alliance PCN	3,542	2,066	58.3%
Brighter Birkenhead PCN	4,760	1,842	38.7%
Healthier South Wirral PCN	3,677	1,454	39.5%
Healthier West Wirral PCN	5,436	2,004	36.9%
Moreton & Meols PCN	3,113	1,094	35.1%
North Coast Alliance PCN	1,076	493	45.8%
Wallasey Wellness PCN	1,537	1,129	73.5%
Wirral	23,141	10,082	43.6%
*North West	460,999	201,971	43.8%
*England	2,741,294	1,258,940	45.9%

Notes and Definitions

1. *Please note that North West and England figures refer to the time period of 2018/19, rather than 2019/20. This is due to the data for these areas being unavailable at the time of publishing
2. The [NHS Health Check programme](#) aims to help prevent heart disease, stroke, diabetes and kidney disease. Everyone between the ages of 40 and 74, who has not already been diagnosed with one of these conditions, will be invited (once every five years) to have a check to assess, raise awareness and support them to manage their risk of cardiovascular disease. A high take up of NHS Health Check is important to identify early signs of poor health leading to opportunities for early interventions
3. PCN's (Primary Care Networks) are collections of GPs across Wirral to help to deliver on the NHS Long Term Plan. For more information on Primary Care Networks, please visit: <https://www.wirralintelligenceservice.org/this-is-wirral/wirral-primary-care-networks/>

Source: GP Federations and Public Health England, [NHS Health Check Dashboard](#)

SECTION 3: HEALTH AND WELLBEING

TABLE 3n

**TREND IN COVERAGE OF NHS CERVICAL SCREENING PROGRAMME: WOMEN
AGED 25-49 AND 50-64, BY AREA, 2015/16 - 2019/20**

Area	Coverage Rate (%)									
	2015/16		2016/17		2017/18		2018/19		2019/20	
	25-49	50-64	25-49	50-64	25-49	50-64	25-49	50-64	25-49	50-64
Wirral	71.0	76.4	72.3	75.7	71.5	73.3	73.0	73.6	74.9	73.7
North West	70.8	77.8	70.8	77.0	70.1	75.1	71.3	75.5	72.2	75.6
England	71.8	79.4	71.2	78.4	69.1	76.2	69.8	76.2	70.2	76.1

Notes and Definitions

1. The National Cervical Screening Programme target is for 80% of eligible women aged 25-64 to be screened at least once every 3.5 years (25-49) and once every 5.5 years (50-64)
2. Coverage is defined as the percentage of women in a population who were eligible for screening at a given point in time, who were screened adequately within a specified period.
3. Women are eligible for screening if they are in the screening age range and have not become ineligible because their recall has been ceased for clinical reasons (most commonly due to hysterectomy)
4. Coverage is calculated as the number of women in this age group who have had an adequate screening test within the last 3.5/5.5 years as a percentage of the eligible population aged 25-64 years
5. Age groups are shown separately, as there are large differences in coverage rates between the age groups
6. NHS Digital retrospectively updates figures from previous years from time to time. The table above reflects these updates. The figures may differ from those quoted in previous compendiums

Source: [NHS Digital](#)

SECTION 3: HEALTH AND WELLBEING

TABLE 3o

COVERAGE OF NHS BREAST CANCER SCREENING PROGRAMME: WOMEN AGED 53-70, BY AREA, 2015/16 - 2019/20

Area	Coverage Rate %				
	2015/16	2016/17	2017/18	2018/19	2019/20
Wirral	76.8	77.1	76.9	76.7	76.7
North West	71.5	72.5	72.8	73.2	72.3
England	75.5	75.4	74.9	74.6	74.2

Notes and Definitions

1. The National Breast Screening Programme has the aim of screening 70% of eligible women aged 53-70 at least once every 3 years
2. The coverage rate is the percentage of women in the population who are eligible for screening at a particular point in time (31 March 2019 in this instance), who have had a test with a recorded result at least once within the screening round, i.e. in the previous three years. Currently coverage is best assessed using the 53-70 age group
3. Women are eligible for screening if they are in the screening age range and are not ineligible due to bilateral mastectomy
4. NHS Digital retrospectively updates figures from previous years. The table above reflects these updates. The figures may differ from those quoted in previous compendiums

Source: [NHS Digital](#)

SECTION 3: HEALTH AND WELLBEING

TABLE 3p

UPTAKE OF VACCINATIONS IN OLDER PEOPLE BY AREA, 2018/19 AND 2019/20

Vaccination	2018/19			2019/20		
	Wirral	North West	England	Wirral	North West	England
Flu Vaccine Uptake % (65+)	74.6	74.0	72.0	75.2	74.1	72.4
PPV Uptake % (65+)	72.5	70.8	69.2	71.9	70.1	69.0
Shingles Uptake % (70+)	32.0	31.0	31.9	28.6	24.9	26.5

Notes and Definitions

1. The influenza vaccination programme covers people aged 65+ or adults in clinical risk groups (e.g. those with respiratory conditions such as Chronic Obstructive Pulmonary Disease or COPD). Uptake data of influenza vaccinations is collected by the Public Health England (PHE) on behalf of the Department of Health
2. The target for flu vaccination is for 75% of at-risk groups and all those aged over 65 to be vaccinated. There is no target for pneumococcal polysaccharide vaccine (PPV) uptake; PHE suggest performance should be compared with England and previous years

Source: *Public Health Outcomes Framework*, [Public Health England \(PHE\)](#)

SECTION 3: HEALTH AND WELLBEING

TABLE 3q

NUMBER AND RATE OF PEOPLE WITH A LEARNING DISABILITY KNOWN TO GPs,
BY AREA, 2017/18 - 2019/20

Year	Wirral (Number)	Rate per 1,000		
		Wirral	North West	England
2017/18	2,318	6.9	5.1	4.9
2018/19	2,381	7.1	5.3	5.0
2019/20	2,418	7.1	5.2	5.1

Notes and Definitions

1. The indicator previously recorded adults (aged 18-64) with a learning disability known to GPs
2. The value is the rate per 1,000 patients on GP register list

Source: [NHS Digital](#)

SECTION 3: HEALTH AND WELLBEING

TABLE 3r

CARERS BY WIRRAL CONSTITUENCY, AS AT JUNE 2021

Area	Estimated number of Carers (Census, 2011)	Carers known to Wirral Council Department of Adult Social Services (DASS) (June-2021)	Claimants of Carer Allowance (Nov-2020)
Birkenhead	9,344	1,677	2,571
Wallasey	9,538	1,821	2,177
Wirral South	11,127	1,158	994
Wirral West	10,331	1,646	975
Wirral	40,340	6,302	6,712

Notes and Definitions

1. As carers do not always access services and/or not claim Carer Allowance, it is difficult to produce a definitive number of carers in Wirral
2. The Census 2011 figures are people who said that they provided any unpaid care (between 1-50 hours per week)
3. The figure of carers known to DASS (accurate as of 14th June 2021) reflects improvements in data quality over previously reported figures
4. Figures for Carer's Allowance may not sum due to rounding
5. Please note that a new Census will be conducted in 2021. Data from this new Census will be released in line with the ONS data release timetable when available

Source: Department of Adult Social Services (Wirral Council), [StatXplore](#) and Census 2011 ([ONS](#))

SECTION 3: HEALTH AND WELLBEING

TABLE 3s

TREND IN HOSPITAL ADMISSION EPISODES FOR MENTAL HEALTH CONDITIONS, IN CHILDREN AND YOUNG PEOPLE (0-17 YEARS), NUMBER AND CRUDE RATE PER 100,000 BY AREA, 2015/16 - 2019/20

Year	Wirral (Number)	Crude rate per 100,000		
		Wirral	North West	England
2015/16	80	118.4	111.6	85.9
2016/17	90	132.9	106.6	81.5
2017/18	105	155.1	105.6	84.7
2018/19	105	155.4	104.3	88.3
2019/20	145	214.8	111.3	89.5

Notes and Definitions

1. This table shows inpatient admission rate for mental health disorders per 100,000 population aged 0-17 years with a primary diagnosis codes F00 to F99 (mental and behavioural disorders)
2. Data refers to episodes of admissions and not persons. Any indicator based on hospital admissions may be influenced by local variation in referral and admission practices as well as variation in incidence or prevalence

Source: Child and Maternal Health Profiles, [Public Health England \(PHE\)](#)

SECTION 3: HEALTH AND WELLBEING

TABLE 3t

TREND IN HOSPITAL ADMISSION EPISODES AS A RESULT OF SELF-HARM IN CHILDREN AND YOUNG PEOPLE (10-24 YEARS), NUMBER AND DIRECTLY STANDARDISED RATE PER 100,000, BY AREA, 2015/16 – 2019/20

Year	Wirral (Number)	Directly Standardised Rate (DSR) per 100,000		
		Wirral	North West	England
2015/16	368	689.7	520.4	430.5
2016/17	282	543.3	473.5	407.1
2017/18	280	549.0	488.8	421.2
2018/19	310	604.1	517.4	444.0
2019/20	360	691.4	509.9	439.2

Notes and Definitions

1. This table shows the number of finished admission episodes in children aged between 10 and 24 years where the main recorded cause (defined as the first diagnosis code that represents an external cause (V01-Y98)) is between X60 and X84 (Intentional self-harm)
2. Data refers to episodes of admissions and not persons. Any indicator based on hospital admissions may be influenced by local variation in referral and admission practices as well as variation in incidence or prevalence
3. Directly age-standardised rates are used to allow comparison between populations which may contain different proportions of people of different ages

Source: Child and Maternal Health Profiles, [Public Health England \(PHE\)](#)

SECTION 3: HEALTH AND WELLBEING

TABLE 3u

INCIDENCE OF THE MOST COMMON CANCERS IN WIRRAL BY GENDER, WITH 95% CONFIDENCE LIMITS, WIRRAL, 2018

Cancer Type	Male				Female			
	Number	ASR	LCI	UCI	Number	ASR	LCI	UCI
Prostate Cancer	321	198.8	177.6	221.8	-	-	-	-
Breast Cancer	*	*	*	*	326	178.3	159.3	198.8
Colorectal Cancer	158	99.6	84.7	116.4	130	67.6	56.4	80.3
Cancer of the Trachea, Bronchus and Lung	153	96.5	81.8	113.1	148	76.1	64.3	89.5
Skin Cancer	60	38.6	29.5	49.8	52	28.9	21.5	38.0
Oesophageal Cancer	47	29.7	21.8	39.5	21	10.9	6.7	16.7
Kidney Cancer (not including Renal Pelvis)	40	24.9	17.8	34.0	34	17.9	12.3	25.1
Ovarian Cancer (including cancer of the fallopian tube(s))	-	-	-	-	45	24.9	18.1	33.4
Leukaemia	38	23.9	16.9	32.8	39	20.3	14.4	27.9
Uterine Cancer	-	-	-	-	44	23.1	16.8	31.1
Pancreatic Cancer	35	22.2	15.4	30.9	31	16.0	10.8	22.8
Bladder Cancer	35	22.1	15.4	30.8	10	5.3	2.5	9.8
Liver Cancer	35	22.1	15.4	30.8	13	7.0	3.7	12.1
Stomach Cancer	24	15.0	9.6	22.3	10	5.0	2.4	9.2
Cervical Cancer	-	-	-	-	22	13.9	8.7	21.0
All Cancers (excluding Non-Melanoma Skin Cancer)	1,207	758.1	715.8	802.1	1,120	599.3	564.5	635.8

Notes and Definitions

1. Cancers are ranked by ASR (Age Standardised Rate)
2. The number of cancers refers to newly diagnosed cancers (incidence) reported to regional cancer registries during 2017. An ASR is a weighted average of the age-specific cancer incidence rates accounting for age and gender, which are comparable over time. These are not the same as Standardised Registration Ratios (SRRs)
3. 95% Confidence Intervals (CIs) indicate the range within which the true value of the indicator has a 95% chance of falling, e.g. a 95% CI for Wirral men with stomach cancer is 8.5 to 21.1, this means that we can be 95% certain that the true value lies somewhere between 8.5 to 21.1
4. All Cancer refers to the total number of newly diagnosed cancers reported and includes some cancers not listed above, meaning figures may not sum
5. * denotes numbers less than 5 which have been suppressed. A hyphen denotes no data (usually because that type of cancer is gender specific)
6. Data for Non-Hodgkin's Lymphoma was not available at the time of publishing, and hence has not been included within the table above

Source: www.CancerData.nhs.uk

SECTION 3: HEALTH AND WELLBEING

TABLE 3v

GP DISEASE REGISTER PREVALENCE RATES, WIRRAL CLINICAL COMMISSIONING GROUP (CCG), 2019/20

Condition (age specified where relevant)	Wirral CCG		North West (%)	England (%)
	Total Number	Percentage (%)		
Asthma	25,764	7.6	7.1	6.5
Atrial Fibrillation	10,193	3.0	2.2	2.1
Cancer	13,164	3.9	3.2	3.1
Chronic Kidney Disease (18+)	13,742	5.1	4.4	4.1
Chronic Obstructive Pulmonary Disease (COPD)	8,821	2.6	2.5	1.9
Coronary Heart Disease	13,222	3.9	3.6	3.1
Dementia	3,163	0.9	0.8	0.8
Depression (18+) (Diagnosed in the past year)	5,793	2.1	1.5	1.2
Depression (18+) (Lifetime)	48,973	18.1	14.0	11.6
Diabetes Mellitus (17+)	20,392	7.4	7.3	7.1
Epilepsy (18+)	2,838	1.1	0.9	0.8
Heart Failure	4,448	1.3	1.0	0.9
Hypertension	55,582	16.4	14.8	14.1
Learning Disability (all ages)	2,418	0.7	0.5	0.5
Mental Health	3,706	1.1	1.1	0.9
Osteoporosis (50+)	1,748	1.2	0.8	0.9
Palliative Care	2,575	0.8	0.6	0.5
Rheumatoid Arthritis (16+)	2,043	0.7	0.8	0.8
Stroke/TIA	7,816	2.3	2.0	1.8

Notes and Definitions

1. The Quality and Outcomes Framework (QOF) is a reward and incentive system for GP surgeries to keep up to date disease/condition registers
2. The total number relates to patients registered with the condition in all Wirral practices
3. Prevalence calculated using total eligible practice populations as a denominator
4. As some indicators are age-specific, prevalence has been calculated using total eligible practice populations in the appropriate age groups where necessary
5. Newly diagnosed depression is those that have been diagnosed with depression within the last year, aged 18 and over. This is a subset of the lifetime prevalence of depression indicator

Source: [NHS Digital](#)

SECTION 3: HEALTH AND WELLBEING

TABLE 3w

GP DISEASE REGISTER PREVALENCE RATES (%), PRIMARY CARE NETWORK (PCN), 2019/20

Condition	Primary Care Network (PCN)						
	Arno Primary Care Alliance	Brighter Birkenhead	Healthier South Wirral	Healthier West Wirral	Moreton & Meols	North Coast Alliance	Wellbeing Wallasey
Atrial Fibrillation	2.5%	2.6%	3.2%	4.1%	3.0%	2.4%	2.7%
Coronary Heart Disease	3.6%	3.6%	3.8%	4.6%	4.2%	3.5%	3.7%
Heart Failure	1.2%	1.2%	1.6%	1.5%	1.3%	1.1%	1.2%
Hypertension	15.8%	15.3%	16.0%	19.0%	16.6%	14.5%	15.9%
Stroke/TIA	2.1%	2.1%	2.3%	2.9%	2.5%	2.1%	2.1%
Asthma	7.7%	7.8%	7.3%	7.5%	7.1%	7.4%	8.2%
Chronic Obstructive Pulmonary Disease (COPD)	3.1%	3.0%	2.4%	2.0%	2.7%	2.7%	2.6%
Obesity (18+)	13.1%	14.3%	12.8%	10.8%	13.3%	10.4%	14.3%
Cancer	3.1%	3.4%	4.4%	5.0%	4.3%	3.2%	3.4%
Chronic Kidney Disease (18+)	4.1%	4.7%	5.0%	6.5%	5.3%	4.5%	4.9%
Diabetes Mellitus (17+)	7.6%	7.6%	7.2%	7.0%	7.8%	7.5%	7.7%
Palliative Care	0.7%	0.8%	0.9%	0.7%	1.0%	1.1%	0.6%
Dementia	0.7%	1.1%	1.0%	1.1%	0.7%	0.6%	0.9%
Depression (18+) (Lifetime)	22.4%	20.3%	16.6%	13.5%	16.9%	19.4%	18.7%
Depression (18+) (Diagnosed in the past year)	3.1%	2.6%	1.7%	1.3%	2.0%	2.5%	2.1%
Epilepsy (18+)	1.2%	1.1%	1.0%	0.9%	1.0%	0.9%	1.2%
Learning Disability (all ages)	0.8%	0.9%	0.8%	0.4%	0.9%	0.7%	0.7%
Mental Health	1.3%	1.4%	0.9%	0.9%	1.0%	1.2%	1.1%
Osteoporosis (50+)	1.1%	1.2%	2.0%	1.2%	0.8%	0.8%	1.1%
Rheumatoid Arthritis (16+)	0.7%	0.7%	0.8%	0.8%	0.8%	0.6%	0.7%

Notes and Definitions

1. For more information on Primary Care Networks (PCN's), please visit the dedicated webpage on the [Wirral Intelligence Service Website](#)

Source: [NHS Digital](#)

SECTION 3: HEALTH AND WELLBEING

TABLE 3x

EMERGENCY ADMISSIONS IN RESIDENTS AGED 50+, BY AREA, 2016/17 - 2018/19 AND 2017/18 - 2019/20

Area	2016/17 - 2018/19		2017/18 - 2019/20	
	Number	Rate per 1,000	Number	Rate per 1,000
Bebington	3,453	172.3	3,310	162.9
Bidston & St James	4,010	261.8	3,902	253.1
Birkenhead & Tranmere	3,686	253.9	3,739	252.5
Bromborough	3,903	216.8	3,669	201.4
Clatterbridge	4,269	200.2	4,211	197.0
Cloughton	4,281	224.5	4,075	213.5
Eastham	3,665	196.2	3,644	193.1
Greasby, Frankby & Irby	3,656	172.2	3,524	164.8
Heswall	3,382	155.2	3,313	150.7
Hoylake & Meols	3,639	191.6	3,475	179.8
Leasowe & Moreton East	4,185	249.6	4,048	239.9
Liscard	3,733	203.2	3,600	194.2
Moreton West & Saughall Massie	3,655	191.8	3,449	180.8
New Brighton	4,126	215.8	4,050	206.8
Oxton	4,300	233.6	4,091	217.9
Pensby & Thingwall	3,563	183.8	3,513	178.3
Prenton	3,498	187.6	3,491	186.8
Rock Ferry	3,990	278.7	3,856	266.5
Seacombe	3,463	240.3	3,344	229.6
Upton	4,729	234.7	4,648	228.8
Wallasey	3,410	166.5	3,273	158.2
West Kirby & Thurstaston	3,554	185.0	3,352	172.2
Wirral	84,150	206.6	81,577	198.2

Notes and Definitions

1. 2016/17 - 2018/19 figures were calculated using the ONS mid-2016 population estimates. The 2017/18 - 2019/20 figures were calculated using the ONS mid-2017 population estimates
2. The data relates to emergency admissions generated between April 2016 to March 2019 and April 2017 to March 2020
3. Data presented is for 3 pooled years to smooth out random year-on-year variations which can characterise small datasets such as emergency admissions by ward
4. An emergency admission relates to those who have been admitted to hospital via a non-elective route
5. If you would like to see this information mapped then please visit [Local Insight](#)

Source: Hospital Episode Statistics ([HES](#))

SECTION 4: MORTALITY

TABLE 4a

INFANT MORTALITY RATES, BY AREA, 2017-19 (3 YEARS POOLED)

Stage of Infancy	Wirral		North West		England	
	Number of Deaths	Rate per 1,000	Number of Deaths	Rate per 1,000	Number of Deaths	Rate per 1,000
Stillbirths	39	4.0	1,016	4.1	7,545	4.0
Neonatal	28	2.9	799	3.3	5,381	2.9
Post-neonatal	10	1.0	307	1.3	2,053	1.1
Infant	38	3.9	1,106	4.5	7,434	3.9

Notes and Definitions

1. Stillbirth Rate: Number of foetal deaths occurring after 24 weeks of gestation, per 1,000 births
2. Neonatal Mortality Rate: Number of deaths to infants aged less than 28 days, per 1,000 live births
3. Post-neonatal Mortality Rate: Number of deaths to infants aged 28 days to 1 year, per 1,000 live births
4. Infant Mortality Rate: Number of deaths to infants aged less than 1 year, per 1,000 live births
5. Data is presented as a 3-year total, produced by aggregating the number of deaths for each three-year period (2017, 2018 and 2019). This is to smooth out random year-on-year variations

Source: *Child and Maternal Health Profiles*, [Public Health England \(PHE\)](#)

SECTION 4: MORTALITY

TABLE 4b

TREND IN INFANT MORTALITY, WIRRAL AND ENGLAND, 2001-03 TO 2017-19
(3 YEARS POOLED)

Years	Wirral				England			
	Total No. of Infant Deaths	Infant Mortality Rate	95% Confidence Intervals		Total No. of Infant Deaths	Infant Mortality Rate	95% Confidence Intervals	
			Lower Limit	Upper Limit			Lower Limit	Upper Limit
2001-03	41	4.1	2.9	5.5	9,210	5.4	5.2	5.5
2002-04	43	4.2	3.0	5.6	9,215	5.2	5.1	5.3
2003-05	55	5.2	3.9	6.7	9,291	5.1	5.0	5.2
2004-06	52	4.9	3.6	6.4	9,338	5.0	4.9	5.1
2005-07	51	4.7	3.5	6.2	9,397	4.9	4.8	5.0
2006-08	50	4.5	3.4	6.0	9,503	4.8	4.7	4.9
2007-09	52	4.7	3.5	6.1	9,421	4.7	4.6	4.8
2008-10	56	5.0	3.8	6.5	9,260	4.6	4.5	4.7
2009-11	53	4.7	3.5	6.2	9,062	4.4	4.3	4.5
2010-12	59	5.2	3.9	6.7	8,822	4.3	4.2	4.4
2011-13	53	4.7	3.6	6.2	8,467	4.1	4.0	4.2
2012-14	44	4.0	2.9	5.4	8,029	4.0	3.9	4.1
2013-15	35	3.3	2.3	4.6	7,734	3.9	3.8	4.0
2014-16	41	3.9	2.8	5.3	7,710	3.9	3.8	4.0
2015-17	51	4.9	3.7	6.5	7,734	3.9	3.8	4.0
2016-18	51	5.1	3.8	6.7	7,608	3.9	3.8	4.0
2017-19	38	3.9	2.8	5.3	7,434	3.9	3.9	4.0

Notes and Definitions

1. The Infant Mortality Rate is defined as the number of deaths in infants aged less than 1 year, per 1,000 live births to mothers resident in the area
2. Data is presented as 3-year totals, produced by aggregating numbers of births and deaths for each three-year period (e.g. 2001-03, 2002-04, etc.). This is to smooth out random year-on-year variations
3. Confidence Intervals (CIs) indicate the range within which the true value of the indicator has a 95% chance of falling. For example, a 95% CI of 2.8 to 5.3, for Wirral for 2017-19, means that we can be 95% certain the true value lies somewhere between these two values

Source: *Child and Maternal Health Profiles*, [Public Health England \(PHE\)](#)

SECTION 4: MORTALITY

TABLE 4c

ALCOHOL SPECIFIC MORTALITY, BY AREA, 2017-19 (3 YEARS POOLED)

Area	Alcohol-specific mortality: Males, all ages (2017-19)				Alcohol-specific mortality: Females, all ages (2017-19)			
	Count	DSR	Lower 95% CI	Upper 95% CI	Count	DSR	Lower 95% CI	Upper 95% CI
Wirral	109	22.9	18.8	27.7	59	11.5	8.8	14.9
North West	1,976	19.3	18.4	20.2	1,082	10.1	9.5	10.7
England	11,584	14.9	14.6	15.2	5,773	7.1	6.9	7.3

Notes and Definitions

1. The results are presented as directly age-standardised rates (DSR) per 100,000 population (European standard population)
2. 95% Confidence Intervals (CIs) indicate the range within which the true value of rate lies, e.g. a 95% CI for males in Wirral is 18.8 to 27.7 means that we can be 95% certain that the true value lies somewhere between the two values
3. Data is presented as a 3-year total, produced by aggregating the number of deaths for each three-year period (2017, 2018 and 2019). This is to smooth out random year-on-year variations
4. Deaths recorded are from alcohol specific conditions (conditions which can only be caused by alcohol). See [Local Alcohol Profiles for England](#) guidance for full list of ICD 10 codes. ICD-10 groupings can be found in the Appendix of this compendium
5. The LAPE dataset was refreshed on 2 June 2015 and includes an amended methodology for generating the mortality indicators by searching all cause of deaths fields for three conditions (Ethanol poisoning, Methanol poisoning, Toxic effect of alcohol) which are not permitted as an underlying cause of death. This amendment has been applied to the full time series. Therefore, data in issues of the Compendium prior to 2016 are not comparable

Source: *Local Alcohol Profiles for England (LAPE)*, [Public Health England \(PHE\)](#)

SECTION 4: MORTALITY

TABLE 4d

PREMATURE MORTALITY BY CAUSE OF DEATH, WIRRAL, 2017-19 (3 YEARS POOLED)

Cause of Death	Total Number of Deaths	DSR	95% Confidence Interval	
			Lower Limit	Upper Limit
Cancer	1,380	144.7	137.1	152.5
Cardiovascular Disease	680	71.6	66.3	77.2
Respiratory Disease	481	50.3	45.9	55.0
Liver Disease	221	24.0	20.9	27.4
Suicide and Undetermined Injury	72	8.7	6.8	10.9

Notes and Definitions

1. Premature mortality is defined as deaths in those aged under 75 years
2. The results are presented as directly age-standardised rates (DSR) per 100,000 population (European standard population)
3. Data is presented as a 3-year total, produced by aggregating the number of deaths for each three-year period (2017, 2018 and 2019). This is to smooth out random year-on-year variations
4. For more information regarding which ICD-10 codes were used to calculate these figures please see Table 8a
5. 95% Confidence Intervals (CIs) indicate the range within which the true value of rate lies, e.g. a 95% CI of 137.1 to 152.5 means that we can be 95% certain that the true value lies between these two values

Source: Mortality Profile, [Public Health England \(PHE\)](#)

SECTION 4: MORTALITY

TABLE 4e

STANDARDISED MORTALITY RATIOS (SMR) BY BROAD CAUSE, WITH 95% CONFIDENCE INTERVALS, WIRRAL LOCAL AUTHORITY, 2017-19

Cause	Number	SMR	95% Confidence Intervals	
			Lower Limit	Upper Limit
Cancer	3,066	110.1	106.3	114.1
<i>Breast cancer</i>	218	114.0	98.9	129.1
<i>Lung cancer</i>	622	109.9	101.3	118.5
<i>Prostate cancer</i>	204	97.4	84.0	110.7
<i>Colorectal cancer</i>	317	111.3	99.1	123.6
Circulatory diseases	2,411	95.9	92.0	99.7
Respiratory diseases	1,807	127.4	121.5	133.3
<i>COPD</i>	684	131.0	121.2	140.9
<i>Pneumonia</i>	621	122.4	112.8	132.0
Mental and behavioural causes	1,044	108.2	101.6	114.7
Digestive causes	527	110.6	101.2	120.0
External causes	449	117.1	106.3	128.0
All causes	11,256	109.3	107.2	111.3

Notes and Definitions

1. The results are presented as indirectly standardised mortality ratios (SMR) for all ages
2. Standardised Mortality Ratios (SMR) are a way of comparing death rates in a particular area with those in the national population. The SMR for England is 100, and in this table, the SMR for Wirral in 2017-19 is 109.3. This means that Wirral has a mortality rate 9.3% higher than the national average (after taking account of differences in the age structure of the two populations)
3. In some cases, the cause of death mentioned on the death certificate may be amended by ONS following discussion with the relevant clinician. The data presented in this table is based on the underlying causes of death
4. 95% Confidence Intervals (CIs) indicate the range within which the true value of the rate will fall, e.g. a 95% CI for all causes of mortality in Wirral of 107.2 to 111.3 means that we can be 95% certain the true value lies between these two figures
5. For more information regarding which ICD-10 codes were used to calculate these figures please see Table 8a

Source: Office for National Statistics ([ONS](#)) and [NOMIS](#)

SECTION 4: MORTALITY

TABLE 4f

TREND IN MORTALITY FROM ALL CAUSES OF DEATH, BY AREA, 2008 TO 2019

Year	Wirral						North West		England	
	Males		Females		Persons		Persons		Persons	
	Number of Deaths	Rate per 100,000	Number of Deaths	Rate per 100,000	Number of Deaths	Rate per 100,000	Number of Deaths	Rate per 100,000	Number of Deaths	Rate per 100,000
2008	1,642	1,352.9	1,985	1,033.5	3,627	1,172.3	70,740	*	475,763	1,091.8
2009	1,677	1,355.3	1,894	980.6	3,571	1,137.1	67,937	*	459,241	1,033.7
2010	1,617	1,298.8	1,928	987.5	3,545	1,114.1	67,738	*	461,017	1,017.0
2011	1,589	1,216.1	1,781	890.8	3,370	1,036.3	66,372	*	452,862	978.6
2012	1,639	1,236.9	1,902	938.4	3,541	1,065.9	68,262	*	466,779	987.4
2013	1,766	1,319.4	1,867	911.0	3,633	1,084.8	69,045	1,089.1	473,552	979.2
2014	1,693	1,094.5	1,855	1,115.9	3,548	1,105.6	63,818	957.8	468,875	863.2
2015	1,748	1,255.6	2,021	976.1	3,769	1,096.9	71,299	1,088.7	495,309	986.6
2016	1,807	1,271.3	1,911	923.3	3,718	1,070.4	71,315	1,069.4	490,791	959.8
2017	1,709	1,161.3	1,841	872.8	3,550	1,004.5	71,657	1,059.6	498,882	958.8
2018	1,869	1,251.3	1,920	912.4	3,789	1,062.2	72,278	1,053.1	505,859	957.2
2019	1,837	1,217.4	1,918	893.0	3,755	1,030.3	72,016	1,028.0	496,370	918.0

Notes and Definitions

1. The age-standardised mortality rates for 2013 are standardised to the 2013 European Standard Population (expressed as a rate per 100,000 population). Age-standardised rates are used to allow comparison between populations which may contain different proportions of people of different ages. The European standard populations were updated in 2014. This affected the calculation of the 2013 rate and means that figures from 2013 onwards are not comparable with previous years
2. The results are presented as directly age-standardised rates (DSR) per 100,000 population
3. *Figures not available at time of publishing

Source: Office for National Statistics ([ONS](#))

[Back to Contents Page](#)

SECTION 4: MORTALITY

TABLE 4g

MORTALITY FROM ALL CAUSES BY AREA, 2017-19 (3 YEARS POOLED)

Area	Number of Deaths	DSR per 100,000	Lower 95% CI	Upper 95% CI
Bebington	562	1,044.9	958.5	1,131.3
Bidston & St James	510	1,456.1	1,329.7	1,582.5
Birkenhead & Tranmere	426	1,311.9	1,187.3	1,436.5
Bromborough	514	1,140.1	1,041.6	1,238.7
Clatterbridge	600	969.4	891.8	1,047.0
Claughton	727	1,375.7	1,275.7	1,475.7
Eastham	461	895.9	814.1	977.7
Greasby, Frankby & Irby	435	718.8	651.3	786.4
Heswall	559	791.0	725.4	856.6
Hoylake & Meols	624	978.1	901.3	1,054.8
Leasowe & Moreton East	443	1,104.7	1,001.8	1,207.6
Liscard	527	1,162.0	1,062.8	1,261.2
Moreton West & Saughall Massie	431	920.1	833.2	1,007.0
New Brighton	564	1,122.1	1,029.5	1,214.7
Oxton	421	894.1	808.7	979.5
Pensby & Thingwall	454	792.0	719.1	864.9
Prenton	438	920.3	834.1	1,006.5
Rock Ferry	536	1,568.7	1,435.9	1,701.6
Seacombe	466	1,443.5	1,312.4	1,574.5
Upton	713	1,220.4	1,130.8	1,310.0
Wallasey	414	741.7	670.3	813.2
West Kirby & Thurstaston	420	748.3	676.7	819.8
Wirral	11,245	1,036.5	1,017.3	1,055.6

Notes and Definitions

1. The results are presented as directly age-standardised rates (DSR) per 100,000 population
2. 95% Confidence Intervals (CIs) indicate the range within which the true value of rate lies, e.g. a 95% CI for deaths in Bebington is 958.5 to 1,131.3, which means that we can be 95% certain that the true value lies somewhere between 958.5 and 1,131.3
3. Three calendar years have been presented together, to ensure robustness at the small area level shown (ward)

Source: Office for National Statistics ([ONS](#))

SECTION 4: MORTALITY

TABLE 4h

PLACE OF DEATH BY AREA, 2019

Area	Age Group	Hospital (%)	Home (%)	Care Home (%)	Hospice (%)	Other (%)
Wirral	0-64	51.0	30.9	3.6	7.8	6.7
	65-74	54.5	28.3	10.1	5.1	1.9
	75-84	54.5	22.1	19.4	2.7	1.2
	85+	46.4	16.1	35.9	0.3	1.4
	All Ages	50.7	22.0	22.1	2.9	2.2
North West	0-64	46.8	34.8	2.8	9.2	6.3
	65-74	50.3	30.6	8.4	9.2	1.8
	75-84	50.2	24.5	18.7	5.5	1.4
	85+	43.9	16.3	37.0	2.1	1.1
	All Ages	47.4	24.4	20.8	5.6	2.1
England	0-64	44.0	34.4	3.1	10.5	8.0
	65-74	48.3	30.5	9.1	9.8	2.3
	75-84	48.4	24.8	19.4	5.9	1.5
	85+	41.4	17.8	37.5	2.3	1.1
	All Ages	44.9	24.4	22.5	5.8	2.5

Notes and Definitions

1. Percentages have been rounded so may not exactly sum

Source: Palliative and End of Life Care Profiles, [Public Health England \(PHE\)](#)

SECTION 5: ECONOMY AND BUSINESS

TABLE 5a

TREND IN AVERAGE PERSONAL INCOME BY GENDER, WIRRAL AND ENGLAND,
2009 TO 2020

Year	Wirral			England		
	Male	Female	Persons	Male	Female	Persons
2009	£27,096	£16,231	£20,190	£27,032	£16,250	£21,680
2010	£26,270	£16,487	£21,211	£26,732	£16,431	£21,564
2011	£24,933	£16,201	£20,644	£26,807	£16,271	£21,454
2012	£26,365	£15,952	£21,317	£27,040	£16,750	£21,813
2013	£27,016	£17,271	£21,433	£27,588	£17,090	£22,168
2014	£27,642	£16,745	£21,551	£27,575	£17,226	£22,350
2015	£28,958	£16,664	£22,279	£28,000	£17,437	£22,654
2016	£27,882	£17,320	£22,167	£28,779	£18,000	£23,337
2017	£28,735	£17,637	£22,350	£29,246	£18,270	£23,754
2018	£27,286	£18,907	£22,953	£29,791	£18,716	£24,283
2019	£30,348	£19,568	£24,136	£30,765	£19,616	£25,150
2020	£29,380	£20,114	£23,984	£31,813	£20,512	£26,055

Notes and Definitions

1. Figures for income are median, annual, gross figures
2. The median is the value below which 50% of employees fall. It is preferred over the mean for earnings data as it is influenced less by extreme values and because of the skewed distribution of earnings data
3. Figures are for all workers, regardless of whether full or part-time. This contributes to lower overall figures for women, because as well as earning less than men, women are also more likely to be in part-time work
4. The figures for persons are *not* the mean average of the male and female figures. This is because these calculations are weighted based on the population of each gender in employment. For example, 60% of all people in employment in Wirral may be male and 40% may be female; therefore, a greater weighting is given to the male income figure rather than the female

Source: [NOMIS](#)

SECTION 5: ECONOMY AND BUSINESS

TABLE 5b

AVERAGE HOUSEHOLD INCOME, BY AREA, 2018

Area	Total annual household income (£'s)	Net annual household income (£'s)
Bebington	43,468	31,831
Bidston & St James	32,005	27,321
Birkenhead & Tranmere	29,303	27,459
Bromborough	37,565	28,670
Clatterbridge	47,554	34,693
Cloughton	38,688	30,415
Eastham	41,453	30,237
Greasby, Frankby & Irby	43,981	34,045
Heswall	51,021	37,727
Hoylake & Meols	44,501	32,220
Leasowe & Moreton East	35,920	27,505
Liscard	36,148	27,763
Moreton West & Saughall Massie	39,434	29,947
New Brighton	36,916	27,957
Oxton	39,835	31,201
Pensby & Thingwall	43,279	32,590
Prenton	39,909	30,756
Rock Ferry	31,889	26,908
Seacombe	30,555	26,113
Upton	35,454	27,575
Wallasey	42,202	30,393
West Kirby & Thurstaston	47,526	37,075
Birkenhead Constituency	35,030	28,938
Wallasey Constituency	36,805	28,252
Wirral South Constituency	44,120	32,565
Wirral West Constituency	42,654	32,499
Wirral	39,232	30,337
England	43,966	34,875

Notes and Definitions

1. Small area income estimates are available from the Office for National Statistics at middle layer super output area (MSOA) level in England and Wales, but have been aggregated up to Ward level estimates using our Local Insight mapping tool
2. Total annual household income is the sum of the gross income of every member of the household plus any income from benefits such as Working Families Tax Credits
3. Net annual household income is the sum of the net income of every member of the household. It is calculated using the same components as total income, but income is a net of: income tax payments; national insurance contributions; domestic rates/council tax; contributions to occupational pension schemes; all maintenance and child support payments; and parental contributions to students living away from home

Source: Office for National Statistics ([ONS](#)) and [Local Insight](#)

SECTION 5: ECONOMY AND BUSINESS

TABLE 5c

CLAIMANT COUNT, NUMBER AND PERCENTAGE BY WORKING-AGE POPULATION BY GENDER AND AREA, MARCH 2021

Area	Male		Female		Persons	
	Number	%	Number	%	Total	%
Bebington	225	4.8	125	2.7	350	3.8
Bidston & St James	640	14.2	415	7.6	1,055	10.6
Birkenhead & Tranmere	960	17.6	535	9.6	1,500	13.6
Bromborough	365	7.4	225	4.4	595	5.9
Clatterbridge	125	3.2	75	2.0	200	2.6
Claughton	385	8.8	195	4.4	580	6.6
Eastham	165	4.0	120	2.9	285	3.5
Greasby, Frankby & Irby	135	3.7	100	2.5	235	3.1
Heswall	100	3.0	80	2.3	180	2.7
Hoylake & Meols	180	4.7	110	2.9	290	3.8
Leasowe & Moreton East	420	10.0	265	5.6	690	7.7
Liscard	525	10.6	315	6.2	835	8.4
Moreton West & Saughall Massie	245	6.1	145	3.4	390	4.7
New Brighton	420	8.8	210	4.5	630	6.7
Oxton	305	7.2	165	4.0	470	5.6
Pensby & Thingwall	135	3.9	90	2.4	225	3.2
Prenton	325	7.4	165	3.6	490	5.5
Rock Ferry	575	13.1	350	7.3	930	10.1
Seacombe	755	16.3	455	9.0	1,210	12.5
Upton	360	7.9	230	4.4	595	6.0
Wallasey	210	4.9	140	3.1	350	4.0
West Kirby & Thurstaston	155	4.5	105	3.0	260	3.8
Birkenhead Constituency	3,190	11.6	1,825	6.3	5,025	8.9
Wallasey Constituency	2,575	9.6	1,530	5.4	4,105	7.4
South Wirral Constituency	980	4.7	625	2.9	1,610	3.8
West Wirral Constituency	965	5.1	635	3.1	1,605	4.1
Wirral	7,720	8.2	4,620	4.7	12,345	4.7
North West	198,040	8.7	126,240	5.5	324,280	7.1
England	1,358,005	7.7	951,225	5.4	2,309,230	6.6

Notes and Definitions

1. Some totals may not sum due to rounding (figures rounded to the nearest 5)
2. The claimant count measures the number of people claiming benefit principally for the reason of being unemployed. The claimant count includes all out of work Universal Credit claimants, as well as all Job Seeker's Allowance (JSA) claimants
3. Ideally only those Universal Credit claimants who are out of work and required to seek work *should* be included in the Claimant Count, but it is not currently possible to produce figures on this basis. The Claimant Count therefore currently includes some claimants of Universal Credit who are not required to look for work, for example due to illness or disability. The Claimant Count also includes people who do not receive payment. For example, some claimants will have had their benefits stopped for a limited period by Jobcentre Plus and some people claim JSA to receive National Insurance Credits only

Source: [NOMIS](#)

SECTION 5: ECONOMY AND BUSINESS

TABLE 5d

NUMBER OF EMPLOYMENT SUPPORT ALLOWANCE (ESA) & INCAPACITY/SEVERE DISABLEMENT ALLOWANCE CLAIMANTS BY CONDITION AND AREA, AUGUST 2020

Ward	Constituency	Mental conditions	Nervous system	Respiratory or Circulatory	Musculo-skeletal	Injury, poisoning	Other	Total
Bebington	Wirral South	223	29	36	46	7	107	457
Bidston & St James	Birkenhead	602	87	110	165	20	242	1,232
Birkenhead & Tranmere	Birkenhead	888	79	74	160	18	244	1,479
Bromborough	Wirral South	385	39	46	85	12	172	745
Clatterbridge	Wirral South	136	27	12	28	6	78	291
Cloughton	Birkenhead	364	63	44	64	12	146	699
Eastham	Wirral South	158	29	35	46	10	86	368
Greasby, Frankby & Irby	Wirral West	85	19	24	47	5	90	266
Heswall	Wirral South	65	13	9	9	7	38	141
Hoylake & Meols	Wirral West	153	33	15	22	5	71	303
Leasowe & Moreton East	Wallasey	400	51	64	111	9	156	793
Liscard	Wallasey	449	47	52	105	17	147	820
Moreton West & Saughall Massie	Wallasey	216	45	42	52	9	125	490
New Brighton	Wallasey	456	64	23	63	15	172	794
Oxton	Birkenhead	256	32	35	59	6	121	511
Pensby & Thingwall	Wirral West	144	36	27	52	7	86	351
Prenton	Birkenhead	263	46	31	66	10	120	534
Rock Ferry	Birkenhead	582	56	72	131	33	205	1,085
Seacombe	Wallasey	594	60	84	113	13	244	1,101
Upton	Wirral West	387	52	69	113	17	175	819
Wallasey	Wallasey	169	42	25	55	8	104	404
West Kirby & Thurstaston	Wirral West	91	26	20	29	..	70	239
Total	Wirral	7,070	990	949	1,621	253	2,999	13,922

Notes and Definitions

1. Table shows ESA (Employment & Support Allowance), which replaced Incapacity Benefit in January 2011, plus those still on Incapacity Benefit and Severe Disablement Allowance (due to not yet having been assessed and moved onto ESA)
2. These benefits are paid to people aged between 16-59/64 (ESA) or 16+ (IB/SDA) who cannot work due to illness and disability

Source: [StatXplore](#)

SECTION 5: ECONOMY AND BUSINESS

TABLE 5e

BREAKDOWN OF EMPLOYEE JOBS BY INDUSTRY, BY AREA, 2019

Industry	Wirral		North West	Great Britain
	Employee Jobs	%	%	%
Mining and Quarrying	0	0.0	0.1	0.2
Manufacturing	9,000	8.8	9.3	8.0
Electricity, Gas, Steam and Air Conditioning Supply	400	0.4	0.5	0.4
Water Supply, Sewerage, Waste Management and Remediation Activities	900	0.9	0.7	0.7
Construction	4,500	4.4	4.6	4.9
Wholesale and Retail Trade, Repair of Motor Vehicles and Motorcycles	15,000	14.7	16.3	15.0
Transportation and Storage	3,500	3.4	5.6	4.9
Accommodation and Food Service Activities	7,000	6.9	6.9	7.7
Information and Communication	1,500	1.5	2.8	4.3
Financial and Insurance Activities	1,000	1.0	2.8	3.5
Real Estate Activities	1,500	1.5	1.5	1.7
Professional, Scientific and Technical Activities	8,000	7.8	8.8	8.8
Administrative and Support Service Activities	6,000	5.9	8.6	8.9
Public Administration and Defence, Compulsory Social Security	5,000	4.9	4.6	4.4
Education	10,000	9.8	8.0	8.7
Human Health and Social Work Activities	23,000	22.5	14.2	13.1
Arts, Entertainment and Recreation	3,500	3.4	2.6	2.5
Other Service Activities	2,500	2.5	1.9	2.0
Total	102,000	100.0	100.0	100.0

Notes and Definitions

1. These figures have been rounded to the nearest 100
2. Employee jobs excludes self-employed, government-supported trainees and HM Forces
3. This data excludes the category of farm-based agriculture
4. Percentages may not sum due to rounding

Source: [NOMIS](#)

SECTION 5: ECONOMY AND BUSINESS

TABLE 5f

EMPLOYMENT BY OCCUPATION, BY AREA, 2020

Occupation	Wirral (Number)	Wirral	North West	England
		%		
1) Manager, Directors and Senior Officials	11,200	7.8	10.4	11.8
2) Professional Occupations	29,400	20.5	21.1	22.9
3) Associate Professional and Technical	23,200	16.2	14.8	15.9
SOC 2010 Major Group 1-3	63,800	44.5	46.3	50.6
4) Administrative and Secretarial	20,400	14.3	11.0	10.1
5) Skilled Trades Occupations	11,000	7.7	9.3	9.1
SOC 2010 Major Group 4-5	31,400	22.0	20.3	19.2
6) Caring, Leisure and Other Service Occupations	13,900	9.7	8.8	8.7
7) Sales and Customer Service Occupations	13,500	9.4	7.9	6.7
SOC 2010 Major Group 6-7	27,400	19.1	16.7	15.4
8) Process Plant and Machine Operatives	8,300	5.8	6.1	5.4
9) Elementary Occupations	10,800	7.5	10.3	9.2
SOC 2010 Major Group 8-9	19,100	13.3	16.4	14.6
Total in Employment	141,700	100.0	100.0	100.0

Notes and Definitions

1. Numbers and percentages are for those aged 16+
2. These figures have been rounded to the nearest 100. Likewise, the percentages have also been rounded so may not sum
3. Occupations are classified according to the Standard Occupation Classification 2010. Descriptions of the job titles included in each code are available in the [SOC manuals](#)
4. This data refers to the period January to December 2020 inclusive

Source: [NOMIS](#)

SECTION 5: ECONOMY AND BUSINESS

TABLE 5g

SURVIVAL OF NEWLY BORN ENTERPRISES, BY BIRTH OF UNITS IN 2013 AND THEIR SURVIVAL RATES, 2014 TO 2019, BY AREA

Area	Births in 2014	1-year survival	1-year %	2-year survival	2-year %	3-year survival	3-year %	4-year survival	4-year %	5-year survival	5-year %
Wirral	1,275	1,190	93.3	980	76.9	795	62.4	615	48.2	545	42.7
North West	34,275	31,800	92.8	26,010	75.9	20,865	60.9	16,675	48.7	14,230	41.5
England	312,920	288,870	92.3	237,490	75.9	192,030	61.4	154,440	49.4	132,975	42.5

Notes and Definitions

1. Births are identified by making comparison of annual active population files and identifying those present in the latest file, but not the two previous ones. For example, in this instance, an enterprise birth is identified as a business that was present in 2014, but did not exist in 2013 or 2012
2. An enterprise death is defined as a business that was on the active file in a given year (e.g. 2015) but was no longer present in the active file in both of the following two years (e.g. 2016 and 2017). In order to provide an early estimate of deaths, an adjustment has been made to the latest two years deaths to allow for reactivations. These figures are provisional and subject to revision

Source: Office for National Statistics ([ONS](#))

SECTION 5: ECONOMY AND BUSINESS

TABLE 5h

TREND IN JOB DENSITY, BY AREA, 2000 TO 2019

Year	Wirral (Number of Jobs)	Wirral	North West	England
		Job density		
2000	112,000	0.58	0.75	0.80
2001	112,000	0.58	0.76	0.80
2002	113,000	0.59	0.77	0.80
2003	118,000	0.60	0.77	0.80
2004	115,000	0.59	0.78	0.80
2005	113,000	0.58	0.76	0.81
2006	111,000	0.57	0.76	0.79
2007	111,000	0.56	0.76	0.80
2008	111,000	0.56	0.75	0.79
2009	109,000	0.55	0.74	0.77
2010	110,000	0.55	0.73	0.77
2011	112,000	0.56	0.74	0.78
2012	111,000	0.56	0.75	0.79
2013	113,000	0.57	0.77	0.80
2014	112,000	0.57	0.78	0.82
2015	119,000	0.61	0.80	0.84
2016	113,000	0.58	0.82	0.86
2017	125,000	0.64	0.83	0.87
2018	118,000	0.61	0.84	0.87
2019	119,000	0.61	0.86	0.88

Notes and Definitions

1. This table shows the rate of jobs per resident aged 16-64. For example, a job density of 1.0 would mean that there is one job for every resident aged 16-64
2. The total number of jobs is a workplace-based measure and comprises employee jobs, self-employed, government-supported trainees and HM Forces
3. The number of residents aged 16-64 figures used to calculate job density is based on the relevant mid-year population estimates

Source: [NOMIS](#)

SECTION 5: ECONOMY AND BUSINESS

TABLE 5i

NUMBER OF EMPLOYEES IN THE PUBLIC SECTOR AND PRIVATE SECTOR, BY AREA, 2017 TO 2019

Year	Wirral		North West		England	
	Number	%	Number	%	Number	%
Private Sector Employees						
2017	76,388	73.6%	2,691,883	81.6%	21,611,162	83.7%
2018	76,403	75.3%	2,720,132	81.7%	21,713,684	83.7%
2019	77,342	76.1%	2,787,650	81.9%	22,047,937	83.8%
Public Sector Employees						
2017	27,355	26.4%	606,334	18.4%	4,217,464	16.3%
2018	25,033	24.7%	607,987	18.3%	4,232,582	16.3%
2019	24,301	23.9%	614,888	18.1%	4,259,489	16.2%

Notes and Definitions

1. The figures include businesses registered for PAYE but not for VAT and so are not comparable with BRES datasets for years prior to 2015
2. Further information regarding the inclusion of PAYE-only businesses is provided in this BRES news article published on 2 October 2017 at <https://www.nomisweb.co.uk/articles/1062.aspx>

Source: [NOMIS](#)**SECTION 5: ECONOMY AND BUSINESS**

TABLE 5j

INDICATORS OF GROSS VALUE ADDED (GVA), BY AREA, 2017 TO 2019

Area	Year	Total GVA (£ million)	GVA per head (£ per head)
Wirral	2017	5,042	15,619
	2018	4,973	15,386
	2019	5,129	15,381
North West	2017	177,016	24,387
	2018	182,048	24,965
	2019	188,146	25,629
England	2017	1,586,879	28,531
	2018	1,641,971	29,333
	2019	1,702,078	30,239

Notes and Definitions

1. Gross Value Added (GVA) is the value generated by any unit engaged in the production of goods and services. GVA per head is a useful way of comparing regions of different sizes. It is not, however, a measure of regional productivity

Source: Office for National Statistics ([ONS](#))

SECTION 6: TRANSPORT, HOUSING AND THE ENVIRONMENT

TABLE 6a

TREND OF NEW DWELLINGS COMPLETED IN WIRRAL AND ENGLAND, 2011/12 - 2019/20

Period	Wirral		England Percentage (%)
	Number	Percentage (%)	
2011/12	170	0.1	0.5
2012/13	170	0.1	0.4
2013/14	200	0.1	0.5
2014/15	260	0.2	0.5
2015/16	150	0.1	0.6
2016/17	160	0.1	0.6
2017/18	400	0.3	0.7
2018/19	380	0.3	0.7
2019/20	210	0.1	0.7

Notes and Definitions

1. This table shows the number of new dwellings (rounded to the nearest 10) and new dwellings as a percentage of all dwellings

Source: [LGInform](#)

SECTION 6: TRANSPORT, HOUSING AND THE ENVIRONMENT

TABLE 6b

PROJECTED NUMBER OF HOUSES, BY AREA, 2021 TO 2041

Area	Houses (thousands)					% change 2021-2041
	2021	2026	2031	2036	2041	
Wirral	145.2	148.3	151.2	154.0	156.6	7.9%
North West	3,178.4	3,263.7	3,344.8	3,425.7	3,501.7	10.2%
England	23,688.9	24,524.7	25,299.4	26,033.7	26,705.2	12.7%

Notes and Definitions

1. Housing projections are usually updated every 2 years. The figures above use the 2018-based projections. It should be noted that these 2018-based estimates differ from older estimates which some departments within local authorities are still obliged to use in certain circumstances (e.g. planning teams use the 2014-based projections)

Source: Office for National Statistics ([ONS](#))

SECTION 6: TRANSPORT, HOUSING AND THE ENVIRONMENT

TABLE 6c

HOUSEHOLDS WITH NO ACCESS TO A VEHICLE, BY AREA, 2011

Area	Households	No cars or vans in household	Percentage of households (%)
Bebington	6,645	1,439	21.7
Bidston & St James	6,889	3,488	50.6
Birkenhead & Tranmere	7,747	4,309	55.6
Bromborough	6,690	1,927	28.8
Clatterbridge	5,924	662	11.2
Cloughton	6,285	1,719	27.4
Eastham	5,955	1,199	20.1
Greasby, Frankby & Irby	5,978	721	12.1
Heswall	5,808	579	10.0
Hoylake & Meols	5,713	1,034	18.1
Leasowe & Moreton East	6,390	2,021	31.6
Liscard	6,891	2,420	35.1
Moreton West & Saughall Massie	6,176	1,243	20.1
New Brighton	6,784	2,115	31.2
Oxton	6,592	1,458	22.1
Pensby & Thingwall	5,803	962	16.6
Prenton	6,051	1,510	25.0
Rock Ferry	6,465	3,010	46.6
Seacombe	6,871	3,156	45.9
Upton	7,127	2,283	32.0
Wallasey	6,313	1,226	19.4
West Kirby & Thurstaston	5,486	910	16.6
Birkenhead Constituency	40,029	15,494	38.7
Wallasey Constituency	39,425	12,181	30.9
Wirral South Constituency	31,022	5,806	18.7
Wirral West Constituency	30,107	5,910	19.6
Wirral	140,583	39,391	28.0

Notes and Definitions

1. This table shows the proportion of households who indicated in the 2011 Census, that their household had no access to a car or a van. This includes company cars and vans available for private use
2. Please note that a new Census was conducted in 2021. Data from this Census will be made available in line with the release timetables from ONS. For further details see: [Census 2021 milestones - Office for National Statistics \(ons.gov.uk\)](#)

Source: Census 2011, via [NOMIS](#)

SECTION 6: TRANSPORT, HOUSING AND THE ENVIRONMENT

TABLE 6d

PROPORTION OF PEOPLE AGED OVER 65 YEARS LIVING ALONE, BY AREA, 2011

Area	All Persons Aged 65+		
	Population	Numbers living alone	Percentage living alone (%)
Bebington	3,171	1,085	34.2
Bidston & St James	2,048	834	40.7
Birkenhead & Tranmere	1,702	851	50.0
Bromborough	2,555	881	34.5
Clatterbridge	3,566	815	22.9
Cloughton	2,826	813	28.8
Eastham	3,022	950	31.4
Greasby, Frankby & Irby	3,307	962	29.1
Heswall	3,848	1,049	27.3
Hoylake & Meols	2,991	985	32.9
Leasowe & Moreton East	2,418	910	37.6
Liscard	2,621	934	35.6
Moreton West & Saughall Massie	2,641	912	34.5
New Brighton	2,603	1,032	39.6
Oxton	2,742	932	34.0
Pensby & Thingwall	3,374	1,107	32.8
Prenton	2,691	830	30.8
Rock Ferry	2,019	795	39.4
Seacombe	1,935	783	40.5
Upton	3,174	1,160	36.5
Wallasey	3,042	1,001	32.9
West Kirby & Thurstaston	3,131	1,000	31.9
Birkenhead Constituency	14,028	5,055	36.0
Wallasey Constituency	15,260	5,572	36.5
South Wirral Constituency	16,162	4,780	29.6
West Wirral Constituency	15,977	5,214	32.6
Wirral	61,427	20,621	33.6
North West	1,252,600	386,650	30.9
England	9,305,200	2,725,596	29.3

Notes and Definitions

1. Living alone is defined as households which consist of one person living alone, or a group of people (not related) living at the same address sharing cooking facilities and a living room, sitting room or dining area
2. A household must contain at least one person whose place of usual residence is at the address. A group of short-term residents living together is not classified as a household, neither is a group of people at an address where only visitors are staying
3. Please note that a new Census was conducted in 2021. Data from this Census will be made available in line with the release timetables from ONS. For further details see: [Census 2021 milestones - Office for National Statistics \(ons.gov.uk\)](#)

Source: Census 2011, via [NOMIS](#)

SECTION 6: TRANSPORT, HOUSING AND THE ENVIRONMENT

TABLE 6e

INDEX OF MULTIPLE DEPRIVATION, BY AREA, 2019

Ward	Ward Ranking (Wirral)	Constituency	IMD 2019 Score (National)	Employment Score (%)	Income Score (%)
Birkenhead & Tranmere	1	Birkenhead	61.81	0.30	0.37
Bidston & St James	2	Birkenhead	61.80	0.31	0.39
Seacombe	3	Wallasey	58.70	0.27	0.34
Rock Ferry	4	Birkenhead	54.20	0.27	0.33
Leasowe & Moreton East	5	Wallasey	40.95	0.21	0.24
Liscard	6	Wallasey	39.06	0.18	0.21
Claughton	7	Birkenhead	37.81	0.19	0.21
Upton	8	Wirral West	33.75	0.17	0.21
New Brighton	9	Wallasey	32.02	0.16	0.18
Bromborough	10	Wirral South	31.36	0.15	0.17
Prenton	11	Birkenhead	27.28	0.15	0.16
Moreton West & Saughall Massie	12	Wallasey	24.93	0.12	0.15
Oxton	13	Birkenhead	20.98	0.11	0.12
Eastham	14	Wirral South	17.31	0.09	0.10
Bebington	15	Wirral South	17.07	0.10	0.10
Wallasey	16	Wallasey	15.53	0.09	0.09
Pensby & Thingwall	17	Wirral West	15.27	0.10	0.10
West Kirby & Thurstaston	18	Wirral West	12.64	0.08	0.08
Hoylake & Meols	19	Wirral West	12.40	0.08	0.08
Clatterbridge	20	Wirral South	11.39	0.07	0.06
Greasby, Frankby & Irby	21	Wirral West	9.49	0.07	0.06
Heswall	22	Wirral South	6.29	0.05	0.04
Wirral			29.43	0.15	0.17

Notes and Definitions

1. The Index of Multiple Deprivation (2019) is the most recent measure of deprivation in England
2. Wirral overall was ranked 77th of all local authorities in England on the 2019 IMD (1 is most deprived, 317 is least deprived)
3. Ward Ranking (Wirral) shows Wirral wards ranked against each other (1 is most deprived, 22 is least deprived)
4. Income deprivation is a measure of the proportion of families on very low incomes, whether they are in or out of work. The scores in the Income and Employment Domains range from 0 to 1 and correspond to percentage rates. So, for example, a score of 0.37 in Birkenhead & Tranmere indicates that 37% of residents in that ward are income deprived

Source: [Ministry of Housing, Communities and Local Government](#)

SECTION 6: TRANSPORT, HOUSING AND THE ENVIRONMENT

TABLE 6f

ESTIMATED NUMBER OF HOUSEHOLDS IN FUEL POVERTY BY AREA, 2019

Area	Estimated number of households in fuel poverty	Estimated number of households	Percentage of households in fuel poverty (%)
Bebington	891	6,785	13.1%
Bidston & St James	1,520	6,746	22.5%
Birkenhead & Tranmere	1,772	8,398	21.1%
Bromborough	1,100	7,049	15.6%
Clatterbridge	590	6,663	8.9%
Claughton	1,036	6,864	15.1%
Eastham	713	6,285	11.3%
Greasby, Frankby & Irby	545	6,548	8.3%
Heswall	449	6,217	7.2%
Hoyle & Meols	620	5,710	10.9%
Leasowe & Moreton East	1,061	6,995	15.2%
Liscard	1,163	6,884	16.9%
Moreton West & Saughall Massie	689	6,274	11.0%
New Brighton	1,055	7,399	14.3%
Oxton	787	7,096	11.1%
Pensby & Thingwall	587	5,787	10.1%
Prenton	795	6,103	13.0%
Rock Ferry	1,400	6,765	20.7%
Seacombe	1,474	7,251	20.3%
Upton	1,027	7,667	13.4%
Wallasey	799	6,793	11.8%
West Kirby & Thurstaston	485	6,014	8.1%
Birkenhead Constituency	7,310	41,972	17.4%
Wallasey Constituency	6,241	41,596	15.0%
Wirral South Constituency	3,743	32,999	11.3%
Wirral West Constituency	3,264	31,726	10.3%
Wirral	20,558	148,293	13.9%
North West	461,364	3,177,487	14.5%
England	3,175,979	23,661,751	13.4%

Notes and Definitions

1. Ward-level data has been aggregated using a new LSOA-level lookup, to improve accuracy, but may still not fully match ward boundaries
2. Household and fuel poverty numbers at region level come from the national fuel poverty statistics, 2019
3. More detailed information on the methodology used to model fuel poverty rates is available on the DBEIS website at: <https://www.gov.uk/government/organisations/department-for-business-energy-and-industrial-strategy>

Source: Department for Business, Energy & Industrial Strategy ([DBEIS](#)) via Government Gateway

SECTION 6: TRANSPORT, HOUSING AND THE ENVIRONMENT

TABLE 6g

TREND IN MEDIAN HOUSING AFFORDABILITY RATIO, BY AREA, 2007 TO 2020

Year	Wirral			North West			England		
	House Price	Annual Wage	Affordability Ratio	House Price	Annual Wage	Affordability Ratio	House Price	Annual Wage	Affordability Ratio
2007	£138,825	£23,128	6.00	£130,000	£22,833	5.69	£175,000	£24,500	7.14
2008	£137,500	£23,612	5.82	£130,000	£23,864	5.45	£177,000	£25,558	6.93
2009	£130,000	£24,916	5.22	£125,000	£24,011	5.21	£167,500	£26,145	6.41
2010	£135,000	£26,073	5.18	£130,000	£24,291	5.35	£181,000	£26,276	6.89
2011	£134,000	£25,578	5.24	£125,000	£24,166	5.17	£180,000	£26,500	6.79
2012	£135,000	£25,730	5.25	£125,000	£24,646	5.07	£180,000	£26,826	6.71
2013	£135,000	£26,712	5.05	£125,000	£25,309	4.94	£184,000	£27,375	6.72
2014	£140,000	£27,545	5.08	£134,000	£25,324	5.29	£191,000	£27,500	6.95
2015	£142,000	£28,106	5.05	£138,000	£25,711	5.37	£204,000	£27,838	7.33
2016	£149,000	£28,183	5.29	£143,000	£26,220	5.45	£215,000	£28,500	7.54
2017	£152,000	£27,561	5.52	£150,000	£26,660	5.63	£225,000	£29,085	7.74
2018	£159,950	£27,708	5.77	£155,000	£27,520	5.63	£230,000	£29,849	7.71
2019	£162,500	£29,463	5.52	£159,000	£28,511	5.58	£233,000	£30,692	7.59
2020	£167,500	£28,977	5.78	£163,255	£29,700	5.50	£240,000	£31,766	7.56

Notes and Definitions

1. Housing affordability ratios are calculated by dividing median house prices for existing dwellings, by median gross annual residence-based earnings
2. A larger housing affordability ratio means that an area is less affordable for a resident to purchase a house in their local authority district, whereas a smaller ratio means that an area is more affordable

Source: Office for National Statistics ([ONS](#))

SECTION 6: TRANSPORT, HOUSING AND THE ENVIRONMENT

TABLE 6h

ROAD COLLISION CASUALTIES, BY AREA OF COLLISION, 2018-20 (3 YEARS POOLED)

Area of Collision	Total Number of Casualties	% Killed or Seriously Injured	% Killed or Seriously Injured (Child)
Bebington	40	22.5	2.5
Bidston & St James	153	19.6	2.6
Birkenhead & Tranmere	166	15.1	3.6
Bromborough	116	21.6	1.7
Claughton	78	10.3	0.0
Clatterbridge	49	16.3	4.1
Eastham	49	10.2	2.0
Greasby, Frankby & Irby	37	16.2	2.7
Heswall	40	25.0	0.0
Hoylake & Meols	48	12.5	0.0
Leasowe & Moreton East	70	12.9	4.3
Liscard	74	13.5	1.4
Moreton West & Saughall Massie	56	19.6	0.0
New Brighton	49	18.4	8.2
Oxton	59	10.2	0.0
Pensby & Thingwall	53	20.8	1.9
Prenton	68	23.5	4.4
Rock Ferry	97	18.6	3.1
Seacombe	83	19.3	2.4
Upton	77	13.0	0.0
Wallasey	59	33.9	11.9
West Kirby & Thurstaston	47	23.4	2.1
Birkenhead Constituency	592	17.4	3.0
Wallasey Constituency	391	19.2	4.3
Wirral South Constituency	323	17.6	1.2
Wirral West Constituency	262	16.8	1.1
Wirral	1,568	17.8	2.7

Notes and Definitions

1. The data in this table is based on the information collected by Merseyside Police at the scene of the collision using the STATS-19 form. This is used to record the details of the incident and the circumstances surrounding it
2. Data is based on the location of the collision, rather than the usual place of residence of the collision victim
3. Data presented is for 3 pooled years to smooth out the random year-on-year variations

Source: Wirral Accident Investigation Unit, Wirral Council

SECTION 6: TRANSPORT, HOUSING AND THE ENVIRONMENT

TABLE 6i

CARBON DIOXIDE (CO₂) EMISSION ESTIMATES, BY INDUSTRY, BY AREA, 2005 TO 2018

Year	Wirral			North West	England	
	Type of Industry			Per Capita Emissions (t)		
	Industry and Commercial Total (kt)	Domestic Total (kt)	Transport Total (kt)			
2005	654.2	822.4	489.4	6.2	8.7	8.5
2006	650.1	812.7	473.8	6.1	8.5	8.4
2007	646.1	779.4	480.4	6.0	8.3	8.1
2008	605.5	777.5	458.3	5.8	8.1	7.9
2009	507.6	702.0	437.6	5.2	7.3	7.0
2010	541.0	741.9	432.3	5.4	7.6	7.2
2011	441.9	640.6	431.1	4.7	6.8	6.6
2012	501.8	691.4	418.5	5.0	7.2	6.8
2013	493.0	668.7	412.2	4.9	6.9	6.6
2014	413.1	556.4	418.7	4.3	6.2	6.0
2015	390.2	533.7	425.1	4.2	5.9	5.7
2016	374.2	510.1	429.0	4.1	5.6	5.3
2017	340.0	481.4	416.2	3.8	5.4	5.1
2018	333.4	478.9	406.9	3.8	5.3	4.3

Notes and Definitions

1. The data publication used combines data from the UK's Greenhouse Gas Inventory with data from a number of other sources, including local energy consumption statistics, to produce a nationally consistent set of carbon dioxide emissions estimates at local authority level from 2005 to 2018. They show "territorial" emissions, meaning emissions that occur within the UK's borders
2. The data show emissions allocated on an "end-user" basis where emissions are distributed according to the point of energy consumption (or point of emission if not energy related). Except for the energy industry, emissions from the production of goods are assigned to where the production takes place. Therefore, emissions from the production of goods which are exported will be included, and emissions from the production of goods which are imported are excluded
3. Carbon dioxide (CO₂) is the main greenhouse gas, accounting for about 81 per cent of the UK greenhouse gas emissions in 2017. In recent years, increasing emphasis has been placed on the role of regional bodies and local government in contributing to energy efficiency improvements, and hence reductions in carbon dioxide emissions
4. The unit of measurements used in this table are kiloton (kt) and ton (t)
5. Figures above now include CO₂ emissions from large industrial sites, railways, motorways and land-use. Therefore, figures have been retrospectively updated and are no longer comparable with previous editions of the Statistical Compendium

Source: Department for Business, Energy, and Industrial Strategy ([DBEIS](#))

SECTION 7: CRIME AND SAFETY

TABLE 7a

TOTAL RECORDED CRIME TYPES IN WIRRAL, BY CONSTITUENCY, JANUARY 2020 – DECEMBER 2020

Crime Type	Constituency				Wirral
	Birkenhead	Wallasey	Wirral South	Wirral West	
Anti-social behaviour	3,439	2,444	1,409	1,600	8,892
Bicycle theft	89	64	28	28	209
Burglary	403	271	215	139	1,028
Criminal damage and arson	1,250	800	462	386	2,898
Drugs	833	417	110	183	1,543
Other crime	260	182	65	71	578
Other theft	572	286	224	177	1,259
Possession of weapons	112	58	24	21	215
Public order	1,283	724	348	330	2,685
Robbery	77	63	21	18	179
Shoplifting	633	241	186	126	1,186
Theft from the person	93	40	15	9	157
Vehicle crime	405	286	187	183	1,061
Violence and sexual offences	4,555	2,997	1,415	1,289	10,256
Total of all crimes	14,004	8,873	4,709	4,560	32,146

Notes and Definitions

1. A full list of the definitions of each of the crime types can be found [here](#). Some key definitions to note however are:
 - **Robbery:** Includes offences where a person uses force or threat of force to steal
 - **Theft from the person:** Includes crime that involve theft directly from the victim but without the use of threat or force
 - **Bicycle theft:** Includes the taking without consent or theft of a pedal cycle
 - **Shoplifting:** Includes thefts from shops or stalls
 - **Other theft:** Includes theft by an employee, blackmail and making off without payment
 - **Other crime:** Includes forgery, perjury and other miscellaneous crimes

Source: [Police UK](#)

SECTION 7: CRIME AND SAFETY

TABLE 7b

TREND IN DOMESTIC ABUSE RATES, BY AREA, 2010/11 – 2020/21

Year	Wirral		Merseyside	North West	England
	Crimes and Incidences	Rate per 1,000			
2010/11	9,214	*	27.6	22.2	18.4
2011/12	9,416	*	28.8	21.1	18.0
2012/13	9,591	36.8	29.3	21.4	18.1
2013/14	9,589	36.8	28.4	21.4	19.4
2014/15	9,806	37.5	27.6	20.5	20.4
2015/16	10,308	39.4	26.2	23.5	23.7
2016/17	9,965	38.1	24.6	24.1	24.0
2017/18	10,189	38.9	23.6	25.1	25.1
2018/19	11,942	45.5	25.8	28.6	27.4
2019/20	12,795	48.7	28.8	25.7	28.0
2020/21	12,384	47.0	*	*	*

Notes and Definitions

- Domestic abuse is defined as any incident or pattern of incidents of controlling, coercive or threatening behaviour, violence or abuse between those aged 16 or over who are, or have been, intimate partners or family members. It can include psychological, physical, sexual, financial and/or emotional abuse (Home Office, 2013)
- Figures from 2015/16 include the new methodology which captures data relating to the new categories of all domestic abuse related crimes and domestic abuse related incidents. Figures from 2015/16 onwards are therefore not comparable with data released in previous years.
- An incident is an occurrence reported to the police where circumstances are considered as domestic by the call the call handler. An incident may or may not result in a crime record being created
- A crime is controlling, coercive or threatening behaviour, violence or abuse between those aged 16 or over who are or have been intimate partners or family members regardless of gender or sexuality
- Offences have been recorded as a crime, whereas the number of incidents refers to those that were not recorded as a crime, so the two categories are mutually exclusive of each other
- Rates have been calculated using the preceding calendar years mid-year population estimated sourced from the Office for National Statistics (ONS)
- * notes that data is not available at the time of publishing

Source: Public Health Outcomes Framework, [Public Health England \(PHE\)](#) and Merseyside Police Information Management Systems

SECTION 8: APPENDICES

Table 8a

LIST OF INTERNATIONAL CLASSIFICATION OF DISEASE (ICD) CODES FOR CAUSES OF DEATH INCLUDED IN COMPENDIUM, 2015

Cause	ICD-10 Code
All Cancers	C00-C97
- Colorectal Cancer	C18-C21
- Lung Cancer	C33-C34
- Female Breast cancer	C50
- Cervical Cancer	C53
- Prostate Cancer	C61
All Circulatory Disease	I00-I99
- Cardiovascular Disease	I20-I26, I42.6, I71, I80.1-I80.3, I80.9, I82.9
- Coronary (Ischaemic) Heart Disease	I20-I25
- Cerebrovascular Disease (Stroke)	I60-I69
Diseases of Respiratory System	J00-J99
- Pneumonia	J12-J18
- Bronchitis, Emphysema and COPD	J40-J44
- Asthma	J45-J46
Diseases of Digestive System	K00-K93
- Chronic Liver Disease incl. Cirrhosis	K70, K73-K74
External Causes of Injury	V01-Y89
- Accidents	V01-X59
- Suicide and Undetermined Injury	X60-X84, Y10-Y34

The International Classification of Diseases (ICD) is the standard diagnostic tool used by health professionals to classify diseases and other health problems. ICD-10 came into use in World Health Organisation (WHO) member States from 1994. Please note ICD-11 was presented at the World Health Assembly in May 2019 for adoption by Member States and will come into effect on 1st January 2022.

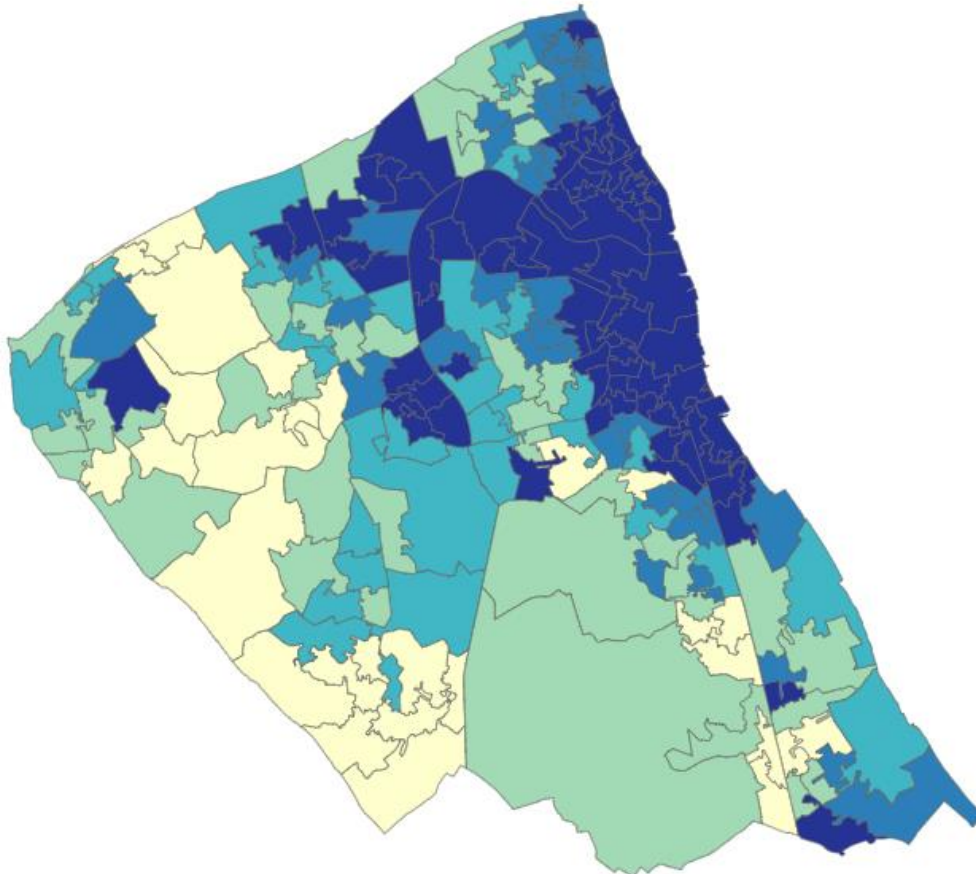
SECTION 8: APPENDICES

Map 8a

INDEX OF MULTIPLE DEPRIVATION (IMD) 2019 SCORES FOR WIRRAL BY LSOA

IMD 2019 by Deprivation Quintile and LSOA

Deprivation Quintile ● 1 (Most Deprived) ● 2 ● 3 ● 4 ● 5 (Least Deprived)

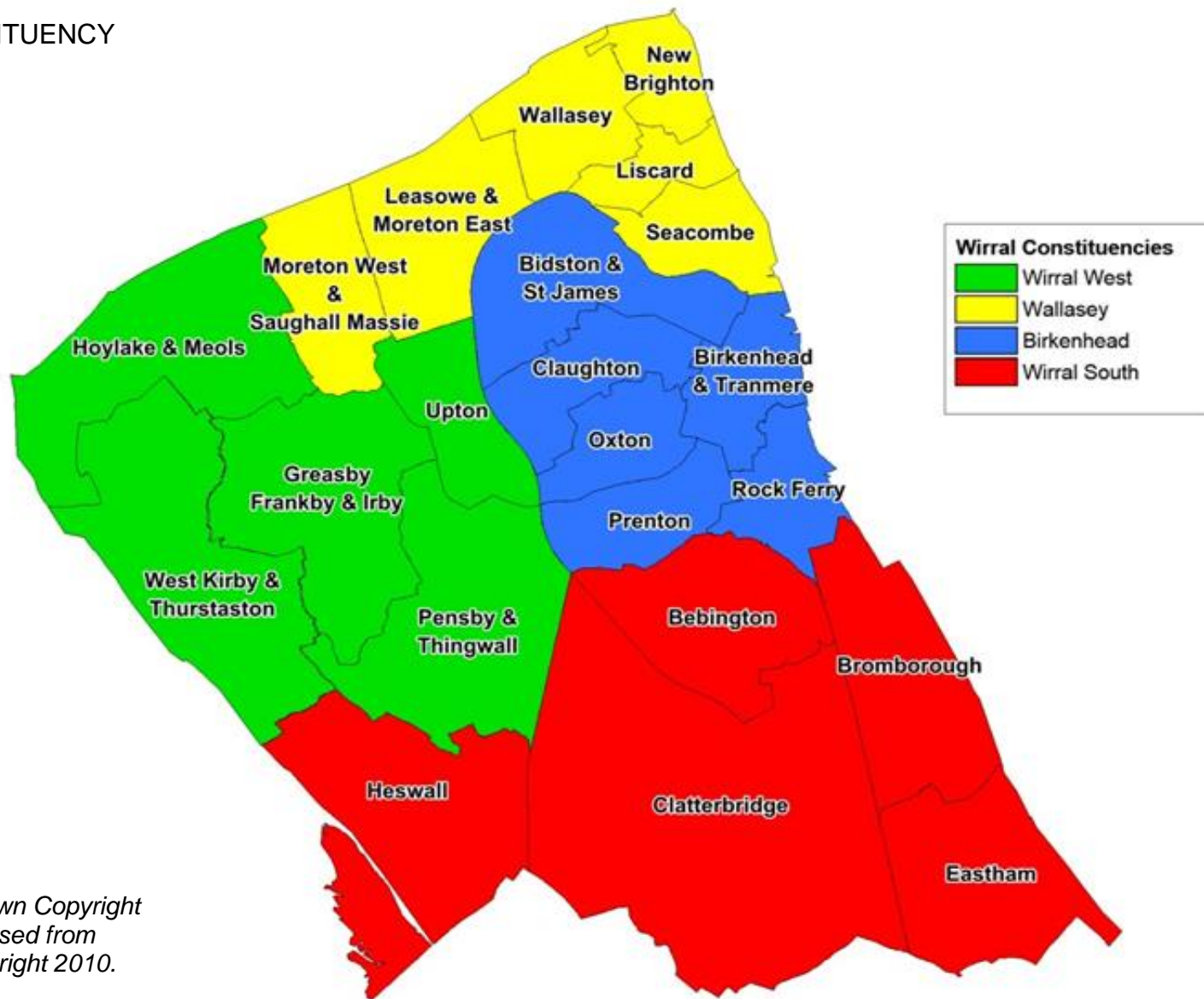
**Notes and Definitions**

1. This map shows the Index of Multiple Deprivation (IMD 2019) score for Lower Layer Super Output Areas (LSOA) across Wirral. The more disadvantaged the area, the higher the score. The darker shading indicates higher deprivation levels, i.e. most disadvantaged area. Lighter shading indicates fewer disadvantaged areas
2. The IMD 2019 aims to measure as accurately as possible the distribution of deprivation across an area. It uses 7 measures of deprivation (Income, Employment, Health Deprivation and Disability, Education, Skills and Training, Barriers to Housing and Services, Crime and Living Environment)

Source: Department of Communities and Local Government ([DCLG](#))

SECTION 8: APPENDICES

WIRRAL WARDS BY CONSTITUENCY



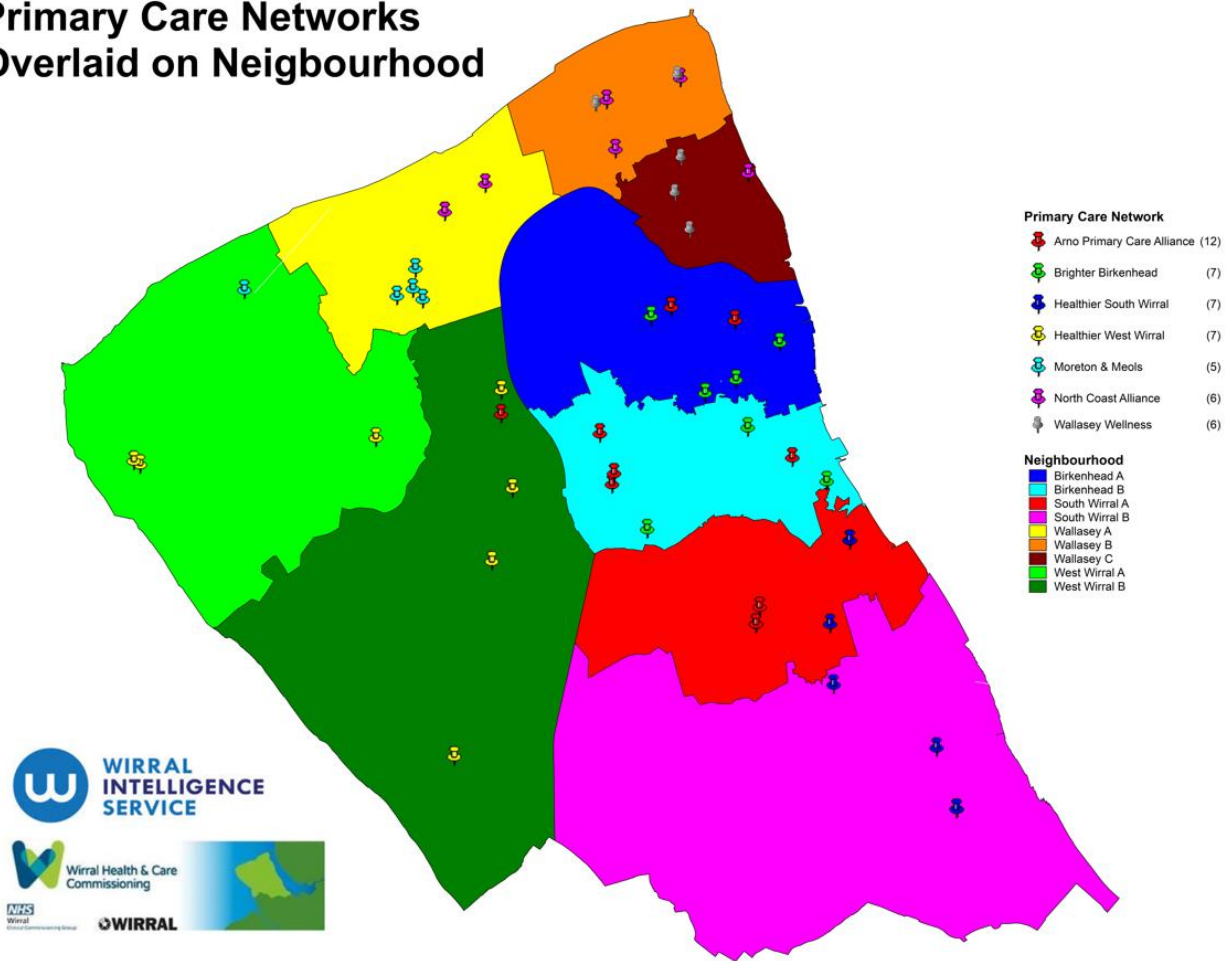
Source: Ordnance Survey © Crown Copyright
Map includes mapping data licensed from
Ordnance Survey © Crown Copyright 2010.
License Number 100019918

SECTION 8: APPENDICES

Map 8c

WIRRAL GP PRACTICES BY PRIMARY CARE NETWORK AND NEIGHBOURHOOD

**Primary Care Networks
Overlaid on Neighbourhood**



Source: Ordnance Survey © Crown Copyright
 Map includes mapping data licensed from
 Ordnance Survey © Crown Copyright 2010
 License Number 10019918

Compiled by
Wirral Intelligence Service
Wirral Council



Many thanks for images provided by:
Paul Curtis (a collage of his New Ferry murals)
Jack Font (Guide Dogs Memorial - commemorating
the 90th anniversary of the founding of the
association in 1931)