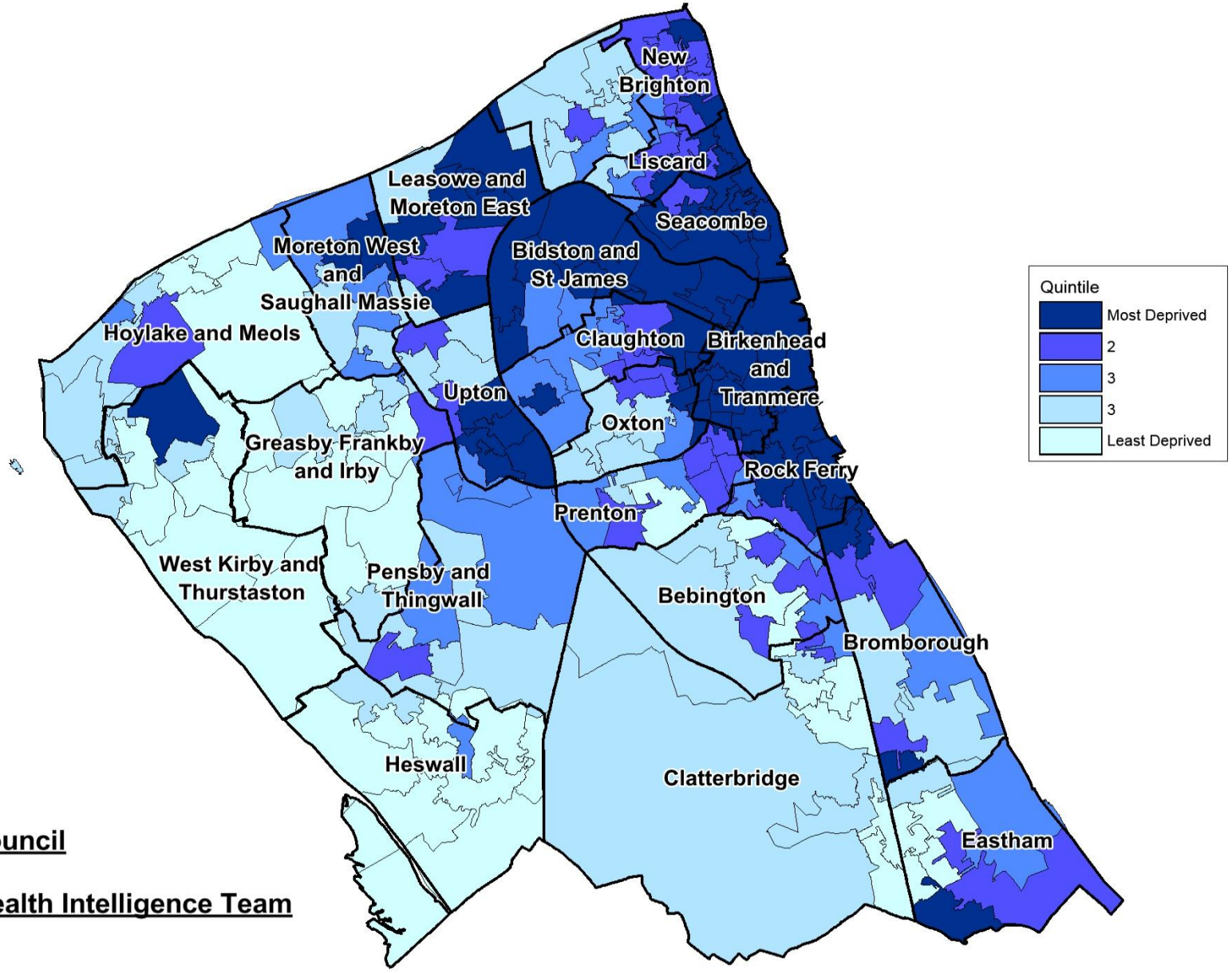


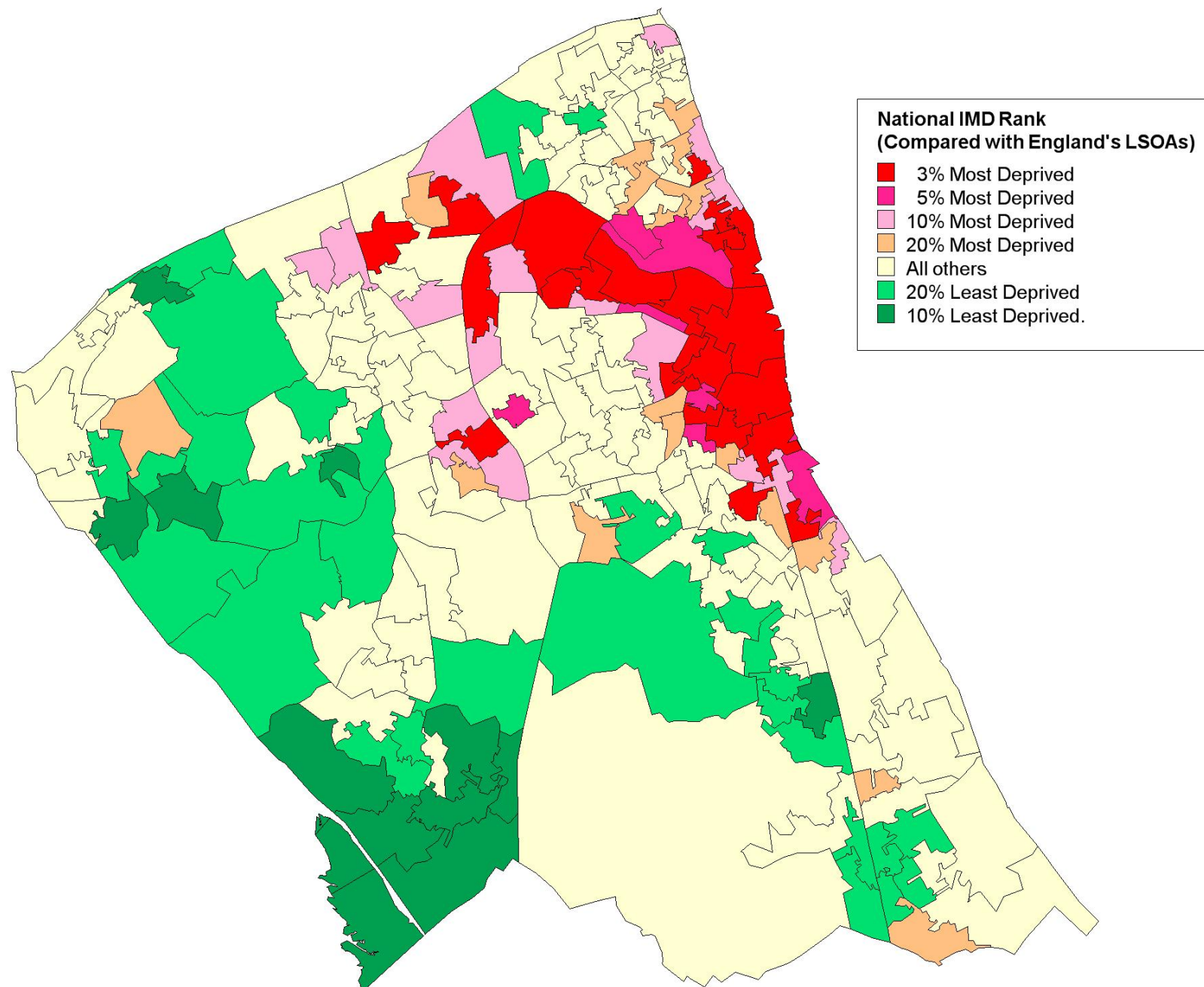
Index of Multiple Deprivation (IMD), 2015, by Wirral LSOA



Wirral Council

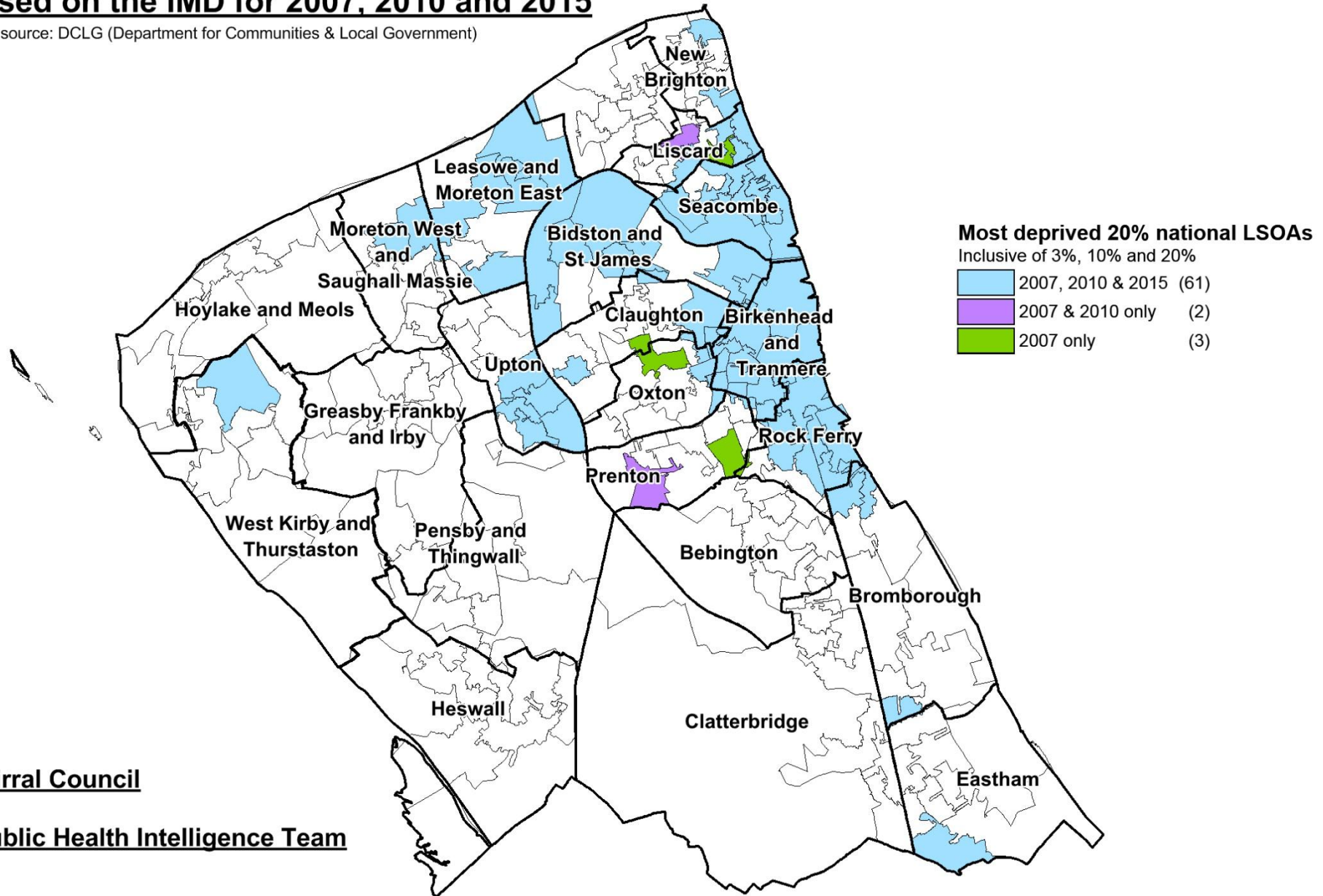
Public Health Intelligence Team

Index of Multiple Deprivation (IMD) 2010 Score by Wirral LSOA



Wirral LSOAs which fall into the 20% most deprived groups nationally, based on the IMD for 2007, 2010 and 2015

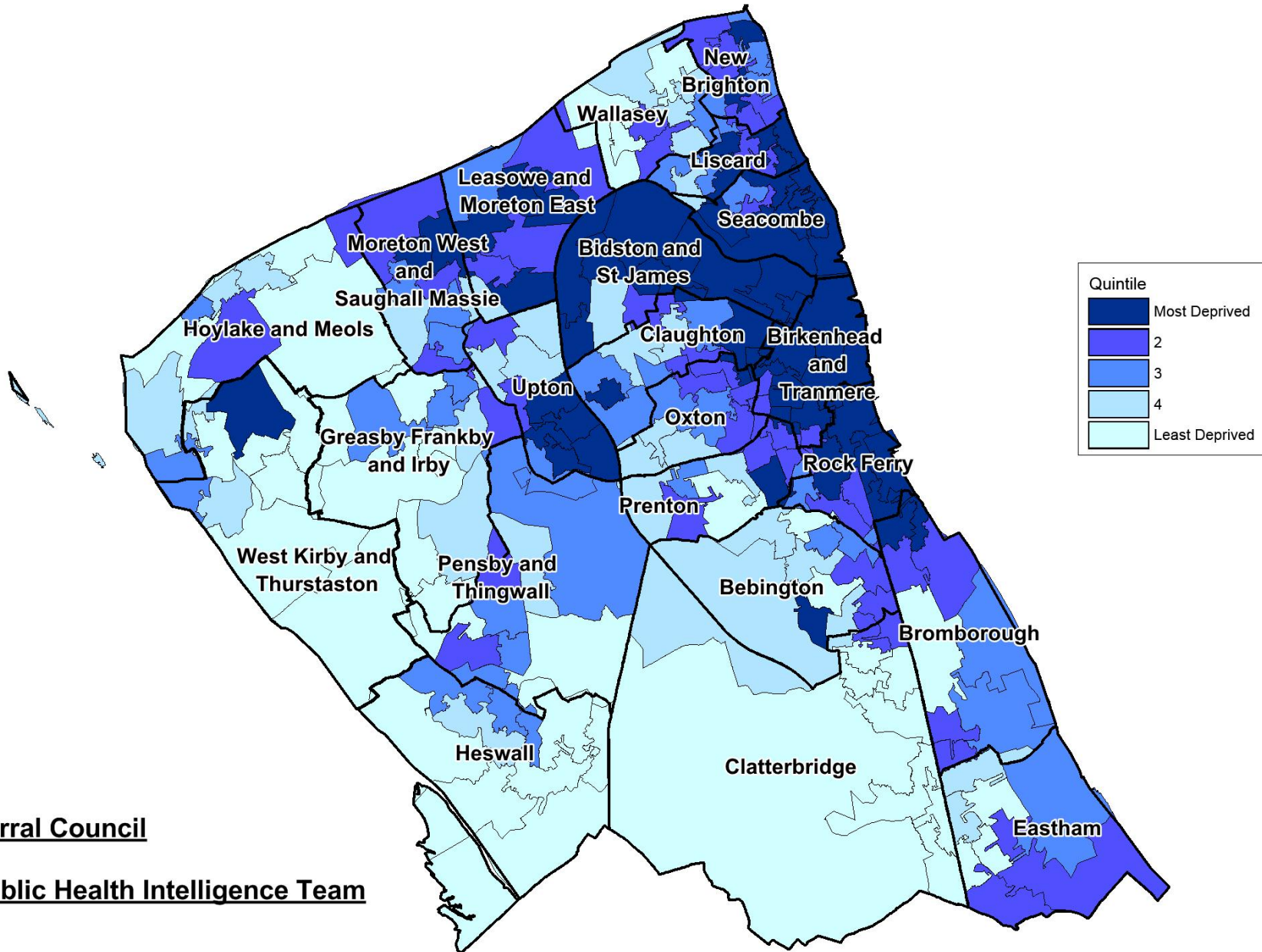
Data source: DCLG (Department for Communities & Local Government)



Wirral Council

Public Health Intelligence Team

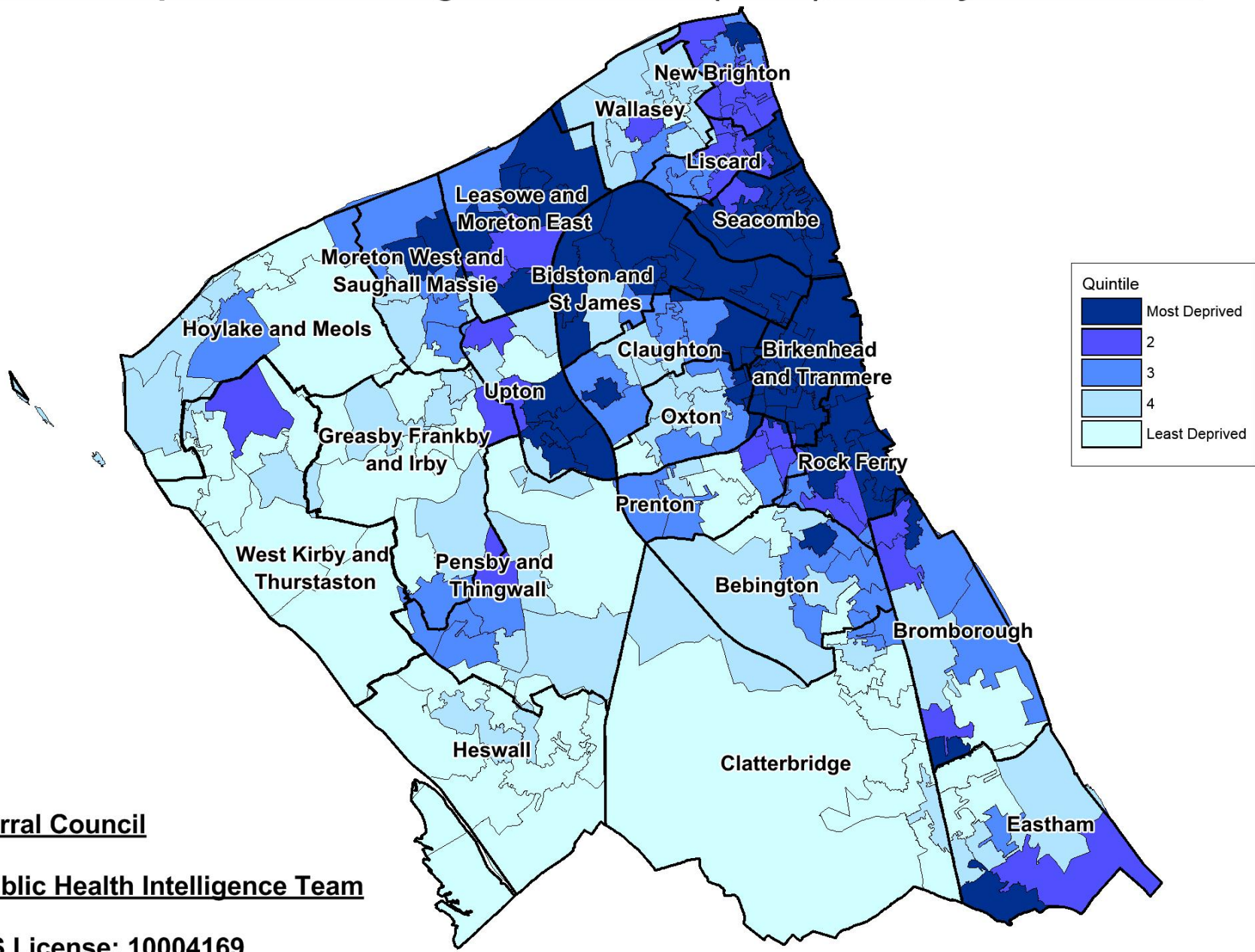
Income Deprivation Affecting Older People Index (IDAOPi), 2015, by Wirral LSOA



Wirral Council

Public Health Intelligence Team

Income Deprivation Affecting Children Index (IDACI), 2015, by Wirral LSOA

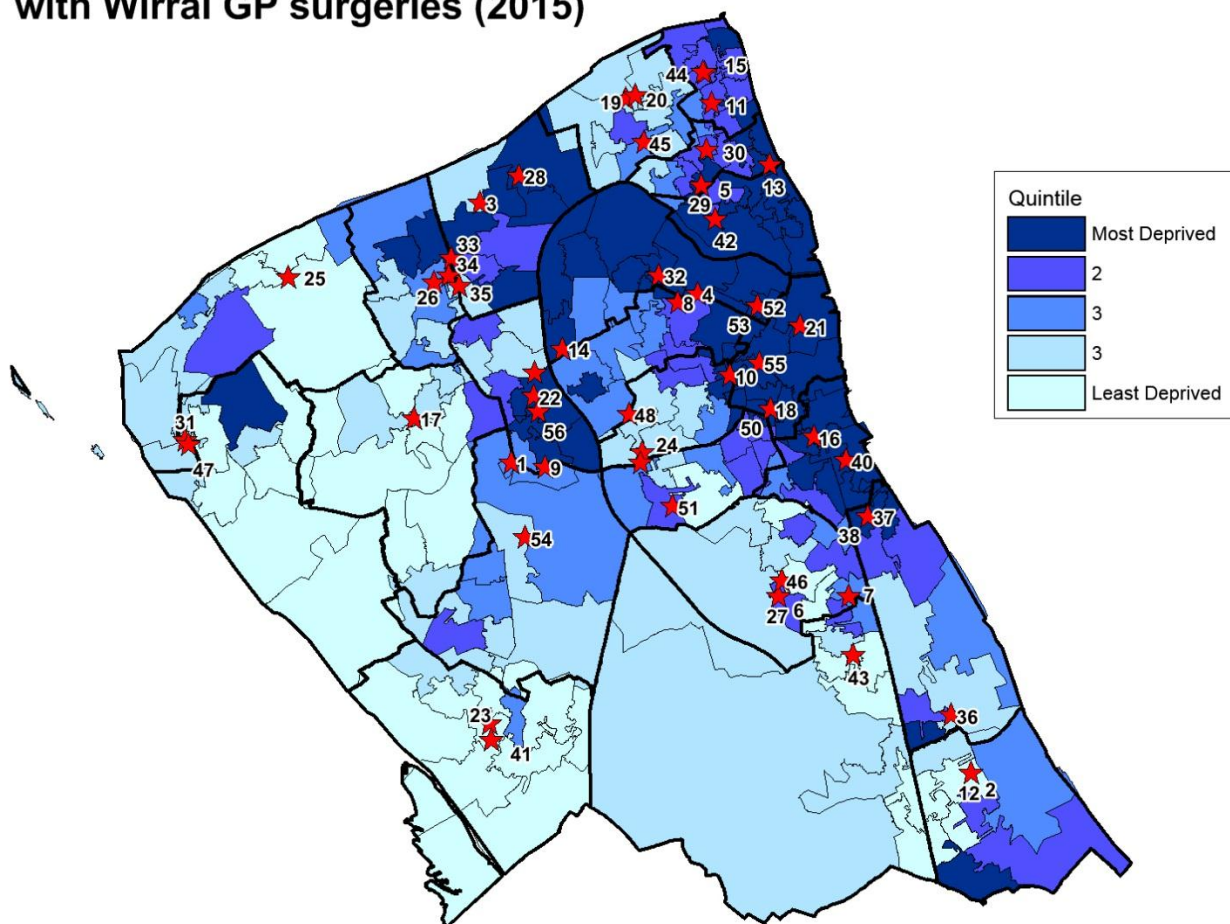


Wirral Council

Public Health Intelligence Team

OS License: 10004169

Index of Multiple Deprivation (IMD), 2015, by Wirral LSOA with Wirral GP surgeries (2015)



GP Practice		GP Practice	
All Day Health Centre	1	Liscard Group Practice	29
Allport Surgery	2	Manor Health Centre	30
Blackheath Medical Centre	3	Marine Lake Medical Centre	31
Cavendish Medical Centre	4	Miriam Medical Centre	32
Central Park Group Practice	5	Moreton Cross Group Practice	33
Church Road Medical Practice	6	Moreton Health Clinic	34
Civic Health Centre	7	Moreton Medical Centre	35
Claughton Medical Centre	8	Orchard Surgery	36
Commonfield Surgery	9	Parkfield Mc (Hawthornthwaite)	37
Devaney Medical Centre	10	Parkfield Medical Centre (Raymond)	38
Earlston and Seabank Road Clinic	11	Prenton Medical Centre	39
Eastham Group Practice	12	Riverside Surgery	40
Egremont Medical Centre	13	Silverdale Medical Centre	41
Fender Way Health Centre	14	Somerville Medical Centre	42
Field Road Health Centre	15	Spital Surgery	43
Gladstone Medical Centre	16	St. Georges Medical Centre	44
Greasby Group Practice	17	St. Hilary Brow Group Practice	45
Greenway Surgery	18	Teehey Lane Medical Centre	46
Grove Medical Centre (the Village MC)	19	TG Medical Centre	47
Grove Road Surgery	20	Townfield Health Centre	48
Hamilton Medical Centre	21	Upton Group Practice	49
Heatherlands Medical Centre	22	Victoria Park Health Centre	50
Heswall & Pensby Health Centre	23	Villa Medical Centre	51
Holmlands Medical Centre	24	Vittoria Medical Centre (Edwards)	52
Hoylake & Meols Medical Centre	25	Vittoria Medical Centre (Murty)	53
Hoylake Road Medical Centre	26	West Wirral Group Practice	54
Kings Lane Medical Centre	27	Whetstone Lane Medical Centre	55
Leasowe Primary Care	28	Woodchurch Medical Centre	56